

# Tax Official Gives Advice On How to Handle Estate

Protect yourself and your wife in planning your estate, then what you do not need give away to your children and other worthy beneficiaries, nearly 100 Birmingham Rotarians were advised at their Monday noon luncheon.

Making the suggestion was Brennan B. Gillespie, chief of the estate tax division of the Detroit office of the Internal Revenue Service.

"For one person to keep his estate to himself may not be in the best interests of the American economy," he said.

"By dividing up the amount you do not need for the future of you and your wife, you make the balance of your estate available for investment by a number of other persons."

"THEREFORE, he said, one dollar in federal estate tax now might mean more to both government and heirs by multiplying through sound investment in American equity.

He was introduced by club member William Grabenick, chairman of the Oakland County Board of

Supervisor's equalization committee.

"One of the most desirable tax savings is through gifts — while both you and the beneficiary are young enough to enjoy it," Gillespie suggested.

HE SAID a far-sighted man will draw his will and plan his estate to take advantage of available tax benefits.

"Despite contrary opinion, we want you to avoid unnecessary taxes," Gillespie emphasized.

"However, avoiding taxes is one

thing. Evading them is quite another. Avoidance is legal. Evasion is illegal."

He said in his 22 years with the revenue department, he has never found a finer, more dedicated, honest group of people in his life.

"We do make errors in judgment—but we get nothing out of it personally," he admitted. "We try to get high caliber men working for us."

CLUB MEMBER and past president Edwin F. Kirbert reminded members that 1961 marks the 60th anniversary of the Rotarian magazine.

He said this important "voice" of Rotary International goes to more than 500,000 members in 10,778 clubs in 120 countries.

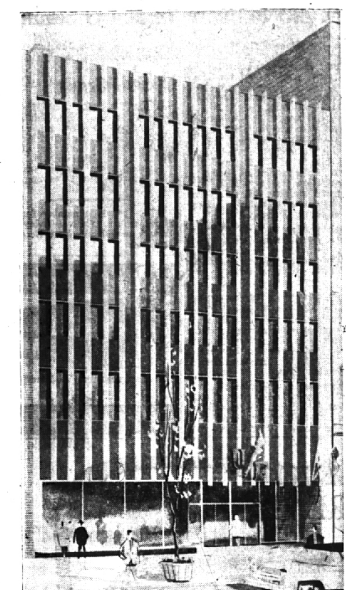
He emphasized that the magazine plays an important role in international affairs. Among contri-

### PFC Hawkins Assists In Inaugural Parade

Army Private First Class Roger Hawkins, son of Mr. and Mrs. Lester Hawkins, 1276 Smith Street, Birmingham, was selected to participate with his unit, the 1st Army Cavalry Regiment, in the Jan. 20 inaugural parade.

PFC Hawkins, a tank driver in "L" Troop, 3d Reconnaissance Squadron, and 144 other soldiers of the power-packed Armored Cavalry Regiment, a member unit of the Always ready Strategic Army Corps (STRAC), the Army's global "first brigade," manned the regiment's parade of armored vehicles.

PFC Hawkins entered the Army in January, 1960 and completed basic training at Fort Riley,



## UF Dedicates New Home

The United Foundation, whose 12 annual Torch Drives have raised \$173,000,000 for health and community services, dedicated its new and first permanent home recently.

A series of Open Houses will be held from now to Feb. 2. The completely renovated six-story building at 1528 Woodward, Detroit, costing \$305,000 plus \$455,000 for remodeling, was the gift of the Kresge Foundation. The suburban office of the United Foundation in Birmingham will be kept in operation to facilitate the 6,500 volunteers who comprise the Oakland County Community Campaigns unit of the Torch Drive.

## GM Spends \$250,000 In Pontiac Area in '60

Nearly one-quarter billion dollars was spent in the greater Pontiac area by General Motors for wages, supplies and other local expenditures during 1960, top officials of the city's three GM facilities announced Tuesday.

The statement was released jointly by S. E. Knudsen, Bingham Farms general manager of the Pontiac Motor Division; C. J. Werner, 2835 Endicott, Birmingham general manager of the GMC Truck & Coach Division; and T. P. Wisniewski, 2540 Broadway, Bloomfield Village, manager of the Fisher Body plant.

Employee earnings last year increased \$20 million over 1959, rising to \$178,800,000, GM executives reported. During the same period, average monthly employment rose from 22,750 to 25,312.

PAYMENTS for goods and services to Pontiac-area suppliers totaled \$165,700,000 for 1960, further increasing GM's economic contribution to the city.

With the start of the 1961 model year, modernization of the Fisher

plant neared completion, making it possible to produce bodies for the Pontiac Tempest as well as the standard-size Pontiac car.

Two separate body producing systems, four-and-a-half miles of the largest and most diversified operations in the division.

Employees at the three plants contributed a record \$288,103 to the Pontiac United Fund drive. General Motors made a corporate gift of \$109,242.

Under the chairmanship of S. E. Knudsen, the fund drive exceeded its goal by over \$50,000.

GMC TRUCK & Coach General Manager C. J. Werner was chairman of the UP industrial division which surpassed its quota by \$32,000.

During the year, employees invested \$4.1 million in U.S. Savings Bonds, purchased through the payroll deduction plan. Nearly three-quarter million dollars was paid to employees for ideas submission during the GM suggestion plan.

## JA Companies To Sponsor Trade Fair

Residents will have an opportunity to see Birmingham's Junior Achievement companies in action Monday when the eight teen-age operating firms stage their 11th annual Trade Fair.

According to Jack Miller, director of the Birmingham JA Center, hundreds of products ranging from windshield solvents to unique bird feeders will be displayed for purchase from 5 to 9 p.m. in the Birmingham Theatre Building, 177 S. Woodward.

JA members will conduct the fair, displaying the various production techniques and administrative sales operations.

THE COMPANIES are sponsored by the Birmingham Kiwanis Club, the Hudson Company, Michigan Bell Telephone Company, General Motors Technical Center and Chrysler Engineering.

Company presidents representing the various teen-age firms at the fair will be Mary Marchington, JAMACO; Bob Hammerstein, TRI-B; ASSEMBLE; Dave Roberts, JAY-CO; Dick Nettie, OMNICO; Ron Westcott, TAJAC; Mike Gibson, BIRMICO; Gary Pizzi, DAWHC; and Jim Van Doren, TOTEM.

Mr. and Miss Achievement, outstanding achievers, teenage salesmen and adult advisers will also be on hand for the affair.

Last year an estimated 250 persons attended the event locally with some eleven thousand people visiting 16 Junior Achievement trade fairs throughout southeastern Michigan. In all, \$5,000 worth of JA merchandise was purchased by the general public.

## Heights Notes To Appeal Drain Ruling

Madison Heights councilmen have voted to appeal the recent Michigan State Supreme Court ruling on the Twelve Towns drain to the U.S. Supreme Court.

The state high court ruled against Madison Heights' suit which sought to reduce its assessment in the proposed drain project for 12 communities in south Oakland.

Heights councilmen offered to call off the new appeal — if the other communities will foot the bill for enclosing the Red Run drainage ditch through Madison Heights.

PRESENT PLANS call for enclosing the ditch between Campbell and Stephenson roads. Another two miles of it runs through the Heights.

There appeared to be very little likelihood that other south Oakland communities would take Madison Heights seriously in its bargaining proposal.

The long-awaited Twelve Towns drainage project is a proposed system of outlet drains for most of the southern portion of the county.

## Area Schools Visited

Miss Katherine Kirby, admissions counselor for Ripon College, visited schools in the Birmingham area Monday to discuss opportunities for education at the Wisconsin liberal arts college. She visited the Kingswood School, and Bloomfield Hills, and Seaholm High School at Detroit Feb. 1 with advertising agent Thomas B. Adams president of the Campbell-Ewald Company as the main speaker and JA's Elizabeth Smith, Shop-Ball at Cobo Hall in Detroit, Feb. 3. The Show which will be held in the River Front Ballroom, is open to the public.



## "SUPER-RIGHT" QUALITY BEEF

# CHUCK ROAST

BLADE CUTS

"SUPER-RIGHT" IS FULLY MATURED GRAIN-FED BEEF  
One High Quality—No Confusion  
One Price As Advertised

LB. **49c**

Arm Cuts . . . lb. 59c  
English Cuts . . . lb. 65c

"SUPER-RIGHT" BONELESS

## Stewing Beef

LEAN STRIPS OR GROUND LB. **69c**

"SUPER-RIGHT" ALL MEAT

## Skinless Franks

FULL LB. PKG. **45c**

Allgood Brand—A&P'S FINE QUALITY

## Bacon

1-LB. PKG. **47c**

"SUPER-RIGHT" Fancy Sliced Bacon . . . 1-LB. PKG. **57c**

"SUPER-RIGHT" COUNTRY STYLE Thick-Sliced Bacon 2 LB. PKG. **1.09**

"SUPER-RIGHT" Beef Chuck Steak lb. **55c**

"SUPER-RIGHT" QUALITY

## Ground Beef

PREPARED FRESH MANY TIMES EVERY DAY LB. **49c**

JUICE FILLED, EASY TO PEEL, 100-SIZE

## Temple Oranges

DOZ. **49c**

## TANGERINES

FLORIDA, 176-SIZE ZIPPER SKIN 2 DOZ. **49c**

Fresh Broccoli YOUNG, TENDER SHOOTS BUNCH **29c**

Pascal Celery FLORIDA, 24-SIZE . . . STALK **19c**

Green Peppers FOR TASTY SALADS . . . 3 FOR **29c**

Michigan Potatoes U. S. No. 1 GRADE 50 LB. BAG **1.49**  
ALL PURPOSE

Grapefruit RUBY RED SEEDLESS . . . 8 LB. BAG **59c**

FROZEN FOOD SAVINGS

A&P Brand Sliced

## Strawberries

5 10-OZ. PKGS. **99c**

3 16-OZ. PKGS. **89c**

YOUR CHOICE AT A&P

# 10c

Table Napkins HUDSON WHITE PKG. OF 80

Kidney Beans ANN PAGE 16-OZ. CAN

Pork 'n' Beans SULTANA 16-OZ. CAN

Tomato Soup ANN PAGE 10 1/2-OZ. CAN

Tomato Sauce HUNT'S 8-OZ. CAN

Pineapple Juice A&P BRAND 12-OZ. CAN

Cut Green Beans 151-OZ. CAN

Whole Potatoes A&P BRAND 16-OZ. CAN

Tomato Paste CONTADINA 6-OZ. CAN

Sliced Beans A&P BRAND 16-OZ. CAN

Iona Hominy 16-OZ. CAN

Potatoes KOBAY 2 1/2-OZ. CAN

Diced Carrots IONA 16-OZ. CAN

Navy Beans 16-OZ. PKG.

A&P BRAND—YELLOW, WHOLE KERNEL

# CORN

6 16-OZ. CANS **89c**

A&P BRAND, WHOLE, UNPEELED

Apricots ANN PAGE 4 29-OZ. CANS **99c**

Egg Noodles ANN PAGE 1-LB. PKG. **25c**

Coffee CHASE & SANBORN 4c OFF LABEL 1-LB. CAN **69c**

Sparkle Puddings . . . 5 1EG. PKGS. **29c**

Kraft Caramels . . . 14-OZ. PKG. **39c**

Kraft Fudgies . . . 10-OZ. PKG. **29c**

Marshmallows Jot Puffed 2 10-OZ. PKGS. **39c**

TREESWEET BRAND

## Orange Juice

5 6-OZ. CANS **99c**

WISCONSIN SLICED

## Swiss Cheese

1-LB. **59c**

Keyko Margarine 3c OFF LABEL . . . 4 1-LB. CTNS. **29c**

Presto Whip DESSERT TOPPING . . . 6-OZ. CAN **29c**

Fleischmann's Margarine . . . 1-LB. CTN. **42c**

YOUR CHOICE

# 12c

Deviled Ham PLUMPOSE 2 1/2-OZ. CAN

Cream Style Corn 100% BRAND 17-OZ. CAN

Iona Sweet Peas 17-OZ. CAN

Cut Wax Beans 100% BRAND 15 1/2-OZ. CAN

A&P Sauerkraut DELICIOUS ANTIWINE 16-OZ. CAN

STORE HOURS

All A&P Super Markets Open

Thursday and Friday

9 A.M. to 9 P.M.

SAVE UP TO 6c—JANE PARKER

# DONUTS

GOLDEN BROWN SUGARED OR CINNAMON 19c PKG. OF 12

JANE PARKER—PLAIN OR POPPY SEED 1-LB. **35c**

## Vienna Bread

2 1-LB. LOAVES **35c**

All prices in this ad effective thru Sat. Jan. 28th in all Eastern Michigan A&P Super Markets

AMERICA'S DEPENDABLE FOOD MERCHANT SINCE 1859

5c Off label Spry Shortening 3 1/2 Cks. <b>78c</b>	Coral Shade Lifebuoy Soap 4 4pkgs. <b>45c</b>	Coral Shade Lifebuoy Soap 2 Cakes Bath <b>33c</b>
Regular Size Lux Soap 4 Cakes <b>41c</b>	Both Size Lux Soap 2 Cakes <b>29c</b>	Giant Size Rinsol Blue—71c off label 34-OZ. PKG. <b>67c</b> King Size . . . <b>1.31</b>
For Clean, Clean Hands Lava Soap 4 Reg. Cakes <b>49c</b>	Mild, Gentle Ivory Flakes 2 1/2 1/2-OZ. PKGS. <b>65c</b>	Duz Does Everything Duz 3 1/2 2 1/2-OZ. PKGS. <b>77c</b>