

ski fashions
from the continent

Exclusive at . . .

ALPINE

Bergmann's
"Skaidi"
PARKA

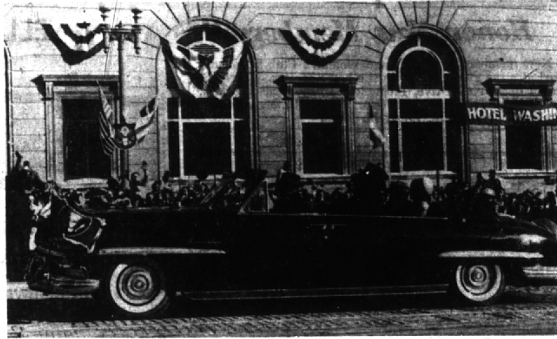
In a class by itself is this reversible parka in Sky Blue/Royal, Black/White or Olive/Purple. Water-proof cotton poplin on one side, rough textured wool fabric in Norway pattern on other. S-M-L.

34⁹⁵

International CREDIT CARDS ACCEPTED

SKI SHOP

1693 S. Woodward
2 BLOCKS N. of 14 MILE
MI 4-7474 Birmingham
"Your Complete Ski Shop"



Official State Bird Adopts New Look

Michigan's proud and cheery robin takes on a new look this year as he heralds the approach of the 1961 Michigan Week to be observed next May 21-27.

This year the state's official bird, that has been the symbol of seven state celebrations, is pictured with a new hand leader's cap as he leads the parade with a banner proclaiming the 1961 slogan, "Michigan Marching Forward." The slogan was adopted by the Michigan Week organization after Governor John B. Swainson suggested it.

The map of Michigan appears to the right of the robin. The emblem will be used on all advertising and promotional material in previous years the proud robin in various positions has pointed to the

greatness of Michigan. He was seen atop one of the huge towers of the Mackinac bridge when that great span was completed in 1938.

Then in 1959 he donned a sailor's cap and proudly hailed the state's position on the St. Lawrence seaway. Last year he emphasized Michigan's strategic position on the globe of the world.

B'ham Little Gallery Loans Enamel Art For N.Y. Exposition

The Peggy deSalle Little Gallery of Birmingham is among several sections of the United States and six countries including France, Austria, England, India, Japan and Russia, represented at the Imperial Exposition of the Enamel Arts at the Chrysler Salon in New York City.

The gallery's contribution to the Exposition is a professional cross in plaque-jeur enamel, created by Ronald Pearson of the Rochester Institute of Technology, New York. It is one of more than 70 modern and historical enamel art objects on display through Friday.

Want ads cannot be accepted after 5 p.m. each Tuesday.

Ticklers

By George



"I told him this was no time to ask for a raise!"

Engineers Society Honors 36 Men In Oakland Area

The Oakland chapter of the Michigan Society of Professional Engineers (MSPE) was host last week to 35 newly-registered professional engineers, all Oakland County residents, at its annual "Welcome Night."

Fred Von Voigtlander, past president of MSPE, and Jay Stockwell, chapter president, addressed the group at the dinner meeting

held at the Rotunda Inn on Pine Lake.

Birmingham sponsors of the congratulatory dinner included Ford Tractor and Implement Division; Hubbell, Roth & Clark, Inc.; Cudde Engine, Inc.; S. A. Walker Jr., engineer; Ralph Main, engineer; and Arthur W. Gillespie & Associates.

Olsen's Market

Where Customer Consideration comes first.

RENO INC.

THE BEST MOST DIVERSE!

• BICYCLE EXERCISERS
• BELT MASSAGERS
• EXERCYCLES

RENTALS SALES

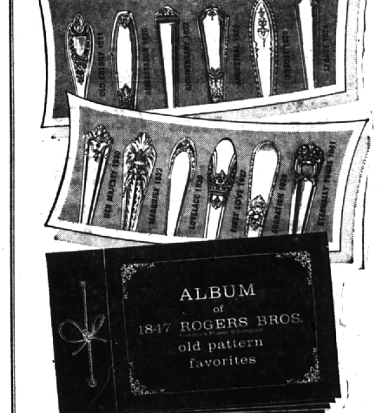
LI 7-7016 or MI 7-0111
610 N. Woodward, Royal Oak
(Between 11 and 12 Mile Roads)
1203 S. Woodward, B'ham
(Just S. of Lincoln)

The Time Is Limited! SPECIAL ORDER SERVICE

Important to Those Who Have Discontinued Patterns In 1847 ROGERS BROS.

NOTE: It has been 5 years since you have been able to add or replace your favorite 1847 pattern. Order now to assure delivery. Some patterns date back to 1911. Only 4 weeks to take advantage. A small deposit will reserve your order!

IS YOUR "TREASURED PATTERN" SHOWN HERE?



ALBUM of 1847 ROGERS BROS. old pattern favorites

Now available on our popular SPECIAL ORDER SERVICE

Take advantage of this special opportunity to fill in and add on to your service in one of these lovely patterns you chose so proudly years ago. All orders accepted through February 28, 1961 for delivery in August. Ask now. This service will not be repeated for many years to come.

1847 ROGERS BROS. America's Finest Silversmiths

2 Stores Now To Better Serve You . . .

Budget Terms

Connolly's JEWELERS

Downtown—16 W. Huron, Pontiac FE 2-0294
Miracle Mile—New Location—FE 2-8391
2203 So. Telegraph

Leading the Parade

President and Mrs. John F. Kennedy drew left in the rear seat. Still recuperating from a recent Caesarian section, Mrs. Kennedy was not able to fully participate in all the inaugural festivities.

Jan. 26, 1961 THE BIRMINGHAM (MICH.) ECCENTRIC 5-C

Cotter to Address SAE Group Meeting

Bart Cotter, 1915 Bathurst, Bloomfield Hills, will speak before the Mid-Michigan section of the Society of Automotive Engineers Jan. 30.

Cotter, chief engineer for the Fisher Body division of General Motors, will discuss "Corvair's Challenge to the Body Builders" at a dinner meeting in Frankenmuth.

With the use of color slides, he will show how Fisher Body developed the body for the new Chevrolet, based on concepts developed with the Corvair.

STOP LOOK

Machus

Gracious Dining Without Extravagance

This Way

To Your Valentine's Heart

We'll Mail Valentine Candies anywhere in the U.S.A.
Special Birthday Cakes, too

Restaurant 8:30 a.m. to 8:00 p.m. Dastry Shop
160 West Maple MI 4-1816

Step End Table. Top 17" x 27" \$32.95

EARLY AMERICAN TABLES . . . the best of yesterday for today!

Authentically inspired Early American tables by famous Baumritter that bring new lustre to your home! Check these stand-out features:

- solidly built of selected rock maple and birch for years of service
- hand-finished to a rich brown outgum tone—satin-smooth tables are a delight to the fingertips
- prices to delight the wise and comparing shopper—these are real budget beauties

Early American tables—the grace notes of your home! Come see.

Corner Table. Top 28" x 28" \$39.95

Lamp Table. Top 20" x 20" \$32.95

Cocktail Table. Top 19" x 40" \$32.95

Open Thursday, Friday, Saturday 'til 9

Royal Oak Furniture Co. Phone 4 3-1330
215 S. WASHINGTON AVE. ROYAL OAK, MICH.

You will find many bargains in The Eccentric Classified Columns.

STOP LOOK

Featherlite Dress or Suit Garment Bags

Ideal for Home & Travel

Reg. \$4.95 \$3.49

- Zipper Opening
- 12 gauge heavy duty clear Vinyl Plastic
- Fold in half and snap for easy handling

EXPERT REPAIRING On Luggage, Leather Goods, Trunks, Handbags, Zippers Repaired, Replaced

HARRISON'S LUGGAGE AND LEATHER GOODS

Open Friday Evenings 'til 9

303 E. MAPLE BIRMINGHAM MI 4-6088
Located Between Hunter & Woodward

Special Salute!

Life Insurance

Men of the Year

Congratulations to Oakland County's Top Life Insurance Men!

Each year the most outstanding life insurance men in Oakland County are honored by their companies for extraordinary service to both clients and community. Here are the men named for their leadership during 1960 in a profession that helps provide financial security and a brighter future for thousands of families. Detroit Bank & Trust proudly salutes these men and their companies.

DETROIT BANK & TRUST

89 CONVENIENT OFFICES MEMBER FDIC

ROBERT B. BECKER Life Ins. Co. of Virginia Puhl Agency	MERRILL CHASE Metropolitan Life Vincler Agency	CHARLES DEPEW National Life & Accident Baron Agency	ROBERT B. LAUGHMAN National Life & Accident Baron Agency	RICHARD L. MINEWEAHER Equitable Life Assurance Clark Agency
RONALD R. BLANZY Metropolitan Life Gibbons Agency	ALEX CLARK New York Life Moston Agency	GEO. B. DIXON—Manager Life Ins. Co. of Virginia Puhl Agency	ALBERT E. LEHNER State Farm Ins. Co. McGill Agency	OWEN C. STANSELL Prudential Ins. Co. Maison Agency
HOWARD BRATT State Farm Ins. Co. Gibbons Agency	JOSEPH J. DEMAGGIO Life Ins. Co. of Virginia Marcus Agency	HOWARD H. FINSILVER Business Men's Assurance Cook Agency	RAYMOND A. MILLER National Life & Acc. Roberts Agency	FRANCIS J. STACY Lincoln National Life Autrober Agency