

YOUR OWN ESTATE



For Gracious Living

- 3 extra size bedrooms
- 12' x 16' Dining room with fireplace
- 12' x 18' Mediterranean room
- Large lot with lovely landscaping
- \$25,000

FRED PIERCE, INC.
Realtors

(3 Blks. N. of Maple)
460 N. Woodward

MI 7-1414

Southfield News Briefs

Saturday Rec Programs Will Be Continued

SOUTHFIELD—The Southfield Parks and Recreation Dept. announced that it will continue an eight-week program in eleven schools that began Saturday. The Southfield School district is cooperating in the program.

Running from 9 a. m. to 4 p. m., excluding an hour at noon for lunch, the activities will include crafts, games, volleyball and basketball. A small charge will be made for craft materials.

The high school program is for teenage boys only but the swimming pool will be open to all boys and girls. Schools in the program are Birney, Bruce, East Southfield, Grace, Lathrup, Lederle, Magnolia, McKinley, Northbrook, Southfield No. 10.

LATHRUP Recreation Commission is also offering programs at Birney and Lederle Schools. Residents interested in activities not provided for may contact department's superintendent Peter J. Cristiano.

New Citizens Group Formed in S'field

SOUTHFIELD—The newly formed Citizens for Southfield, organized by a former candidate for City council and his two sons, includes about 30 residents in its membership.

Founder Dr. I. Z. Siverman, 27367 W. 10th Road said the group has no connection with any past organizations with similar names. Its membership includes his sons, Jerome J. and Allen B.

Siverman said the group might not endorse any candidate but that it intended to watch them in action after they are elected.

He said other members of the organization want to remain anonymous.

S'field Democrats Will Co-Sponsor 'Inaugural Dance'

SOUTHFIELD—An "Inaugural Dance," co-sponsored by the Southfield Democratic Club and the Farmington Democratic Club will be held Jan. 20 at Glen Oaks Country Club of Farmington.

Leonard Blazak, 19354 Addison, head of the Southfield club, is co-chairman of the dance with Mrs. Westcott E. Peterson of Farmington. Tickets are available through the chairmen.

S'field Mayor Appoints New CD Director

SOUTHFIELD—Robert L. Stark, 16341 Addison, was appointed civil defense director Friday by Mayor Donald L. Swanson. He is the first full-time director in about two years.

Mrs. Mary Hershey, the last full-time director, resigned about two years ago when she moved. The Southfield Police Dept. has handled civil defense since that time.

THE MICHIGAN Office of Civil Defense informed Swanson that the city must have an ordinance to

establish the office of civil defense and a director.

They also said the city's civil defense plans must be filed with the state office in order for the city to participate in any state aid programs for civil defenses.

The council has been asked by Swanson to act on the matter. His appointment of Stark does not require council approval according to the charter, Swanson said.

S'field Gets Vote On County Board Of Supervisors

SOUTHFIELD—The City of Southfield, along with Royal Oak and Madison Heights, will send a supervisor to the County Board of Supervisors this week. Membership of the board thus increases from 83 to 85 supervisors, with Ferndale losing a seat.

Southfield's growth, as shown in the 1960 census, almost qualified it for two additional seats with a population of 31,501. The Board's Legislative Committee tried last year to anticipate the '60 census with a new formula for city representation.

Their schedule allowed for a one-seat gain by Southfield. The scale was altered in 1959 in order to keep the size of the County Board down as was previously done in 1955. Using the old scale, the 1960 census would have brought the Board to at least 100 members.

THE NEW SCALE, as it affects Southfield, allows three seats for a population of 22,501 to 32,500. Another thousand population would have given the city one more seat.

Northbrook PTA Meets Tuesday

The first PTA meeting of the new year at Northbrook School will be held Tuesday at 8 p. m. The speaker will be Dr. Walter A. Binder. His topic will be "Healthy Sex Development," dealing with problems of the normal child.

Coffee will be served following a question and answer period.

Everyone reads Eccentric classified ads—because they're packed with bargain items every week.

Got Any News?

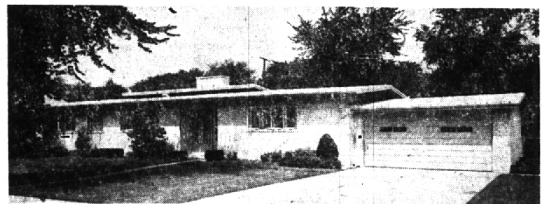
Your correspondent would like to hear from you. Here are the correspondents and the areas they cover:

If you live in Beverly Hills: (Covering the Village of Beverly Hills and the South Berksiches) CALL: Mary Wilde, MI 4-9504

If you live in Bloomfield township, south of Maple: (Covering all of Bloomfield township, from Maple road south) CALL: Marian Patrick, MA 6-3029

If you live in Bloomfield township, north of Maple: (Covering all of Bloomfield township, from Maple road north, east to Woodward) CALL: Carol Darling, MA 6-6348

If you live in Franklin: (Covering all of the villages of Franklin, Bingham Farms and Wood Creek Farms) CALL: Nita Hard, MA 6-3224



Is Quality Important To You?

Here in this superb contemporary ranch every demand of the sophisticated home buyer is fully met. Each detail of Design and construction bespeaks artistry and super quality. In addition to an elegant living-dining room for more formal Living, there is a cozy library for family life. Incidentally it can serve admirably as a fourth large bedroom. A paneled family Room and a wonderful roofed patio are splendid for informal Entertaining. Two complete ceramic baths and a dainty powder Room in lovely color are provided. Just reduced to \$32,500.

Walsh, James & Wasey Co.

Realtors Since 1918

42 Years of Continuous Service in Birmingham

431 S. Woodward Ave. Midwest 4-6500
Birmingham Detroit, JO 4-6033

TWO TERRIFIC VALUES



ATTRACTIVE BEVERLY AREA—80 foot Site.

- Good-sized living room with fireplace—Separate Dining ell.
- 3 Bedrooms—1½ Baths. Kitchen with Breakfast space.
- Paneled Porch. Full Basement. GAS HEAT.
- Carpeting. Disposal. Aluminum storms and screens.
- Priced at \$22,600. BRING AN OFFER.



CONVENIENT CITY SITE—Walk to Public and Catholic Schools, Detroit buses, and Stores.

- Charming living room with Bay and marble fireplace.
- Separate Dining room. Kitchen with Breakfast area.
- Two Bedrooms on 1st floor. Large Bedroom on 2nd.
- Full Basement. 2-car Garage. Large Screened Porch.
- Redecorated in 1960. New carpeting. Disposal. Dishmaster.
- PRICED AT FHA VALUATION. Good loan commitment.
- Won't last long at \$19,850.

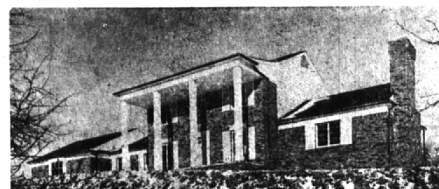
SNYDER KINNEY & BENNETT
INC.

Realtors

239 So. Woodward

MI 4-7000

IN RUDGATE



This magnificent new home is built by N. Galle as evidenced by its fine construction and highly functional floor plan.

The first floor has spacious entrance hall opening to a gracious living Room and Dining Room and a walnut paneled Family Room. Also on the first floor, there is a huge Bedroom suite with wood burning fireplace.

The second floor has three good sized bedrooms and two Baths. All this on a beautiful high site in Rudgate near Cranbrook and Christ Church at . . . \$73,800.

IN THE VILLAGE



Convenient to shops and transportation is this Bloomfield Village classic. Located on tree lined Morningview Terrace this superbly built home has large living Room, separate Dining Room, Library and large screened porch. The second floor has four extra sized Bedrooms with 2½ Ceramic tile Bathrooms. Basement floor is attractively tiled and fine carpeting and draperies are included. Just six years old this home is an excellent value at . . . \$47,500.00.

MAX BROOCK INC.

300 S. Woodward

MI 4-6700