

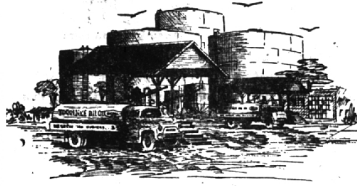
## McKenzie Named To New Position

W. Douglas McKenzie, 2290 Pembroke, Birmingham, has been appointed assistant general agent of the Otto-Houlihan agency of The Mutual Benefit Life Insurance Company.

Mr. McKenzie has had nine years of life insurance experience, all with his present company.

He is a member of the Detroit life underwriters association, the Detroit life insurance and trust council, and the general agents and managers association.

### "We Serve the Suburbs"



... fine furnace oils see the new "Custom Mark II" oil furnace that's revolutionized oil heating

**TORRENCE OIL Company**  
For Service Call: MI 4-9000

"Birmingham's Finest Selection of Men's & Boys' Footwear"



**Hush Puppies Sale For Men**

Selected Group  
**OXFORDS  
SLIPONS  
CHUKKAS  
AND AFTER SKI BOOTS**

All Colors, Sizes 6 1/2-12  
WERE \$8.95 to \$11.95  
**\$4.99 & \$6.99**

**Buster Brown**

For Boys  
Selected Group  
**Oxfords, Chukkas**  
Black, Brown, Buck Leathers  
Sizes 12 1/2-6 - All Widths  
WERE \$8.99  
**NOW \$4.99**

Taylor Made, Roblee, and Pedwin Shoes  
For Men  
Black, Brown, Cordovan, and Buck Leathers

Were \$10.99 to \$23.95  
**\$6.99 - \$7.99 - \$9.99 - \$12.99**

Men's & Women's  
**House Slippers**

Daniel Green & Others  
WERE \$5 to \$12.95  
**\$2.99 & \$4.99**

Not all sizes in each style

## BUSINESS BRIEFS

### Behind The Store Fronts

With  
**ANGUS  
McKELLAR**



Michael and Delphine Michaels, of the Curiosity Shoppe, are busily scouring the Eastern regions this week in their search for new items for their unusual shoppe. It might be said that the local Curiosity Shoppe is a second cousin (or it is "twice removed") of the famous shoppe in London, England, with the big difference, of course, that the London shoppe leans toward china items. Our local Curiosity Shoppe is noted for its antiques, and early American furniture.

**BIRMINGHAM** area business people on their desks a new Facts of Birmingham folder recently mailed to them by this newspaper.

The new facts folder points out the remarkable rate of expansion enjoyed by this area in the last year, along with pictures of new buildings and remodelings of old buildings. It also points out business people are population projection figures. The folder quotes the Detroit Metropolitan Area Regional Planning Commission in saying that the City of Birmingham will have a 32,000 population by 1970, and that there will be an additional 45,000 persons in Bloomfield and West Bloomfield townships by that date.

**THE BIRMINGHAM** trading area is one of America's wealthiest, with an average spendable income of \$10,857 per family. Also of particular interest is the fact that while Birmingham proper has but five per cent of Oakland county's population, the percentage of RETAIL SALES is over two TIMES as high as its percentage of population.

As a further breakdown, and of vital interest to all business people (as well as to the consumer), Birmingham enjoys a volume of business amounting to over two times as high in FOOD sales as in percentage of population. Over three and one-half TIMES as high in DRUG sales, over four TIMES as high as in APPAREL, over two TIMES as high in HOME FURNISHINGS, and over three and one-half TIMES as high in AUTOMOTIVE sales. These figures are from a nationally known research source.

**ADOLPH DEUTSCH**, president of the American Savings and Loan Association, reports that their assets soared to \$108,321,234.80 in 1960, an increase of more than eight million dollars, making it the best year in the institution's history. The association paid out dividends of \$2,948,387 in 1960 to more than 50,000 account holders, according to Deutsch.

**BOB DAVIS** of Birmingham Travel, tells us that readers interested in the British Isles are invited to a "Meet the British" program tonight (Jan. 12) 7:30 to 9 at the WWV auditorium. The program will include brief talks on Eng-

land, Scotland, Wales, N. Ireland, and the Channel Islands. Also two color films will be shown. Admission free.

Tonight's program is part of "Visit Britain Week" running through Jan. 15. The Sheraton-Cadillac is one of the chief centers for the festivities where the White Horse Cellar Tavern, a recreation of the original White Horse Cellar in Edinburgh, is installed.

Birmingham Travel is offering a series of summer trips to Britain of two or three weeks which may be extended to the continent, if desired, according to Davis.

ALSO, in connection with Visit Britain Week, Fabrey Motors, down in Ferndale, invites any person contemplating a European vacation to visit their showroom and inspect automobiles brought here by the British Motor Corporation and which may be picked up abroad through the BMC overseas pickup plan.

### Ad Agency Names Group Supervisor

Appointment of Donald F. Mahlmeister, 2621 Bretby Drive, as group supervisor of the commercial products division, MacManus, John & Adams, Inc., Bloomfield Hills, was announced by Fred J. Hatch, 3040 Henhawk Road, Birmingham, senior vice president of the advertising agency.

Mahlmeister joined M&A in 1948. Dale Brubaker, 5385 Ryewood, Bloomfield Hills, and Roy M. Marshall, 2953 Summerville Lane, Birmingham, have been advanced to account supervisors.

### Federal Reserve Promotes Rusin

Edward A. Rusin, 1589 Hazel, Birmingham, was recently appointed an examiner for the Federal Reserve Bank of Chicago.

Rusin attended the inter-agency bank examiners school in Washington, D. C., and was one of 60 to successfully complete the course.

The appointment was announced by the board of governors of the Federal Reserve System in the Capital.

Before his promotion, he was assistant examiner. Previously, he had been with the Citizens Commercial and Savings Bank in Flint.

## HENRY W. MOSS & SON

Proudly Presents

### A Salon Showing

January 12, 13, 14



**FIRST AMONG THE FINE CARS OF THE WORLD**

**MERCEDES-BENZ**

300 SLR CHAMPION ROAD RACING MOVIES

SEE AND DRIVE THE FABULOUS 300 SL

AND THE DISTINCTIVE 300 SEDAN



220 S

13900 LIVERNOIS

TE 4-5142

## Troy Man Promoted By General Motors

Albert N. Hoig, 885 East Square Lake Road, Troy, was named head of the processing department of General Motors research laboratories, succeeding William E. Nixon, 3801 South Miller Way, Birmingham, who is retiring.

He joined General Motors in 1936, after employment by the Industrial Diamond Corporation and Ford Motor Company. With the processing department of GM re-

Jan. 12, 1961 THE BIRMINGHAM (MICH.) ECOCENTRIC 3-B

search, Hoig served as tool maker, bench leader, supervisor in charge of tool and gage activities, general foreman and in 1957 was named assistant department head. Nixon, a native of Ontario, Canada, joined GM Research Laboratories in 1926. He was named assistant head of the department in 1946 and six years later succeeded the late Fred Walton as department head.

## BETTER ROOM...

Bigger, easy to enter... more headroom, more stretch-out space!

## BETTER RIDE...

Twin-Triangle Stability straightens the curves and smooths the bumps!

## BETTER DRIVE ONE!

Let this new Oldsmobile speak for itself... test the best!

## OLDS FOR '61

... different in so many better ways!



SEE YOUR LOCAL AUTHORIZED OLDSMOBILE QUALITY DEALER

SUBURBAN MOTORS CO., INC., 565 S. WOODWARD AVENUE

TUNE IN THE "BING CROSBY GOLF TOURNAMENT" • SUNDAY, JAN. 22 • ABC-TV AND RADIO



## MICHIGAN'S LEADING BANK

—serving more than 800,000 customers

In Detroit and 22 Suburban Communities

In Michigan and the Great Lakes Area

Throughout the United States, in Canada, and Overseas

Statement of Condition, December 31, 1960

### RESOURCES

Cash and Due from Banks	\$ 467,221,615.09
United States Government Securities	569,506,836.05
Other Securities	229,280,718.13
Loans:	
Loans and Discounts	\$659,105,436.04
Real Estate Mortgages	138,221,344.83
Federal Reserve Bank Stock	797,326,780.87
Bank Premises	4,200,000.00
Customers' Liability—Acceptances and Credits	17,060,845.64
Accrued Income and Other Resources	2,870,267.61
	10,488,954.57
	\$2,097,965,017.96

### LIABILITIES AND CAPITAL FUNDS

Commercial Deposits	\$1,100,352,261.32
Savings and Time Deposits	463,021,509.76
Deposits of United States Government	108,887,327.78
Other Public Deposits	76,650,783.70
Deposits of Banks	154,982,919.23
Total Deposits	\$1,903,894,801.79
Acceptances and Letters of Credit	2,879,267.61
Accrued Expenses and Other Liabilities	25,701,336.01
Capital Funds:	
Common Stock (\$12.50 par value)	\$ 40,000,000.00
Surplus	100,000,000.00
Undivided Profits	25,489,612.55
	165,489,612.55
	\$2,097,965,017.96

United States Government Securities carried at \$237,288,267.02 in the foregoing statement are pledged to secure public deposits, including deposits of \$14,392,258.17 of the Treasurer, State of Michigan, and for other purposes required by law.

### BOARD OF DIRECTORS

Howard C. Baldwin Partner—Baldwin, Bass & Baldwin	Ray R. Eppert President—Burrage Corporation	B. E. Hutchinson Detroit	George E. Parker, Jr. Executive Vice President
Henry T. Bodman President	Malcolm F. Ferguson President—Bentley Corporation	Ralph T. McElvenny President—American National Gas Company	Robert B. Sample President—Windsor Cigarette Corporation
Brentiss M. Brown Chairman—Michigan Bridge Authority	Charles T. Fisher President—Fisher and Company, Inc.	John N. McLucas Senior Vice President	Nate S. Shapiro Chairman—Cantelmann Drug Stores, Inc.
M. A. Cudlip President and Treasurer— McLank Steel Corporation	Lawrence P. Fisher Director—General Motors Corporation	Thomas E. Millip President—National Steel Corporation	R. Perry Shorts Chairman—Second National Bank of Sylvania, Michigan
Harlow H. Curtice Director—General Motors Corporation	William M. Day President—The Michigan Bell Telephone Company	F. W. Mich Vice President—Finance and Insurance—Carpenter Corporation	Donald F. Valley Chairman of the Board
Leland I. Doan President—The Dow Chemical Company	Joseph E. Hudson, Jr. Vice President— The J. E. Hudson Company	Peter J. Monaghan Partner—Monaghan & Moughan & Cramer	C. E. Wilson Director—General Motors Corporation

## NATIONAL BANK OF DETROIT

Member Federal Deposit Insurance Corporation