

ADDITIONAL SPORTS

Risky Sky Diving Breaks Up Monotony of Routine Sports

By LES LANGLOIS
Sports Writer

Getting tired of routine sports? Want to try something a little different? Hundreds of daredevils are falling for sky diving every year. Considered the world's most dangerous sport, acrobatic parachuting is gradually penetrating the world of sports. Surpassing both skiing and skin diving in thrills and skill, it originated in Europe and is most popular in France where entire families participate.

Competition consists of two main varieties. Precision jumping attracts the more experienced daredevils and consists of leaping from 10,000 feet and performing various aerobics within a 30-second delay before opening the chute.

THE JUMPER MUST achieve perfect body balance from the moment he leaves the aircraft in order to execute back flips, figure eights or somersaults while maintaining enough control to pull the chute cord in time. Jumpers build up scores by accumulating points for the various aerobics performed.

For the less experienced jumpers, there's spot landing which calls for leaping from an altitude of 5,000 feet and opening the chute after 20 seconds of free-fall in order to land within a marked or target area.

EACH RING OF ground circling the bull's eye of the target is worth a certain number of points and the highest scorer wins the event.

From 50 to 60 jumps are necessary in progressing from the spot landing to the precision jumping stage.

Sound difficult? You bet your life. And once you've mastered the courage and developed the knack of leaping into space from a speeding plane, the thrill never wears off.

Like most other sports, timing and coordination are extremely important factors in achieving success. But, in no other sport is the price for mistakes so high.

MICHIGAN HAS FOUR jump clubs at Saxon, Jackson, Monroe and Milan while over 300 groups have organized throughout the country in the last few years.

Both national and world championships are held annually with competition open to men and women. Yugoslavia is the present all-events world champion.

The sky's the limit in sky diving which places no age limitations on the sport. Although 15 is considered the youngest age, 10-year-olds with their parents' consent have been known to compete in the sport.

AT THE OTHER extreme, the world's oldest jumper, Jack Clapp of Milford, Michigan didn't quit cumulating points for the various aerobics performed.

Physical and mental requirements, there's spot landing which calls for leaping from an altitude of 5,000 feet and opening the chute after 20 seconds of free-fall in order to land within a marked or target area.

Transport planes equipped to carry as many as 10 jumpers are used for international meets while Cessnas and helicopters carrying two or three parachuters do the job for local and military meets.

HOWEVER, NEVER more than three aircrafts are used in these events.

BHAM ECCENTRIC Page
Thursday, January 5, 1961 7-B

watch and altimeter mounted on a panel on the reserve chute in front of the jumper. These instruments signal the jumper as to when to pull the cord.

The watch measures the time of the fall and the altimeter measures the distance with each instrument serving as a check on the other.

THE INSTRUMENTS are checked every few seconds while the jumper is falling. The thinner the air, the faster the jumper falls and most of them prefer jumping after a rain because the ground is softer and makes for better landing.

Jumping from an altitude of 10,000 feet with normal winds, the jumper falls about 20 feet per second and hits the ground in about 50 seconds if the chute is opened at 3,000 feet.

If the main and reserve chutes fail to open, the jumper would hit the ground in a mere 70 seconds from 10,000 feet.

As vigorous as the sport sounds, records fail to show a single fatality due to defective equipment. Misjudging the timing in opening the chute is the major cause of fatalities.

Some sports, eh?

B'field Art Association Offers Seven Classes

Art classes for the novice or the advanced student will begin Jan. 16 at the Bloomfield Art Association, 361 North Woodward, Birmingham.

Seven classes are offered for adults and a Saturday workshop for youngsters. The classes cover 16 weeks, however, students wishing to enroll for half-terms may do so.

SCULPTURE composition will be open to beginning and advanced students. Under the direction of Steve Kline, the class will be directed toward giving the student knowledge of various sculptural media. Ceramic sculpture will also be taught.

The three classes in sculpture composition will be Mondays from 9:30 to noon, 1 to 3:30 p.m. and 7 to 9:30 p.m. Spring term starts Jan. 16.

STUDIO ART, taught by Albert Mulder, will be geared to the part-time artist. Individual instruction will be given in both the materials and the development of concept and skill to culminate in drawings and painting.

Classes will be Mondays from 7 to 9:30 p.m. and will be open to beginning and advanced students. Portrait painting and drawing with Mildred E. Williams as instructor will deal with drawing and painting from the costumed model. No specific style or manner will be

stressed. Two classes will be open to beginning and advanced students. They will be held Monday and Tuesday mornings from 9:30 to noon.

LIFE DRAWING, highlighting sketching in any medium from the live model, will be under the direction of Clifford R. W.

Classes will be held Tuesday evenings from 7 to 9:30 starting Jan. 7. Watercolor painting, taught by Mary Jane Bigler, will stress a creative approach to still life, flower studies and landscapes. Outdoor trips are also planned for this class.

A class for beginning and advanced students is scheduled from 9:30 to noon on Wednesdays. Advanced students will be tutored from 1 to 3:30 p.m. Wednesdays. Classes begin Jan. 18.

OIL PAINTING for beginning and advanced will be taught by Kathleen Birch on Thursdays from 9:30 to noon and 1 to 3:30 p.m. Still life and flower studies will be the subject matter. Classes start Jan. 19.

Contemporary jewelry, open to all interested in designing and executing their own jewelry, will be taught by Nancy E. Fanzini. Individual instruction will be given in silver, gold, stone setting and jewelry techniques. Classes will be from 7 to 9:30 Wednesday evenings. Spring term starts Jan. 18.

THE SATURDAY Young Peoples Workshop, under the direction of John W. Martin, will be divided into two sessions.

Grades five and six will meet from 9 to 11 a.m. Saturdays from Feb. 4 through March 11. Grades one and two will meet from noon to 1:30 p.m. during the February-March session.

Grades seven to twelve will meet from 9 to 11 a.m. March 18 through April 29. Grades three and four will convene from noon to 1:30 p.m. during the March-April course.

MRS. ROBERT S. Bender, 800 Covington Road, Birmingham, is in charge of registration for the adult classes. Registrations will be accepted at the BAA headquarters. Registrations for the children's workshop should be sent to Detroit Museum of Art Founders Society, Extension Services, Detroit Institute of Arts, 5200 Woodward, Detroit.

Holiday in Florida

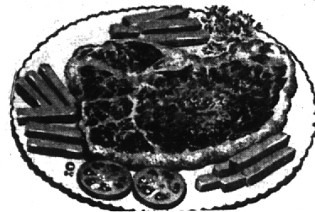
Bill Rohn, 9th grade student at Barnum, recently returned from a New Year's holiday with his grandparents, Mr. and Mrs. John L. Sullivan of St. Petersburg, Fla. Bill is the son of Mr. and Mrs. Richard G. Rohn of Maryland Boulevard, Birmingham. This was his first trip by air.

A subscription to The Eccentric brings you the community's top news events 52 times a year.

STEAK

SIRLOIN

99^c lb.



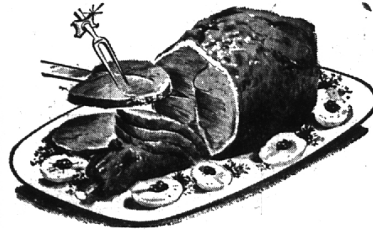
Fresh Daily

Ground Chuck . . . 69^c lb.

LEG 'O LAMB

or Saddle of Lamb

69^c lb.



DAIRY DEPARTMENT

- 93 Score LAND O' LAKES BUTTER . . . 69c lb.
- ALLSWEET MARGARINE . . . 2 lbs. 49c
- Mild PINCONNING CHEESE . . . 49c
- Tooting Lane Medium FRESH RANCH EGGS . . . 49c doz.

- Snowdrift Vegetable SHORTENING, 3-Lb. Can . . . 59c
- Star Cross TOMATOES, No. 2 1/2 Cans . . . 2 for 65c
- Star Cross DICED CARROTS, No. 303 cans . . . 2 for 23c
- Pfeiffers Chef SALAD DRESSING 8-oz. BTL. . . 35c

AWREY

- Pkgs. Saily Poppysseed French Rolls . . . 39c Package
- Louisiana Ring Crunch Cakes . . . 62c Each
- Extra Tender Twisted Glazed Donuts . . . 6 for 49c
- Sliced Cinnamon Toast Bread . . . 39c Loaf.
- (FRIDAY AND SATURDAY ONLY)
- German Sweet Chocolate Walnut 3 Layer Cakes . . . 98c Half; \$1.95 Each
- (FRIDAY AND SATURDAY ONLY)
- Danish Almond Crunch Coffee Cakes . . . 69c Each
- Paw Paw GRAPE JUICE, 24-oz. Bil. . . 29c
- New Minute Maid ORANGE JUICE, 6-oz. can . . . 5 for \$1
- Bumble Bee, White Meat CHUNK TUNA . . . 3 cans \$1
- Giant INSTANT NESCAFE, 10-oz. . . 99c

Hills Bros. or Beechnut

COFFEE



Reg. or Drip 59^c lb.

Swansdown Angel Food

CAKE MIX

- Strawberry
- White • Lemon Chip
- Your Choice 39^c



Fire's

180 WEST MAPLE AT HENRIETTA

means new life to old furniture

We Have Custom Upholstery Service

Call Us Now—Reliable Workmanship and Materials

Why suffer with worn out, out-moded furniture when our service is so fast, our prices so low . . . and the job we do is so perfect? We can renew, restyle and will return like new any upholstered piece in your home.

AT ROYAL . . .

REUPHOLSTERY

AND

Savings GO TOGETHER

Our representative will be glad to call on you day or evening with sample books, to give you an estimate.

NEW SHIPMENT OF BEAUTIFUL SPRING FABRICS HAVE JUST ARRIVED! SEE THEM TODAY!

ALL WORK DONE IN OUR OWN SHOP

ROYAL MATTRESS & FURNITURE FACTORY

YOUR GUARANTEE: 26 years in same location

22320 WOODWARD, FERNDALE
5 Blocks' South of Nine-Mile Road

LI 2-4000 -- LI 1-5788
Open Mon., Thurs., Fri., Sat., Until 9 P.M.

BLOOMFIELD
Birmingham, Mich. • Midwest 4-6006 • A United Detroit Theatre

BIRMINGHAM
Birmingham, Mich. • Midwest 4-3533 • A United Detroit Theatre

NOW SHOWING

DOORS OPEN WEEKDAYS—MON.-FRI. AT 6:45 P.M.
CONTINUOUS SAT.-SUN.—FROM 1 P.M.

NOW SHOWING

DORIS DAY-REX HARRISON
JOHN GAVIN
PLUS! THIS FUNNY
SURPRISE CAST! SURPRISE STORY!
PRIZE-PACKAGE COMEDY!
COLUMBIA PICTURES PRESENTS A STANLEY DONEN PRODUCTION
YUL BRYNNER
MITZI GAYNOR
NOEL COWARD
SURPRISE PACKAGE
SPECIAL CHILDREN'S MATINEE SATURDAY

LEVIS PRESLEY
G.I. GIANTS
THE VAN CLIFFEN LAUGHTON
LOANER BEN BEAGS
OUR NEXT ATTRACTION
NATALIE WOOD - ROBERT WAGNER
ALL THE FINE YOUNG CANNIBALS!
PLUS!
GINA LOLLOBRIGIDA
Pierre BRASSEUR-Marcello MASTROIANNI
Melina MERCOURI-Yves MONTAND
WHERE THE HOT WIND BLOWS!
SPECIAL CHILDREN'S FUN-PACKED MATINEE SAT.
LOADS OF CARTOON-COMEDIES-SPECIAL FEATURING
DOORS OPEN AT 12:30 P.M.—BIRTHDAY PARTY GROUPS HONORED