

Municipal League To Hold Jan. 12 Meeting in S'field

Municipal officials from Birmingham, Bloomfield Hills, Beverly Hills, Franklin, Bingham Farms, Wood Creek and Lathrup will gather in Southfield Jan. 12 with other Oakland County representatives as well as those from Genesee and Macomb counties for the annual meeting of Region IV of the Michigan Municipal League.

Attending will be mayors, presidents, councilmen and other elected and appointed officials from League-member cities and villages in the three-county area.

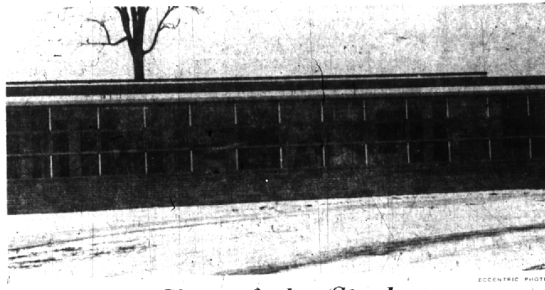
The program will open with a session on "Financing Off-Street Parking Facilities." Stratton S. Brown, bond attorney, will speak on problems related to providing parking facilities, touching on legal aspects, and stressing financing programs available to Michigan municipalities.

A PANEL of municipal officials will give a comparative description of programs in operation in their cities and villages. The session will be moderated by Mayor William Young of Swartz Creek.

The second half of the program will be highlighted by Councilman William T. Patrick of Detroit who will examine the proposed Detroit tax on wages, with particular emphasis on its effect on neighboring communities, discussing such matters as reciprocity provisions, administration, accounting, etc.

Mayor Philip E. Rowton of Pontiac will act as moderator in this session.

John H. Huss, director of the Michigan Municipal League, will speak on the League's 1961 legislative program at a dinner session. The meeting will close with the annual election of regional officers for 1961-62.



Sign of the Stork

Upon hearing the news that Terry School's principal, Don Barba, of Pontiac, became the father of a baby girl last Thursday morning, Wilfred Hinz's and Maurice Polton's 6th graders publicized the birth by hanging an announcement along the windows of the school reading "It Is A Girl!" The addition to the Barba family was named Julie Lynn and she has a three-year-old sister, Laurie.

Parking Spaces Determined For Island View Project

Birmingham city commissioners adopted seven recommendations Tuesday night that will be placed in effect if the Island View parking lot becomes reality.

The recommendations for parking spaces in the proposed lot behind the hotel building on N. Woodward and the immediate commercial area were made by Commissioner I. B. Gare.

Commissioners vacated Island View Drive, Park St. and an access driveway but adjourned a public hearing on confirmation of the roll at Tuesday's meeting.

THE RECOMMENDATIONS

1. Except for four spaces adjacent to stores just north of Harmon, that street parking on the west side of Woodward be unrestricted, free, all-day parking.
2. That those four spaces have two-hour meters.
3. That the 12 parking spaces south of the proposed lot, on the east side of Woodward, be limited to two-hour metered parking.
4. That parallel parking instead of angle parking be established on the east side of Woodward.
5. That the 18 spaces in the area

north of the present Park St. be four-hour metered parking; that the two spaces in front of Carrie Lee's restaurant be limited by sign only to two-hour parking.

6. That the 39 spaces in the access drive on the east side of Woodward from Park St. north be limited to all-day metered parking.

7. That 29 parking spaces in the back row of the 140-car space lot be assigned to all-day parking at 25 cents per day, with the other 111 spaces to be four-hour metered parking at five cents per hour.

If the parking lot is carried to completion, these provisions would make possible 214 metered parking spaces in the lot, on the street and in the access drive.

Municipal Court In Birmingham

Before Judge John C. Emery, Jr. Wednesday
Robert E. Billings, 18231 Devonshire, Beverly Hills, fined \$25 for speeding and violation of a stop sign.

In Culture Series

Pilar Gomez and her company of young dancers will appear in the third presentation of the Holy Name Culture Series on Jan. 12 at 8:20 p.m. in the Marian High School auditorium.

The performance is open to the public. Tickets may be secured through Mrs. James F. Murphy, 1313 Dorchester, Birmingham.

Our Sale is being lifted... More goods... wonderful things to realize!

SALE

Dresses, Suits and Coats

1/3 to 1/2 Off

Lingerie, Jewelry, Bags, Blouses, Sweaters and Skirts. A Selection of Lovely Hats.

ALL GREATLY REDUCED

No Returns
All Sales Final

Penny Pinchers
6:50 p.m.
Franklin Village, Mich.
Open Thurs. eve. 'til 8 p.m.

JULIE in the FISHER B'L'D'G

PRE INVENTORY SALE

Dresses, Suits and Coats

1/3 to 1/2 Off

Lingerie, Jewelry, Bags, Blouses, Sweaters and Skirts. A Selection of Lovely Hats.

ALL GREATLY REDUCED

No Returns
All Sales Final

VIRGINIA DEVOY'S SHOP

CLEARANCE

EVERY PAIR MUST BE SOLD

SHOES!

Fashion's Finest SHOES

by Peacock—Camille Tweedie—Valentine Carmelette Fontana of Rome... and Our Own Custom Shoes



Values \$12.95 to \$24.95

NOW \$4.90 — \$7.90 — \$9.90
\$10.90 — \$12.90 — \$14.90

HOUSE SLIPPERS

Daniel Green & Others \$2.90

ALLURE CASUAL... Brand new fall style in suede, black or brown straps pattern, now \$5.90

1250 Pair On Our Huge Rack

Values to \$24.95 NOW \$7.90

Widths AAAAA to C

For quick clearance

LOWER THAN DEPRESSION PRICES!

750 Pair on Another Rack

Values to \$24.95 NOW \$4.90

Widths AAAAA to C

For quick clearance

LOAFERS & FLAT HEELS

Brown, Black or Grey

Widths AAAAA to C

While They Last \$5.90

UNBELIEVABLE, BUT TRUE!

HURRY! 750 Pair on the Big Rack HURRY!

Straps—Pumps

Black—Brown—Navy

Pr. \$2.90 or 2 Pr. \$5.00

ALL SALES FINAL

No Credits • No Exchanges • No C.O.D.'s

BURR

SHOE SALON

255 N. Woodward, Birmingham



Both Loose Tea and Teabags

SFIRE'S
180 W. Maple Ave.
Birmingham

A subscription to The Eccentric brings you the community's top news events 52 times a year.

TODAY AND EVERY DAY

Food That Tastes As Good As It Looks

Greenfield's RESTAURANTS

BIRMINGHAM—725 So. Hunter Blvd.
MIDTOWN—2951 Woodward Avenue
DOWNTOWN—1130 Griswold St.

ONLY ONE OF OVER 300 OPEN STOCK DINNERWARE PATTERNS—OFFERING A BROAD SELECTION TO FIT ANY PURSE OR PURPOSE—AT COMPETITIVE PRICES

Franciscan FAMILY CHINA

Maytime



Pastel pom-poms on sturdy china that is guaranteed for a full year. Created by one of our proudest brand names... Franciscan, makers of "the beautiful best in dinnerware..."

16 pc. set for four... 24.95

45 PC. SET... \$74.95

SERVICE FOR EIGHT

Ten Beautiful Franciscan Family China Patterns To Choose From At The Above Prices

PONTIAC POTTERY

Michigan's largest dinnerware specialty store

2099 S. Telegraph FE 2-8642

Adjacent to north side of Miracle Mile

Open Daily and Sunday 10 to 8

B'ham Traffic Injuries Minor During Week

Injuries in Birmingham from traffic accidents, since Wednesday of last week, were at a minimum with only one person requiring hospital treatment.

Leroy O. Jarvis, 65, of 910 N. Adams, Birmingham, was discharged from William Beaumont Hospital following treatment for lacerations of the lower lip. He was injured the evening of Dec. 28.

Allen S. Wisley, 51, 31775 Eastlady, Beverly Hills, was given first aid at the Birmingham police station for injuries suffered in an accident in the late afternoon of Dec. 29.

Jarvis was injured when his car veered to the left of the center line, while traveling south on Adams. He struck a car driven by Norman C. Henrickson of 1081 Oakridge, Birmingham. The accident occurred near 165 N. Adams.

Jarvis, who was driving with a frosted-over windshield was ticketed for driving against traffic.

WISELEY received a ticket for failure to yield to oncoming traffic. Driving east on Maple, Wisley ran a red light at Southfield, crossed over the center line and struck two cars waiting for the light.

The other cars were driven by Lynane L. Jilison, 20, of Detroit and Romano Frago, 46, of Pontiac.

Sensational Value

Hand Blown

LEAD CRYSTAL



Imported Directly From Sweden

Beautifully Styled

8 Goblets

Finely Crafted

8 Sherbets

8 Wines

Complete 24 pc. set \$23.95 Complete

Tilbury Pattern Exclusive at

LAKES'



WOODWARD at MAPLE

JEWELERS

MI 4-5315

"The Sterling Store of Birmingham"

Also Lakes' Silver Shop in Jacobson's — Grosse Pointe