

For The Choosey Family

Splendidly set on a beautifully landscaped site in rural Kennoway Meadows, this impressive, modern Ranch affords premium quality in every detail of Design and construction. The living and dining area is Exceptionally large and well proportioned. There are Two roomy pleasant bedrooms plus a paneled library or, if you wish, three nice bedrooms. Two ceramic baths in color serve family and guests conveniently. There is a family room and a full basement with rec. room. All in supreme good taste and now reduced to \$39,900.

Walsh, James & Wasey Co.

Realtors Since 1918
42 Years of Continuous Service in Birmingham
431 S. Woodward Ave. Midwest 4-6500
Birmingham Detroit, JO 4-6033

School Addition Contracts Let By Hills B of E

BLOOMFIELD HILLS—Construction bids on additions to Eastover and Pine Lake Schools were opened at Bloomfield Hills Board of Education meeting Tuesday night.
Low bid for general contracting of the two schools was submitted by Scharer Construction Co. with a base figure of \$209,000. Vohn Plumbing and Heating, Inc. had the low bid as mechanical contractors at \$69,300. Low bid for electrical contracting was from McGee Electric Co. at \$22,900. The board voted to award contracts to the low bidders.

THE BOARD ALSO authorized submission next month of bids for landscaping at Conant school. It heard a petition from Pine Lake school PTO for further development of a playground area at the school.
A number of possible site purchases for future schools were considered by the board, with no action taken at the present time.

Use of Schools By Other Groups Defined by Board

SOUTHFIELD—Further regulations covering use of school facilities by "school-use" groups were added to the policy of the school board at its meeting last week.
"School-use" groups were divided into three classifications by the board. These are school-affiliated, educational and city government groups; religious, political, social and veterans' groups as well as chambers of commerce and like organizations; and, last, cultural, civic and service organizations.
A board proposal that groups using school facilities be required to carry liability insurance to cover the time such facilities are occupied, especially if admission is charged, was referred to the school board attorney.

PROPOSALS for a senior high administrative salary schedule were referred to the salary study committee as were proposed revisions of athletic coach salaries and a request from visual aids director James McCune for an extension of his work year.

Got Any News?

Your correspondent would like to hear from you.
Here are the correspondents and the areas they cover:
If you live in Beverly Hills: (Covering the Village of Beverly Hills and the South Berkshires) CALL: Mary Wilde, MI 4-9504
If you live in Bloomfield township, south of Maple: (Covering all of Bloomfield township, from Maple road south) CALL: Marian Patrick, MA 6-3029
If you live in Bloomfield township, north of Maple: (Covering all of Bloomfield township, from Maple road north, east to Woodward) CALL: Carol Darling, MA 6-6348
If you live in Franklin: (Covering all of the villages of Franklin, Bingham Farms and Wood Creek Farms) CALL: Nita Hard, MA 6-3224

Detroit Woman Hurt In 2-Car Collision In Beverly Hills

BEVERLY HILLS—Mrs. Winifred Day of Detroit was reported in satisfactory condition at William Beaumont Hospital following a two-car collision Saturday noon at the corner of Southfield and Beverly Roads. She suffered four fractured ribs.
Four children suffered minor injuries and were treated at the hospital.

Mrs. Day was a passenger in a car driven by her husband, George Otto Day, 50, who was heading north on Southfield. The children were in a car driven by Mrs. Kathleen Barone, 32020 Sheridan, Beverly Hills. Mrs. Barone was driving east on Beverly road when the accident occurred.

Student to Give Piano Recital

SOUTHFIELD—Brian Kish, a 16-year-old junior at Southfield High School, will give a private piano recital at 7 p.m. Saturday at the Grinnell Brothers auditorium in Birmingham.
Kish, who has studied piano for only five years, is being taught by Stanislaw Degerzki, musical director at Shrine of the Little Flower.
THE YOUNG pianist's program includes works by Bach, Schubert, Chopin, Liszt, Debussy, Paderewski and DeFalla. His most recent recitals have been before the Police Chamber of Commerce in Detroit and St. Mary's College of Orchard Lake.
He resides at 28031 Red Leaf Lane, Southfield, with his parents.

Ice Skating Coach From Southfield Dies in Air Crash

SOUTHFIELD—C. William Swallender, 18204 Westland, was one of 73 persons who met death last week when a Boeing Sabena jetliner crashed in Belgium near the Brussels Airport.
Swallender, 52, was a U. S. figure ice skating coach. Eighteen members of the team were also killed.
Swallender and his 16-year-old ice skating student, Douglas Ramsey of Detroit, were not scheduled to be aboard the plane until a last

minute change altered plans.
ONLY THE top three winners in the American Senior Men's competition at Colorado Springs, Colo., were to compete in the world championships at Prague, Czechoslovakia. Ramsay came in fourth. When third-place winner Tom Brown of Los Angeles, Calif., was unable to go, Swallender and his student went instead.
Swallender's wife, Genevieve, had planned to fly with her husband to Europe, but remained home to handle his skating studio in Detroit. The couple has two sons, C. William Jr., 17 and Erik, 8.
General news deadline is 4:30 p.m. each Tuesday.

RARELY AVAILABLE



IN BLOOMFIELD VILLAGE

A 4 bedroom Colonial that is truly "better than new"—built in 1958 with all the advantages of new design and planning, and with the added qualities that owners of distinctive good taste can contribute.

There's a wide and gracious foyer, a charming living room and a handsomely paneled family room, a separate dining room, deluxe kitchen with plenty of breakfast space, and a first floor laundry.

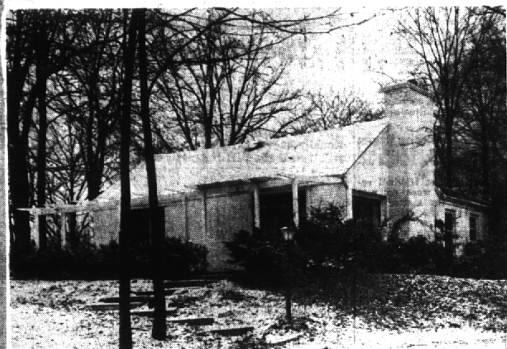
Exquisite decor and top quality construction provide the very best in fine home ownership.

You'll want to see this distinguished home before you buy or build. We'll gladly arrange for an appointment.

GILLON REAL ESTATE

1025 E. Maple

MI 7-0500



In The Woods

Georgous site—458 ft. frontage with mean depth of 300 ft.—a country area with fine surrounding properties.

Approached by a circle drive and set high to catch a year-round scenic view is the sturdy, comfortable One floor brick home.

Living room with massive fireplace.

Dining area.

Large Kitchen.

3 Bedrooms, 1 1/2 Baths.

Porch on one side.

Leaf-bowered terrace on other.

New roof.

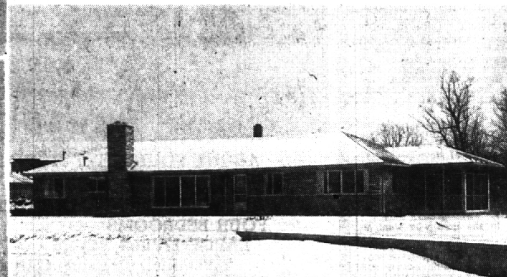
New copper piping.

New paint 1960.

Thermopane windows.

LOOK AT THE PRICE!

\$27,500.



On The Lake

Yes—that's the lake in the foreground of the picture. SUMMER'S NOT SO FAR AWAY AND THEN YOU'LL WISH YOU WERE HERE.

Large Living-Dining room with fireplace.

3 good-sized Bedrooms.

4th Bedroom or Library.

2 full Baths.

Kitchen with built-in oven, range, dishwasher

Marble sill, Birch trim.

Carpeting.

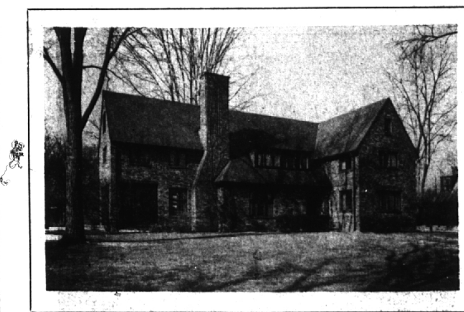
Pump from lake to water lawn.

SEE FOR YOURSELF.

CALL US.

SNYDER KINNEY & BENNETT
INC.
Realtors
MI 4-7000

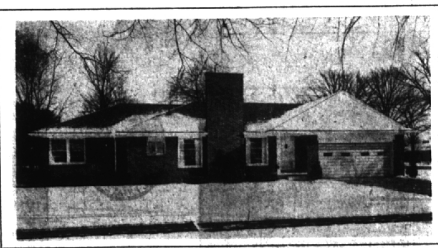
239 So. Woodward



Overlooking Quarton Lake, a happy home for the growing family. The grounds are absolutely beautiful on one of Birmingham's prize streets.

You are greeted in a spacious entrance hall leading to 5 bedrooms, 3 baths. The well-maintained home has 2 lavs, heated garage, big living and dining rooms. Tacked-down carpeting, recreation room, two stairways, a screened porch and a flagstone patio.

A real buy in the right location for either Quarton or Holy Name. \$36,750.



Easy to reach from the commuter station, from the junior high and grade schools, even the stores. But hard to leave once you see the sparkling interior. There's not a scratch in the 3 bedrooms, the big tiled bath, living room with a fireplace, and first floor lav. In the basement is another lav. The party room is really exceptional: tiled floor, bar, sink, and refrigerator . . . as nice as the rest of the house.

Carpets and draperies are just a portion of the features that make this brick ranch a wise buy at \$31,500.



Last week the interior of the handsome home pictured above was freshly decorated. The exterior of this 1939 Colonial is also newly painted.

All 4 bedrooms are large! Two baths upstairs plus first floor lavatory. Both living room and recreation room have fireplaces. Screened porch. Nice carpeting in the library, living room, dining room, hall, stairs, and two of the bedrooms.

For \$39,900, nothing to do but move in and enroll your children at Quarton School.

Robert F. Watt, Associate Broker

Weir, Manuel & Snyder, Inc.

Realtors

Birmingham, Michigan
Jordan 6-2323

298 South Woodward
Midwest 4-6300