

**Ralph of Fifth Ave.**  
Proudly announces a new addition to our staff  
"Miss Jaquie Senio" Specialist in Hair Styling and Coloring  
Shampoo and Wave \$3.50  
580 N. Woodward Birmingham, Mich. MI 4-9591

**PEOPLE'S COLUMN**  
**Pleads for Attention To Civilian Defense**

To the Editor:  
Through the years I've had many temptations to write a letter to the editor, and I've always subdued them. But now I feel I must speak out.  
Is civil defense a lost cause in our area? In our state? In our country?  
Oh, I don't mean plane watching, the Air Force and ground crew care for that—or wearing Chaps or Dior designed uniforms—or even the auxiliary police and fire groups who take drill training and Red Cross first aid.  
I mean the plain, down-to-earth civilian defense that asks: "If there is a disaster—tornado, flood, fire or THE BOMB, what will you do? What can you do?"  
Ask your friends and neighbors the question, and it's usually answered: "Oh, I'll take my chances, and hope it's fast—they will be no survival."  
That's nonsense! There will be survival—and it may be yours—until there your real problem begins.  
How will you survive, where will you turn for food, shelter, clothing and looking family and friends?  
It can be solved and is being locally solved by a group of dedicated men and women who want the answers—now—while there is still time.  
I've been attending a set of four class days on civil defense (my fourth set of classes in this area). I've watched the people come to

the first day's class, tongue in cheek, because a friend didn't want to come along.  
As that first day passed their expressions changed to curiosity, to real interest and some fright, and then to a look of resolution. I've gone through it, I know they were thinking: "Just how can we make our friends realize the necessity to learn?"  
It's amazing what we've learned—now if we survive (and God willing—we will), there is hope! These groups know that the area administrations in the county are and are deeply grateful for that support.  
With such continued encouragement these splendid classes can be the nucleus of a well trained defense force when the larger public awakens to the need.  
Right now it is almost entirely voluntary, but it should be a branch of the services—and soon!  
If ever we needed to be prepared for emergencies—fire, flood, tornado or THE BOMB—it is in the weeks and months ahead. How can people shut their eyes to the danger? Can you help? Please?  
Sincerely,  
(MRS.) MARY DUNCAN LACY  
Bloomfield Hills

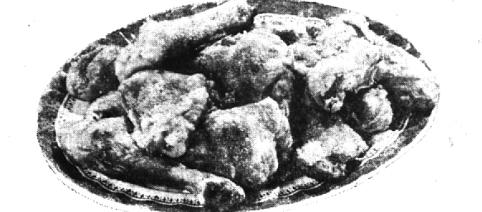
**Plant Expansion Will Add to Power Supply**

Southeastern Michigan's electric power supply will be further strengthened by a soon-to-be-completed expansion of Detroit Edison's St. Clair power plant.  
The expansion project, started in 1950, included the installation of two additional turbine-generators with a combined capability of 600,000 kilowatts. This nearly doubles the capability of the original plant.  
The start-up in April, 1950 of the first of the two new units brought the total capability at St. Clair to 980,000 kilowatts, qualifying the plant as Michigan's most powerful electric generating facility.  
With the completion of the second unit, the St. Clair power plant will be capable of producing 1,314,000 kilowatts.  
GROUND-BREAKING on the original plant project—located on the St. Clair River, midway between the communities of St. Clair and Marine City—took place in December of 1950. A four-unit facility was completed and in operation by October, 1954. Less than two years later work was started on the two additional units.  
In preparation for the addition, some 3,000 steel casings were driven down to hardpan and filled with concrete to support foundations for the new buildings.  
In the building of substructures, superstructures and turbine bases, more than 52,000 cubic yards of concrete, 2,200 tons of reinforcing steel and 8,000 tons of structural steel were required.  
AN ADDITIONAL 2,500 cubic yards of concrete went into the two 425-foot-high stacks. These reinforced-concrete structures, which

rise from ground level, taper from a diameter of 38 feet at the base to less than 20 feet at the top and tower 175 feet above the stacks of the older section of the plant.  
Each of the two new boilers, which are as high as 21-story office buildings, is capable of producing 2 million pounds of steam an hour to drive turbine-generators numbered five and six.  
Boiler number five uses a cyclone-type furnace in which crushed coal is burned without being pulverized. The sixth boiler is similar to the boilers used with the first four units and will use pulverized coal.  
THE ST. CLAIR plant expansion project, when finished will have required a total of nearly 4 million manhours for field construction alone, also had included extension of the coal-handling system to provide for increased fuel needs. When all six generating units are in operation the plant will consume some 11,000 tons of coal a day.  
St. Clair unit number six, now being assembled, will be the 14th largest turbine-generator added to

the system since 1947, when the company launched its long-range plant expansion program.  
The additional power furnished by the new generator will go into a "pool" fed by all six plants.  
These include Trenton Channel and River Rouge in the downriver area; Delray and Conners Creek in the metropolitan Detroit area; and Marysville which, like the St. Clair plant, is located on the St. Clair river.  
COMBINED, the six plants now have a generating capability of 3,750,000 kilowatts—about 5 million horsepower.  
This electrical energy pool, which will be increased to 4,075,000 kilowatts with the completion of the sixth St. Clair unit, can be drawn upon from anywhere in the southeastern Michigan territory served by the company.  
Also, through extensive interconnections, it can supply emergency power requirements to adjacent Michigan areas as well as to the Ontario-Hydro electrical system of Canada.

**Paul Henry's**  
Escorted Jet Tour  
**HAWAII**  
Special Low Rate  
LEAVE \$697 RIGHT FROM DETROIT  
15 GLORIOUS DAYS  
Enjoy this fascinating 6th annual tour with genial companions.  
Includes I.T. Air • Beautiful New Hotel at Waikiki • Excellent Sight-seeing Trips • Dinner at Royal Hawaiian Hotel.  
• Many other features.  
PHONE NOW!  
WO 1-7075 234 STATE



**PARDON OUR APPEARANCE.....**  
**....BUT DON'T MISS THE SAVINGS!!!**  
**REMODELING SALE!**  
Continuing Through March 12th  
We Need Space!  
Prices Slashed On All  
• Refrigerators • Ranges  
• TV • Washers • Dryers  
Hi-Fi  
WESTINGHOUSE CUSTOM IMPERIAL 8 PROGRAM LAUNDROMAT \$224.95  
WESTINGHOUSE CUSTOM IMPERIAL 8 PROGRAM DRYER \$199.95  
1. Handy Weighing Door  
2. Suds 'N' Water Saver  
3. Self Cleaning Drum  
4. Big 10-Lb. Capacity  
**OTHER REMODELING SALE SPECIALS**  
Manuf. Suggested List Price NOW  
Stereo Hi-Fi with AM & FM Radio \$450.00 \$299.95  
Deluxe Double Oven Range With Roast Guard \$579.95 \$375.00  
13 Cu. Ft. Two-Door Automatic Defrost Refrigerator \$369.95 \$288.00  
19" Portable TV \$209.95 \$154.95  
23" Console TV \$319.95 \$215.00  
**Hawthorne Electrical Co.**  
Birmingham's Oldest and Most Complete Electrical Store  
162 N. WOODWARD BIRMINGHAM MIDWEST 4-2200

**Roasting Chickens**  
Govt. Insp. Grade 'A' Fresh, Oven Ready 3-4-lb. Avg. Wt. **39¢ lb.**

Kraft's — with coupon in this ad  
**Miracle Whip**  
SAVE 20c Or Jar **39¢**

Assorted Flavors — with coupon in this ad  
**Royal Gelatin**  
6 Reg. Pkgs. **29¢**

Mushroom, Veg. Beef or Chicken Noodle  
**Campbells Soups**  
6 Toll Cans **1.00**

Good Taste — with coupon in this ad  
**Saltines**  
1-lb. Pkg. **19¢**

**WRIGLEYS**  
This Coupon Good Only at Wrigleys Through Saturday, February 23.  
Kraft's **MIRACLE WHIP** Or Jar **39¢**  
Limit One per Customer. Coupon Has No Cash Value. Give to Cashier Before She Checks Your Order.

**WRIGLEYS**  
This Coupon Good Only at Wrigleys Through Saturday, February 23.  
Royal **GELATIN** 6 Reg. Pkgs. **29¢**  
Limit Six per Customer. Coupon Has No Cash Value. Give to Cashier Before She Checks Your Order.

Govt. Inspected, Grade A, Completely Cleaned  
**FRYERS**  
WHOLE **31¢ Lb.**  
Cut-Up ..... **35¢**  
Broilers Fresh, Split **37¢**

Swift's Premium, Hygrade's or Imperial  
**Smoked Hams**  
SHANK PORTION **39¢ lb.**  
Butt Portion Smoked Ham 49¢ lb.  
Whole Smoked Hams 14-18-lb. Avg. Wt. 49¢ lb.  
Center Cut Ham Slices 89¢ lb.

Prices effective through Saturday, February 25. We reserve the right to limit quantities.  
Fancy, Golden Ripe **Bananas** **10¢ lb.**  
U. S. No. 1 Michigan **Potatoes** **10¢ lb.** With Coupon **29¢**  
**WRIGLEY**  
This Coupon Good Only at Wrigleys Through Saturday, February 23.  
U.S. No. 1 Mich. **Potatoes** 10 Lb. Bgg **29¢**  
Limit One per Customer. Coupon Has No Cash Value. Give to Cashier Before She Checks Your Order.

SAVE 21c **Cheese Slices** 2 8-oz. Pkgs. **49¢**  
SAVE 33c **Grapefruit Juice** 4 46-oz. Cans **1.00**  
SAVE 4c **Evaporated Milk** 6 Tall Cans **79¢**

Frozen Fish Cake & Spaghetti  
**Red L Dinners**  
10-oz. Pkg. **29¢**

**WRIGLEY**  
This Coupon Good Only at Wrigleys Through Saturday, February 23.  
Good Taste **SALTINES** 1-lb. Pkg. **19¢**  
Limit One per Customer. Coupon Has No Cash Value. Give to Cashier Before She Checks Your Order.

**WRIGLEY**  
**50 EXTRA Gold Bell Stamps**  
With This Coupon—With Purchase of \$5.00 or MORE Except Beer, Wine or Tobacco Products. Coupon redeemable only at Wrigleys. This coupon has no cash value. Limit one per customer. Coupon Good Thru Saturday, Feb. 23.

GET FINER GIFTS FASTER WITH GOLD BELL GIFT STAMPS