

'round the towns news The Birmingham Eccentric

BIRMINGHAM

MICHIGAN

BEVERLY HILLS • BINGHAM FARMS • FRANKLIN • WOOD CREEK • LATHRUP • BLOOMFIELD TOWNSHIP • WEST BLOOMFIELD TOWNSHIP • NORTH ADAMS • SOUTHFIELD TOWNSHIP • SOUTHFIELD CITY

Sewer Bids In Lathrup Due Feb. 27

LATHRUP—Pressured by court-ordered deadlines, the city council continues its march toward construction of court-ordered sewers. In action taken Monday night, council set a date to accept bids and award the contract for \$20,000 sanitary bond issue.

Council also directed City Attorney Everett Hayes and City Clerk Frank Derby to take steps on the sanitary sewer construction contract and reflectively deferred action on setting an election date for the storm water bond issue.

ON THE sanitary construction contract, Hayes and Derby were asked to bring in a contract with Giannetti Construction Co. or a report on conditions necessary for execution.

FURTHER action on the contract and election date will be considered Monday night at a continuation of the Feb. 6 meeting. Charles D. Kelley reported he was ready to petition the Oakland County Drain Commission to extend the Spring Branch drain district.

Beverly to Sponsor Basketball Clinic

BEVERLY HILLS—A program of basketball instruction for fifth and sixth grade boys will be offered at three elementary schools in the village beginning this Saturday.

BEVERLY HILLS—Did you know that Beverly Hills is a city of 100 homes? Beverly Hills is a city of 100 homes, each with its own unique character and charm.



Dr. Ira Altschuler enjoys a continental atmosphere in the recreation room of his home, 18236 Midway. The sidewalk cafe with a French accent was designed and executed by the artist in the family, his daughter Ilona.

Understanding Is Vital, Psychiatrist Emphasizes

By IRMA N. DAVIS Staff Writer SOUTHFIELD—Dr. Ira Altschuler, prominent psychiatrist and member of the Southfield Board of Education, believes that "every citizen is a member of the board of directors of the United States."

Subdivision Proposed In Beverly

BEVERLY HILLS — The proposed new 123-home Beech Grove subdivision, presented Monday night to the council, is under study now by village planners.

8 Men Take Out Council Petitions In Beverly Hills

BEVERLY HILLS — Eight petitions were taken out before the council race in the village.

Beverly Finalizes Sewer Project



WEST BLOOMFIELD—Mrs. G. A. Cohen (left) and Mrs. Theodore Diehm (right) continue a discussion on culture with Wayne State University Professor Donald Hope. An instructor in contemporary English and American literature, Hope addressed the West Bloomfield League of Women Voters last week on the topic of "Culture in the Metropolitan Area."

Council Ok's Sale Of Bonds

BEVERLY HILLS — When a fire hall full of residents left a special assessment hearing on sanitary sewers Monday night, they voted to authorize the sale of \$555,000 in bonds to cover the 20 districts where sewer work will be done.

Converse About Culture

WEST BLOOMFIELD—Mrs. G. A. Cohen (left) and Mrs. Theodore Diehm (right) continue a discussion on culture with Wayne State University Professor Donald Hope.

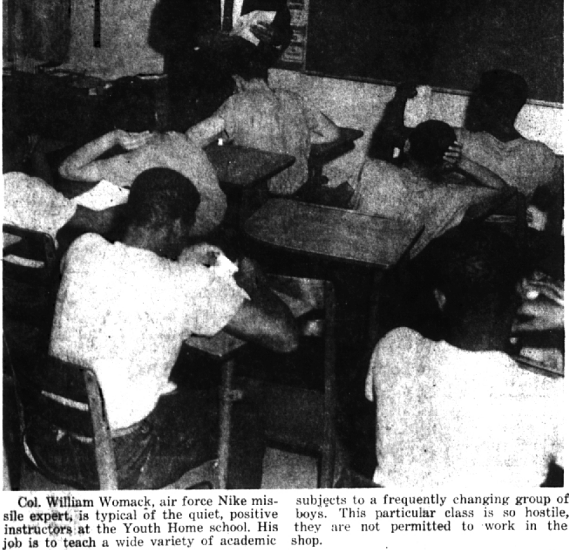
Harold Heralds Wife; S'field Committee Seeks to Better Public Relations

SOUTHFIELD — Representatives of the school board and school administration met with other members of a newly formed public relations committee recently. The goal of the group is to seek improved communication between the public and the schools.

The Tackles Task of Soothing, Healing Brutal Delinquency in Its Law West State

By NITA HARD Franklin Correspondent FRANKLIN — Dr. D. Lloyd McKinley spends most of his time in jail... and loves it! Far from it, it's the very best place for a man of his enormous talents — administrator, teacher, psychologist, social worker, ex-patrolman, church lay-leader and piano player.

with soft blue accents. There are windows, but very high ones, and there is an unexpected informality about the procedure. Yet, a constant alertness charges the atmosphere. For each room holds in delicate check the most hostile human emotions which sometimes lash out with less proportion than the bat of an eyelash.



Col. William Womack, air force Nike missile expert, is typical of the quiet, positive instructors at the Youth Home school. His job is to teach a wide variety of academic subjects to a frequently changing group of boys. This particular class is so hostile, they are not permitted to work in the shop.