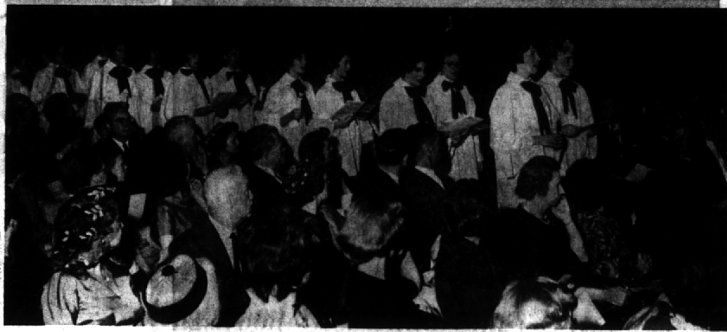


BITS OF BIRMINGHAM

Tuesday was picture night at the Birmingham City Commission meeting. Commissioner Carl F. Ingraham brought snapshots of a grandson to show off and Ken Weaver of The Enquirer displayed photos of his daughter and son. A striking resemblance existed in pose—head, with thoughtful expression, resting on hand. Weaver proudly held up an eight-by-ten framed picture of his 23-month-old daughter, which brought forth the comment: "He just happened to have it in his billfold."

A copy of the People's Column letter which appears on Page 2-B of this week's Eccentric was sent by its author to the Birmingham City Commission. It was included with Tuesday night's meeting agenda. "It's nice to see our citizens so interested in these matters," said Mayor Florence H. Willett. "I'm happy to see someone else interested in the subject," commented Commissioner Robert Page. "That makes two of you," responded Commissioner William E. Roberts. Page has been the leader of civil defense action in Birmingham.

Among the letters to Santa Claus received too late for publication in last week's paper was this one from Sarah (Boo Boo) Lapp, 3255 Pebble Lane, Birmingham. "Please bring me a farm set, because I like them. Will you bring me a book, a mud pie book and a tea set, because I would like an angel made out of glass like I saw in the store. I am four. I also want a Christmas tree with a star on top. My sister, Elizabeth, wants a rock mineral kit and Cynthia is two and wants a tree and a piano. Thank you, Santa. Your friend, Boo Boo." It was forwarded to the North Pole for delivery before Christmas Eve.



Kingswood Glee Club Sings Out

Members of the Kingswood School Cranbrook Junior and Senior Glee Club fill the school's assembly hall with music to open their Christmas musical program. An audience

of some 350 persons packed the hall last Sunday night for the annual event.

The Birmingham Eccentric
Published weekly except semi-weekly for eight issues during last week in November, first five weeks in December, fourth week in May, and first week in July in The Eccentric Building, 1224 Bowers St., by the Birmingham Eccentric, Inc., Telephone Midwest 4-1190. Address all mail (subscriptions, change of address, terms 1973) to 1224 Bowers St., Birmingham, Mich.
Paul N. Averill, President and Publisher
Henry M. Moran, Jr., Vice-President and Associate Publisher
Second-class postage paid at Birmingham, Mich.
SUBSCRIPTION RATES (in Oakland County)
One Year \$4.00
Six Months \$2.00
(Outside Oakland County)



New Building for B'ham

This 23,840 square foot building, being Office of Burton Abstract and Title Co. erected at 1550 North Woodward Avenue, H. P. Campbell Co., Inc. are the building contractors.

PEOPLE'S COLUMN

B'field Hills Group Protests Prayer Ban

To the Editor:

A group of more than 50 citizens of Bloomfield Hills School District, sincerely interested in preserving their religious liberty, went before the Bloomfield Hills Board of Education meeting on Dec. 19 to protest the board's recently, hastily made, decision to ban the use of any prayer in the public schools. The group contends that this decision, coming after the complaint of one mother in the district, was a great mistake, and even constitutes a danger to our religious freedom, the right of the teacher to open the class day with a prayer if he or she chooses and the need of the child, whatever his religion, to acknowledge a Supreme Being. Although the Bloomfield Hills Board of Education was unwilling to give any straight answers to the group's questions and even intimated that the group was "out on a witch hunt", the group did ascertain that the ban on prayer was imposed after the single complaint by agreement of one or two members over the telephone.

THIS GROUP of sincere, concerned citizens contends that: 1. Any ban on prayers in the public schools perverts the meaning of freedom of religion to mean, instead, denial of religion. 2. This ban protects the rights of an infinitely small minority and penalizes the great majority who do not object to prayer as a part of the opening exercises of the school day or as an invocation. 3. This same case was considered in the state of New York recently and it was decided in favor of non-intervention with a teacher's right to have prayer in his or her class. This decision was appealed to the United States Supreme Court which has not as yet had time to act upon it. Why does the Bloomfield Hills Board of Education change the satisfactory

status quo of policy on this subject and refuse to wait to hear the decision of the U. S. Supreme Court?

4. Finally, a daily prayer to open the day and student assemblies does not constitute teaching religion in the schools. Clearly, this agrees with the policy of the separation of the church and the public schools, with which we fully agree. An invocation has been a tradition in our country for its entire history.

WE FERVENTLY hope that the



PFC. W. A. RISK
Warren A. Risk Completes Training At Camp Lejeune

CAMP LEJEUNE, N.C.—Marine Pfc. Warren A. Risk, son of Mr. and Mrs. Warren A. Risk, 18640 Warwick, Beverly Hills, completed intensive combat training Nov. 9 at the Infantry Training Regiment, Camp Lejeune, N.C.



GREETINGS & GIFTS are brought to you from Friendly Neighbors & Civic & Social Welfare Leaders through

WELCOME WAGON On the occasion of Change of residence Arrivals of Newcomers to Birmingham MRS. H. WALES PRICE Midwest 4-0516 (No cost or obligation)

The Elegant Look in Women's Shoes

For Your Enchanted New Year's Eve

Gold Kid Opera Pump

High and Mid-Heels
Sizes 4 1/2 to 10
Widths AAA to B

Bags To Match \$13.95

Charge Accounts Invited

The Peacock Room

elegant footwear
183 N. Woodward (Opposite Demery's) MI 4-9762
Open Daily 9:30-6 P.M. - Fri. 9:30-9 P.M.

JULIE IN THE FISHER BLDG.

SALE

Julie's Second Floor Splendid Reductions

1/4 - 1/3 OFF

COATS - SUITS - DRESSES

Couture Selections as well as moderately priced.

HURRY! HURRY!

No Returns - All Sales Final

VIRGINIA DEVON'S SHIRTS

Stewart-Glenn

1680 South Telegraph Road • Federal 2-8348

WAREHOUSE REMOVAL SALE

FURTHER GREAT REDUCTIONS!

Living Room, Bedroom, Dining Room, Tables, etc.
Stearns & Foster Bedding—Factory Clearance

Close-out sale of famous Stearns & Foster first quality mattresses and box springs—including Tufted, Tuftless, Quilt top, Hotel Type, Extra Firm and Orthopedic styles. Vals. From \$39 to \$79. Now \$29 to \$68

DIVANS—Upholstered in Decorator Covers; 6 legs, Reg. 89.00 \$58.00 each

AND MANY MORE VALUES!

Open Thurs., Fri., Sat. 9 P.M. - Sat. 'til 5:30 (Closed Sun., Mon., Jan. 1st, Tues., Jan. 2nd)

Stewart-Glenn

1680 South Telegraph Road • Federal 2-8348
Just South of Orchard Lake Road—Free Parking Front of Store

Closed Tuesday, Jan. 2nd
For Inventory
Open Wednesday, Jan. 3

Dec. 28, 1961 THE BIRMINGHAM (MICH.) ECCENTRIC 3-A

Bachelor's degree graduates of annually, the research division of Michigan colleges and universities the Michigan Education Association received an average beginning tuition reported. Surveyed by the teacher salary in September, 1961, MEA were 19 teacher education which ranged from \$4,400 to \$8,000 institutions in Michigan.

4% INTEREST ON SAVINGS?

See Page 1, Section B

ELY

city on the patrol...
We are sprucing up our house to welcome all the marvelous Spring clothes which are arriving daily from all parts of the globe.

Do come to our CLEAN SWEEP CLEARANCE

of one of a kind things. The first ones to arrive will find clothing treasures at infatigable prices.

- BLouses... Our own very interesting prints and basics. 1/2 off.
- SWEATERINGS... Some bulky, fur blends, shetlands. 1/2 off.
- DRESSES... A miscellaneous collection including corduroy shirts. 1/2 off.
- SEPARATES... Our own best separates. Skirts, asst. tops, jackets and some pants in tweed and velver. 1/2 off.
- CAPEZIOS... Lucky sizes sale. All sorts of interesting one of a size Capezios in heels, flats, leathers, fabrics. Flats. \$6.00 Heels. \$9.00
- COATS... Some tweeds, corduroy and cotton suede. Some high fashion Junior coats. 1/2 off.
- SHIRTS... Flax tweed skirts, some cotton suede. 1/2 off.

A GRAB BAG OF ACCESSORIES 1/2 off.

HURRY... HURRY... HURRY

The Village Store

BIRMINGHAM 235 Pierce St.
GROSSE POINTE 88 Crocker
SAGINAW 105 S. Jefferson
ANN ARBOR 1265 S. University

MANUFACTURER
PO. BOX 1070 FIFTH STREET.