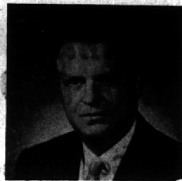




LESTER R. DOWNIE



RICHARD C. GERSTENBERG

Building Fund Names Five Co-Chairmen

Five Birmingham area residents have been named co-chairmen of the Major Gifts, Group II Division of the Metropolitan Detroit Building Fund.

They are Richard Gerstenberg, 55 Cabot, Bloomfield Hills, vice president of General Motors; L. Irving Woolson, 715 Glengary, Birmingham, vice president of Chrysler Corp.; Lester R. Downie, 19421 Sunnybrook Blvd., Lathrup Village, executive vice president of Kelsey-Hayes Co.; Lee A. Iacocca, 5654 Tall Oaks, Birmingham, vice president of Ford Motor Co.; and Gilbert F. Richards, 411 Goodhue, Bloomfield Hills, vice president of The Budd Co.

The Group II division of the MDBG will solicit funds for construction of hospital facilities and buildings for other cooperating agencies from over 1,000 small and medium business concerns, beginning in January. Major corporations have already made their contributions in the Group I drive which was completed earlier this year.

OVERALL GOAL of the two drives is to raise \$14,864,463 as the MDBG's share of the approximately \$36,000,000 cost of approved hospital projects during the next five years.



GILBERT F. RICHARDS



L. IRVING WOOLSON



LEE A. IACOCCA

LAST MINUTE TIDBITS

DON'T WORRY ABOUT THAT LITTLE GAP IN YOUR CHRISTMAS LIST. BE IT CHILD, FRIEND, UNCLE, OLD FRIEND, YOUNG FRIEND, OR AN ANIMAL, BRING THE GAP IN AND WE WILL BEND ALL OUR EFFORTS TOWARD FILLING IT FOR YOU—EVEN IF IT REQUIRES A BIT OF POSEY CLAY.

HERE ARE SOME OF THE POSSIBILITIES AND APPROXIMATE PRICES:

TINY TO SMALL ANIMALS IN WOOD, CHINA, POTTERY, STONE & LEAD—25c TO \$15.00.

VERY FINE BIRDS FROM \$5.50 A PAIR (WHITE QUAILS) TO \$29.95 A PAIR (DUCKS AND SAND PIPERS).

DAINTY CERAMIC COMPOTES OF FLOWERS OR FRUITS—\$1.95 TO \$13.50.

CHRISTMAS STOCKINGS FOR DOGS & CATS.

PAPERWHITE NARCISSUS—\$1.00 a doz.

HYBRID AMARYLLIS—\$4.60, (PLANTED, \$6.00).

BIRD FEEDER FROM \$1.30 (OR EVEN 59c) TO \$9.00 or \$10.00.

WELL, PERHAPS IT IS A BIT SILLY TO TRY AND LIST A FEW ITEMS BY NAME, SO WE WILL SUGGEST THE TIDBITS IN ANOTHER WAY.

FOR INSTANCE:—

DOZENS OF THINGS FOR GARDENERS:—Gloves, shears, knee guards, tools, soil testing kits, pruning saws, sprinklers, hose accessories, root feeder, dusters, etc.

FOR PETS:—Christmas stockings, toys, whistles, yummies, collars, and leashes, chew-sticks, name tags.

FOR OUTDOOR COOKING:—Grills, fire starters, hibachis, long, salt & pepper mills, electric fire exciter, ice buckets, cook books?—

HOME EQUIPMENT:—Log carriers, log holders, place mats, peacans, Jimbo peanuts, Italian pitchers: wood, iron pottery & ceramic flower containers and more.

INDOOR FLOWER ACTIVITIES:—electric greenhouse, potting soil, vases & pots, flower frogs, posey clay, watering cans, sprays, sprayers.

DECORATIONS:—Small holly trees, Christmas decorations, fruits, FRESH HOLLY and other greens, snowflakes, candle decorations, stylized trimmings.

CANDLES:—Many shapes, sizes—colors, English Fairy lights, Jewel lights, apple candle lights, candle holders, hurricane lamps (outdoors), Dove candles.

If you are desperate, come in and take a quick look.

If you are not desperate, come in and take your time because there are quite a few beautiful things to be seen.

NOTE: OUR STORE WILL BE CLOSED ON TUESDAY, DECEMBER 26th.

Again we wish you a Happy and very Merry Christmas.

McCLELLAN-BALL CO.

EVERYTHING FOR THE YARD AND GARDEN Phone MI 4-4133 850 S. Woodward, Birmingham, Michigan

Romney's Prestige Grows With Eisenhower Visit

For the past few years the name George Romney has gained considerable prominence in the automotive field.

Now it's becoming even more prominent in the political field. Today, Romney is being labeled the Republican Party's "most likely" candidate for governor next year.

And he is gaining in stature on the national scene. One press association reporter, speaking in Detroit last week, said Romney is drawing increasing national attention as a possible darkhorse presidential candidate in 1964.

BUT THE biggest feather to date in the Bloomfield Hills resident's cap is his escorting former President Eisenhower to the Constitutional Convention last week.

Romney, an Oakland County delegate and a vice president of Con-Con, flew to Pennsylvania to meet Gen. Eisenhower Wednesday. On their arrival at Capital City Airport in Lansing they were met by several top Republican officials

who served under Eisenhower when he was President, Gov. Swainson and other state Democratic leaders. Romney introduced Gen. Eisenhower at Convention Hall in East Lansing. Television cameras focused on them for more than half an hour. Eisenhower gave a brief talk, then answered questions.

ROMNEY SPENT the entire day with the former President, except for a brief talk at Michigan State University. They joined other Con-Con vice

presidents and Con-Con President Stephen S. Nibbet for lunch at the home of MSU President John A. Hannah.

Gen. Eisenhower was asked his opinion of Romney. "Wonderful, just wonderful," he declared.

"Would Romney make a good governor?" he was asked later. Grinning, the former President said, thoughtfully, "I don't know about things like that, but he's an awfully good man."

Romney, of course, has insisted since that his main goal is to finish up the work of the convention.

AS ONE delegate remarked about the Eisenhower appearance, "It was a tremendous boost for public acceptance of the results of this convention. And, of course, it

Dec. 21, 1961 THE BIRMINGHAM (MICH.) ECCENTRIC 7-C

Residents Prepare Papers for Confab

Three Birmingham men prepared papers for presentation at the winter meeting of the American Society of Agricultural Engineers in Chicago, Dec. 18-19. All associated with Ford Motor Co., they are H.

A. Lehmann, supervisor of the hydraulic section; C. B. Riehey, chief research engineer of the Tractor and Implement Division; and R. W. Wilson, of the soil preparation section at the Tractor and Implement Division. R. L. Irwin of Ford Motor Co. presided at one of the sessions.

Nearly 2,000 agricultural engineers from throughout the United States and Canada, and from many foreign countries, attended the meeting, which for the first time included an Agricultural Engineering Exposition. The meeting covered four major divisions—power and machinery, electric power and process, farm structures, and soil and water conservation.

With the Eisenhower visit over, state Democrats are now looking forward to former President Truman's Con-Con appearance next month.



"SUPER-RIGHT" QUALITY—NONE FINER—FANCY, YOUNG

Christmas

A SIZE TURKEY FOR EVERY FAMILY



20 to 24 Pound Sizes

10 to 15 Pound Sizes

27^c LB.

33^c LB.

16 TO 19 POUND SIZES LB. 29^c

6 TO 9 POUND SIZES LB. 37^c



YOUR GUARANTEE OF QUALITY

This Week's STORE HOURS All A&P Super Markets Open Thur., Fri. & Sat. 9 A.M. TO 9 P.M.

Ready to Cook CLEANED

SHRIMP

1½-LB. BAG 2.29

3-LB. BAG 4.49

Perfect Partner for Ham or Turkey OCEAN SPRAY—Whole or Jellyed

Cranberry Sauce 2 16-OZ. CANS 39c

Holiday Poultry Buys

4-POUND SIZE Roasting Chickens LB. 39c

4 TO 6-POUND SIZE Oven-Ready Ducks LB. 45c

5 TO 10-POUND SIZE Oven-Ready Geese LB. 69c

6 TO 7-POUND SIZE Fancy Capons . . . LB. 59c

ARMOUR'S STAR—8 TO 11-LB. SIZES

Stuffed Turkeys . . . LB. 49c

Pork Sausage "SUPER-RIGHT" 3 1-LB. ROLLS 1.00

"Super-Right" Quality, Skinless

Semi-Boneless FULLY COOKED

HAMS

WHOLE OR HALF 67^c 10 TO 12 POUND SIZES

No Center Slices Removed



SWEET, JUICY, CALIFORNIA NAVEL

Oranges

 88-SIZE DOZEN 69^c

HOT HOUSE

Tomatoes LB. 39c

Delicious Apples WASHINGTON STATE MD OR GOLDEN 2 LBS. 49c

Brussels Sprouts QT. BOX 29c

LOUISIANA, PUERTO RICAN VARIETY

Sweet Yams LB. 10c

Fresh Mushrooms DELICIOUS IN DRESSINGS LB. 49c

Green Onions MILD FLAVORED 3 BUNCHES 29c

WISCONSIN CHEESE

Sharp Cheddar LB. 69c

Large Eggs

SUNNYBROOK GRADE "A" 49c DOZ.

CRESTMONT—Pistachio or Peppermint Candy

Ice Cream HALF GAL. CARTON 79c

SAVE AT A&P ON Christmas Candy

CRESTMONT ASSORTED DARK AND MILK CHOCOLATES . . . 4 LB. BOX 1.99

WARWICK ASSORTED DARK AND MILK CHOCOLATES . . . 5 LB. BOX 2.99

Cut Rock Candy WORTHMORE 11-OZ. BAG 29c

Spice Drops WORTHMORE RED OR GREEN 1¼-LB. BAG 29c

Royal Lusters WORTHMORE 22-OZ. BAG 49c

5c OFF LABEL—REG. OR DRIP Yuban Coffee 1-LB. CAN 73c

IMPERIAL Margarine 1-LB. CTN. 42c

A&P BRAND—OUR FINEST QUALITY

Green Peas 5 16-OZ. CANS 99c

EARLY CALIFORNIA, SELECT Ripe Olives 4 9-OZ. CANS 79c

OUR FINEST QUALITY A&P Pumpkin 2 29-OZ. CANS 29c

ALUMINUM FOIL Wonderfoil 2 25-FT. ROLLS 49c

A&P BRAND—OUR FINEST QUALITY

Kernel Corn 7 16-OZ. CANS 1.00

Mandarin Oranges . . . 2 11-OZ. CANS 39c

Vlasic Sweet Snax QT. 35c

Milani's 1890 Dressing 2 4-OZ. BTL. 49c

Alcoa Aluminum Foil . . . 25-FT. ROLL 29c

Fresh Kosher Dills BOND'S 97. JAR 29c

10-X or Light or Dark Brown Jack Frost Sugar 2 1-LB. BOXES 29c

CANADA DRY Ginger Ale or Sparkling Water 2 28-OZ. BTL. 39c Plus Bottle Deposit

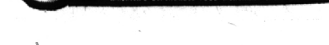
Baker's Chocolate Chips 6-OZ. PKG. 19c

Delhi Figs WHOLE OR BROKEN 5 #300 CANS 99c

Datley Candied Midgets 14-OZ. JAR 39c

All prices in this ad effective thru Saturday, Dec. 23rd in all Eastern Michigan A&P Super Markets

THE GREAT ATLANTIC & PACIFIC TEA COMPANY, INC.



AMERICA'S FAVORITE—JANE PARKER

FRUIT CAKES

3-POUND SIZE Light Cake 2.95

1½-LB. LIGHT CAKE 1.49

Dark Batter Cakes 1-LB. SIZE 89c 2-LB. SIZE 1.65