

Franklin Church Circles Schedule Yule Programs

FRANKLIN—A musical program, under the direction of Mrs. Donald B. Hogue, reviewing the Christmas story, and customs and traditions all over the world through the use of Christmas carols, will provide a relaxing afternoon Tuesday for women of the Franklin Community church.

Luncheon will be served at noon by members of the Rebekah Circle with Mrs. Roy Troutaud taking reservations. Mrs. D. F. Sifton will lead devotions.

MRS. JOHN HARMS, president of the Women's Society for Christian Service, extends an invitation to all the women of the church. Mrs. Paul Settle is in charge of arrangements for children in the nursery.

A work shop will be held that morning at 10 a.m. at the home of Mrs. John Holmes, 6800 Meadowlake Road.

HERE, MEMBERS of the Mary-Maria circle will wrap gifts for the ladies of the Pontiac State Hospital, before attending the WSCS luncheon. Mu mu style dresses have been made by circle members for distribution.

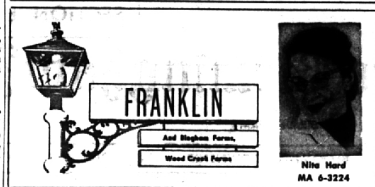
Esther Circle members will be

guets of Mrs. Douglas Day, chairman, for buffet supper on Dec. 14 at 7 p.m. Each member has a patient's name and there will be an ingathering of the personal gifts prepared.

Funds for Ping-Pong

LATHRUP—The donation of \$50 by Lathrup Women's Club to the recreation commission for purchase of a ping-pong table was accepted Monday night by council.

The table will be used at Lathrup School in the recreation commission's Thursday night program.



Christmas PTA Event Monday in Franklin

FRANKLIN—"A Child's Christmas Dream" with every Franklin school student participating will be the PTA program Monday in the school's multipurpose room.

Each class will share in the program, which is divided into two showings, kindergartners through third grades at 1:15 p.m. and fourth through sixth grades at 8 p.m.

Instrumental students have been practicing for weeks to bring the big sound of music for the event. Parents are urged to save Jan. 8 for a PTA meeting on "How You Can Help Johnny Read". George

Economus, elementary librarian for the Birmingham school district, and Mrs. Naomi Erdman, reading consultant for the primary grades will discuss motivating interest, the knowhow of parent assistance at all levels of reading and the Right book selection.

It's hard to believe—or is it—but people from Port Huron, Grand Rapids, Midland, Ann Arbor, Flint and Coldwater made the trek to Franklin last Friday to join the WSCS House Tour of seven Franklin homes.

Chairman Mrs. Edward Green—happily on cloud nine despite all the worry and arrangements—hasn't quite confirmed the exact number of visitors. Figures run from 1,200 to 1,600. Long lines lined up outside each of the distinctively different homes, plus the endless waves at the Franklin Community Church attest to the success of this singular venture.

In fact, one little lady was so impressed by the enthusiasm, and spirit of the occasion, she sidled up to Mrs. Green and asked "Would you ladies like to put this tour on again of OUR church?"

Franklin gals with luncheon guests pitched where needed, dropping all formality they grabbed dishes, towels and wiped mountains of china, brought a sea of cookies to feed the boards and assisted harried hostesses who never dreamed so many would come to see their homes.

And the paper bags, blees' me!—issued to visitors at the church not only saved rags as they were supposed to, but, somehow in stocking feet—visitors seemed very comfortable. Even the men and there were lots of them.

Franklin WNFCA Tea Next Monday

FRANKLIN—"The Custom of Christmas" will be the theme of the Christmas Tea held next Monday by the Franklin WNFCA.

Starting at 1 p.m. at the home of J. J. Becker, 2490 Middlebelt, the tea will also feature a telling of the Christmas story by Mrs. Donald Tracy and carols with piano accompaniment by Mrs. Donald Hogue.

MEMBERS HAVE been asked to bring and display handmade Christmas trimming items they will use in their own homes for the holidays.

WNFCA officers will preside as hostesses. They are Mrs. E. W. Cook, Mrs. R. C. Buchanan, Mrs. George B. C. Miller, Mrs. J. F. O'Brien, Mrs. W. L. Draper and Mrs. Robert Swift.

'Coming of Christ' Film Set Sunday

FRANKLIN—A showing of the special film "The Coming of Christ" will be held Sunday afternoon in the sanctuary of the Franklin Community Church to highlight the Advent season and preparation for Christmas.

Open to everyone interested and starting at 4 p.m., the short program will also include Christmas music.

THE FILM WAS originally presented by the United States Steel Co. as a special Christmas TV offering last year. Art masterpieces from all over the world have been collected on film to present a moving narration of the life of Christ.

St. Francis Guild To Hold Luncheon

BINGHAM FARMS—The St. Francis Cabrini Guild of Holy Name Church in Birmingham will hold its annual Christmas luncheon Dec. 13 at the home of Mrs. August Larsen on Bingham Road.

Guild officers, Mrs. William Christianson, Mrs. Mrs. Kent, Mrs. John Gormley and Mrs. James Haworth, will assist the hostess.

Members will have a grab-bag gift exchange and prepare two baskets of canned goods which will be distributed along with silver contributions.

Detroit Country Day Junior School Pupils Plan Yule Program

On Dec. 14, at 7:30 a.m. the junior school of Detroit Country Day School will present its annual Christmas program.

This year the performance will be two short plays. The kindergarten, first and second grades have chosen "The Night Before Christmas" as their title. Santa's elves, a Christmas tree composed of first graders, and a choral will carry out their theme.

The third through sixth grades will present "Christmas Everywhere". Scenes of Christmas as it is celebrated in Germany, Holland, Norway and Spain will be portrayed. They will also depict a scene showing the way in which Hanukkah is celebrated at this season. Bart Tenney, son of Mr. and Mrs. James Tenney of Wood will narrate the story as the play progresses.

The program will close with a tableau of the Nativity scene. Taking part in this will be Karen Popper, daughter of Mr. and Mrs. Peter Popper of Orchard Lake, and Warren Avis, son of Mrs. Packer Avis of Birmingham.

The three kings will include Michael Dornan, son of Mr. and Mrs. William Dornan of Franklin and Thomas Olson, son of Mr. and Mrs. Robert S. Olson of Birmingham.

'Look Back in Anger' To Be Presented At Farmington Barn

WEST BLOOMFIELD—"Look Back in Anger," will be presented at the Farmington Barn Theater, 12 Mile near Orchard Lake Road on Dec. 15, 16 and 17 at 8:30 p.m.

Appearing in the play will be Leonard and Norma Bradley, Howard Egan, Edith Fox and Howard Halstead. The five actors will present their play in the "yard."

The play is one that "aroused staid Longfellow in 1900 and gave the world the first of the angry young men," according to Bradley.

QUALITY SHOWS

PRIME LOCATION—Gorgeous high Sedan Lake site with magnificent trees and landscaping. Bloomfield Hills Schools.

CUSTOM BUILT—To mention just a few features—genuine cedar shakes on the exterior—lovely hardwood floors throughout—marble floors and counters in 1st floor Powder room—slate foyer—AND

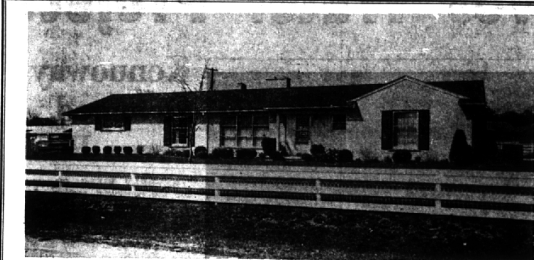
THROW AWAY YOUR SNOW SHOVEL THIS WINTER—the circle drive is radiant heated with seven zone switches for selective melting.

A SPECIAL CHARM—Makes you feel at home when you walk in—Colonial fireplace wall in living room—dado and wallpaper in family-sized Dining room—delightful breakfast room overlooks lower-level Family room with old-brick raised hearth, pegged floor and small bar. 4 Large Bedrooms off the upstairs center hall—2½ Baths plus the De Luxe Powder room.

CALL US AND SEE FOR YOURSELF—YOU'LL LOVE THIS.

SNYDER KINNEY & BENNETT INC.
Realtors

239 So. Woodward MI 4-7000



This Home Has Rare Charm

On a wide spreading lot in Wing Lake area and nicely set off with a sparkling white ranch fence, this charming modern ranch affords suburban living at its very best. There is a big living room with adjoining Dining all and a large family kitchen with breakfast space and a multitude of convenience cupboards. The kitchen itself is ultra modern in stainless steel with built in range, oven and refrigerator, up to date heating plant and complete air conditioning. Three pleasant bedrooms are served Nicely by two complete baths. Lake privileges. Immediate occupancy. Just reduced to \$34,500.

Walsh, James & Wasey Co.

Realtors Since 1918
42 Years of Continuous Service in Birmingham
431 S. Woodward Ave. Birmingham
Midwest 4-6500
Detroit, JO 4-6033

1 in 100

Are you hard to please? Most Realtors are. It's an occupational disease. But our staff left this home bubbling! It is that home-in-a-hundred that blends outstanding setting, delightful decor and a fine floor plan into a near-perfect whole. There is a spacious step-down living room, a full dining room with adjoining porch and an every-day-holiday kitchen with all the built-ins and plenty of breakfast area. On the upper level are four twin bedrooms and two glamour baths. The lower level has a 30 foot cherry paneled activities room with log burning fireplace and a cheerful utility room. There are lavatories on both main and lower levels. The basement provides ample hobby and workshop area. Every window commands a view of rolling wooded countryside or a picturesque pond. Offered fully carpeted at \$49,500. DONT LOOK unless you are prepared to lose your heart to this home!

It's A Value!

Close-by Oakland Hills and the Birmingham Athletic Club this brick and redwood ranch house is of warm and friendly contemporary design. There are three excellent bedrooms and two full ceramic baths. A crackling fire sets a mood for reflection in the spacious living room. The full dining room is separate and there is a rubbed redwood paneled activities room. The attractive kitchen has a full complement of built-ins and a handy breakfast arrangement. Studio ceilings lend a sense of drama to activities room, kitchen, and dining room. There is an attached 2½ car plastered garage and carpeting is included. COMPARE THIS VALUE at just \$27,500—call Hall & Young today!

HALL & YOUNG INC.

BIRMINGHAM OFFICE 345 S. Woodward MI 6-7900
BLOOMFIELD OFFICE 4114 W. Maple MA 6-2595

REALTORS
INTER-CITY REAL ESTATE REFERRAL SERVICE, INC.

from cities across America... Buyers for Birmingham & Bloomfield Homes

CHARTER MEMBER

300 S. Woodward, Birmingham MI 4-6700

AMONG TOWERING OAKS AT WENDOVER

The handsome home pictured is just one of four new 1962 models nearing completion in Wendover. Just three minutes from downtown Birmingham and a short walk from new Birmingham Elementary and Junior High Schools, this is by all odds your finest close-in Community.

Homes now available:

3086 Myddleton—Multi-level—4 Bedrooms, 2½ baths, on heavily wooded site. Hotpoint Color Kitchen, large Breakfast Area, Specious Slate Entry Hall. Walnut paneling in Deluxe baths. Hot Water Perimeter Heat zoned for Comfort and Economy. \$34,900.

3069 Myddleton—Authentic New England Colonial set among the trees on a quiet court. Spacious Marble Foyer. Master Bedroom Suite with fireplace and dressing room, Beamed Family Room with Floor to Ceiling Fireplace. Large Porch with Barbecue. A most appealing Four Bedroom home packed with Unique Luxury features. \$38,900.

Two other outstanding models nearing completion. See these any day 1 to 6 including Sundays. Take Adams Road to Wendover Road, right to Myddleton. You'll see the signs.

MAX BROOK INC.

300 S. Woodward, Birmingham MI 4-6700