

Do you know many people who bring real meaning to their lives (and some of it to those they touch) by spending regular times in quiet thought, meditation . . . on subjects much beneath the thin, superficialities of living? If you know such people, have you observed that they seem to possess poise, a manner of "being relaxed and at home on this earth"? Are you happy one of such persons?

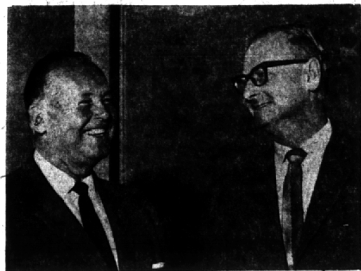
The Birmingham Eccentric

BIRMINGHAM, MICHIGAN

Thursday, December 7, 1961

SECTION
B

BUSINESS NEWS



Walker Heads Campaign

George W. Walker (left), 267 Woodberry, Bloomfield Hills, recently named chairman of Michigan's 1962 Radio Free Europe Fund campaign, confers with Radio Free Europe Director C. Rodney Smith during a visit in Munich, Germany. Walker, industrial designer and former vice president and director of styling at Ford Motor Co., recently returned from an extended tour of Europe including Radio Free Europe's broadcasting headquarters in Munich. Radio Free Europe broadcasts daily in five languages to an estimated 60 million people in the East European satellite countries behind the Iron Curtain.

Former Mag Editor Joins PR Staff

Murray K. Simkins, 4824 Tullamore, Bloomfield Township, former magazine editor and writer, has joined the public relations staff of Clark & Roberts, Inc. Simkins was with Chilton Publications, Inc. for 13 years. In that time he held positions as Detroit bureau chief for several of the Chilton magazines and as executive editor of Commercial Car Journal. He was training program coordinator with the Jam Handy Organization for a year and before joining Clark & Roberts operated a firm for developing training programs for advertising agencies with automotive accounts.

Carron Appointed Relations Manager

Theodore J. Carron, 1528 Yorkshire, Birmingham, has been appointed manager of employee relations at Ethyl Corp.'s Detroit research laboratories. This completes integration of Ethyl's employee-relations functions into a single, corporation-wide department headquartered at its main office in New York. Since joining the Ethyl laboratories in 1946, Carron has served in a number of technical and administrative positions, most recently as assistant director of administration and services.



ROBERT F. BYRNE

R. F. Byrne Appointed to Naegele Post

Appointment of Robert F. Byrne as vice president and director of sales for the outdoor advertising division of Naegele Outdoor Advertising Company of Michigan, Inc., has been announced by Arthur A. Corve, executive vice president and general manager. Byrne lives at 6270 E. Surrey, Birmingham. Prior to joining Naegele, Byrne was divisional sales manager for Amhurst-Busch, Inc., St. Louis, Mo. Previous to this, he was district sales manager for S. C. Johnson and Son, Racine, Wis.

Name Panny To High Post

The board of director of Pioneer Engineering & Manufacturing Co. recently elected William P. (Bill) Panny, 33, of 2502 Derby, Birmingham executive vice president of the 33-year-old engineering and design firm.

As executive vice president, Panny will have complete charge of all four divisions of the company. He received the 1958 Engineering Society Award as the outstanding young engineer of the year. He was assistant chief engineer of Dodge truck engineering of Chrysler Corp. before moving to Pioneer in 1960 as vice president and manager of the firm's Wettlaifer plant one division.

Panny is a registered professional engineer and is active in the Society of Automotive Engineers, Engineering Society of Detroit, National Security Industrial Association and the Southfield Businessmen's Association.

Bouchard Named Promotion Manager For Department

Donald A. Bouchard, 17360 Locherbie, Beverly Hills, has been named manager of sales promotion and advertising for the Chevrolet parts and accessories department.

A 13-year employee, Bouchard joined the parts and accessories department in Flint. Later he served as P & E manager of the Cleveland and Detroit zones. He was promoted to the company's central office at Detroit a year ago as assistant manager of merchandising.

Where Were You
at 6:10 P. M.
Yesterday?



No matter where you were we hope that you had a radio tuned to WCAR-1130 on your dial—to the Business News and Market Summary—programmed especially for you, the investor.

We are extremely proud to be the sponsor of this market show 5 days a week . . . and, of course, very pleased to hear from our friends who they like the show. If you haven't been a regular listener, why not make it a point to tune in tomorrow at 6:10 P.M. and listen to our market show.

MANLEY, BENNETT & CO.
MEMBERS NEW YORK STOCK EXCHANGE

Buhl Building, Detroit 26
WOodward 5-1122
Enterpris 6209 (Dial "0")

Bloomfield Hills, Mich.
JOrdan 6-4650
Midwest 7-9900

Listen to WCAR-6:10 P.M.—Monday through Friday—
For the latest Market News—1130 on your dial

Nothing finer under
7 DAYS-6 NIGHTS
\$42 PER PERSON
DOUBLE OCCUPANCY
DEC. 1 - JAN. 14
FORT LAUDERDALE'S LARGEST PRIVATE BEACH—OLYMPIC POOL—
FREE LOUNGES—TOP ENTERTAINMENT
Nothing Comes Between You . . . and the Atlantic
SEE ANY TRAVEL AGENT
or write us direct for free color brochure

PARADISE SPECIAL

Galt Ocean Mile Hotel
3200 Galt Ocean Mile • Phone LO 4-8581
FORT LAUDERDALE, FLORIDA

Aid Association Reaches \$2 Billion

Aid Association for Lutherans, with home office in Appleton, Wis., has reached the \$2 billion mark of life insurance in force and is among the top three per cent of all life insurance organizations in the United States and Canada in the amount of insurance in force, reports Elmer F. Senrow, 1169 Floyd, Birmingham, AAL general agent here.

Organized in 1902, AAL reached its first billion dollars of insurance in force in 1956, and \$1.5 billion in 1959. It took 54 years to reach the first billion, while less than five and a half years for the second billion.

Ranked as the largest fraternal insurance society, AAL also ranks equivalent to 38th of ordinary life insurance in force among the 1,455 life insurance companies in the United States.

Gebb Appoints Sales Manager

Frederick V. Gebb, president of Gebb Associates, Inc., 250 Martin, Birmingham, has announced the appointment of Thomas H. Clapp as sales manager—personal lines.

The firm services commercial, industrial and personal insurance accounts throughout the Midwest. Clapp is a graduate of Wayne State University. A resident of Birmingham for the past three years, he is presently executive vice president of the Birmingham Junior Chamber of Commerce.

A subscription to The Eccentric brings you the community's top news events 52 times a year.

Cotton Rugs

washed and fluffed
9x12 size or smaller

Linens

sheets, pillow cases, tablecloths, etc., washed and carefully finished on our steam heated ironer.

Shirts

washed, beautifully finished, and put in polyethylene bags to keep them clean.

Birmingham Laundromat
1600 So. Adams Rd.
1 Blk. N. of Lincoln

MI 4-8225



THE BEST IN LAUNDRY SERVICE

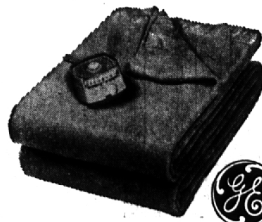
IS YOUR MATE...



A SLEEPING BEAUTY or just a BIG BEAR?

IN ANY EVENT,

HE or SHE WILL ENJOY THE SHEER LUXURY OF



THE NEW Southport

DELUXE Automatic BLANKET FROM GENERAL ELECTRIC

Light as a breeze, soft as a cloud, with wintertime warmth to relax to!

- Dependable General Electric Sleep-Guard® . . . adjusts with the temperature!
- Tailored corners for easy bedmaking!
- Light, beautiful blend of rayon, cotton, Acrilan.
- 100% Nylon binding for greater beauty—7 inches wide!
- Six fashion-wise colors, including White!
- Your choice of twin, double or king size!

Exclusively yours at Hawthorne's

HAWTHORNE ELECTRICAL COMPANY
Since 1914

162 N. WOODWARD MI 4-2200

OPEN 9 to 9 p.m.

Weekdays until Christmas

OUR GENERAL ELECTRIC BLANKET PRICES

START AT \$14⁹⁵

Choose from 4 lovely models

A lasting gift . . . A treasured gift
A thoughtful gift

a gift of SECURITIES

A gift of securities will be long remembered because securities provide lasting value . . . offer future growth potential . . . reflect care and consideration on the part of the giver.

A gift of securities can provide youngsters with an awareness of how stocks and bonds contribute to economic growth and industrial expansion, while providing a foundation for a secure financial future.

A gift of securities may be the start of a second income for relatives, friends, or employees.

A gift of securities is always a welcome addition to the portfolio of any investor.

Watling, Lerchen's registered representatives will be happy to assist you with the selection of your Christmas Gift Securities, small or large. Drop in to our nearest office at your earliest convenience. Or, if you prefer, you can phone us at any time for complete information on the wide range of securities available.



STOP IN OR PHONE US SOON
Watling, Lerchen & Co.

Members New York Stock Exchange

CRESON BLDG. W. MAPLE & CRANBROOK RD.

BIRMINGHAM, MICHIGAN PHONE: MI 6-9100

Ann Arbor • Jackson • Kalamazoo • DETROIT • Pontiac • Dearborn • New York
SERVING MICHIGAN INVESTORS SINCE 1916