

U.S. Must Uphold Berlin Pledges, Says Broomfield

UNION LAKE VILLAGE—Congressman William S. Broomfield (R., Oakland County) declared Saturday that the United States will stand behind its commitments to West Berlin "at all costs," even if it means war.

The Royal Oak lawmaker, a member of the House Foreign Affairs Committee, criticized what he termed "the new appeasement—the rationalization which would have us believe that Berlin isn't really important."

Broomfield addressed a several thousand Oakland County Republicans attending a Republican family outing at the John F. Ivory farm near here. (Con-Con) delegate George Romney also spoke. Excerpts of his address will be found on Page 1-D.)

POINTING OUT that the U.S. had made "iron-clad" commitments to Berlin, Broomfield announced that western allies would "stand behind freedom," behind our ideals and principles.

"We didn't stir up this crisis. It was forced upon us. We don't want to fight a war over this issue, but we will if we have to," Broomfield declared.

Broomfield predicted that if the U.S. fails to stand fast the Soviet Union will "muddle away at the free world bit by bit, piece by piece until there is little left to defend."

"If we give up West Berlin to

Student from Rio Feted at Picnic

Mr. and Mrs. John Hart of Tully Road, Bloomfield Hills, were hosts at a picnic on Wednesday evening honoring the American Field Service exchange student who will be attending Bloomfield Hills High School this year.

Edimundo Daudt da Veiga is from Rio de Janeiro, Brazil, and is the guest of the John Cowan family, Bloomfield.

Edimundo's father is an architect and builder in Rio. His great-grandfather was a former president of Brazil.

The picnic was to acquaint him with some of the students at Bloomfield who will be his classmates during the coming year.

Among those who attended were students who will be in his home room, members of the American Field Service Club, and members of the adult A. F. S. committee of which Mrs. Mitchell Deeb of Bloomfield Hills is president.

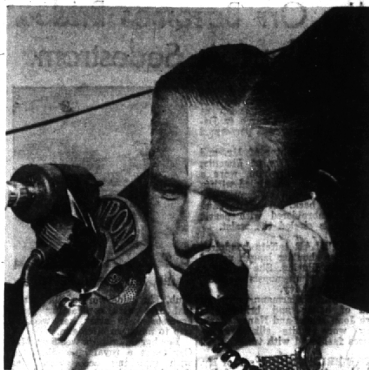
Birmingham Girls On Extended Trip

Patty Hummel, daughter of the Charles Hummels of Devon Lane, Birmingham, and Margaret McCall, daughter of Edward McCall, 1001 S. 1st St., Birmingham, are on an extended trip.

The girls drove from Birmingham to Lake McDonald in Montana and from there to Utah and then to Seattle. They left their car in Seattle and took a boat to Vancouver Island where they spent two weeks. They also visited Ketchikan, Alaska, Juneau and Anchorage.

Have You Met . . .

The residents of 4238 Meadow Lane Drive? Mr. and Mrs. Robert R. Grindley moved from Prairie Village, Kan., on Aug. 1. He is a sales engineer with E. F. Hauserman Co. They have a daughter, Anne. Mr. Grindley graduated from Cranbrook School and Union College. He is a member of Chi Psi fraternity. His wife graduated from Butler University and was a member of Pi Beta Phi sorority. They enjoy music and sailing.



Romney Kicks Off Campaign

American Motors President George Romney of Bloomfield Hills kicked off the state GOP's "Romney a friend for Con-Con" campaign during his appearance at Saturday's "Family Fun Day" near Union Lake. He picked a number at random from the phone book and discussed the importance of Con-Con and the need for everyone to vote in the Sept. 12 election. The GOP hopes Romney's call will touch off a chain reaction of phone calls and boost the turnout at the election.



MSU Alumni Club Plans Busy Year

Looking forward to another very active year in the Michigan State University Club of Oakland County with Ned Boarden, president, are William Monro and Philip Skillman, vice president and Marvin Howell and Martha Miller Hanson, treasurer and secretary.

Serving as president of the women's auxiliary is Mrs. James Garretty. Mrs. Harold Gasser will be vice president and Mrs. Harold McDavid and Mrs. Paul Wheaton will serve as secretary and publicity chairman.

HIGHLIGHTING the fall activities will be the MSU-Michigan game. The club will have tickets and transportation available to Ann Arbor.

The club has for years awarded scholarships to Oakland County students for MSU with money raised during the year. It also provides an excursion for high school students to East Lansing in the fall, a college information night and a scholarship banquet in the spring.

Neighborhood Picnic

Present and future residents of Kirkwood Subdivision attended a barbecue picnic Sunday. On the agenda for the day were games for the children and Ricky the Clown.

PRE-TEEN SHOWING

BIRMINGHAM— Thursday, August 31st
Friday, September 1st
Saturday, September 2nd

GROSSE POINTE— Thursday, September 7th
Friday, September 8th
Saturday, September 9th

Informal Modeling, 3 to 5 P. M., Thursdays and Fridays

YOUNG CLOTHES

116 SOUTH WOODWARD AVE. Midwest 7-1499 BIRMINGHAM
110 KERCHEVAL AVE. Tuxedo 1-7227 GROSSE POINTE FARMS

BLOOMFIELD COUNTRY DAY SCHOOL

1050 East Square Lake Road Birmingham

School for Girls

Grades 7 through 12 College Preparatory

Curriculum includes

- Foreign languages • Music • Sports
- Art • Science • Bible Literature

Small Classes

Individual Attention Outstanding Faculty

Midwest 1-6611

You will find many bargains in The Eccentric Classified Columns.

HAPPY CHILDREN..

HAPPY FEET!

Child Life SHOES

Your youngsters will be right in step with style and comfort with complement-catching CHILD LIFE Shoes... made right for growing feet. Let us show you how really fine they are... soon!

Black & Saddle Shoe

Brown & Black Scuff-proof shoe

Black Nylon and Black Leather trim

• Free Parking in rear of store

HANSEL 'N' GRETEL Shoppe

135 S. WOODWARD—MI 6-4722—OPEN FRI. EVES

FOR FAST, CONVENIENT CARRY-OUT SERVICE... PHONE MI. 6-9544

The Pantry Shelf is the ideal answer to your needs for quality carry-out foods for special occasions or simply some "break-the-routine" items from Greenfield's any day. A complete meal, a pastry, a snack... your order will be packed and ready for you the time you choose.

P.S.—When you arrive to pick up your order, be prepared to meet temptation. You may be captivated by the array of appetizing items on display and take home an extra pie, cake, or evening snack supply. You'll enjoy yourself.

Greenfield's RESTAURANT

725 South Hunter Blvd. Birmingham

The series of exhibits in our main lobby concludes Thursday, August 10—Sunday, August 13... with a display of authentic Japanese dolls conducted by Birmingham Travel Service, Inc., and Japan Air Lines.

Out of This World...

Where in the world can you find carpet to cover a 9' x 12' room for less than \$30, pad included? **\$29⁹⁵** 9 X 12

Harold B. Brown has them — Viscose or 100% Nylon — in room sizes or made to your exact dimensions. Thick long-wearing broadloom with built-in rubber pad — rich colors in tweeds or plains.

NOTE THESE SIZES . . . AND PRICES

VISCOSE	100% NYLON
9'x12'—\$29.95	9'x12'—\$38.50
12'x12'—\$47.50	12'x12'—\$72.50
12'x15'—\$67.00	12'x15'—\$105
12'x18'—\$72.50	12'x18'—\$110

Harold B. Brown BUDGET TERMS

2863 Woodward (Between 11 1/2 - & 12-Mile)
Open Monday, Thursday, Friday Eves. 'til 9

RB Fashion leaders for over 30 years

CUED FOR CAMPUS

THAT MAJESTIC LOOK FROM EARLY CLASSES TO WEEK-END DATING

Well-studied separates with an educated air... winning high marks on campus! A glorious array of stunning separates styled in elegant, rich-textured fabrics... and in such exciting colors... Bittersweet, Mallard Green and Golden Wheat... plus luscious Oatmeal. These campus-correct co-ordinates cover every facet of your fashion life... take you beautifully through the day and on to dates. Oatmeal wool tweed suit at right, sizes 8-16, \$29.98. Oxford dacron and cotton blouse, sizes, 30-36, oatmeal or white, \$5.00. Brushed wool pull-over sweater, left, mallard green or gold, sizes 36-40, \$12.98. Plaid wool slacks in mallard green and gold, sizes 10-16, \$14.98.

142 West Maple Road, Birmingham

Branches in Royal Oak, Ferndale, Mt. Clemens