

Students

(Continued from Page 3)

room addition at Eastover Elementary School expected to be completed between Sept. 1 and Thanksgiving.

Construction on an addition for 500 students at the senior high school will begin Sept. 1 and be completed by next fall.

SCHOOLS AND school additions aren't the only new projects in the Bloomfield Hills system.

Staff resignations will bring a new counselor and a new dean of girls into the system. Replacements will be determined within the next week.

Teaching methods will also have new aspects.

Team teaching whereby a group of instructors team-up to lecture on specialties will be practiced.

Experiments in un-graded classrooms which afford pupils an opportunity to work as fast as they are capable will be conducted at Vaughan Elementary School.

IN THE curriculum category, previous work on curriculum revision in most subjects including English, science, and mathematics will be upgraded to meet college entrance requirements.

A \$300,000 increase from \$1,650,000 to \$1,950,000 in Bloomfield Hills' budget will finance this year's improved program and increased expenses.

SOUTHFIELD'S anticipated 400 to 600 additional students will jump enrollments in its 12 schools to between 7,800 and 8,000.

However, existing classroom facilities will absorb increased registrations. No additional facilities will be provided.

Addition of eight teachers will bring the teaching staff to 286.

SOUTHFIELD SEEMS to be concentrating this year on educational programming and curriculum at the elementary, junior and senior high school levels.

At the elementary level are an expanded program in the teaching of reading readiness, establishment of in-service workshops in the teaching of early elementary mathematics, continuation of experimental programs in 4th, 5th and 6th grade mathematics and continuation of studies in individual reading instruction.

JUNIOR HIGH curriculum improvements include conversational French and Spanish courses and a history and geography of Michigan course in the eighth grade.

Additional elements of interpretive speech, discussion techniques, drama, radio and film speech, and history and appreciation of the theatre will be introduced in expanded speech and dramatics courses.

SENIOR HIGH curriculum improvements will bring expanded offerings in business education, science, mathematics, communication skills, creative writing and world literature.

Expansion of science courses will extend study from general biology through advanced chemistry and physics.

THE SOUTHFIELD school system will begin its third year of participation in the National Defense Education Act program designed to improve educational programming in the teaching of science, mathematics and foreign languages.

Southfield's \$300,000 increase in this year's budget of \$3,600,000 is attributed to additional teachers and increases in professional staff salaries. Salary increases amount to almost \$200,000 spread over about 350 professional staff members.

THE BIRMINGHAM area's eight Parochial schools expect an overall enrollment of 5,513.

Two additions at Holy Name will house four new classrooms, a library, cafeteria and athletic facility. The school will repeat last year's enrollment with 980 registered.

A one-story addition at St. Regis provides addition of a 6th grade this year, increasing the total enrollment by about 50 students. Conversion of a former chapel added three more classrooms to the school. The equivalent of six other classrooms has been added but the area will be used as a chapel until a later date.

SIX NEW CLASSROOMS at St. Bede's in Southfield provides for an increased enrollment of about 400.

Addition of a 4th grade at St. Columban's will boost this year's

student body to almost 400.

Although no new additions have been installed for some 930 pupils at Our Lady Queen of Martyrs, the convent was recently completed.

St. Hugo Country Day School

will have the same enrollment as last year of 465. Work on the school's chapel addition may be completed by the fall.

ADDITION OF AN 11th grade at Marian High School will put enrollments at the 600 level. However, no new construction will take

place to handle the addition of almost 200 students.

Enrollments at Brother Rice High School will reach between 450 and 500 with the addition of a 10th grade this year.

CRANBROOK SCHOOL enrollments will remain about the same

as last year with 370 expected at Cranbrook School for Boys, 292 at Kingswood and 224 at Brookside.

Kingswood leads Cranbrook Schools in additional teachers with 16 new instructors bringing the teaching staff force to 40. Cranbrook School for Boys will have six new teachers and Brookside two.



Inspect and Take Note

Sportcoats in an abundant array of color and pattern—the best in their class for the best appearance in class.

- JR., regular slim husky\$18.50 to \$19.50
- PREP, regular slim husky\$25.00 to \$28.50
- YOUNGMEN, regular short, long, X-long\$32.50 to \$45.00



The Prep Shop

Sartorial Refinements For Young Men

237 Pierce Birmingham AL. 6-8188

Member of the Birmingham Credit Plate Association



It Was Written in the Stars

It was inevitable that Puritan—Science—and the Prep Shop should join to bring you the first 100% lambs wool sweater that is unconditionally machine washable and dryable. These Puritan Aquaknit sweaters are available in young men's sizes 40 to 46.

- Traditional V-Neck 11.95
- Conventional Cardigan 15.00
- Sleeveless V-Neck 8.95
- 7 Stud Cardigan 15.00



The Prep Shop

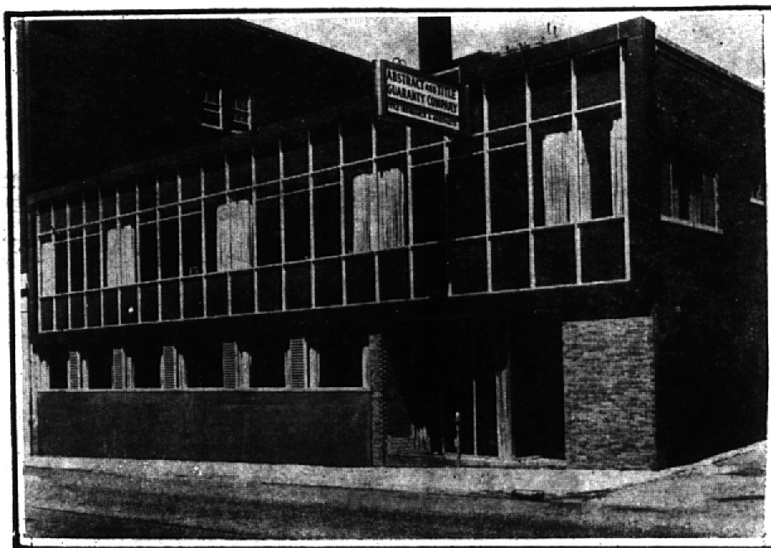
Sartorial Refinements For Young Men

237 Pierce Birmingham AL. 6-8188

Member of the Birmingham Credit Plate Association



NEW HOME OF PONTIAC BUSINESS INSTITUTE



Enroll now for the Fall term beginning Sept. 5
(Night School Sept. 11)

PONTIAC BUSINESS INSTITUTE, INC.

West Lawrence Street
Pontiac, Michigan

Training for Business Careers since 1896