

Bloomfield Township Fire Station No. 2 Spends Serene July

BLOOMFIELD TOWNSHIP — Although the total number of fire calls answered by Bloomfield Township's fire department in July was up 25 per cent over the same month last year, fire station No. 2 had almost no business at all.

The station is located in the northeast section of the township. It's otherwise perfect record was marred by one 25-minute run to extinguish a smoldering electrical appliance.

IN CONTRAST, electrical No. 1 and 3 answered 37 calls during the same 31-day period.

With \$685,900 worth of property endangered, fire loss in the township was held to \$2,265.

David K. Falvey

COMPLETE INSURANCE PROGRAMS ARRANGED

insurance agency
135 n. woodward, Birmingham
midwest 4-7803

- life
- C. L. U.
- fire
- automobile
- casualty

ORDINANCE NO. 52

AN ORDINANCE TO AMEND ORDINANCE NO. 29 ENTITLED "AN ORDINANCE REGULATING AND RESTRICTING THE HEIGHT, NUMBER OF STORES AND SIZE OF BUILDINGS; THE SIZE OF OPEN SPACES; THE DENSITY OF POPULATION; THE LOCATION AND USE OF BUILDINGS AND LAND FOR TRADE, RESIDENCE AND OTHER PURPOSES; CREATING DISTRICTS FOR SAID PURPOSES; AND ESTABLISHING THE BOUNDARIES THEREOF; PROVIDING FOR CHANGES IN REGULATIONS, RESTRICTIONS, AND BOUNDARIES OF SUCH DISTRICTS; DEFINING CERTAIN TERMS USED HEREIN; PROVIDING FOR ENFORCEMENT; ESTABLISHMENT OF A ZONING BOARD OF APPEALS; AND IMPOSING PENALTIES FOR THE VIOLATION OF THIS ORDINANCE."

The Village of Beverly Hills Ordinances:

Section 1.01. That Ordinance No. 29 entitled "An Ordinance Regulating and Restricting the Height, Number of Stories and Size of Buildings; The Size of Open Spaces; The Density of Population; The Location and Use of Buildings and Land for Trade, Residence and Other Purposes; Creating Districts for Said Purposes and Establishing the Boundaries Thereof; Providing for Changes in Regulations and Boundaries of Such Districts; Defining Certain Terms Used Herein; Providing for Enforcement; Establishment of a Zoning Board of Appeals; and Imposing Penalties for the Violation of this Ordinance" be and the same hereby is amended by amending the Zone Map attached thereto and made a part thereof as follows:

A. That the following described property is changed from Parking (P) zone use to Non-Retail Business (B-1) zone use:

1. The North 127 feet of the South 188 feet of the South 200 feet of the North 491 feet of lots 13 and 14 of Crystal Springs subdivision.

Section 2.01. Public hearing having been held hereon August 7, 1961, and the statutory notices having been published and mailed, the provisions of this Ordinance are hereby declared to be immediately necessary for the preservation of public peace, health and safety and hereby ordered to take effect immediately upon publication.

Made and passed by the Village Council of the Village of Beverly Hills, Michigan, on the 7th day of August, 1961.

Marvin B. Cline, President
Fannie Adams, Village Clerk

4 Area Residents On Metropolitan Plan Commission

BLOOMFIELD TOWNSHIP — Former Gov. Murray D. Van Wagner, 2890 Oakland Drive, Bloomfield Township, Supervisor, Arno L. Hulet and two other Oakland County men have been named to the Detroit Metropolitan Area Regional Planning Commission.

The appointments were made by Gov. John B. Swainson who also named Franklin resident George Catlin and J. Robert F. Swanson, chairman of the county planning commission, to the regional planning group.

Van Wagner was the only area man appointed to represent the public at large. A total of 17 appointments was made.

SWANSON, whose term expires June 30, 1964, was re-appointed. Catlin's term expires the same date and Hulet will serve a term ending June 29, 1962.

Appointments were made on the nominations of governing bodies whose representation is required by law. The purpose of the 72-member commission, serving four counties in addition to Oakland, is to guide the physical development of the metropolitan area.

Three Local Boys Win Scholarships From Newspaper

BEVERLY HILLS — Two village carriers for the Detroit News and one from Royal Oak were named winners recently in the Detroit News scholarship competition.

The winners are Lee Anderson, 13, of 16276 Lauderdale; John Mahr, 17, of 31755 Verona Circle; and Robert Materka, 4191 Normandy, Royal Oak.

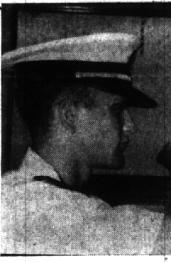
The boys earned the \$500 scholarships for outstanding achievement in school and community activities and for good performance as news boys.

ANDERSON HAS set his goal in mathematics at the University of Michigan. He is president of the National Junior Honors Society at Groves High and is a member of the band.

Mahr, a member of the Jets and also Junior Achievement, plans to attend the U of M to major in medicine.

Materka, a three-time winner of the award, will also attend the U of M where he will major in engineering.

DUKE ARNOLD, a resident of Bloomfield Township, is the Detroit News district manager for the Beverly Hills area.



S. E. WEINER

Midshipman Weiner Aboard Destroyer

NORFOLK, Va. — Naval Reserve Officers Training Corps Midshipman first class Stephen E. Weiner, son of Dr. and Mrs. Maurion E. Weiner of 30900 Lahar, Birmingham, is taking the ship's bearing while undergoing training aboard the destroyer USS Stormes operating out of Norfolk, Va.

He will return to fall studies at college after the cruise ends, Aug. 15.

During the cruise, the midshipman witnessed the end of Capt. Virgil I. Grissom's successful space flight, July 21, since the Stormes was assigned duty as a rescue destroyer for the Astronaut's space shoot. The midshipman visited New York Aug. 5 to 9.

Mid. Weiner is a member of the class of 1962 at Miami University in Oxford, Ohio.

Named to Post

LATHRUP — Councilman Vincent Zetell was appointed election commissioner for the Sept. 22 election. The appointment was made by the council at Monday's meeting.

Do you know that the Detroit Cerebral Palsy Center is devoted exclusively to the diagnosis, treatment and guidance for the 5,000 men, women and children in the Detroit area who have Cerebral Palsy? These services are free and available just for the asking. Contact Detroit Cerebral Palsy Center, 251 Brady, a Torch Drive service.

BOB FROST SEZ:

"Save time, wear by crossing tires on your car every 6,000 miles. If you have a new car cross just the tires on the ground—leave the spare tire in the trunk will increase the value of your car when you trade it in."

"Whenever you have an automotive question call on me, Bob Frost. I'll be glad to assist you with my deal."

"If you're interested in a new Continental let me give you our prices. I'm sure you will be happy with my deal!"

PARK MOTOR SALES
COMET • MERCURY • CONTINENTAL
18100 WOODWARD
Just North of 6 Mile Road
TO 9-5000

TILE SALE

SANDRAN
New Beautiful Patterns—Also
• VINYL FORECAST
• MANITEX
• BIRD VINYL
from 6-Ft. 9-9¢
12-Ft. 79¢ Sq. Yd.

VINYL ASBESTOS TILE
Choice of Colors
\$6.99 Case of 66

ARMSTRONG ASPHALT TILE
\$3.89 Case of 80

We specialize in **FORMICA**
Armstrong's **TESSERA**
TUB ENCLOSURES
LIGHT FIXTURES
MIRRORS

U-DO-IT OR WE WILL — FREE ESTIMATES
"OUR PERSONAL ATTENTION—THAT'S THE DIFFERENCE"
FAIR-WAY TILE & SUPPLY
21 E. 14 Mile At Main
Mon., Tues., Wed. 9 to 5
Thurs., Fri., Sat. 9 to 9
Clawson, Mich. 48429

ROGERS NEW Outside Trim WHITE

NO MORE "WHITE WASHED" LOOK

No one wants the brick work on his home disfigured by streaks of chalky-like paint. Use ROGERS new Outside Trim White to prevent this. It's another scientific development by ROGERS for home preservation and beauty.

WE ARE OPEN:
Mon. thru Fri. 8 a.m. - 8 p.m.;
Sat. 8 a.m. - 6 p.m.;
Sun., 10 a.m. - 2 p.m.

J. FAWCETT & CO.
IRHA HARDWARE
Telephone MI 4-6020
Open SUNDAY 10 to 2 ••• 908 S. ADAMS Corner of WEBSTER

... build them a ROOM OF THEIR OWN!

Give them a place to play and entertain their friends without disturbing the rest of the family.

ACOUSTICAL CEILING TILE
Classic Design—First Quality
12 x 24
12 x 12
Reg. 18 1/2¢
13 1/2¢ FT.

PREFINISHED PANELING
Elegant woods such as: Elm, Walnut, Pecan, Cypress, Ash, Mahogany, Butternut, Cherry, Birch.
Low as 1/4" - 4 x 8' Sheet
\$5.95

INSULATION
Blanket Type
2 x 4's - 8 Ft. **39¢ ea.**
1 1/2" Stand. Paper enclosed

SHEET ROCK
3/8" - 4 x 8' **\$1.49**

LIBRESTRICK
Lumber Company
803 SO. MAIN, ROYAL OAK LI 8-4000
435 ETON RD., BIRMINGHAM MI 4-5300

Kirkwood ... Just in time for school!
Six homes for immediate occupancy

Finding the right home available now in time to get the family settled and ready for school can be a problem. And here are six solutions to that problem.

Each of these homes is an exceptional buy. Each has been used as a model home and most contain extra decorative features not ordinarily included in the advertised price.

Located in the Birmingham School District, Kirkwood elementary-age children attend Walnut Lake School. The older children attend Wiley Groves Junior-Senior High School. Modern, dependable school buses provide free transportation.

And we're specialists at cutting "red tape". With about three weeks until school begins, you still have time to choose the home you and your family like best, move in and easily be settled ready for the first bell!

Remember, too, that Kirkwood homes have rapidly become the standard by which other new homes in the Bloomfield area are judged. Nowhere at Kirkwood prices will you find more spaciousness, better design or greater quality construction. Couple these basic home features with an excellently planned community featuring a water system, sewers, paved roads and gas... you'll quickly see why a home in Kirkwood is best buy and your best investment in Bloomfield. Come see... this weekend.

- the CHARLESTON (New Orleans elevation) \$32,500
4 bedrooms, 2 1/2 baths, family room, 2-car garage, landscaping, carpet, drapes, many other extras.
- the CHARLESTON (Colonial elevation) \$29,700
4 bedrooms, 2 1/2 baths, family room, 2-car end-entrance garage. Dozens of other extras.
- the COVINGTON (McCall's Citation Home) \$35,900
4 bedrooms, 2 1/2 baths, family room, 2-car garage, landscaping, carpet, drapes, everything!
- the LINCOLNSHIRE (Graceous "wing" Colonial) \$30,700
4 bedrooms, 2 1/2 baths, family room, 2-car garage, carpet, dishwasher, rear patio. Truly exceptional.
- the WILLIAMSPORT (Absolutely unique) \$29,900
4 bedrooms, 2 1/2 baths, 2-car garage, unusual bi-level patio. Originally priced at \$31,400.
- the ALLEGHENY (Spacious tri-level living) \$29,750
4 bedrooms, 2 1/2 baths, family room, 2-car garage, Luxurious owners' suite complete with balcony!

Sales information office open from 11 a.m. to 8 p.m. daily and Sunday. Hours on Saturday are from 11 a.m. to 6 p.m. For information by telephone, call **MAyfair 6-7522**

Serving the People of Michigan Since 1924
Thompson-Brown Company
19426 GRAND RIVER, DETROIT 23 — KE 1-8700