

Demery's to Observe Golden Anniversary

Demery's-Birmingham and Demery's-Detroit will have extended store hours next week in observance of the 50th anniversary of the Demery organization.

Both stores will be open from a.m. to 8:45 p.m. Monday through Saturday. The golden anniversary celebration starts with a store-wide selling event at both locations.

DEMERY'S 50TH year as a retail establishment was marked by the building and opening of the corporation's second complete department store.

The new three-level structure at Woodward and Hamilton, Birmingham, was opened April 27.

MICHAEL DEMERY, a native of Ireland, came to the United States in 1911 with a small select stock of Irish linens and set up shop at the corner of Woodward and Milwaukee, now the site of the parent store.

Following his father's death in 1936, William Demery became

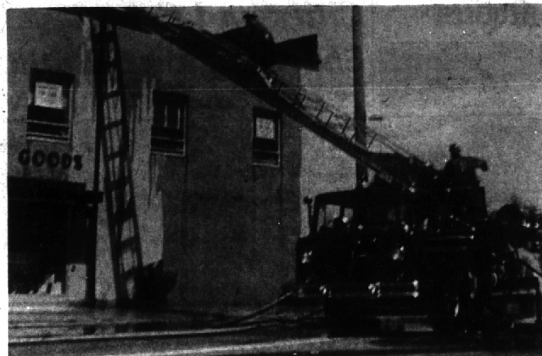
president and general manager of the organization.

In 1940 a major building expansion began and in February, 1951, Demery sold his holdings of most of the capital stock to Charles A. Peck, now president and general manager.

My Neighbors



"You have nothing to worry about as long as I get fast service!"



\$35,000 B'ham Fire

A Birmingham fireman races to the roof of the building. Twelve-year-old Ricky of The Varsity Shop at 277 Pierce to fight fire. The blaze at the scene, snapped this picture with a box camera.

is believed to have started in the air conditioning unit located between the ceiling and

Colorful Pageantry Awaits Ft. Michilimackinac Visitors

Summer travelers in Michigan will find pageantry combined with practicality at historic Fort Michilimackinac in Mackinac City on the northern tip of the state's lower peninsula.

Straits Avenue, once a jogging dirt trail through Mackinac City State Park, is a paved boulevard lined with flags of the French, British and American forces that occupied in turn this military site during the 18th century.

The avenue makes it easy for Mackinac Bridge travelers on the south approach of the span to reach the fort which is still undergoing extensive restoration and archeological search.

STRAITS AVENUE terminates at an impressive gate at the east entrance to the fort. This gate and its flanks bear historic banners representing the coats of arms of the various military units once stationed here.

The French fleur-de-lis, the British lion and the white horse of the Royal American (British) Regiment fly above the fort's gate. Centering the gate top and above all the flags is a large shield incorporating the coats of arms of

all military units garrisoned at Fort Michilimackinac.

Visitors enter the park at the gate house in the center of the flag-lined entrance.

PLANS CALL FOR paving most of the roads inside the fort and state park. Ample paved parking lots also are being laid out. The state park itself offers picnic tables with grills, toilet facilities, landscaped woodland paths and a binocular outlook in the area just east of Fort Michilimackinac.

Signs outside the fort tell the story of this 18th century bastion of the Great Lakes. Even the exact spot of the 1763 Pontiac massacre of the British garrison is marked. Replicas of French fur traders' huts will be built this year southwest of the fort's land gate. They will have authentic interior displays in historic period settings.

Uniformed guides dressed as 18th century French and British soldiers are on hand to assist visitors to the fort.

INSIDE THE FORT the archeological display area has been enlarged to give viewers a better opportunity to watch the crew of uni-

versity scientists probe "history in the earth."

Along this "sidewalk superintendent's" ramp, windows look out on the "digging" area and visitors are kept informed as to what the archeologists are seeking and what they have discovered.

FOR SMALL FRY who may find an hour or two of concentrated history a bit tiring, there is a children's playground modeled on the fort itself, complete with a small blockhouse, a walkway, and even a "secret passage."

For those who do not enter the fort area there are park facilities east of the Mackinac Bridge approach. Overnight camping also is available at Michilimackinac state park.

Do you know that cancer victims can receive much needed bandages, hospital beds and transportation to and from cancer treatment centers, as well as home nursing care, by calling the Michigan Cancer Foundation, a Torch Drive service?

State Fair to Offer Hearing Test Unit

The Detroit Hearing Center's mobile hearing testing trailer will be stationed at the State Fair again this year.

According to Ralph Rupp, director of the Detroit Hearing Center, a Torch Drive Agency, the same free hearing testing program will be available for fair visitors as

last year. The center is offering the service and educational program in cooperation with the Michigan Association for Better Hearing which has loaned the agency the trailer.

THE UNIT WILL be located outside of the northwest corner of

White Hall. The program will run from 10 a.m. to 3:30 p.m. daily, Sept. 8 through Sept. 10.

Last year the center's staff tested 2,865 people, 48 per cent of whom had below normal hearing.

Michigan's main Hopewell Mound-Builder center of prehistoric times was in Kent County. A group of seven mounds are a Grand Rapids tourist attraction, the only major group preserved.

PEOPLE are really responding to OUR GREAT SALE

They're finding good buys in carpet, rugs, stair runners, oversize oval braided rugs, colonial stripe broadloom and scores of good quality items.



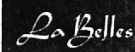
Our sale events don't come often, but when they do run, don't walk to

Best

Open 'til 9 - Woodward at 11 1/2 Mile

Georg Jensen Silver for the Brides

Our selection is very complete at this time and we invite your inspection.



137 W. Maple

BOWLING LEAGUES NOW FORMING

for ladies and gentlemen at

Strike n' Spare BOWLING LANES

The Most Beautiful Bowling Establishment In The World



52 Brunswick Lanes
Every Comfort, Finest Equipment
Surroundings Unexcelled
Fully Air-Conditioned

CALL FOR RESERVATIONS NOW... TR 5-2000

MAPLE RD NEAR TELEGRAPH RD • BLOOMFIELD TOWNSHIP