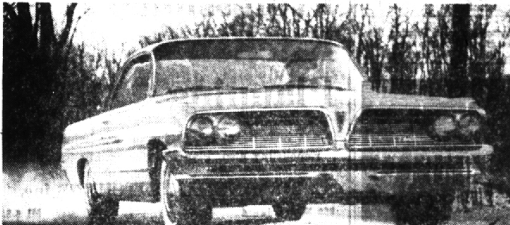


Insurance Firm Promotes Hassett

George B. Hassett, 6190 Idlewyle, Bloomfield Township, was named director of agencies for the life insurance division, C.P.A. Co. Hassett will be responsible for the establishment of C.P.A. agencies throughout Michigan. In addition he will direct recruiting, selection and training of sales personnel and agency administrators or the life insurance division. Hassett brings 25 years experience to his new post, most recently 13 years with the Equitable Life Insurance Society of the United States. He is a 10-year winner of

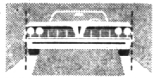
the National Quality Award of the National Association of Life Underwriters. He led his organization to eighth place in sales for the entire U.S., and to first place in the eight-state division area.

A subscription to The Eccentric brings you the community's top news events 52 times a year.



Rare form! Right price!

Pontiac's Catalina! Trophy V-8 Power. Wide-Track balance. Nothing handles like it, hustles like it. No car anywhere near its price is anywhere near it. Drive one and you'll have one delivered.



PONTIAC—THE ONLY WIDE-TRACK CAR! Pontiac has the widest track of any car. Body width trimmed to reduce side overhang. More weight balanced between the wheels for sure-footed driving stability.

NEW BREED OF "CAT" FROM PONTIAC!

Pontiac Catalina!

SEE YOUR LOCAL AUTHORIZED PONTIAC DEALER

WILSON PONTIAC-CADILLAC, INC.
1350 N. WOODWARD AVENUE BIRMINGHAM

BUSINESS BRIEFS

Diehl Appointed Group Chairman

Leslie J. Diehl, of Southfield, has been named chairman for the planning of the Sixteenth Annual Technical Convention of the American Society of Body Engineers to be held in October in Detroit. Diehl named five Birmingham men and one from Bloomfield Hills to his planning committee. The men are: W. S. Kreis, 31976 Bellevue Trail, Harold Vots, 30875 Vernon, John E. Lane, 527 Larchlea, William H. Farrell, 2447 Manchester, William L. Cloutier, 16942 Elizabeth, Birmingham, and Richard C. Nordrum, 3647 Shallowbrook, Bloomfield Hills.

Dykstra Appoints His Successor

In one of his first moves since becoming president of Ford Motor Co., John Dykstra, of Bloomfield Township, named his successor, Peter Ponta.

Dykstra had been vice president-manufacturing prior to his election as company president. Ponta will be the director of the manufacturing staff, but will not assume a vice presidency.

Ponta had been director of the manufacturing engineering and development office since October, 1960.

Henry Elected

John F. Henry, 835 Westchester Way, Birmingham, vice president and account supervisor, Detroit office of Geyer, Morey, Madlen & Ballard, Inc., has been elected vice chairman of the East Central Region, Michigan Council of the American Association of Advertising Agencies. He was formerly chairman of the Michigan Council.

Men Assume Duties

Local officers in the newly organized Macabees Mutual Life Insurance Co., successors to the Macabees, include Earl K. Akey, 19125 Coral Gables, Southfield, vice president and investment manager, and Dr. Hubert H. Johp, 4485 Chisholm Trail, Bloomfield Township, vice president and medical director.

A subscription to The Eccentric brings you the community's top news events 52 times a year.

Charipar Receives Fellowship

Jack E. Charipar, 35, 3861 Northdale, Birmingham, one of Chrysler Corporation's young engineering executives, has been awarded an Alfred P. Sloan fellowship for one year of advanced study at Massachusetts Institute of Technology's school of industrial management.

Chief engineer and director of product of the Plymouth division since April, 1958, Charipar will be in the study in June along with 43 other young men from across the country nominated by their employers and selected by MIT to participate in the program.

Sloan Fellowships are considered among the highest honors offered to young men entering major executive responsibilities. While on assignment at MIT, Charipar will work for his masters' degree in industrial management.

Since joining Chrysler Corporation in July, 1947, Charipar has served the company's central engineering division as laboratory engineer, administrative assistant to the executive engineer in research, supervisor of technical information, staff engineer in the body section, and chief styling engineer.

Tomke Observes 25th Anniversary

Arnold A. Tomke, 31075 Briarcliff, Franklin, district plant engineer with the Michigan Bell Telephone Company, last week observed his 25th service anniversary. Born in Detroit, Tomke joined Michigan Bell as a draftsman and has held various assignments until he was named to his present position in 1956.

In his current work, Tomke supervises an outside plant engineering force which has the responsibility of providing telephone facilities to meet customer service demands in Detroit's Webster, Vermont, and Kenwood exchange areas.

He took part in the advance planning for the Valiant car and was supervisor of new product plans in the export division before his assignment to Plymouth.

B'field Architects Designing School

Preliminary plans for a Detroit junior high school were approved last week by the Detroit Board of Education. Farappa-McMahon Associates, Inc., Bloomfield Hills, is designing the William Howard Taft Junior High School. Time schedule calls for working drawings and specifications to be complete for approval by June, with bids due August 1 and occupancy of the project September.

Mitchell Named By Chamberlain

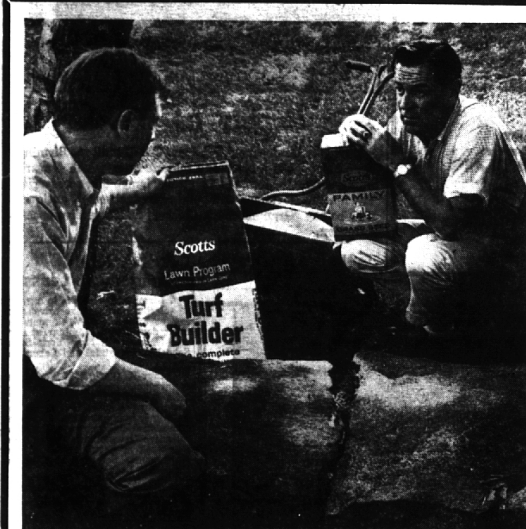
Samuel J. Mitchell, 1773 Stanley, Birmingham, has been named secretary and sales manager of Chamberlain Real Estate Co., 975 S. Hunter, Birmingham. Mitchell has been in real estate five years. Other corporate officers are Calvin M. Chamberlain, president, and A. J. Richter, vice president and general manager.

HAVE YOU DISCOVERED?
Bloomfield Beach and Boat Facility
Private—12 Lakes
Beautiful—Just minutes from home
DIAL 682-3231—Interviewing Daily

Richey Completes 10-Year Handbook

C. B. Richey, chief research engineer, Birmingham office of the Ford Motor Co. tractor and implement division, has completed a task that took him 10 years. Richey had been editor-in-chief coordinating publication of "Agricultural Engineers' Handbook." He worked with 40 contributors, including two sub-editors, to compile the book.

Olsen's Market
Learn the location of the best stores in town. Start with the center of Chester and Brown—that's Olsen's.
MI 4-1316



Seed and feed the same day

You don't need good soil to have a good lawn

Any soil—even subsoil—can give a satisfying lawn with regular feedings of protein-building TURF BUILDER®. Re-seeding a thin, spotty lawn this spring? Sow Scotts seed at the economy rate—and fertilize with TURF BUILDER on the same day. With Scotts you need far fewer seeds per square foot—and far fewer pounds of seed in all—to build a lovely, thick lawn. You'll spend less than you would for so-called "bargain" seeds, with none of the risk. Scotts is all desirable grasses, perennial and 99.91% weed-free. The most good grass per dollar—and a lovely lawn that lasts.

Ask us about the Scotts guarantee... a better lawn or your money back!

Wheel Barrow

Rubber Tire
A 9.95 Value
6.88

large 3 cubic foot capacity

Built of heavy gauge steel... roller bearing wheel... rubber tire...

Guaranteed

PLASTIC GARDEN HOSE

50 ft. **1.77**

a reg. 2.95 val.

OPEN SUNDAYS 10 to 4

FEDERAL HARDWARE SUPPLY

SOUTHFIELD at 12 Mile
OPEN THURSDAY & FRIDAY TILL 9 P.M.
KE 7-8150 — EL 6-7300

BIG — BIG DISCOUNTS

on nationally advertised

AUTO ACCESSORIES

GENUINE

CHAMPION

OR

AC SPARK PLUGS

59c ea.

all brand new in original boxes. Sizes to fit most all cars.

WESTINGHOUSE OR G-E

SEAL BEAM

Bright clear vision ahead, that's what you will have when you put in a pair of Seal Beams—12-volt, non-ohm only.

1.29 each

Long Handle Wash MASTER

Fountain Brush for Sparkling Clean Washing

reg. 2.98 Value
1.99

Fits in brush handle, gives foamy suds for better wash on cars, in windows, screens, etc.

SHALER RISLON . . . qt. 99c
GUM OUT . . . pt. 99c

GOLF BALLS

Kro-Fite . . . Dunlop . . . U. S. Royal . . . Spalding Dot . . . Sweetshot . . . Titleist. These balls are re-washed . . . with no "Smiles" or "half smiles" tested and sorted.

Asst. box of 12 **7.50**

SCRUBBED AND DRIED IN A \$360,000⁰⁰ BATHTUB—

No Wonder Natural Gas is So Clean!

Before Consumers Power Company pipes Natural Gas into homes and industries, it gives it a thorough scrubbing! This cleanliness means more efficient operation and longer life for appliances and industrial equipment. Yes, to make sure you get the cleanest fuel possible, all Gas is forced through

huge cleaners called "scrubbers" (such as these pictured here at the Company's compressor station near Manchester, Michigan). Each "scrubber" costs \$10,000 and this is only one of the many compressor stations operated by Consumers Power Company performing this cleaning operation.

SPRING IS CLEAN-UP TIME...CHANGE TO *Clean* GAS HEAT

CONSUMERS POWER COMPANY

TODAY 8 OUT OF 10 NEW HOMES ARE HEATED WITH GAS—America's most dependable fuel!