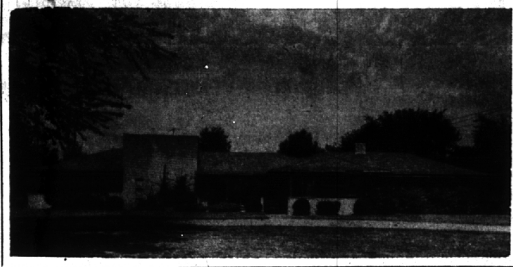


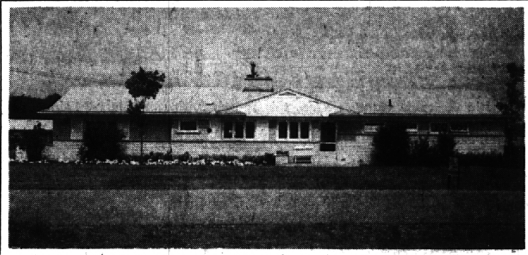
Foxcroft



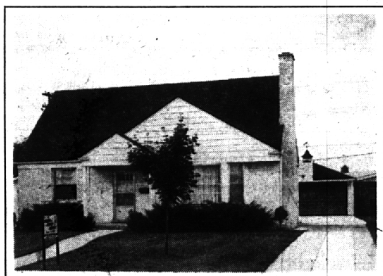
- 3 spacious bedrooms.
- 2 luxurious baths.
- Family room.
- Beautifully landscaped.
- Newly decorated thruout.
- Immediate Possession.

FRED PIERCE INC.
Realtors
460 N. Woodward
Birmingham MI 7-1414

Country Living Close To Town



Long, low grey brick Ranch on large (1/2 acre) site in an area of fine homes and friendly families. A well-built home and in tip-top condition. 29 ft. Living-Dining room with fireplace overlooks rear Patio and fenced yard. 3 good-sized Bedrooms and 2 1/2 Baths. Lovely birch Kitchen and Breakfast room. Built-in oven, stove, disposal. Modestly priced at \$27,500. Good Land Contract terms possible.



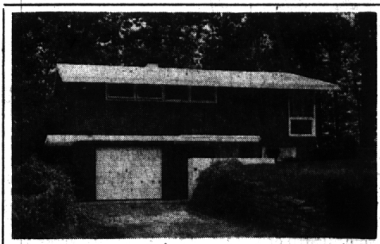
Look Again

This charming 1 1/2 Story has a number of "extras" and "plus" values. Large 3rd (23x14) Bedroom and full Bath on 2nd floor. Full Bath and 2 Bedrooms on 1st. Living room with white fireplace and bay. Separate Dining room. Pine Kitchen with eating space. Full Basement. The house is well-built, well maintained, with hardwood floors and lovely wallpaper. This is a wonderful area for children—fenced yard—room to play off main traffic roads—walk to elementary and Junior Hi-Schools. Good price at \$26,650.

Honeymoon Hideaway On Romantic Side

Perfect for newly-weds or retired couple. Beautiful wooded site surrounded by quality homes and other fine properties. LAKE PRIVILEGES on Upper Long Lake. BUT very close to good main road to town.

Studio ceilings. Gorgeous view to rear. Very pretty decor. Excellent condition and easy to maintain. Only \$22,500.



SNYDER KINNEY & BENNETT
INC.
Realtors
239 So. Woodward
MI 4-7000

4-E THE BIRMINGHAM (MICH.) ECCENTRIC Sept. 22, 1960



LATHRUP VILLAGE

And Cranbrook Village.
Southfield City

Irma Davis
MA 4-2874
(after 6 p.m.)

Hello and Goodbye For Local Residents

CRANBROOK VILLAGE—A gay series of comings and goings at the Gallen Hobbs recently has had them really hopping around. They returned from a two-week holiday in Pompano Beach, Fla. just in time to greet their daughter, Gail, who spent the summer at East Gloucester, Mass.

Gail left Sunday of last week to take up her studies at Eastern Michigan university.

For the third year, Mrs. William B. Sargent will conduct sessions in classes in Silhouette and Body culture, the latter at Southfield high school, the former at Berkeley high. The evening classes are open to all you gals and your friends; just contact the board of education. Adult education division. Going to school was never like this in my day, so have fun.

Master Peter Wallin celebrated his sixth birthday with 14 boy guests for lunch and games on Saturday and we hear the house is still jumping. He is the son of the W. L. Wallins of Chelmsford.

Over on Bainbridge, the Hugh Clarks greeted their kin, Mr. and Mrs. Al Stevens of Toronto. The Stevens' will be their house guests over the weekend.

Did you know that Mrs. Loren C. Spademan, Jr., your neighbor, heads the newly organized Republican women's club of Southfield? The club numbers some 80 members now and will welcome more Southfield area women. They met

Lathrup Rubbish And Yard Waste Pickups Commence

LATHRUP—Rubbish collection for Lathrup will be on a twice-monthly regular basis, including yard wastes between May 1 and Nov. 1 of each year, according to a new contract being agreed upon between the city and the G. C. W. disposal service of Keego Harbor.

Rubbish collection days will be the first and third Fridays of each month, beginning after 7:30 a.m. Collections will not be made on holidays but on the Thursday preceding. The new schedule began Friday of last week.

A news letter from City administrator Jerald Stone spelled out the type of rubbish that would be collected: usual household waste material, except garbage; such articles as tin cans, ashes, bottles, automobile parts and ordinarily discarded metallic substances from households; newspapers, if bundled and tied; cardboard boxes collapsed and tied; rags, leather and rubber goods and waste paper, if bundled and tied. Other articles not usually burned in home incinerators.

BUILDING MATERIAL trade and manufacturing wastes will not be collected and no crates will be removed unless disassembled and properly tied. Yard waste will include branches, twigs, shrub clippings, weeds, leaves, grass and general yard and garden waste.

Types of rubbish containers are detailed in the news letter and weight of container and contents is limited to 60 pounds. They must be in plain view along the roadside. Yard wastes must be collected according to certain rules specified in the letter.

THE COLLECTOR is bound to pick up spilled refuse, replace can lids and put back containers in the place from which they were picked up. Complaints concerning collection and removal of rubbish may be made to the DPW.

Fall Newsletter Details Programs On Roads, Trees

LATHRUP—In a Fall newsletter to Lathrup residents, City administrator Jerald Stone asked for caution in burning leaves, warned parents they are liable for Hal-fowen damage to property and reported on road maintenance and tree programs.

He noted the burning of leaves may damage asphalt pavement by burning out the binder and destroying the surface and also asked that ashes and other debris be cleaned from all ditches after use, to provide good drainage and prevent backup of ditches and culverts.

The letter said major road repairs were recently completed. A double seal coat surface has been installed in ten locations throughout the city where asphalt roads had broken up completely. Routine patching, sweeping, grading and sealcoating is being presently accomplished.

STONE SAID the complete DPW budget increased 38 per cent over last year and in the current calendar year to date, \$32,400 has been spent on road maintenance.

Trees have been sprayed twice, once for Dutch elm disease and once for Lecanium scale. Tree losses total 21 for the year. City personnel have attempted to cut the trees close to the ground, Stone said.

People who wish the stumps removed may contact James Andrus, DPW supervisor. A price of 60 cents per inch of diameter of tree trunk has been quoted by a company to the city. Andrus expects to have further information on tree replacement within a month, the letter said.

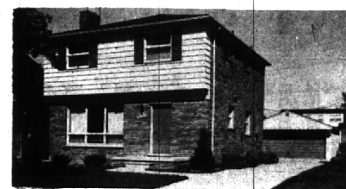
The Formula for Fine Living is a Custom Built Home By . . .

Harry Aten & Co. BUILDERS
3935 QUARTON ROAD
Midwest 4-7157 BLOOMFIELD HILLS
Complete Remodeling and Modernizing Service

WIDOW SACRIFICING



PALATIAL BI-LEVEL LAKE FRONT with 40-ft. indoor heated swimming pool. Exquisite "kitchen of tomorrow" with everything built in, including double ovens. Superb view of the lake from 31-ft. "Japanese Ash" paneled family room, living room and separate dining room. Extravagant use of white marble. Pool observatory, cocktail lounge, underground sprinkling. Far below cost. \$85,000.



Paneled Family Room
This immaculate home is richly carpeted and has a 28-ft. living room, charming den or library and 3 lovely bedrooms with a private powder room off the master bedroom. All appliances built-in—Rec. Room—2 1/2-car garage. Top Location in Birmingham Hills. \$27,750.

BLOOMFIELD VILLAGE



Absolutely immaculate 4-bedroom home in the Heart of Bloomfield Village. Unusual and spacious FAMILY ROOM just a few steps from the glorious kitchen complete with a pretty "curved" eating bay. 25-ft. carpeted living room with screened terrace adjoining 115-ft. of beautiful green lawn. 2 1/2-car att. gar. \$49,900.

Chamberlain real estate co.

Service the objective - Integrity the creed

JO 6-3866

975 S. Hunter Blvd.
Birmingham, Michigan

MI 6-6000