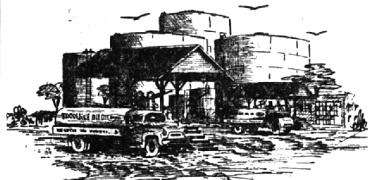


"We Serve the Suburbs"



... fine furnace oils  
see the new "Custom Mark II" oil furnace  
that's revolutionized oil heating

**TORRENCE OIL Company**  
For Service Call:  
MI 4-9000

## FALL SALE RAINCOATS



**20%  
DISCOUNT**

Talk about a duck's back!  
It's got nothing on this  
raincoat when it comes to  
water repellency. It will  
give you pampered protection  
in anything from a sudden  
cloud-burst to a long, steady  
downpour.

**Mortimer's**

123 West Maple

MI 4-6824



Beautiful Basic  
Wool Jersey  
Special 1.99

A wonderful back-drop for your wealth  
of heads and your most gorgeous pin.  
It's already a favorite for smart young  
Birminghamites. 100% worsted wool  
jersey. Skirt lined. Black, Regal purple,  
royal, emerald, red, brown, sage green,  
gold, beige. Teal. 5 to 15.

Phone and Mail,  
10rdan 6-8777

**kay baum**  
100 MAPLE  
BIRMINGHAM



## Constitutional Week

Florence H. Willett, mayor of Birmingham, takes pen in hand to officially proclaim the week of Sept. 17 to 23 as Constitution Week in Birmingham. Mrs. Newell Allen, regent of the Piety Hill chapter of the Daughters of the American Revolution, looks on. The proclamation commemorates the 173rd anniversary of the adoption of the United States by the Constitutional Convention.

### NATURE NOW

By Lydia King Frehee  
Special Writer for The Birmingham Eccentric

## Potatoes Most Popular Of Common Vegetables

Unless you belong to a family of weight-watchers, it is likely that the potato appears on your table more frequently than does any other vegetable.

The potato (*Solanum tuberosum*) is a woody, herbaceous plant whose compound, pinnate leaves, have a characteristic narcotic odor. It reaches a height of two to five feet, depending upon the species. The yellow, blue or purple flowers have a five-lobed calyx and corolla with a prominent pistil. Since the plant is bred to reproduce vegetatively, the fruit (a small berry similar to the tomato) is seldom seen under ordinary growing conditions. However, seeds are produced and used in the hybridizing of species.

ALTHOUGH THE potato looks like a root, it is a tuber which develops on an underground stem. In it, the plant stores food which is used in nourishing the next generation of its kind.

Just why these tubers are formed is not completely understood but horticulturists find that darkness, low temperatures and short days favor their development. Their growth is also thought to be associated with the presence of certain fungi in the soil which irritate the underground stems leading to an enormous activity of cell growth. If this theory is correct, the potato tuber is similar to a plant gall in which case the irritation is

caused by an insect.

Every housewife knows that if potatoes are kept in a warm dark place they begin to sprout. These shoots are produced by plant buds which grow from depressed areas on the surface of the tuber, called "eyes". Hence when we wish to propagate this plant we use a piece of the potato which contains several "eyes". The resulting growth consists of the usual stems which we see, plus the underground stems which produce the tubers.

If the underground stems reach the light, they also grow into leafy branches hence the plants must be "hilled-up" to produce a good crop. The root system develops independently below the tuber - producing stems.

POTATOES ARE widely grown except in tropical lowlands. In the United States, the five states leading in production touch the Canadian border. Of these, Michigan with its cool climate and sandy soils produce a crop with an annual value of some thirteen million dollars.

Approximately 80 per cent of every potato is water, 17-25 per cent is starch while only two per cent is protein. A certain mineral content is present, especially in the skins. During storage, there is a loss of water and some of the starch turns to sugar.

IN ADDITION TO its value as human food the potato is used in the manufacture of starch and al-



Mrs. Frehee

Sept. 22, 1960 THE BIRMINGHAM (MICH.) ECCENTRIC 5-B

col. Small and damaged tubers are frequently used as stock food. The potato grew wild in the higher plains of South America, from whence in the sixth century Spanish explorers brought it to Europe where it spread to England and Ireland and to the American colonies. A few wild plants can also be found in the southern United States and Mexico.

THERE ARE SOME 500 species of potatoes of many sizes, shapes and colors. Other members of the Solanum family (commonly called "nightshades") include such useful vegetables as egg plant, tomatoes and peppers. Belladonna, much used as a drug, belongs here as does the highly commercialized tobacco plant. Also included in the group are some familiar garden flowers as petunia and the more exotic and fragrant nicotiana. Biteweed, the common nightshade and jimson weed are native wayside plants of this family.

IN PIONEER DAYS, potatoes appeared on the table three times a day in many guises. In lean years, they have kept alive the population of much of central and northern Europe as well as that of Russia, England and Ireland. In any year, the lowly "spud" ranks second in food value only to the cereal grains.

Do you have any unwanted articles of furniture? Turn them into cash with a "quick result" Eccentric classified ad.

## Suit Is Dismissed Before City Can Take Action on It

Birmingham was sued recently, but the suit was filed and dismissed before the city commission could even act on it. A suit was filed by the Chicago Investments company in Oakland circuit court. It involved property owned by that firm at Park avenue and Island View drive and on which Birmingham has started condemnation proceedings for use as a parking lot.

AMONG ALLEGATIONS by the firm were that the city's zoning ordinance as applied in this case was confiscatory and that the city would be acquiring the property without paying fair compensation for it.

Birmingham was served with an injunction, but the city's legal counsel explained at a commission meeting that he had asked the court for dismissal of the injunction on the basis that the city's action was legal and proper. The court then dismissed the injunction.

**Pool Construction,  
Service and  
Chemical Deliveries  
STEELCRETE GR 4-3601**

OPEN 9:30 TO 5:00 DAILY  
MONDAY UNTIL 8:30



Natural Letout EMBA Argenta  
Mink Stole ..... \$695

Styled for fall . . . in Dittrich quality . . . the slim lines and classic design of this stole make it a most wanted fashion . . . Others at

\$795 \$895 \$995

PRICES INCLUDE ALL TAXES

**RICH FURS  
Dittrich**

2341 GRAND RIVER at Vernal WO 1-9100

Customer Parking Lot Adjoining

Dependability by the Dittrich Family Since 1893

Fur Products Labeled to Show Country of Origin of Imported Furs

There Is  
NO SUBSTITUTE  
for

- Quality Products
- Expert Workmanship
- Prompt Service
- Courteous Personnel

Storm and Screen Repairs

ROBERT L. DONDERO, Owner

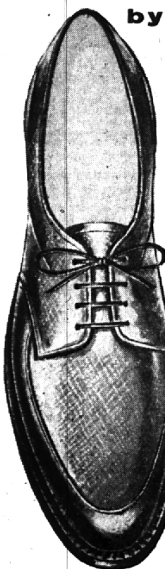
**KAYE SASH & SCREEN**

1522 N. MAIN, ROYAL OAK - South of 12 Mile  
EST. 1946 • FREE ESTIMATES • Financing Arranged • LT 5-6600  
Open Mon. - Thurs. 9-6, Fri. 9-5, Sat. 10-5, Sun. 1-5

footwear color classic

## ANTIQUE BRONZE

by FREEMAN



Rich, dark,  
modulated brown  
... a man's  
shoe color ...  
perfect for wear  
with fall's  
most approved  
apparel tones.  
Craftsmanship,  
texture, and  
styling make  
this Moccasin  
a superb choice.

FREEMAN

"Victor"  
Antique Bronze  
Textured Calfskin,  
also Black

**15.95**

Boys Shoes  
3 1/2 - 6 B-C-D 9.95

Also fine selection of Banister Shoes

**Higgins and Frank**

OF

BIRMINGHAM, MICHIGAN

268 W. MAPLE RD.

We invite you to ...

**Compare!**

**Save!**

## 1960 CHEVROLET CONVERTIBLE

INCLUDES: V-8 engine, air flow heater, power glide transmission, 2 speed wiper washers, white side wall tires, back-up lights, electric clock, parking alarm, complete sales tax and license transfer.

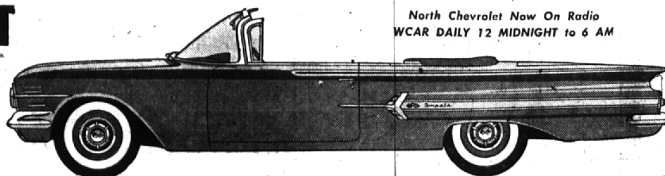
## NORTH CHEVROLET

1000 So. Woodward

MI 4-2735

**\$2716** COMPLETE  
DELIVERED  
PRICE

North Chevrolet Now On Radio  
WCAR DAILY 12 MIDNIGHT to 6 AM



No Hidden Extras  
Order A Convertible  
In The Morning ...  
Drive It Home That  
Night!