



New Brown in Shoes

"Antique bronze" arrives on the footwear fashion scene. That's the word from Higgins & Frank. This luxurious new leather shade is a rich, dark, modulated brown—selected for wear with fall's newest apparel tones. This slip-on style features an up-swept profile and a new "sock top," elasticized for ankle-snug fit.



as seen in
NEW YORKER

FOR THE SELF-ASSURED LOOK

Folkweave

SPORT JACKETS

Few sport jackets give a man a greater feeling of confidence and contentment than a Folkweave! \$62.50

superbly tailored by

H. FREEMAN & SON
PHILADELPHIA

Higgins and Frank

OF
BIRMINGHAM, MICHIGAN
268 W. MAPLE RD.

Member of The Birmingham Credit Plate Association
Daily 9:30-5:30, Fri. 'Till 9 Parking in the Rear of Store
VISIT OUR BOYS' DEPT. ON THE LOWER LEVEL

Men's Shoes Emphasize Slim Look

There's a new "high-light" flashing across the men's wear fashion scene this fall. It's a higher cut, lightweight leather shoe for dress wear, reports Shoe Fashion Service of Leather Industries of America.

Generally tapered to a finer point, in keeping with the slim lines of this year's Ivy and American Continental suits, these shoes are available in dozens of different style interpretations in smooth, grained and even brushed leathers.

AN EXTENSION of the "more shoe" look which has recently characterized American male footwear fashion, these new styles remain light aloft. Most often found as a slip-on, they use elastic gores to keep the shoe snugly on the foot.

They are available in an extended range of blacks, browns and burnished olive. The greater tones and the combinations of black with brown complement fall's glen plaids, worsteds and tweeds.

THE TREND to slimmer silhouettes in men's shoes continues in three-eyelet dress bluchers, slip-ons and stylized wingtips. More pointed toes are seen in bluchers and bal oxfords this fall. Moccosin fronts, increasingly popular this year, also show tapered influences. In the main, though, most shoe styles remain fairly rounded or squared off.

In casual shoes, the slip-on is most often seen. Brushed and smooth leather shoes are most popular in casual styles, although a number of leisure type shoes are

BIRMINGHAM ECCENTRIC

FASHION SECTION—13

available in deeply etched grain leathers.

ANKLE-HIGH chukkas are a favored fall shoe for weekend knocking-about. Loden green, charcoal brown and slate are among

Coat Colorings

White, off-white and pale beiges color many fall coats.

the more popular colors in chukka boots.

For a Heavenly Wedding

Beautiful Brides choose their lovely trousseau clothes from the one store that really knows how to please the Bride-To-Be. Won't you come in and let us show you why we've earned this reputation? We're looking forward to the pleasure of seeing you.

Bridesmaid, Mother-of-the-Bride, Cocktail and Dinner Gowns

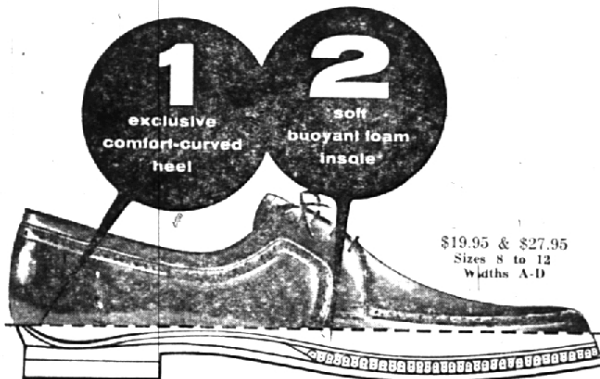
• We specialize in custom-made gowns for everyone

INGRID'S

BRIDAL SALON

2875 WOODWARD • 2 Blocks South of 12-Mile
Open Mon., Thurs. and Fri. 'Till 9 • LI 8-0010

amazing! new!
footwear's greatest comfort-value combination



\$19.95 & \$27.95
Sizes 8 to 12
Widths A-D

FREEMAN CONTOUR CUSHION SHOES

New, never-before style and

comfort sensation makes every step

pure pleasure! Exclusive Freeman design is cupped at the heel like the palm of your hand . . . molds naturally to your foot.

Soft foam insole puts buoyant new spring in your walk. Yet with all this matchless comfort, you get superb Freeman styling, craftsmanship, and the luxury of Freeman leathers. Many styles to choose from. Drop in . . .

try on a pair . . . feel for yourself!

Also fine selection of Banister Shoes

Higgins and Frank

OF
BIRMINGHAM, MICHIGAN
268 W. MAPLE RD.