

Southfield Schools To Study Possible B of E Structure

SOUTHFIELD — The board of education Monday approved a study on a possible future board of education building. Sites tentatively discussed were the proposed Southfield Civic center, or a location to adjoin the next school building or link with a present system building. Cost would probably be financed through a bond issue, requiring a vote of the people.

Administrative offices are presently sandwiched within the high school offices, leaving neither the school system or the high school administration sufficient space. The high school building was not designed to accommodate board offices.

Whether garages, workshops or bus shelters would be linked with a possible B of E building is also to be studied.

Do you have any unwanted articles of furniture? Turn them in cash with a "quick result" Eccentric classified ad.



ECCENTRIC PHOTO

CLOSE-OUT SALE!

ALUMINUM - COMBINATION

WinterSeal DOORS \$25.50
PRE-HUNG

All stainless steel hardware

Reg. 32-50 size

WOODCRAFT COMPANY

Serving Satisfied Customers Since 1923

1184 Grant, S. of Lincoln

MI 4-0424

PLEASANT STREET



3 bedrooms and bath up, Den or 4th bedroom and full bath down.

- Beautiful 25' family room with fireplace
- Living room with fireplace
- Separate dining room
- Large deep lot
- Screened porch
- Fully carpeted
- Complete fire alarm system
- Land Contract Available

By Owner

Midwest 4-5076

Boulevard Conversion Considered by Cities

LATHRUP — Converting Evergreen road to a boulevard will involve an agreement with the City of Southfield, according to a report from Mayor Richard N. Cogger at a recent council meeting.

Engineers Ray Smit and Frank DeBecker, consider a boulevard feasible if an additional 15-foot right-of-way can be obtained on each side of Evergreen. Already dedicated is a 120-foot right-of-way.

Smit, representing the firm of Ayres, Lewis, Norris and May, Lathrup consulting engineers, and DeBecker, representing Spalding DeBecker, consultants for the city of Southfield, met recently with Cogger and Lathrup city administrator Jerale Stone.

The boulevard proposal, emanating originally from Southfield, would re-locate the meandering Rouge river on boulevard islands, replacing garages ordinarily used on center islands of this type. The stream enters Evergreen at about Eleven and one-half mile road and proceeds south through both cities.

THE PROPERTY from this point of entry, north to 12 Mile road, belongs to Southfield and is presently being paved by them. The end solution would involve a proper merging of a boulevard area with this strip of paving.

The stream, known locally as the Evans ditch, would need cleaning, deepening and straightening. Lathrup is presently waiting to hear from Southfield and future action will be based on that city's proposals.

Cost of moving the ditch off Louise Lathrup Kelley-owned property to the center strip was estimated by ALN&M at \$48,000 in early April. The resulting ditch would be 15 feet wide at base, 40 feet wide at top and 8 feet deep.

ALTERNATIVE is an enclosed storm drain costing about \$325,000 say ALN&M. A later engineering study by Southfield's City administrator Robert McNutt estimated the ditching cost at \$17,500. It would be smaller than the \$48,000 ditch.

City attorney Everett Hayes, in a letter to Mayor Cogger, said that if more than 60 feet east of the section line is needed, it would have to come from lots in subdivision 6, fronting on Evergreen and owned by the Louise Lathrup Kelley interests. This could not be done without consent or condemnation proceedings, he said.

School Board To Blacktop Near Schools

SOUTHFIELD — Blacktopping around Lathrup school, cost \$5,123, and around Angling road school, cost \$1,787, will be done by the B. J. Pollard company whose bid was accepted at Monday's board of education meeting. The work is to be completed in 30 days from the signing of the contract.

Also approved was a \$900 increase to cover cost of completing and connecting sewer lines to the main sewer, to empty into a lateral of the Evergreen interceptor, at the Birney school. Sewage is now being hauled away daily at a cost to the school system of about \$100 per day.

The increase, granted to contractor L. H. Johnson is for an additional 280 feet of tile and for labor and equipment involved in laying it. The \$900 is in addition to \$500 allowed Johnson by the board at an earlier meeting.

THE BOARD directed that a letter be sent Southfield city administrator Robert McNutt, requesting that a gravel pathway from John Grace school be installed. A letter from the Southfield Improvement association to the board noted that children are forced to walk in the middle of the road or in ditches at the road sides. They request about 1/4 of pathway from Indian street, north to Shiawassee.

PTA Welcomes Teachers

SOUTHFIELD — Before they met their pupils last week, teachers got welcomed back to school by the Southfield area PTA council at a coffee at Southfield high school. Being greeted by council member Mrs. Melvin C. Mawhinney, 22240 Rougemont, are Lathrup school's new principal, F. Robert Catlin (center) and Daniel Lindow, new fifth grade teacher at Lathrup school. The coffee preceded an all-day meeting between teachers and school administrators the day before 7,350 kindergarten through 12th graders headed for their books.

Sept. 15, 1960

THE BIRMINGHAM (MICH.) ECCENTRIC, 5-E

Scout Troop LC-3 Plans Busy Series Of Fall Activities

LATHRUP — Boy scout troop LC-3 will hold a family night and charter re-registration Sept. 13 at 7:30 p.m. at Lathrup Community Congregational church.

On Sept. 23, 24 and 25, troop members will have a camp-out at Eldridge farm, five miles north of Rochester. All mothers (yes, mothers!) of scouts in the trip are invited to participate. Another trip

is planned for Oct. 8: a canoe trip down the Au Sable river for the weekend.

Beginning Oct. 1, George William Realy will become Scoutmaster, assisted by present Scoutmaster Percy Warner. Al Balliet remains as second assistant leader.

As Michigan's freeway system grows, more and more motorists must learn new driving techniques. The ease of freeway driving can cause a fatigue which reduces accuracy and slows down responses as emergency situations arise.

NEVER BEEN LIVED IN OWNER MUST SACRIFICE IMMEDIATELY Will Accept Reasonable Offer



IMMEDIATE OCCUPANCY

- 4 Bedrooms
- 2 1/2 Baths
- 3 Fireplaces
- Bar-B-Que
- Cherrywood Panelled Family Room with Colonial Plank Flooring and Built-in Bookcases
- All Walk-in Closets
- Electric Fixtures Complete
- Fall-Out Shelter
- Tiled Basement with Shuffle Board
- Large Cedar Closet
- Appliances: Double oven with rotisserie Dishwasher Range and grill
- Face Brick and Aluminum Siding
- Fully Landscaped
- Storms and Screens

LOCATED AT

1095 WILLOW LANE S. W. Corner of Willow Lane & Raynald

OPEN FRI, SAT. & SUN. 9-5

MI 7-0006

COLONIAL WING, WELL LOCATED



COVINGTON PLACE, A Monterey Colonial, nearly new.

4 Bedrooms, 3 1/2 baths. Wonderfully huge family room, the finest of kitchens. Tiled floor on the screened porch.

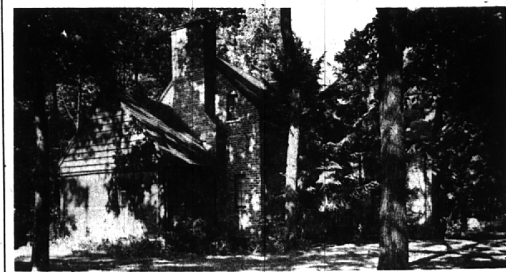
Immediate possession, due to transfer. See this large Bloomfield Village home at your convenience.



BLOOMFIELD VILLAGE, Larger than most 3 bedroom Colonials.

Covered and screened porch. Attractive activities room. 2 1/2 baths. All tacked-down carpeting and draperies.

Now vacant. Truly the best buy in the Subdivision at \$35,950.



5 BEDROOMS WITH 3 1/2 BATHS

This family home also has a 27' living room, library, tremendous recreation room with a fireplace, screened porch, and separate breakfast room.

Near Adams and Derby Schools on a street of comparably handsome homes. The most house for your money at 35,500.

Watt, Manuel & Snyder, Inc.

Realtors

298 South Woodward
Midwest 4-6300

Birmingham, Michigan
Jordan 6-2323