

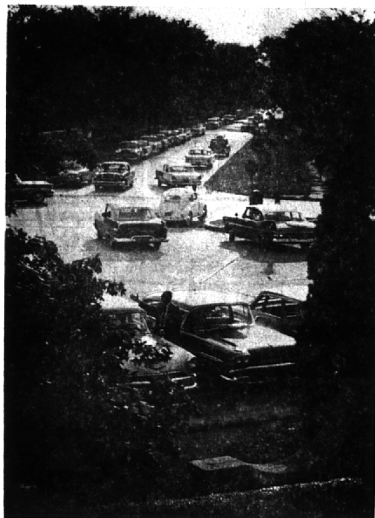
Are you happily wedded to some "cause," some worthwhile activity which, correctly learned about and executed, may improve the lot of human beings? Then you are, indeed, adding flavor and spice and purpose to your life. You need not be the leader in a world-wide movement, either; if you only give some of your time and talent in voluntary community service, you have a "cause."

# The Birmingham Eccentric

BIRMINGHAM, MICHIGAN

Thursday, September 8, 1960

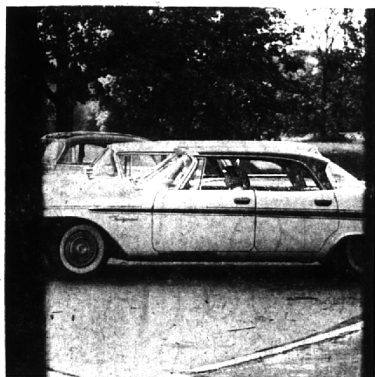
SECTION  
D



Parking on Yosemite . . .



Rushing from train through station . . .



Nothing to do but sit and wait . . .

## Hurrying With The Commuters

Eccentric Photos  
By Marv Stasak

Hurry! That's the word to describe the commuter. He's the man who downs a quick cup of coffee, grabs his brief case, jumps in the car through the door his wife has been holding open patiently, rushes off to the Birmingham railroad station, brushes his wife's cheek with his lips, runs through the station and hops on the train. In the evening, he's the man who leaves the train on the run, dashes through the station, cuts across the parking lot, zig-zags across the street to his car, gives his wife a quick kiss and hurries on home. He's the commuter. Now here's his wife: She's the woman who, with her hair pinned up in curlers and her eyes half-closed, hurriedly

dons a pair of slacks and a blouse; makes that first pot of strong coffee; pulls her husband from his comfortable bed and pours that first cup of black coffee down him; gets the car out of the garage, holds the door open for her husband; fights the traffic to the railroad station; accepts a brush across the cheek from hubby; watches him dash to his train; turns around and hurries back home—and climbs in bed. She's also the woman who, with her hair combed out, her eyes made up and her lips freshly painted, puts a scarf around her head; jumps in the car and takes off in a mad dash for the station to meet hubby on his 5:40. Here, then are the commuter and his wife and this is the way they rush through their day—Unless there's a strike on.



Then dashing through lobby . . .

## Animals in Art Show Bring Noted Artists

The lithic grace of the animal world captured in stone, paint and other media will theme the "Animals in Art" all-professional opening show at the Bloomfield art association. Art-lovers will find a host of exciting names represented, as they browse through the galleries during the invitational exhibit, scheduled for Sept. 11.

The initial show will include a charming horse and hippopotamus by Tex Shevitz and a bear by both Carl Miller and Paul Suttman, all executed in bronze. Suttman is now in Europe studying under Italian sculptor Marino on a Rasmussen foundation grant and is the winner of the top sculpture award at the Salzburg international art academy exhibition in Austria.

DONALD HUBBY'S rooster and Pamela Walsh Stamp's giraffe may be seen as fascinating examples of welded figures. Terra cotta was chosen as a medium by both Betty Davenport Ford and Thomas Brun. The former's anteater and Brun's rhinoceros are certain to detain viewers. Gwena Lux, working in terra cotta, has produced a lovely seal, and a stone ram by Marshall Fredricks and a raccoon in ceramic sculpture by Rosemary Zwick are other highlights of the show. Provocative cats by Carolyn Hall and Fredrick Sluiper are done in water color as is the captivating rooster by Ray de Francisco. Charles Culver also chose water color for his representation of a skunk. Lithographic treatment of a horse will fascinate admirers of Marino Marini and Steven Davides and Joseph Donjan's animal woodcuts

are a real prize. Water colors and drawings by Clifford B. West will also be featured.

SHOW CHAIRMEN are Rocco DiMarco and Karyl Hill have persuaded such artists as Betty Conn, Alfred Van Loon, Chet LaMore and Milton Avery to exhibit their work, as well as artists Arthur Danto and Steve Kline.

Mr. and Mrs. William Dennis are using the animal theme for the decor in the annex and main building where refreshments will be served. Mrs. Marcus Cunningham and Mrs. Harold Drew, social committee co-chairmen, will be assisted by board member, Mrs. E. Leo Vincent.

A membership corner will give guests an opportunity to join the active organization with Mrs. Robert O. Lytle and Mrs. Robert Fisher, membership co-chairmen, assisted by another board member, Mrs. William C. Newberg. Also present will be Albert D. Sallie and Mrs. Robert Bender who have arranged an active year-round educational program, with classes for men, women, and young people beginning Sept. 12, Saturday classes

for children commence Oct. 8.

THE PUBLIC is invited to attend the show which will continue Sept. 12 to Oct. 9. Hours are from 2 to 6 p.m., Saturdays and Sundays. Special tours may be arranged through Mrs. George C. Hill, Jr., 1680 Ponticane, Birmingham, and teachers, students and school groups will find many art objects to interest them. Later events on the BAA calendar are sure to evoke interest. An architectural show is planned for Oct. 16 to Nov. 20, followed later by a members' exhibit.

A good driver is one who assumes that any driver he meets may be a bad one. He anticipates the actions of others. He knows that this helps prepare him to avert an accident if the other fellow does make a wrong traffic move.

## My Neighbors



"Do you treat everyone who comes in here like a crook?"

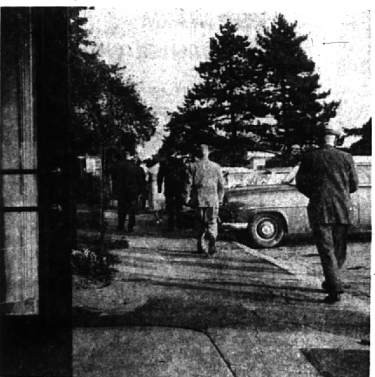
**EXPERT SERVICE**  
**PORTABLE TV**  
FAST DEPENDABLE  
**Birmingham Electronics**  
141 E. Maple MI 6-8440

**Hollywood Adjustable WALKER**  
Easy Terms  
**RENTAL & SALES**  
• HOSPITAL BEDS  
• BED SIDES  
• WHEEL CHAIRS  
• WALKERS  
• CRUTCHES  
**MICHIGAN FIRST AID**  
Invalid needs—sick room supplies  
LI 2-3027 JO 4-6847  
1621 S. Woodward, R. O.  
3 doors north of 16 Mile

**SALE**  
**BALDWIN**  
PIANOS • ORGANS  
Selected Baldwin Pianos and Organs used this season at Bayview Assembly, Petosky, Michigan, together with display instruments from Michigan County Fairs and Music Camps.  
**Substantial Savings**  
• No down payment  
• New Guarantee  
• New bench included  
• Complimentary Lessons  
• Liberal Trade Allowance  
• We Finance and Service our sales!  
115 So. Woodward MI 7-1177  
**Smiley Bros.** Daily—Sat. 9:30-5:30 Fri. 9:30-9:00

you are  
cordially invited to  
**tea**  
and an  
informal showing  
of our exciting new  
**fall collection**  
of  
**designer fashions**  
friday, september 9, 1960  
one to four p.m.  
open friday evening  
until 9:00  
**Davidson's**  
Free Parking Adjoining Store

created from a paris  
original in imported  
black worsted  
faile. Ours alone \$125.  
from a collection  
\$50 to \$310  
**Davidson's**  
Woodward Avenue • Birmingham, Michigan



Running down sidewalk . . .



And getting into the waiting car.