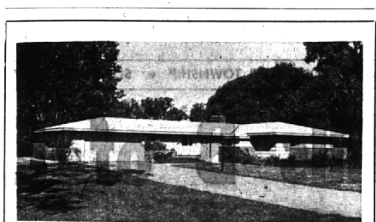


Children Visit Park

Kensington metropolitan park yesterday for a field trip to study plant and animal life along a "nature trail" of the park.



Modern Ranch Home 33,900
3406 Devon Brook
Bloomfield Hills

OUTSTANDING FEATURES:
Fully carpeted and draped, 3 large bedrooms, 2 1/2 baths, large kitchen with built-ins, family room, large patio, beautifully landscaped on one acre wooded lot, paved streets, immediate occupancy.

CALL FE 5-2934



12 Acres of
FINE NURSERY STOCK
Shrubs—Evergreens—Lawns
LARGE SHADE TREES

WOODY ACRES NURSERY
In Birmingham

Landscape Plans Available

MI 4-8100



BLOOMFIELD VILLAGE, this new large four-bedroom, 2 1/2 bath home is open at 2572 Covington Place, two blocks north of Maple near Cranbrook. It has an activities room and a separate recreation room with fireplace in the basement. It is completely equipped, including a garage door operator, dishwasher and oven fan.

WE HAVE LOTS IN THIS AREA FOR RANCHES, COLONIALS OR BI-LEVELS
KASSABIAN BUILDERS, 474 N. WOODWARD MI 4-1200

Bond Vote

(Continued from 1-E)

would accommodate 600. The planned addition to the present high school, estimated at \$1,029,100, would increase its capacity to 1100 pupils. It is presently overcrowded with 739 students.

Cost of the new elementary school, which would be built on property now owned by the school district on Wing Lake road, south of Maple, is figured at \$555,300. This school would accommodate 350 pupils.

Additions at three existing elementary schools would add a 650-pupil capacity to the school district. Cost of the three one-unit additions would run approximately \$500,000.

A figure of \$440,000 has been set aside in the proposed bond issue for site purchases.

THE BOARD feels sites "should be acquired while still available and at a reasonable cost." Their proposal includes sites for a second high school, a second and third junior high school and three elementary schools to be built in the future. This purchase would give the school district sites for all schools that will eventually be needed in the district, according to the MSU survey.

Twenty thousand dollars has been earmarked for expenses incidental to issuance of the bonds. The amount needed to cover the total building-site purchase program is \$4,235,000. However, the board has a \$100,000 surplus left from past bond issues, which is being applied to lower the bond issue to \$4,135,000.

Clarkson Promises Tax Report

SOUTHFIELD—"A most revealing report" will be submitted to the Michigan state legislature offering possible solutions to the state's tax dilemma, Representative S. James Clarkson (D), of Southfield, stated this week.

Clarkson, candidate for re-election to the legislature from the fourth district, made the announcement following a three-day session in Pittsburgh. As vice-chairman of the state legislature's interim study committee on land value or differential taxation, Clarkson attended with other committee members. Clarkson's Republican opposition in the fourth district is Raymond L. Baker, of Berkley.

Meeting with the Mayor of Pittsburgh and other Pennsylvania officials, Clarkson and members of the committee heard business and economic experts praise the Pittsburgh graded tax form of taxation. Since 1925, Pittsburgh real estate taxes have fixed building's tax rate at half that levied on land.

THE RATIO in Pittsburgh for 1959, for example, placed the tax rate at \$37 per \$1,000 valuation on land and \$18.50 per \$1,000 on buildings.

The system "discourages holding of vacant land for speculation and provides an incentive for building improvements," according to Lawrence.

Pennsylvania has adopted legislation enabling any of its third-class cities to tax under the graded or differential tax system. A similar law was introduced in the Michigan state legislature in February by Clarkson and Rep. Harry A. DeMaio.

"The system is particularly beneficial to home owners in the distribution of the tax burden," Gov. Lawrence has said.

Hickory Grove PTA Initiates Fall Season

BLOOMFIELD HILLS—The Hickory grove school PTA will meet tonight for the first meeting of the fall season, at 8 p.m. The school is located at 2500 Lakser road, Bloomfield Hills.

Dr. David W. Wells, director of mathematics education for the Oakland county board of education, will be the speaker. He will discuss the new concept in making arithmetic more meaningful and more interesting to the elementary grades. Questions will be encouraged.

Refreshments will be served with Mrs. Ward Ross as chairman. School calendars will be available to all members.

Home Burglarized Of Cash, Jewelry In Beverly Hills

BEVERLY HILLS—The home of L. Graham Munger, 17151 Kinross, was broken into and \$200 in cash, as well as jewelry and other items stolen. The theft was reported at 10:12 p.m. last Thursday.

Police believe the burglar wore gloves. He entered the home by breaking glass in a back door. Jewelry included two woman's watches, valued at \$100 and \$75; one man's watch worth \$75; three bottles of whisky, a box of cigars and 200 four-cent stamps. Cash stolen was in new bills, denominations of 20, 10 and five dollars.

Rec Commission Has Openings In Some Classes

LATHRUP—The Lathrup recreation commission program announces openings are still available in several classes.

Children from the fourth-seventh grades who are interested in joining beginning or intermediate French and Spanish classes can register by phone or mail with Mrs. Donald Mandel, 28686 Spring Arbor, Southfield. Register classes will be held Thursday and intermediate classes Friday afternoons at 3:45 p.m. at Lathrup school, as will commence Oct. 17 at North-

brook school. Both adult classes are held at 8:30 p.m.

The boys' sports program is held Tuesday afternoons at 3:45 p.m. at Lathrup school. Registrations for classes can be made at the school at class time, with the exception of the foreign language program for children.

LATIN DANCING for teenagers will begin Oct. 13 at Birney and adults square dancing for adults will begin Oct. 12 at Birney and adults square dancing will commence Oct. 17 at North-

The shortest distance between buyer and seller... employer and employee... landlord and tenant... is a West Ad.

The plans call for a line to run down Wellington road from Midvale, branching off to include Eastbrook and Westbrook roads. The meeting concluded with a report by Treasurer Robert Day.

Council Gets Plans For Proposed Lines From Gas Company

WOOD CREEK FARMS—The council acknowledged receipt, at last week's meeting, of plans for proposed gas lines to be installed in the future by Consumers power company.



ALWAYS IN GOOD TASTE!

See this sparkling NEW MONTEREY COLONIAL close to Midvale grade and Seaholm Hi. with 4 twin-sized bedrooms, 2 1/2 baths and a kitchen with every built in. Full-size dining room, 23 ft. living room. The spacious paneled family room will be the envy of your friends with the attractive fireplace & glass sliding doors. The front yard is sodded and the shrubbery planted. Open Daily & Sunday from noon 'til dusk at 733 SOUTH GLENHURST between Maple & Lincoln. \$39,900.



APPEALING

all brick ranch with an Early American decor. 3 nice bedrooms, 2 full baths and an outstanding family room. Bubbling fountain highlights the sculptured landscaping on this tree-studded site. Opportunity here—transferred out-of-town owner wants action. IMMACULATE. \$33,500.

HOMESITES

OFFICES 'TILL 9 P. M.

ACREAGE

COMMERCIAL

HALL & YOUNG

REALTORS

BIRMINGHAM OFFICE

BLOOMFIELD OFFICE

MI 6-7900

JO 6-7900

MA 6-2595

JO 4-5900

345 S. Woodward Ave. (next to Bloomfield Theatre)

4114 W. Maple Road (Just West of Telegraph)

COLONIALS FOR THE HOLY NAME OR QUARTON FAMILIES.



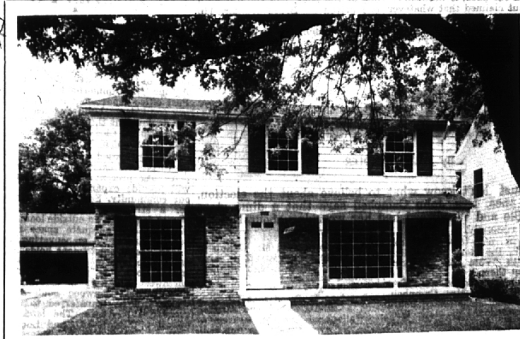
Here is a Farm Colonial that has just been painted. One of the best features in this home is the family breakfast room and enormous cupboards. There is a library, also a porch, and a fenced yard.

Located on Suffield Road, priced to sell quickly at \$37,500.



SUPERLATIVE is the word for this Pine Street home. Colonial decorator's interior has a paneled library. There are 3 bedrooms, master dressing room, 2 1/2 baths. Fine quality carpeting is included. The landscaping that completes the site is also superior!

Superlative value at \$33,900.



NEW... Sparkling New!... On Lakeview. 4 spacious bedrooms, largest closets. 2 1/2 bathrooms. Super family room, fireplace, beamed ceiling. Mother's new kitchen with all built-ins. Ideal floor plan.

\$31,400 and easy to buy

If you have read this far, we want to talk to you about this family home.

Watt, Manuel & Snyder, Inc.
Realtors

298 South Woodward
Midwest 4-6300

Birmingham, Michigan
Jordan 6-2323