

Colonial Furniture

PINE TIQUE

and
Those Heavenly
CARPETS by
Lee's



Home Service

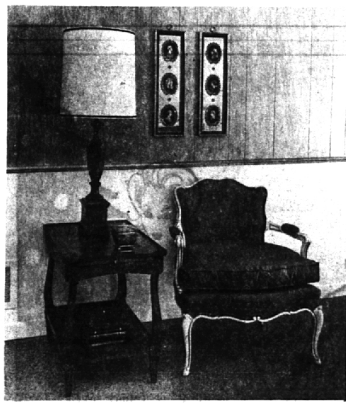
call
OLive 1-8166-7

Open
Friday Evenings
'til 9

828 No. Main
Rochester

Whites

AT LOWERY FURNITURE STUDIOS
IN BIRMINGHAM



Designs that never grow old . . . truly
ageless, dignified elegance.
Easy to live with and a joy to own.

742 N. Woodward MI 6-7660
(7 Blocks north of Maple)

SAVE SATURDAY, NOV. 26th

FOR THE BISSELL ELECTRIC

"Clean Sweep" PARTY

JOIN US FOR FREE GIFTS!
SPECIAL PRIZES!
REFRESHMENTS! FUN!
FREE BALLOONS!
FOR THE KIDS!

ask the Bissell Home Economist
to show you

THE BISSELL
ELECTRIC
SCRUB MASTER

Sudsa's, Scrubs and
Vacuum dries your floors
—leaves them cleaner,
more sparkling than
ever before. See the
demonstration.

Scrub
Master plus
22 ounce
Bissell Scott's
Wax Remover
just
\$3.95

and learn how
you can have
both...and save

THE BISSELL
ELECTRIC
SWEEP MASTER

Amazing new lightweight
vacuum that vacuum sweeps
bare floors—vacuum cleans
sugs and carpets. Be sure
to see it demonstrated.
Complete only
\$34.95

THE BISSELL
ELECTRIC 2-IN-1
COMBINATION

all the advantages of the
Scrub Master and the
Sweep Master with just
one interchangeable
power unit.
Complete just \$59.95

FEDERAL HARDWARE and SUPPLY
SOUTHFIELD AT 12 MILE RD.
OPEN EVERY EVENING—SUNDAYS 10-4

DOWN TO EARTH

2 Types of Gardeners Get Same Satisfaction

By ALICE WESSELS BURLINGAME

Special Writer for The Birmingham Eccestric

There are two kinds of gardeners. Those who "play by ear" and take it easy, have made their garden plan for easy maintenance and pretty well know the answers on plant selection to assure seasonal results.

My membership is in this club because I don't believe in cutting perennials down after flowering before the frost. Their awkward spikes will hold the snow drifts which act as an electric blanket to prevent a ratio of winter kill. The second category of gardener has lots of good points. He has to have his garden made with square corners. Every area must be neat as a pin. Disorderly discards to his ear.

As this person works in his garden, he gets the same kind of therapy from gardening as the first named person. He is restless, restless and is always changing the contents of various flower-beds.

THE TWO APPROACHES to gardening must be understood as being different in the garden rather than the outward results in

the garden. This outlet of working with plants is a way of life which lets off steam generated before the worker goes out the back door. We must not think that a physical handicap keeps a person from doing some part of working with plant material. The therapy through horticulture offers a picture at this point to help relieve motivation in the physical and mental fields of expression.

BE CONSERVATIVE in your use of pruning shears this time of year. There will be a few branches of evergreens which have been waiting just for you to trim for Christmas but shrubs should not be touched now until after their flowering cycle next spring. Trees can be pruned at a time of year. Somehow it doesn't seem such a crime to trim off a branch of a tree after the leaves have fallen. You can seal the cuts easily with tree wounding dressing which comes in a spray can.

ONE OF the finest treats which will await you if you are motoring through Denmark will be a visit to the William S. Knudsen children's home near Skorpion, in northern Jutland, Denmark. This home was created as a tribute to the friends and family of general Knudsen, after his death. This plan was spearheaded by Mrs. Alfred Gram of Birmingham.

Here on 10 acres of land you see

Year-Around Fashions Good Idea, Writer Says

By RUTH VOGT

Special Writer

Recent rumors seeping out from the fashion world that this industry would like to wipe spring right off our calendars. People who design clothes insist that this season sometimes doesn't even show up and if it does make an appearance, it doesn't last long.

With quickening pulse this interested reader pondered the heartening words that fashion folks were anxious to create clothes that can be worn the year-around. (If this sensible trend continues, the woman might someday see the year when her dresses, hats, coats and shoes would not go out of style after one short season.)

KEEPING presentable things on your back can prove embarrassing at times, especially for the individual, who seldom studies "what's being worn and why." Take what happened at last Saturday's wedding and reception. The invitation included the whole family. This was treasured because none of them had ever seen a big wedding. Problems loomed immediately, however.

Sister needs a dress—but I was thinking of getting her one for Christmas. And brother can't wear his shoes, he's worn to school; they're all scuffed. But adding that the nine-year-old could wear her recital dress and Dad should get his suit cleaned and pressed, things were under control.

NOT HAVING scanned the fashion pages for a few seasons I happily labored under the idea that a six-year-old, perfectly good lace creation would do very well for me. If I shake out and brush up my little old tired squirrel cape and keep my purse over the worn spots in front, I should look quite presentable," was spoken in hope.

Some hopes are not well founded. At the church? There wasn't time to see much of how others were dressed. At the reception in a huge ball afterwards? Quite!

THE CHILDREN did me proud. So did their father. With their freshly cut hair and scrubbed and combed to the hills, people nodded and a few whispered, "My what a nice-looking family you do have."

Happily, I agreed. When the line formed just inside the hall for the guests to file down to offer their congratulations, I then realized, to my horror, that "little lace barcinia" picked up a half dozen years ago weren't being worn this season!

Waiting our turn to fall into line the oldest girl whispered: "Mom, why don't you just carry your cape? The fur looks like it's been caught in too many rain storms." I took it off. I put it back on immediately. Somehow the bustle in back seemed too conspicuous. (There wasn't another bustle around.)

"Sort of stand close to Mommie, huh?" was asked of the three of us by a young girl who was slowly milling toward the bride and groom. They hadly obliged and as soon as we congratulated everyone, (I always ignorantly include the bride too) we lost no time in finding our name cards at the long table.

WHAT IS THE best method to use when one is found in a tight spot?

Many articles on this subject have insisted that the only thing to do is to forget yourself and concentrate on others. Thank heavens there were two most interesting elderly people sitting across from us. After introducing everyone, I started in with just a few polite questions of what they did now since they had retired.

Luck was with us. No two more fascinating 70-year-olds could have been found. By the time the dessert was served, all thoughts of having worn an outdated dress to quite an elegant wedding, disappeared.

"MAY I HAVE the pleasure of the second Polka?" the white-haired gentleman inquired. "Thank you. I will be thrilled."

low, attractively designed home for approximately 50 children who need shelter. They attend school and in this colorful setting regain their health and confidence. The home has a board of directors of leading Danish citizens. Queen Ingrid is the protector of the Save the Children Foundation in Denmark and her photograph is prominent in the lobby.

OUR MRS. ALFRED Gram is the godmother of the William S. Knudsen Home and is endorsed by the staff and children. The Robert Vanderkloot family visited there in 1955 when Bob, Jr., was the speaker representing youth at the famous Fourth of July celebration. By the way, close to the home is Rebild national park where every Fourth of July, Independence Day is celebrated in speech and community singing by Americans of Danish ancestry who are in the area.

Thousands attend the occasion. The whole idea began in 1909 when Dr. Max Henius of Chicago

interested many Danish Americans in buying this park and giving it to the Danish government to be used each year as a center of good will celebration. When we visited there the huge natural amphitheater was covered with vivid purple myrtle, accented with dark green evergreens.

IT IS EASY to visualize a sunny Fourth of July with thousands gathering as they find their places around the natural bowl with colorful huge state flags representing every area of our country. The United States air force band plays. There is a hush, the King and Queen come to the platform. The program begins with a famous soloist and the famous Rebild Saga is repeated another year.

Afterward, the guests leave for Anlborg to the Kliden gardens for a banquet. Many inns and motels are in the area to assure hospitality for the guests. Rebild park is 125 miles from Copenhagen and three hours by ferry.

SCOTTSDALE, ARIZONA
If you plan to visit Scottsdale this winter we may offer two suggestions—
1. Make Reservations Now
2. Contact us for information on real-estate investment
WESTERN LAND & INVESTMENT CO.
30 Pine Plaza Scottsdale, Arizona
WHittier 6-2761
Jennings Morse—Broker

IMPORTED CARS
of
Oakland County
"Service Specialists for Imported Cars"
WESTERN LAND & INVESTMENT CO.
Car. W. Maple and Orchard Lake Rd.
MA 6-2491

Play Silent Night in 5 minutes
ON THE NEW LOWREY Holiday Duo
LOWREY ORGANS
Models from \$385 to \$2995
No lessons, no practice. Even if you can't read a note, you can sit down at this new Lowrey chord organ and play the familiar melodies you love. And you won't outgrow this new Lowrey because it's really two organs in one—designed to meet the musical needs of the whole family.
COME IN OR CALL US TODAY
FREE HOME TRIAL
EASY BUDGET PLAN
LOWREY ORGANS MODELS FROM \$395 to \$2995
Gallagher Music Co.
734 S. WASHINGTON
ROYAL OAK MI 5-1660
18 E. HURON
PONTIAC MI 4-5666
Open Mon., Thurs. & Fri. Eves. Open Monday and Friday Eves. All Stores in Grosse Pointe and Detroit

Effective December 1st

3% interest paid on ALL savings

DEPOSITS RECEIVED BY DECEMBER 10th
WILL EARN INTEREST
FROM DECEMBER 1st

DIRECTORS:

- F. Douglas Campbell, Vice President and Cashier, Birmingham-Bloomfield Bank
- G. Allen Harlan, President, Harlan Electric Company
- Merritt D. Hill, Vice President, Ford Motor Company and General Manager of its Tractor Division
- Stephen C. Miller, Partner, C. M. Harmon Company
- Donald H. Parsons, Partner, Emery, Parsons and Bahr, Birmingham law firm
- W. Calvin Patterson, Vice President, Michigan Bell Telephone Company
- Kenneth C. Tiffany, Vice-President, Finance, Massey-Ferguson, Limited
- Robert G. Vanderkloot, President, Detroit Color-type Company
- Charles D. White, President, Birmingham-Bloomfield Bank
- G. Bretnell Williams, Vice President, Cunningham-Limp Company



BIRMINGHAM-BLOOMFIELD BANK

250 MARTIN ST. (1/2 Block East of Post Office) BIRMINGHAM • Midwest 7-2500



OPEN: MONDAYS THRU THURSDAYS—9:30 A.M. to 4 P.M. FRIDAYS—9:30 A.M. to 6 P.M. SATURDAYS—9 A.M. to NOON
MEMBER FEDERAL DEPOSIT INSURANCE CORPORATION