

Yuletide Concerts
planned by churches. See page 6-B.
Belafonte Sing
then visits Cranbrook. See page 1-C.

Plan Ahead
for city's central business district. See page 1-D.

- Amusements 8-C
Rite of Birmingham 2-A
Business Briefs 7-B
Campus News 7-C
Church 8-D
County Column 7-B
Down to Earth 8-C
Editorial 8-D
Nature Now 8-D
Obituaries 8-C
Real Estate 8-D
Round the Towns 8-E
Sports 8-E
Theaters 8-C
Woman's News 4, 5-A
Youth News 8-D

This and That
by George R. Averill

Portions of the recent election remind me of the time when Francis William Jennings Bryan, three times unsuccessful Democratic candidate for the Presidency, was scheduled to speak in a certain midwest village...

ON ANOTHER OCCASION a Democrat was making a speech but constantly was heckled by an old man in the audience. Unable to stand it any longer, the candidate exclaimed: "Say, Mister, what political party do you belong to?"

"Why are you a Republican, anyway?" again asked the speaker. "Because my pappy was a Republican and so was his pappy before him," was the answer.

"Our word 'education' is a misnomer. We are not educating; we are domesticating. To educate is to develop latent capabilities so that one may be strong to overcome the hampering obstacles of prejudice and environment in reaching out for truth.

ONCE A YEAR, everyone in Altadena, Calif., pitches in to transform their town into a living Christmas card—pictured in this issue, the Christmas Tree Lane of...

Call To This Number MI 4-1100

is all you need to place a result bringing Birmingham Eccentric Classified. Call Today!

It has been said that real happiness is a sort of by-product of living the Right Life... the pursuit of happiness, with the dominant objective of finding it and wrapping your arms around it, is impossible to achieve.

Effect of Hourly Traffic Court to Be Resumed

By KEN WEAVER News Editor
Birmingham's teenage traffic court may be resumed next month, it was disclosed this week.

Residents to Observe Thanksgiving Day

Birmingham residents Thursday will observe the holiday that began 339 years ago.

Article Compares Conant's Report With Our Schools

How well do Birmingham area public high schools measure up to the best educational standards practiced in other parts of the country?

Children, Christmas In December Suburbia

Distinguished novelist Shirley Jackson gives a hilarious account of writing a play for her "bad" children and their friends, to lead off the gaily decorated December issue of SUBURBIA TODAY.

Here's Your Chance To Shop Alone, Men

Christmas is coming to Birmingham. It will begin with the ninth annual Men's Night from 7 to 10 p.m., Monday, Dec. 5.

MEN'S NIGHT is a traditional observance, in which only men are allowed in the local stores.

The Retail division has written a letter to Mayor Florence Willett asking her to greet Santa Claus upon his arrival in Birmingham.

38 PAGES NOVEMBER 23, 1960 Serving the Citizens of Michigan's Finest Suburban Residential Area

Effect of Hourly Traffic Court to Be Resumed

Probate court under Judge Moore, was originated Oct. 15, 1957, and heard its first cases on Oct. 15 that year.

Life in the Suburbs Suits Two Newcomers

By JULIE CANDLER Staff Writer
Mr. and Mrs. Swan, of Quanton lake, Birmingham? They moved here from New York.

Fall Kills Youth, 19, At U of M

The 19-year-old son of a prominent Birmingham area man was killed last night in a fall from a fraternity house at 1 a.m. Saturday in Ann Arbor.

Mayor Willett Proclaims Week For Leader Dogs

Birmingham Mayor Florence H. Willett today proclaimed Dec. 4-10 as Leader Dog week.

Finance Main Question In Hills Sewer Issue

By LES LANGLOIS Staff Writer
When Bloomfield Hills voters go to the polls Dec. 19 for the special election on the sewer system bond issue, they will be deciding not only the necessity of the sewer system but on the method of finance.

Thursday Rubbish Pick-up on Friday

Wondering about your rubbish pick-up because of the holiday this week? In Birmingham the Thursday pick-up will be made first thing Friday morning, and the normal Friday collection will be made later in the day.

one-half day session from 9 a.m. to 12 noon once a month on Thursdays.

Right from the start, Mr. and Mrs. Swan have been the most popular newcomers ever to arrive in Birmingham's suburbia.

NO SOONER had they begun their serene gliding over Quanton's waters, than people began looking to visit the handsome couple.

Because there would not be a quorum present, Birmingham city commissioners will not meet next Monday.

Indications of internal hemming-and-sewing pressure began Sunday morning. At 4 p.m. Sunday surgery was performed, and he died 12 hours later.

By "OUR OWN way" the mayor referred to the city commission suggested method of finance. Namely, a \$1,500,000 issue of general obligation bonds to defray the cost of installing the city sewer system.

THUS, PROPERTY assessed at \$10 million, this estimated figure is based on the entire \$1,600,000 in bonds being issued at the same time.

FREE - FREE! When renewing your subscription, arrange to call at our office for a complimentary copy of our Anniversary Edition.

privileges from 1 to 23 days. If jurors feel a case is usually serious, they may recommend that the Michigan secretary of state's office be petitioned for a longer suspension of the driver's license.

Swans on Quanton Lake are pampered at mealtime with tempting tidbits contributed by lakeside residents like Westwood neighbors Mary Beth Scriven, 4, and John Oglesby, 9.

ALICE RIEBLING has been making a serene stroll in the park just to their suburban surroundings. She had extra time to watch through her front window because an auto accident injury has kept her household recently.

IT DIDN'T take them long to elect to do it, it will be done the most efficiently, economically and equitably.

Watching workmen plant one of the new maple trees on Maple street in Birmingham are Harvey Rasch, left, and Commissioner William E. Roberts.

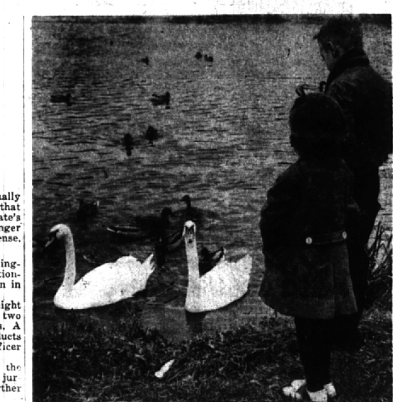
It's Appropriate: Maples for Maple
Planting of the trees came through the urging of City Commissioner William E. Roberts, who long has been an advocate of bigger, stronger trees in the downtown area.

RASCH SAID the department has had difficulty getting other trees, one and a half to one and three-quarters in diameter, to grow. They were too small and thus would not survive.

COSTING ABOUT \$400, the maples were purchased from an area nursery. Rasch said money was available in the forestry budget, so no new appropriation



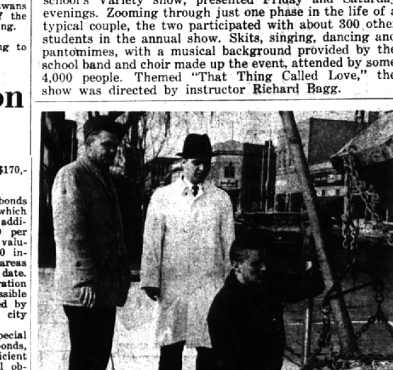
The Eccentric's Top Suburban West TEN CENTS



Swans on Quanton Lake are pampered at mealtime with tempting tidbits contributed by lakeside residents like Westwood neighbors Mary Beth Scriven, 4, and John Oglesby, 9.



ALICE RIEBLING has been making a serene stroll in the park just to their suburban surroundings. She had extra time to watch through her front window because an auto accident injury has kept her household recently.



Watching workmen plant one of the new maple trees on Maple street in Birmingham are Harvey Rasch, left, and Commissioner William E. Roberts.

It's Appropriate: Maples for Maple
Planting of the trees came through the urging of City Commissioner William E. Roberts, who long has been an advocate of bigger, stronger trees in the downtown area.