

You hope in vain if you desire to improve yourself in based chiefly upon wishful thinking. You remember the old saying: "God helps those who only help themselves." The best others can do for you is to inspire you, to perhaps only point out for you possible routes to take for improvement of your situation in life. You never can "develop your muscles" except by your own exercises.

The Birmingham Eccentric

BIRMINGHAM, MICHIGAN

Thursday, November 17, 1960

SECTION
D



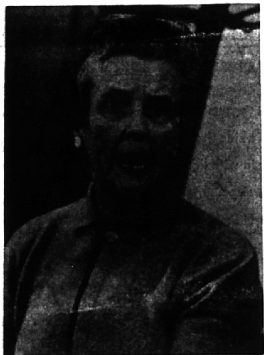
If he wins, you can expect . . .



So what? I'll vote for him next . . .



Now listen, Joe . . .



Pass the sugar, please . . .

All It Takes Is Telephoto Lens, Quiet Cameraman

It was election night and all was tension and seriousness at Republican headquarters in Birmingham.

Party workers registered returns on the big black score board as they poured in from the various communities and precincts.

Candidates, workers and interested citizenry sat around in chairs and stood in small clusters watching the continuous reports on television. Occasionally someone wandered off to grab a sandwich and a cup of coffee, returning a moment later to resume the watch.

Some people just sat, watched and listened. Others discussed election trends with their colleagues and friends.

There was confusion and there was sadness. There was order and there was gladness.

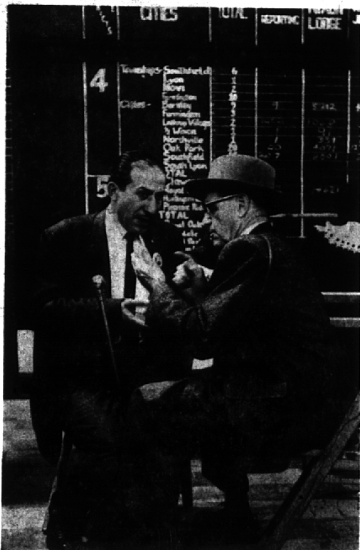
For this was election night 1960.

And in the midst of this excitement stood a photographer candidly snapping pictures.

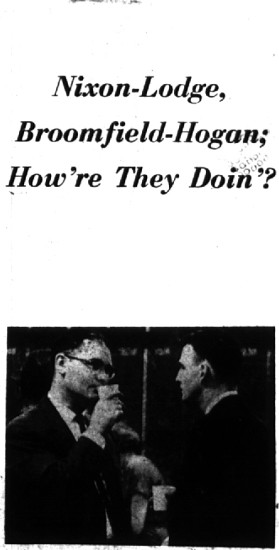
Staff Photos
By Marv Stasak

Our Thanksgiving Issue Will Be Out

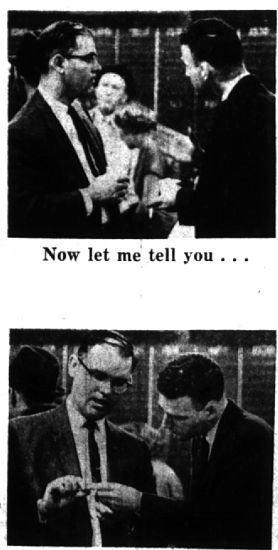
Wed., Nov. 23;
Please Get Your
Copy in Early;
Final Deadline:
Monday, Nov. 21.



Now you take . . .



My candidate promises . . .



Now let me tell you . . .

Let me see that card . . .

Nixon-Lodge, Broomfield-Hogan; How're They Doin'?

PEOPLE'S COLUMN

Thinks Schools Should Equal Other Standards

To the Editor:
Whoa here! Mr. William Lyman can't, in a quick short letter to the editor, state such wonderful thoughts as he did last week and creep out of our educational picture.

He was brave enough to voice the opinion that a truly dedicated career teacher is not so much interested in automatic pay raises and tenure as he is over such items as:

opportunity to participate in curriculum planning, and where the parents take a real interest in both the school, pupil and teacher, and, lastly, "concern over the load they must carry in numbers of children they must somehow teach every thing to" well.

Shouldn't these practical suggestions be discussed at length at the state meetings, at the local ones and between us "interested papas and mommas"? They should.

A GOOD educational program. Enlightened administrative program and leadership and policies thrown in. And they are also looking for a system where they'll have

OUR HOMES are lovely. So are our cars' roads. Now, all we must do is to concentrate, quite heavily, on getting our schools, every last one of 'em, public or private, up

Jaycees Will Place Muscular Dystrophy Cannisters Locally

Cannisters for contributions to the muscular dystrophy drive will be placed in Birmingham stores by the Junior Chamber of Commerce on Saturday. They will remain in the stores for the duration of the fund-raising campaign.

The drive began Tuesday. A door-to-door campaign will be held Nov. 29 from 7 to 9 p.m.

Co-chairmen of the local drive are Mrs. William T. Collins, Jr. and Mrs. Peter H. Iversen. Funds raised will be used for medical research.

to the high standards of our homes, cars and roads.
Thank you, Mr. Lyman, for your words.
MRS. B. E. VOGT
6922 E. Millerway
Birmingham

14 Local Men Get 32nd Degree In Masonic Rite

More than 200 Masons from 11 southeastern counties in Michigan received the 32nd degree of Scottish rite last week at Detroit's Masonic Temple. Fourteen are local men.

Birmingham area Masons who received the 32nd degree are Norman B. Chamberlin, Lucian F. Davis, Gordon P. Deneau, Donald J. Gilluly, William E. Gross, Jr., John E. Holland, William D. Innes, Robert G. McVittie, Ernest W. Montgomery, Frederick M. Oliver and Tom A. Weir.

Bloomfield Hills area Masons who received the 32nd degree are: W. Don Gallentine, Terrance R.

Jackson and Harold C. MacDonald.

BIRMINGHAM AREA Scottish rite Masons who participated in the degree work or on committee assignments during the reunion included Ralph W. Moore, George S. Duffenbaugh, J. Robert Phelps, Frederick M. Ross, Guy C. Powell, Joseph L. Paldi, J. R. McNaughton, Jr., Ira Wilson III, Robert E. Lytle, Jack W. Finley, Jr., Harry M. Cook and Douglass Witters, all of Birmingham.

Bloomfield Hills Scottish rite Masons who participated in degree work or served on committees were Charles H. Patterson, W. Barclay Deyo, Howard A. Hurst, Fred Collins, William W. Merrill and Robert Teschke, all of Bloomfield Hills.

Michigan's deepest inland body of water is Torch lake in Antrim, Charlevoix and Kalkaska counties. Maximum depth of the lake is 285 feet. Superior is the deepest of the Great Lakes, with soundings of more than 1800 feet recorded.



(Mary Lou) (Naomi)

CALL MI 7-0078

Open Evenings for Appointment

1 Block North of Maple, Between Hunter Blvd. and Woodward

Introducing

MARY LOU
and
NAOMI

Foremost Hair stylists of Pleasant Ridge who have now joined our staff at . . .

Christy's
Suburban Hair Styles
395 HAMILTON,
BIRMINGHAM

Comfort for the Ladies

there's nothing
so quaint as a

Boston Rocker

. . . and these are
exceptional values!



One of these decorative, comfortable Boston Rockers will completely change the character of your living room, den, bedroom or kitchen. Decorators agree that no other chair has a more distinctive "favor" as an accent piece.

You can match this chair with other Colonial furniture . . . or mix it with moderns to achieve an unusual effect. Made from selected hardwoods . . . expertly crafted by the country's largest manufacturer of Colonial chairs. Comes in decorated or plain finishes.

COME SEE THEM TODAY!

Salem Maple Finish

\$29.50

Decorated Gold on Black \$32.50
As Illustrated

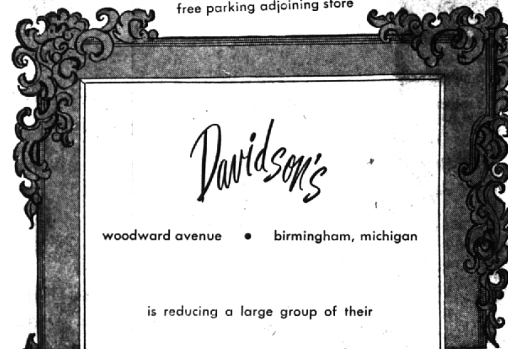
All The Credit You Need—Easy to Park, Just Drive Up
Open Monday, Thursday & Friday 'Til 8 P.M.



HI-WAY FURNITURE MART
1532 WOODWARD AVE., BIRMINGHAM, MICH.

4 BLOCKS N. OF 14 MI. RD. Midwest 4-1410

free parking adjoining store



woodward avenue • birmingham, michigan

is reducing a large group of their

DESIGNER CLOTHES

20% to 40% off

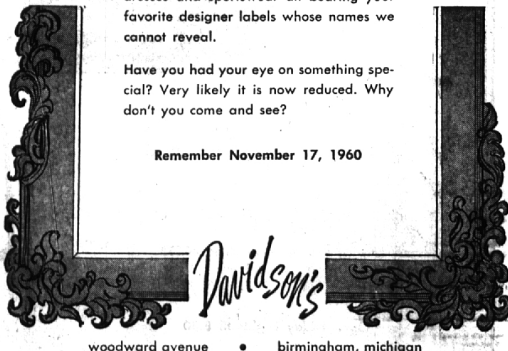
quality
since
1925

open
friday
evenings

Included are a group of suits; plus coats, dresses and sportswear all bearing your favorite designer labels whose names we cannot reveal.

Have you had your eye on something special? Very likely it is now reduced. Why don't you come and see?

Remember November 17, 1960



woodward avenue • birmingham, michigan