

Dateline Derby

Intellects Win Again At Derby

By BRENDA DRUMM

Once again Derby's intellectual group, the National Junior Honor Society, has inducted deserving students as new members.

In honor of the occasion an induction assembly was held and parents of the new members were invited.

The Derby Junior high school band, under the direction of Mr. Jones, opened the program with "Grand Union overture."

Tim Maker, president of NJHS, welcomed parents and students and introduced the first of several speakers on the qualities necessary for membership. Scholarship was spoken of by Betsy Rodgers, citizenship by Pat Loveland, leadership by Sally Rush, character by Lynn Heers, and service by Barb Maxson.

After Vicki Kye introduced the new members and the ninth grade choir, directed by Miss Strickling, sang, the new members took the NJHS pledge led by Anne Whitney. To complete the ceremony, Mr. Burchyett welcomed the new members and presented pins and certificates to them.

The band played "An American Scene" to make an appropriate ending to the assembly. After the program a reception was held for the new members and guests.

To quote Mr. Burchyett: "The NJHS assembly presented this year at Derby was one of the finest I have ever seen, and each member

of the society and sponsors Mrs. Pierce and Miss Switzer, should be commended for a very fine presentation."

Members recently inducted are: (in the eighth grade) Katrina Bender, Thomas Conrad, Anne Darling, Carolyn Emmett, Terry Fournier, Linda Harvie, Robert Heavener, Gary King, Marlin MacCleary, Clarence Nichols, Richard Nuffer, William Patton, Marshall Rissard, Robert Swanson, Kathryn Schwarze, Judith Steere, Robert Swanson, and Michael Wilkinson. The ninth graders were: Jane Beneke, Robert Brown, Brenda Drumm, Barbara Fish, Joan Eastman, Elizabeth George, Charles Holtz, Lillian Jackson, Thomas Kennedy, Linda Markle, Michael McKenzie, Marilyn Mitchell, Susan Monroe, Nancy Putag, David Sanders, Linda Scott, John Slater, Gretchen VanSickle, and Scott Woodison.

Our most capable master of ceremonies was Jerry Lohla, and chairman of the very fine hospitality was Pat Keough.

Last week was a very exciting week for many students, in addition to the bicycle rider is a violation of the National Junior Honor Society inductions, the student council campaign assembly was

held and the new officers were elected. They are: Summer Bagby, president, Sue Thacker-vice president, Maria Boylis-secretary, and Mary Holland-treasurer.

Last night the vocal spring concert was held and certainly enjoyed.

Tonight the band and orchestra will present its spring concert which should prove to be wonderful.

Our track team, coached by Mr. Vavruska has been doing a fine job this year as was the trend of our fall and winter season sports. Two weeks ago the team won against Bloomfield Hills junior high school in a rollicking meet.

A tennis team has been organized for the boys by Mr. Pyskary, many boys enjoy the sport and are participating in it.

Each year, 400-500 bike riders are killed in traffic accidents, says the National Safety Council. More than 25,000 children suffer disabling injuries from these accidents. In more than three out of five fatalities, the bicycle rider is a violation of a law. Bicyclists too often forget traffic laws aren't just for drivers.



ALUMINUM QUALITY PRODUCTS

PRE-FABRICATED METAL WOOD-BURNING FIREPLACES

OUR NEW STORE HOURS
8 TO 12 NOON SAT.

REPAIRS

KAYE SASH & SCREEN

1523 N. MAIN, ROYAL OAK (South of 12-Mile)
EST. 1946 • FREE ESTIMATES • Financing Arranged • LI 8-0000
Expert Workmanship, Prompt Service, Courteous Personnel

JIM ROBBINS

MAPLE DRIVING RANGE

Oakland County's most beautiful golf driving range, with the finest outdoor lighting for evening practice.

OPEN DAILY 10 to 10

- Putting Green
- Lessons
- Equipment
- Refreshments

NOW OPEN!

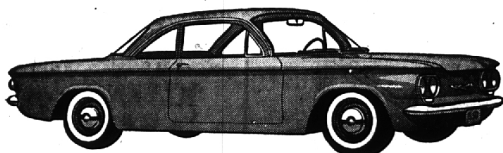
Modern New Miniature Golf Course

Fun for the Whole Family

1540 E. MAPLE AT STEVENSON HWY.
ACROSS FROM TROY DRIVE IN



TRY AMERICA'S ECONOMY ALL STAR! Corvair



You have your choice of five Corvairs—this one's the Corvair 500

\$1710⁹⁹ Plus Tax & License

A PRACTICAL CAR TO OWN

Rear engine design permits virtually flat floor for roomy passenger space.

EXTRA-BIG CORVAIR VALUE

Like fold-down rear seat that converts to station sedan—standard at no extra cost.

EXTRA-BIG CORVAIR SAVINGS

Like air-cooled engine that eliminates cooling system costs, automatic choke that saves gas, hydraulic valve lifters that need no adjustment!



NORTH CHEVROLET

OUR SERVICE DEPARTMENT IS OPEN 'TIL MIDNIGHT

1000 So. Woodward

MI 4-2735

MEMORIAL DAY

On this day let us pause to honor the memory of those who gave their lives so that we might live in freedom. It is a time to reflect . . . and give thanks for the priceless heritage they helped to preserve. Drive carefully and we wish everyone a very happy holiday.

Ted's

WOODWARD at Square Lake Road

MI 4-7764

"Ted's Is Family Fun"

WE WILL BE OPEN ALL DAY MEMORIAL DAY.

KROGER MEMORIAL DAY SPECIALS!!

SWEET N' JUICY—TENDER—WHOLE

Semi-Boneless HAMS 59^c LB.



Fully cooked, shankless, delatated. These hams give you succulent, juicy-sweet meat without the usual waste.

- NO SHANK BONE
- NO SKIN
- NO EXCESS FAT
- NO H BONE



50 EXTRA TOP VALUE STAMPS

WITH THIS COUPON AND \$5.00 PURCHASE OF MERCHANDISE EXCEPT BEER, WINE, OR CIGARETTES. COUPON VALID Wed. thru Sat., May 25 - 28

AT KROGER IN DETROIT AND EASTERN MICHIGAN. LIMIT ONE COUPON

50 EXTRA TOP VALUE STAMPS

WITH THIS COUPON AND THE PURCHASE OF ANY BRAND Canned Ham

COUPON VALID AT KROGER IN DETROIT AND EASTERN MICHIGAN THRU SAT. MAY 28, 1960

RANDOM WEIGHT — HYGRADE

HOT DOGS LB. 39^c

1/2 TO 3 POUND AVERAGE

SPARE RIBS LB. 39^c

NO BONE! NO WASTE! — HYGRADE

CANNED HAM 5 LB. CAN \$3⁹⁹

SAVE 10c ON EMBASSY

Salad Dressing QUART JAR 29^c

SAVE 6c ON

HEINZ KETCHUP 14-OZ. BTL 19^c

SAVE 19c ON 4 CANS OF CHUNK STYLE

STAR-KIST TUNA 4 CANS \$1

SAVE 6c ON KROGER BAKED PLAIN

VIENNA BREAD LB. LOAF 17^c



This Week's Breadboard Specials

"More eggs, more butter, more milk—more old-fashioned baking skill."

BUTTERSCOTCH CLUSTER COFFEE CAKE

Rich, smooth and creamy butterscotch filling is baked into this new tender Danish coffee cake.—Frosted with a glazing creamed sugar icing

SPECIAL 59^c ea. Regularly 63^c ea.



"SUMMER SNOW" LAYER CAKE

Cool-looking, moist and tender Princes White Cake—Has farm-fresh whites of eggs, pure sugar and the best of quality ingredients—Frosted lightly with rich buttercream and snowed with tender shaved coconut.

SPECIAL 99^c ea. Regularly \$1.09 ea.



MONDAY, TUESDAY AND WEDNESDAY SPECIALS

PREMIUM FRIED CAKES **SPECIAL 6/20c** Regularly 6/34c

FRENCH CHEESE PUFFS **SPECIAL 4/65c** Regularly 4/65c

THIS COUPON WORTH 10 CENTS OR

On Daffodil Farm Bakery purchases of 69¢ or more in designated Kroger Stores only. Limit one coupon to a customer.

Expires May 28, 1960

GIVE TO CASHIER BEFORE SHE CHECKS YOUR CHECKS

Coupon valid at Kroger in Birmingham only; 725 E. Maple Road.

All Kroger Stores Open Til 9 P. M. Friday AND Saturday Closed Sunday AND Memorial Day

25 EXTRA TOP VALUE STAMPS

WITH THIS COUPON AND THE PURCHASE OF ANY BRAND

Pork N' Beans

COUPON VALID AT KROGER IN DETROIT AND EASTERN MICHIGAN THRU SAT. MAY 28, 1960

50 EXTRA TOP VALUE STAMPS

WITH THIS COUPON AND THE PURCHASE OF ANY BRAND 48 COUNT ICED OR MINT ICED - 12 COUNT ICED OR 1/2 LB. SPECIAL BLEND ICED.

Kroger Tea Bags

COUPON VALID AT KROGER IN DETROIT AND EASTERN MICHIGAN THRU SAT. MAY 28, 1960

50 EXTRA TOP VALUE STAMPS

WITH THIS COUPON AND THE PURCHASE OF ANY BRAND FRESH BAKED

Jelly Roll

COUPON VALID AT KROGER IN DETROIT AND EASTERN MICHIGAN THRU SAT. MAY 28, 1960

We reserve the right to limit quantities. Prices and items effective thru Sat., May 28, 1960 at Kroger in Detroit and Eastern Michigan. None Sold to Dealers.