



Young Stockholder

Patty Johnson, four-year-old daughter of Mr. and Mrs. Arthur U. Johnson, 1627 Sheffield, and the youngest stockholder of Burroughs Corporation to attend the company's annual meeting May 5, chats with Burroughs president Ray Eppert. Her mother is at right and in the background is the Burroughs B101 Sorter-Reader which sorts magnetically encoded bank documents at the rate of 1560 items per minute.



Receives Retail Award

Samuel J. Reeve, 6495 Telegraph, Birmingham, (left), of Reeve's Standard Service, receives a runner-up certificate of distinction in the "Brand Name Retailer-of-the-Year" competition from Paul B. Shoemaker, of the executive committee of the board of directors of Brand Names Foundation, Inc. Reeve's Standard Service was awarded this honor for "outstanding presentation of manufacturers' advertised brands to the public during 1959."

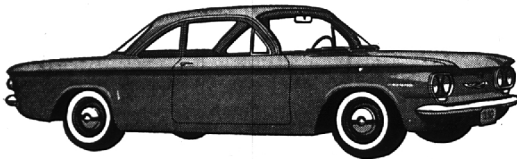


Home of Birmingham's
Outstanding
Compact Cars &
King Size Deals

TRY AMERICA'S ECONOMY ALL STAR!

FUN & PACKED, COMPACT

Corvair



You have your choice of four Corvairs—this one's the Corvair 500

\$1710⁹⁹
Plus Tax & License

A PRACTICAL CAR TO OWN

Rear engine design permits virtually flat floor for roomy passenger space.

EXTRA-BIG CORVAIR VALUE

Like fold-down rear seat that converts to station sedan—standard at no extra cost.

EXTRA-BIG CORVAIR SAVINGS

Like air-cooled engine that eliminates cooling system costs, automatic choke that saves gas, hydraulic valve lifters that need no adjustment!

NORTH CHEVROLET

1000 So. Woodward

MI 4-2735

Seniors

(Continued from Page 8-B)
in the light of this responsibility that we conscientiously look forward to long, productive lives. But at the present time, we hopefully, even pleadingly, look to our diplo-

matic leaders and the heads of all major powers to provide for us, and for everyone, the basis of life: that basis is world peace.
"As a graduating class, we ask you, please, to enter into the forthcoming summit conference and any other negotiations, with the sole aim of peace and disarmament in mind. We implore you to safeguard the future.
Hopefully and respectfully yours,
Daniel Riley, Senior Class President (representing 193 students)
Bloomfield Hills high school

Bloomfield Hills, Mich., USA
We are vitally concerned with the future of the world.
Michael Zweig (representing 194 students)
Birmingham Bloomfield Hills high school senior

HAWTHORNE ELECTRIC Co.

HEADQUARTERS FOR

GENERAL ELECTRIC'S GOLDEN VALUE LINE OF THE 60's



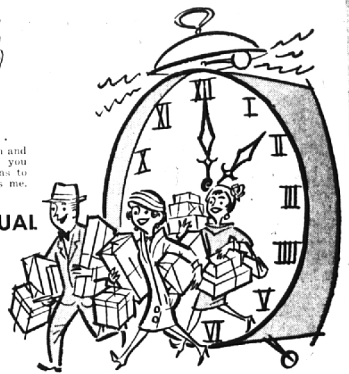
Mom Schmidt . . .
I worry about my sons losing all this sleep, but then . . . business is business.



Jim Schmidt . . .
Our deals are sharp all the time, but you should try us about 2 a.m. when we're half asleep.



C. B. Schmidt . . .
I hope you come in and buy, because if you don't the buyer has to go . . . and that's me.



DON'T MISS HAWTHORNE'S 3RD ANNUAL

36 HOUR MARATHON SALE

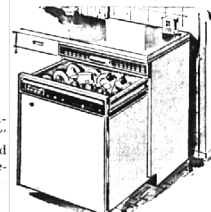
9 A.M. FRIDAY, MAY 20TH, CONTINUOUSLY
UNTIL 9 P.M. SATURDAY, MAY 21ST!

GIFTS & REFRESHMENTS FOR EVERYONE



Oven with Handy Eye-Level Controls

Has automatic oven timer, removable oven, 21" wide opening. Features Heat Brier and picture-window oven door.



Built-in 4-Cycle Dishwasher

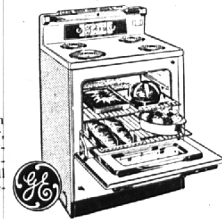
4 cycles provide just right washing for everything from pots and pans to fine crystal. Flush-away drain eliminates hand scraping.



"Designer" TV

- Styling
- Performance
- Convenience

Sparkling new and fresh Slim Silhouette styling, improved chassis performance and new convenience features are all part of the new "Designers."



30" Automatic Range

with Sensi-Temp Unit

- Big 23" Oven
- Removable see-thru oven door
- Easy-set oven timer



Refrigerator-Freezer

- 11-Cubic Foot
- Only 28 inches wide
- Automatic Defrost Refrigerator
- Zero-Degree Freezer
- Straight-line design

Every appliance, TV, Hi-Fi, and lighting fixture in our store and two warehouses will be marked down to absolute rock bottom price for these 36 hours. Full guarantees and liberal credit terms of course.



Hawthorne Electrical Co.
Birmingham's Oldest and Most Complete Electrical Store

162 N. WOODWARD

MI 4-2200

Designers

(Continued from Page 1-B)

highways; an urbanite, a medium speed car for general use, and a highly maneuverable sports car with outstanding roadability for use on secondary roads.

MITCHELL suggested that future cars may make increasing use of space age electronics to take over manual functions of driving, thus making cars snapper to operate, safer and more comfortable. He said the GM single-stick uni-control which combines the functions of accelerator, brake and steering wheel into a single wing shaped handle in the palm of the driver's hand has already proved feasible.

All-glass roofs made possible by new developments in steel and glass are envisioned by Walker. He also suggested that cars in the future may not even have wheels, operating instead by sliding on a thin film of air above the surface of the ground—a principle Ford engineers have already developed and tested.

Special emphasis will be placed upon people in cars of tomorrow, the three designers agreed. Packaging the driver and passengers for maximum comfort and safety plus development of better seating and comfort controls are but a few of the plans for making automotive travel increasingly enjoyable.

"More and more thought is being given to locating people comfortably in a car and then placing the components around them," Mitchell said. "This trend will continue and there will be new basic shapes in future cars."

WALKER DECLARED that "we've come to think of the average American car as having a hood, deck and passenger compartment in certain proportions but we may find that those proportions have been changed to provide even greater passenger space without increasing the over-all size of the car."

Exner declared: "It is conceivable that power plants in cars of the future will not require replenishable liquid fuel. If they do use power plants such as the gas turbine Chrysler has operated in standard passenger cars, fuel might be carried in flexible fuel tanks built into otherwise unusable space in the body structure, thereby utilizing more room for passenger use."

But the auto designers are realists, too. They agreed that it would not be enough in the future to turn out better individual cars and more of them—that even greater cooperation will have to be obtained between the auto industry and highway planners so the stress is placed upon improved, and even safer traffic systems.

THEY FORESAW that highways of the future, particularly between cities, would need automatic electronic controls to insure safe traffic flow. Several such systems are already being tested including a GM Auto-Control by which cars are steered by electrical signals from a wire in the highway. This system also provides automatic speed, spacing and braking controls plus obstacle detection.

"In designing for the future, we fortunately have complete cooperation from engineers and production men—all of whom, with the stylist, are complementing one another's creative efforts as never before," Exner, Mitchell and Walker agreed.

"This increased cooperation is vital to automotive advances because more and more a car is becoming a complete unit, dependent for perfection upon mutual understanding among all the specialists who design and build it."

THE DESIGNERS declared that the large styling staffs, technical staffs and proving grounds operated by their firms in Michigan insure that automotive progress will continue to accelerate and that Michigan will continue to be the hub of auto design.

They cited as further evidence that Michigan continues as the auto capital of the nation—if not the world—the fact that the National Automobile Show, held traditionally in New York since 1900, is to be held in Detroit this fall at the first major event in the new 400,000 square foot Cobo Hall.

Social drinkers can be real accident makers, the National Safety Council emphasizes. While the obnoxious drunk usually attracts attention to himself, the social drinker may appear normal—until his wits fail him in an emergency.