

Attractive Appliances Do Magic

The beauty of built-in appliances masks the magic chores they automatically perform.

Their straight, simple lines fit perfectly with those of cabinets.

MANUFACTURERS have been working harder than ever to build appliances in standard-sized units which will easily combine with standard cabinets.

Built-in ranges, refrigerators and freezers permit great versatility in kitchen arrangement.

One oven can be raised or lowered mechanically to suit the height of the user. Its counter top provides extra work space.

REFRIGERATOR sections and freezer sections can be located in one spot or separated.

Units which hang on the wall—just like cabinets—offer many unusual possibilities for your kitchen plan.

Even in the laundry area, automatic washers and dryers are manufactured for built-in installation.

ELECTRONIC ovens that let you stage your own dramatic cooking performance in a matter of seconds are designed to fit in the same space as standard built-in electric ovens.

Even if you don't buy this exciting appliance right now, you'll have a spot for it in the kitchen when you do.

Right Tools Make Tasks Much Easier

What seems to be a difficult home modernization job becomes easy with the right tools.

Jobs that should take a few minutes run into hours if you lack proper equipment.

HERE ARE the tools which should be found in every home workshop:

A claw hammer and an axe; three screwdrivers; two wood chisels; a cold chisel; three-cornered file; several pairs of pliers and a sander.

For more-involved carpentry work, you need a cross-cut saw, plane, try-square, level and hand drill. You should also have a pry bar and a steel rule.

AS AN AID to painting and glazing, a wide putty-knife and a narrow putty-knife are invaluable.

Home handymen who undertake more complicated repairs will need additional types of tools.

Makers have developed special tools for virtually every job around the home. Many of these are adapted from tools proved in industry.

Ask your dealer to suggest tools needed for the project you have in mind.

Inexpensive Walk Easy to Build

Love to have a flagstone walk or patio, but find it would be a bit too expensive?

Check local builders and building wrecking firms, what you may find are concrete chunks that were once a floor or retaining wall.

If they are of different texture and color, all the better. Laid in an informal pattern, the effect will be charming.

Harder Than Nails

New hand saw has 3½ inches of nail-cutting teeth on the back of its blade. Saw also has 12-inch rule etched in blade.

Never Too Old

A house is never too new, and rarely too old, to benefit from home improvement.

New HOME Beauty

INSIDE



AND OUT!

Check This Week's Specials For Those Home Improvement Projects

WINDOW SHUTTERS

Clear White Pine-Movable Slats



H E I G H T	Width		
	6"	7"	8"
20"	.97	1.50	1.65
24"	1.65	1.90	1.65
28"	1.90	2.05	2.20
32"	2.10	2.35	2.70

Also Available in 9", 10", 11", 12" widths

LOUVER DOORS

TOP QUALITY
Clear White Pine
MANUFACTURERS
CLOSEOUTS

\$5.95 ea.



12x80x1½
14x80x1½
15x80x1½



MASONITE HARDBOARD

4x8x½ PANELS

STANDARD\$1.98
STANDARD PEGBOARD\$2.69
TEMPERED PEGBOARD\$3.98

MAHOGANY PANELING

4x8x¼ V-GROOVED

UNFINISHED\$4.87 Sheet
SUPER SATIN SURFACED\$6.49 Sheet

All Above Items Include Free Delivery—With The Exception Of Bag Goods. All Are 1st Quality. No Rejects or Seconds.
WE WILL HELP YOU DO IT YOURSELF, OR WILL RECOMMEND A QUALIFIED CONTRACTOR

NEW HOURS

FOR YOUR CONVENIENCE

MONDAY THRU THURSDAY 7:30 to 5:30
FRIDAY 7:30 to 7:30
SATURDAY 7:30 to 3:00

FENCE MATERIAL

KILN DRIED
WHITE FIR

2x4 10c Lin. Ft.

1x6 7c Lin. Ft.

CLEAR FIR

PICKETS



CEDAR POSTS

36" 16c ea. 3"x7' 45c ea.

48" 20c ea. 4"x7' 69c ea.

FREE! Use of Post Hole Digger with Fence Purchases!

SCREEN MATERIAL



1x2 CLEAR CEDAR 6c Ft.

1x3 CLEAR CEDAR 8½c Ft.

SCREEN MOULDING 3c Lin. Ft.

ALUMINUM WIRE 12c Sq. Ft.

READY MIX
CONCRETE
or MORTAR



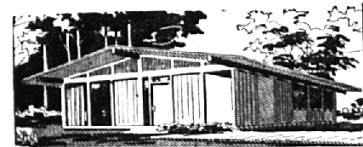
PLAY SAND
80 Lb. sx 78c
ASPHALT PATCH

FOR THE PATIO

VERMONT SLATE

NEW YORK BLUESTONE

FREE CHANCE FOR \$10,000 WELD-WOOD HOUSE NOW AVAILABLE!



Birmingham Lumber AND SUPPLY COMPANY INC.



Between ADAMS & HUNTER — 5 BLOCKS SOUTH OF MAPLE (East of Greenfield's)