

## B'ham Artists To Participate In Discussions

Two Birmingham artists, Mi-  
nori Yamaaki, internationally  
known architect, and Mrs. Sylvia  
Cooper, 383 Filgrim, distinguished  
novelist, will be "Conversations"  
leaders in Detroit's "Conversations"

in the Arts program scheduled to  
take place throughout Detroit  
until May 1, as a part of "Detroit  
Adventure, 1960." Yamaaki will make ap-  
pearances in the "Conversations" en-

titled "Art in the Buildings and  
Things We Live With," a series of  
evening discussions about  
architecture, design, color and  
form—the practical applications  
of art.

At least one of his appearances  
will be made in one of his more  
famous buildings, the Metrocor  
Memorial Conference center, Sec-  
ond and Ferry.

MRS. COOPER has agreed to be  
the novelist in the "Conversations"  
entitled "Ask the Artists,"  
which will present to four small  
groups throughout the city—the  
work and the person of a novelist,  
a poet, a composer and a sculptor.

Mrs. Cooper's fifth novel, "The  
Made Man," will be published by  
Random House in mid-March.  
"Conversations in the Arts,"  
first presented to the people of the  
area last year, turned out to be  
much more popular than its sponsors,  
18 major Detroit institutions, anticipated.

Consequently this year, it has  
been expanded both in the subjects  
to be discussed and in the number  
of participants it will be prepared  
to accommodate.

"CONVERSATIONS in the  
Arts" is open to the public.

Each "Conversations" group  
meets once a week for eight  
weeks. The groups are purposely  
kept small to encourage the give  
and take of conversation, and they  
meet at hours and locations  
throughout the metropolitan area  
convenient to housewives,  
businessmen, professional people  
and workers.

At the conclusion of the eight-  
week series, the conversation partic-  
ipants gather in a city-wide  
conference to exchange ideas with  
internationally known scholars  
and creative and performing ar-  
tists.

A detailed brochure describing  
the program may be obtained by  
writing "Detroit Adventure," in  
care of Wayne State University.

**Helps Plan Dinner  
For WMU Head**

KALAMAZOO—President Paul  
V. Sangren, who will retire June  
30 after heading Western Michigan  
university for 24 years, will be  
feted at a public tribute dinner  
April 6.

Out-of-state members of the  
planning committee include Har-  
old Speaker of Birmingham.

## 2-D THE BIRMINGHAM (MICH.) ECCENTRIC March 24, 1960



## Signs Over UF's New HQ

Amos Gregory, 1216 Dorchester Rd., Birmingham, secretary of the Kresge Foundation signs a deed to the six-story building at 1328 Woodward, Detroit, transferring the property from the Kresge Foundation to the United Foundation, in the presence of two UF officials. They are (left) William M. Day, president of Michigan Bell and a UF vice president; and Walter C. Laidlaw, 704 Tottenham, Birmingham, executive vice president of the UF. The building will become UF headquarters. The foundation also gave nearly \$400,000 to renovate the inside of the building.

## In Oakland County . . .

over last year's \$11,926,821 was  
handed by Robert V. Moore, county  
auditor's chairman, to the super-  
visors' way, and means committee.  
Moore said if state equalized  
valuations are raised five per cent,  
the county will need a larger share  
(about three tenths of one per cent  
more) of the 15 mill property tax  
it must split annually with town-  
ships and schools. If a ten per cent  
like goes through, Moore said the  
county would need no raise in its  
share of the 15 mills.

Moore said the county's share  
would have to go up to more than  
six mills if equalized valuations  
remain at present levels.

## Parties Fight For Judgeship

A play by both Democrats and  
Republicans to get one of their  
own number established as Oak-  
land county's second probate judge  
is holding up action on the much-  
needed judgeship.

State Sen. L. Harvey Lodge,  
Pontiac Republican, has introduced  
and secured passage in the senate  
of a bill calling for election of the  
second judge, rather than appoint-  
ment as the only way to  
crack the 11 has kept Democrats  
from electing a county officer since  
1938. Oakland Circuit Judges Clark  
J. Adams and William John Beer,  
both Democrats appointed by Gov.  
Williams, have gained re-election  
at the polls.

## Senate Kills Child Priority Bill of Lodge

LANSING—A proposal by State  
Sen. L. Harvey Lodge (R-Oak-  
land) to give priority to certain  
mentally disturbed children in  
mental hospital admissions was  
defeated last week in the state  
senate.

The measure had been backed  
by the American Association of  
University Women and the Michi-  
gan probate judges' association.

Lodge backed his own party's  
finance leaders in a lengthy fight  
to insert the measure into a Re-  
publican mental health appropri-  
ations bill.

## Clarkson Helps To Secure Child Guidance Clinic

Rep. S. James Clarkson (D-  
Southfield) reported last week that  
his efforts in the Senate to secure  
a South Oakland Child Guidance  
Clinic, have been successful.

"This will fill an urgent need,  
For those of us who have worked  
to establish the clinic, this is one  
of the major accomplishments of  
the 1960 legislative session," the  
4th district said.

## 10 Per Cent Hike Seen in Oakland's Budget for 1961

A tentative Oakland county bud-  
get for 1961 calls for expenditure  
of about \$1.3 million more than  
this year. The 10 per cent increase

## Help Your Child Enjoy Good Music

Joey may appear very intent upon  
his block-building. At the same  
time he may be listening to the  
words of the latest "hit" tune blar-  
ning forth from the radio. Pretty  
soon he's repeating the words him-  
self.

Betty Garlick, head of the Spar-  
tan nursery school at Michigan  
State University, says you can use  
this same kind of indirect teaching  
by singing as you work or when  
you give young Joey a bath.

For pre-school children, the  
teaching of songs should never be  
a formal procedure.

MISS GARLICK suggests you  
introduce children to many differ-  
ent types of songs—nonsense songs,  
hymns, and traditional favorites  
like "Oh Suzanna".

She adds that it's never too soon  
to acquaint children with the mu-  
sic of the masters. This can be  
accidental, too, with no forced  
listening. Carefully chosen radio  
and television shows introduce  
good music. And there is a wealth  
of music in record form.

"On the spot songs" related to  
a familiar experience delight chil-  
dren. When Joey is on the swing  
for instance, you can make up a  
song about "swinging, swinging  
now we go up, now we go down  
up to the sky, back to the ground."



Face and Feature Corrections  
Face Peeling  
**Carolyn Nilson,**  
Stockholm graduate  
Her courtesy Cosmetics are  
World Famous MI 6-7373  
772 E. Maple

Match the rhythm to the motion  
of the swing and you have a "fun  
song." Singing is one musical experience  
that helps to enrich a child's life,  
concludes Miss Garlick. Parents  
can encourage children to sing and  
to find pleasure in music.

Ready To Try On  
**Fabulous Furs**  
for  
Spring  
New Colors! New Fashions!  
**Furs by Robert**  
1550 Broadway  
Also Grosse Pointe, Birmingham

## STOP AT 1000 S. WOODWARD, BIRMINGHAM

Let  
**CHARLES  
COE**  
give you the  
top dollar  
on your present  
car for a  
NEW 1960  
CHEVROLET  
Charles has been  
giving good  
deals at  
NORTH  
CHEVROLET  
since 1958.

## A tactful plan for the bride-to-be

Come to our Wedding Gift Registry and record your selections in silver, dinnerware, crystal and other gifts . . . your needs and your desires.

Then when friends ask us (as so many of them do) for gift suggestions we will be able to advise them of just what you can use. Moreover, as selections are made we will keep track of them carefully to avoid duplications.

You too, can easily avoid embarrassment or wondering how much they wish to spend simply by saying: "My preferences are in the Wedding Gift Registry at LaBelles."

**LaBelles**  
wedding gift  
registry



137 WEST MAPLE  
Books, Stationery and Gifts

Wigle Sells It!  
Wigle Installs It!  
Wigle Guarantees It!  
**SAVE 20% to 25%**  
on your home fuel bills with  
**GAS HEAT**  
FREE HEATING ANALYSIS

Job Opportunity  
We will employ several men and  
women to engage in gas heat work  
verifiable work in Consumers  
Power areas. Call University  
5-7800 for details.

BRUCE WIGLE PLUMBING & HEATING CO.  
17600 Livermore near McNichols  
UN 3-7800  
15304 Kercheval near Beasfield  
VA 2-9070

With our 40 years' heating experience, Wigle has cut heating bills for thousands of businesses and families like yours. Now, with Consumers' approval, you can get gas heat for your home or business—installed by Wigle in just a few hours without inconvenience to you. Phone or mail coupon below. Wigle trucks serve your community daily. No Money Down—Easy E.H.A. Terms.

BRUCE WIGLE PLUMBING & HEATING CO.  
17600 Livermore, Detroit 21, Michigan  
Please make a free heating analysis, and give me a cost estimate at no obligation.

Name \_\_\_\_\_  
Address \_\_\_\_\_ Phone \_\_\_\_\_  
City \_\_\_\_\_ Zone \_\_\_\_\_ State \_\_\_\_\_

## THINKS BIG

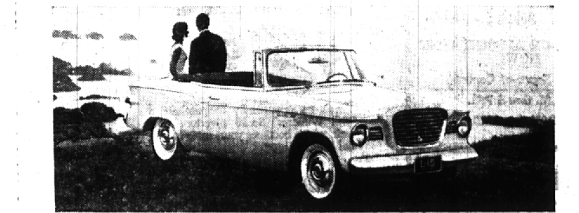
THE LARK IS THE SHORTEST COMPACT, BUT LOADS BIG. Combines more head-shoulder-hip-leg room for true six passenger comfort.

THE LARK HAS BIG PERFORMANCE. Take your pick: hustling Six or 180 hp. V-8. Both famous for combining zip with outstanding gas economy.

THE LARK GIVES YOU BIG SAVINGS. Proven to save up to 33% on gas and up to 23% on maintenance (loads of saving facts on request).

THE LARK HAS BIG PROOF. More than a billion owner-driven miles. Proven also in over 1000 business and governmental fleets.

THE LARK HAS BIG VALUE. Official used car guides prove that The Lark consistently holds its value better than the average low-priced car.



THE LARK HAS THE BIGGEST SELECTION . . . unquestionably. Six stunning styles; two proven engines (V-8 or Six); three transmissions; seven axle ratios; optional like 'trim' Traction, Hill-Holder, head rests, reclining seats—a list as long as your arm.

Visit your Studebaker Dealer—and see the biggest values in town.

The Compact without Compromise... **THE LARK** BY STUDEBAKER

SUBURBAN MOTORS CO., Inc., 565 S. Woodward

SEE THE NEW STUDEBAKER CHAMP PICKUPS—HANDSOME, HUSKY, LOWEST-PRICED TOO!

SEE  
**HARRISON'S**  
FOR ALL  
REPAIRS.  
ON LUGGAGE  
& LEATHER GOODS  
Zippers Repaired  
& Replaced  
**HARRISON'S**  
Luggage & Leather Goods  
233 E. Maple MI 6-8088  
Also Detroit, 1217 Griswold

PRICES ON STERLING ARE GOING UP!  
**BUY NOW AND SAVE!**  
order your favorite TOWLE pattern  
BEFORE APRIL 2, 1960  
Use our convenient credit terms

If you've been longing for more of your favorite Towle pattern—don't delay! If you've been thinking of starting a Towle set—now's your golden opportunity!

Towle Silversmiths are announcing—with regret—a price rise on all their flatware. And they've given us permission to tell our customers in advance, so that all of you who have been planning Towle purchases can take advantage of this last chance!

Under these circumstances, you may want to buy now against future needs. And we'd be glad to help you do so and you can pay for your purchase in the months to come. Don't hesitate to ask about our credit terms.

Orders received by April 2nd will be filled at present low prices. Prices shown are for four-piece place settings (teaspoon, knife, fork and salad fork) and include federal tax.

Come in Today or Mail This Coupon

Please send me \_\_\_\_\_ place settings in the \_\_\_\_\_ pattern.  
 Charge to my account  
 Full payment enclosed  
Name \_\_\_\_\_  
Address \_\_\_\_\_  
City \_\_\_\_\_ Zone \_\_\_\_\_ State \_\_\_\_\_

**LAKES' JEWELERS**  
"The Sterling Store of Birmingham"  
Woodward at Maple MI 4-5315