



Space Rage

... hits Bloomfield Village school. See page 1-B.

6327 Takes

... last run on steam. See page 1-B.

Tete a Tete At Tea

... held at Bloomfield country day. See page 1-C.

INSIDE THE ECCENTRIC

- Amusements 5-C
- Bits of Birmingham 2-A
- Business Briefs 1-B
- Campus News 7-D
- County News 2-D
- Church 7-B
- Down to Earth 8-B
- Editorials 8-B
- Feature News 8-B
- Obituaries 8-A
- Real Estate 8-B
- Round the Towns 8-E
- Sports 8-E
- Theaters 6-C
- Woman's News 6-C
- Want Ads 6-C
- Youth 8-D

This and That

By George R. Averill

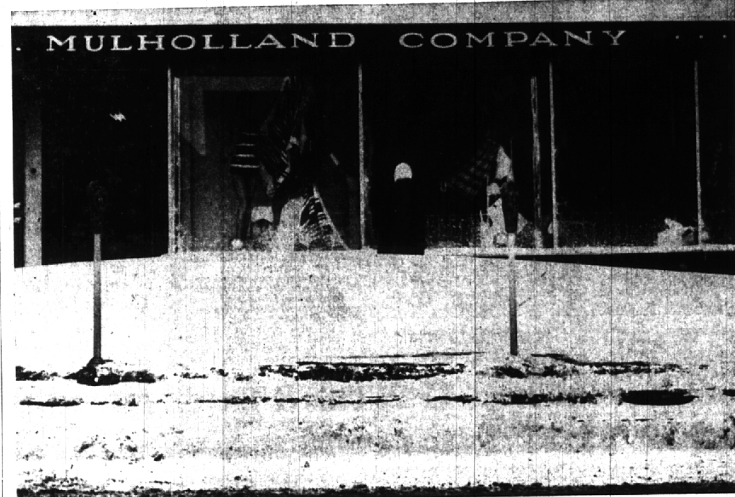
Opposition to New School Millage Being Manifested

How will Birmingham public school district voters decide the question of adding another four mills to their taxes? In practically every past such election, you could be fairly sure that a large majority would say "YES". However, one cannot be too certain of next Monday's results. More and more taxpayers are using the ballot box to register their opposition to more taxes. Believing themselves impotent to prevent more taxation from Washington and Lansing, many voters say, "At least I can vote against more local taxes." And there's what more and more of them are doing. Those who oppose added school taxes at this or any other time are of course, within their legal rights. Indeed, such opposition, when based upon informed personal opinions, should be welcomed in every branch of government. Likewise, those who support the present desired four mill addition to their school tax bill, are equally within their rights. It is through this spirit of pro and con on public issues that the best of democratic processes may function.

IT IS MY conviction, however, that if opponents of needed local taxes would spend some of their time making known their tax antagonisms to their elected federal and state public officials, they could witness a lowering of such tax levies. . . and at least some of the savings no doubt would be available, more willingly for local projects, including, most importantly, sufficient money to compensate the faculty adequately. One conclusion, of course, may be drawn as voters more and more oppose higher local millage increases for our public schools: school authorities will do well to exercise the absolute maximum of thrift and frugality in their future plans and operation of the district's educational system. This may mean the use of more simple architectural designs and the substitution of acceptable, but

People who depend upon the noisy applause of others for a thrill, for so-called "uplift", are depending upon a very flimsy loyalty. The enthusiasm of the crowd may surge to high pitch for the slightest of reasons. . . and by the same means will subside when one makes the slightest mistake, or, in sports, fails to win. Indeed, to depend upon the crowd's capricious support is building on weak foundations.

83rd YEAR—NO. 3



Hey! Who's Leaving That Arctic Door Open!

We just seem to be drifting into spring. Especially snow drifting—like this 3-foot one on N. Woodward avenue, encountered by Eccentric photographer Joe Apeurach when he got to the office Tuesday morning. The drift almost

obscures that fur-coated woman pedestrian, who would like to be wearing that spring finery in some southern locale! Well, Dad, in the meantime, throw another log on the fire!

Roll Call Hits \$17,232 in 2nd Week

Contributions are up, contributors down, "but we hope this is a good trend," said Chairman Ralph Hunt, as he reported \$17,232.36 in the annual Community House "roll call."

WITH THREE WEEKS to go, the campaign should overshoot its \$31,500 goal, or so the committee hoped, if the present proportion holds.

The drive this year is eliminating the door-to-door solicitation, but it is hoped that Birmingham residents' response to the 16,004 requests mailed to private homes will exceed the amounts raised with the old method.

Two More Miles Of Phones for Quarton Rd. Area

Work is underway on a \$30,294 project to provide additional telephone facilities for subscribers in the Quarton road area of the Midwest exchange.

Albert H. Warner, Birmingham manager for Michigan Bell Telephone company, said the expenditure is part of the \$715,000 the company will spend in the exchange this year to expand and improve service.

Nearly two miles of aerial cable will be placed along Quarton from Cragsbrook road to Lane Lake road. Scheduled for completion in July, the project will use cable ranging in size from 400 to 500 pairs of telephone wires.

Warner said the project will enable the company to fill new orders for residential service and orders for better grades of service.

ready reception of promotional posters by the local merchants who are displaying them," said Mrs. Ralph O. Moore, member of the board and chairman of the poster campaign.

Poster design was suggested to Mrs. Lauren Iverson, 1904 Brooklawn court, by the prize-winning slogan, "The Open Door—To Our Town." The slogan was concocted by Mrs. O. S. Ward, 234 1/2 W. Lincoln.

The poster committee included

Earl Ward Is 1960 Torch Drive Chief

Earl G. Ward, 650 Lone Pine Rd., Bloomfield Hills, Ford Motor Company vice president—purchasing, has been named general chairman of the 1960 Torch Drive, to be held Oct. 11 through Nov. 3.

Benson Ford, United Foundation president and Ford Motor Company vice president, announced Ward's appointment to head the nation's first and foremost unit fund-raising drive.

Last year, Ward served as general campaign co-chairman for chapter solicitation, responsible for five Torch Drive units which raised more than 85 per cent of the \$17,000,000 contributed for 195 health and community services.

WARD'S SUCCESS as co-chairman followed by his appointment as general chairman climaxed years of outstanding campaign leadership in the Torch Drive.

In 1954 and 1957, he was co-chairman of the major industry unit, under chairman J. M. Roche and J. P. Gordon, who heads of the larger manufacturing com-



EARL G. WARD

panies resulted in achieving 104 and 100 per cent of quotas. In 1958, Ward was moved up to chairman of the automotive and "U. S. spent."

B'ham Valuation Up \$1.8 Million

New construction—primarily commercial and multiple dwellings—accounts for the \$1,823,340 increase in Birmingham's 1960 assessed valuation, according to City Assessor Clark Hagstrom.

He and board of review members P. G. Burnett and Barrett Mason have certified to the city commission a new roll totaling \$66,951,540. Real estate is valued at \$50,827,308, personal property at \$7,124,150.

Last year's total valuation was \$65,122,200.

Detroit DPW Boss To List Related Metro Problems

Glenn C. Richards, Detroit DPW commissioner, will discuss "Our Future Community" at Monday's luncheon meeting of the Birmingham Rotary club.

He will show the interrelated problems of Detroit and its suburbs, said program chairman Matt Cammerici.

At its March 21 meeting, the club elected three new members to one of the best committees of directors. They are Forbes Haskell, Harvey Kresge and John Wackvaine.

4-Mill Tax Boost Before Voters in Election Monday

Some B'ham Homes Just Ain't What They Used to Be

Spurred by a petition from neighborhood residents, the Birmingham city commission Monday night ordered an investigation into how far the city can legally go to rehabilitate old neighborhoods.

Of particular concern to city officials for some years has been several of the homes just across the street from the municipal building itself. This southwest corner of Merrill and Henrietta brought formal protests this week from 28 Birmingham residents on Townsend, Henrietta, Bates, Shipman, Davis and Merrill streets.

"I believe we should see how far we can legally go on this matter—then go right up to that line," declared Commissioner William H. Burgum.

CITY MANAGER L. R. Gave was instructed to check with any and all city departments which might have information to bear on a solution. In their petition, residents charged that "continued neglect" of these several homes has resulted in the periodic appearance of rats with the resultant need for extermination, the process of which endangers pets, and more importantly neighborhood children.

"Therefore, as citizens and taxpayers of this city, we bring these facts before the city commission for discussion, hoping that some lasting means will be found to protect our attractive city from blight as well as clearing up the present situation as soon as possible."

Restrictions Force Church to Halt Classes in House

Embury Methodist church, 14 Mile road at Croft, was ordered this week by Circuit Judge Stanton Dondero to stop Sunday school sessions held in a building across the street from the church.

The church-owned home on the southwest corner is under residential restrictions and was purchased as a residence for a future assistant pastor.

Neighbors took the church to court last year for violating the restrictions. Judge Frank Doty upheld the restrictions and gave Embury Methodist one year to find another spot for the classes. Without funds to build and the time allotment up, the case went back to court. Judge Dondero ruled that the classes be stopped. The Rev. Samuel Stout is the pastor of the church. He lives at 1720 Bradford.

All makes of indoor spring mattresses equipped with ROYAL MATTRESS COMPANY "Dial" and "Mats" are available at \$29.95. (See Eccentric 3-23.)

1 in 7 Expected To Vote

See Editorial On Page 8-B
By GEORGE WM. AVERILL
Managing Editor

American Legion, Department Store Plan Land Deal

Another multiple-lot land deal and trade involving the Demery's department store to be built at Woodward and Hamilton came to light at the Birmingham city commission meeting this week.

The disclosure came as owner Huter G. Smith petitioned the city to re-zone his property at the southwest corner of Hazel and Adams from R-2 to R-4, multiple family residential.

THE LAND is slated to be the site for a Veterans Memorial hall to be built by the Charles Edwards Post, number 14, American Legion.

The legion's present building and site at 267 Farndale will be purchased by the department store for additional parking space; it is within the block that will be occupied by the \$2.5 million store.

The store will purchase the 120 by 107 foot Hazel-Adams site if rezoning is approved, and swap with the veterans group. Actual cash figures were not disclosed.

COMMANDER James R. Casey of the local post said a 40 by 60 foot museum building will be constructed.

Preliminary plans for a tri-level building with a half-basement and a 300-person capacity ballroom have been drawn up.

The legion will be ready to start on the new building immediately, Post Adjutant Myron Collins said.

The request was referred to the plan board.

CASH for "White-Elephant" Household Goods

Secure your attic for household goods too heavy to take to the dump. List them, then phone MI 4-1160 for an immediate Birmingham Economic Credit Fund ad. Chances are your "white- elephants" will soon be converted to much needed ready cash.

Copy Deadline—Tuesday, 5 p.m.

In Control May 23

Seaholm high school seniors will hold their civic control day May 23. This annual event enables students to "act" as Birmingham municipal officials and get a first-hand knowledge of local government.



Grand Prize Winner

The Shop in Birmingham grand prize winner, Miss Judith M. Bollman, 18, flashes her winning smile as she receives the car papers from Mayor Harry M. Dennis, Jr. Watching from left to right are Dick Turner, vice president of Harold Turner's Ford,

Girl, 18, Closest Of 50,000 Entrants In B'ham Contest

After being nearly swamped with the more than 50,000 entries in the Shop in Birmingham contest, the winners have been determined!

First prize—a new 1960 Ford Falcon—was won by Miss Judith M. Bollman, 18, of 4882 Paxton, Pontiac. Her winning estimate of the coins in the glass container was \$393.11. This was only eight cents higher and the closest to the actual figure of \$393.03.

When asked what she was going to do with the car, Miss Bollman replied, "First I'm going to learn to drive." She is presently a student at Waterford township high school.

THE RUNNERS-UP were led by Miss Shirley Phillips, 21, of Lincoln, Birmingham, who received a \$150 gift certificate with her estimate of \$392.92, eleven cents off the actual figure.

She lives at home with her parents, Mr. and Mrs. James C. Phillips and works for the Birmingham branch of the Axiote club.

David N. Hyde, 16, of 465 Tiltbury, received a \$75 gift certificate with his estimate of \$392.87.

WHAT WILL HE do with this unexpected gift? "Well, I was thinking about a new pair of skis,



Receiving Gift Certificates

The runners-up in the Shop in Birmingham contest were awarded their gift certificates in the lobby of the Birmingham theatre. Seen from left to right, Charles Mortensen, secretary of Chamber of Commerce; Jim Wheeler, manager of Mort-

mers; Miss Shirley Phillips, second prize winner; Charles D. Fiske, fourth prize winner; Keith Muser, theatre manager; and third prize winner David N. Hyde, Seaholm student.