

Individuality Replaces Fads For Betty Coed

More individuality is the fashion rule among high school and college girls this spring. Where, formerly, campus fads often led to a sameness in dressing, now the girls are putting more stress on a personally becoming, and somewhat different, look.

There is, of course, a fashion resemblance among them, since clothes for the young set reflect the general spring trends, with wide sleeves, many costumes, fuller skirts and paler colors notable.

Each girl chooses from the season's favorite styles, then creates her own special air of fashion.

THE DIFFERENCE may come from the way new "separate" separates, designed for more mixing, less matching, are put together, or it may be in the accessories chosen to accent a cropped-jacket suit, a Chanel-mood costume or a braid-trimmed coat.

Both high school and college agers give a high rating to shirt-waists and separates. They lead busy lives, needing clothes for school, for dates and parties, for sports, for leisure, for varied activities.

Mixable separates can fill numerous wardrobe needs, and a change of accessories makes a shirtwaist suitable for many different occasions. Costumes are liked for the same reason.

SINCE MEMBERS of the young set always had a warm spot in their hearts, and a place in their wardrobes, for some boufant-skirted fashions, they welcome the return of wider skirts.

Cropped jackets over sheaths and Chanel-look jacket or easy tops over pleated skirts are two favorite young choices. Dressy, feminine boufants and well-tailored casuals are mainstays of the high schooler's wardrobe. She prefers short jackets for her suits and costumes, and normal, belted waistlines.

For variety, the college girl spices her wardrobe with an occasional lowered waistline fashion. Cutaway jackets are a well-liked way of suggesting the longer torso.

New Lively Colors, Standard Basics Latest for Coats

Black and white, beige and gray lead the way in spring coat colors, accompanied by many lovely, lively hues.

Cobalt blue, flame, emerald and mimosa are beautified with sparkling jewel buttons. Among the lush, creamy tones are pink par-fait, apple blossom and desert sand.

Whitened tones are color-matched with beaver, or contrasted with Somali leopard for early spring wear.



Continental Look

An American adaptation of the Continental look is seen in this spring topcoat of light-weight soft British Woolen black and white velour with split raglan sleeves.



Alum Models

Adele Martin styled the dress modeled by Mrs. Arthur N. Hill, of Buckingham, Birmingham. The pure silk shirtwaist dress, beige with stripes or orange and green in the skirt, sells at about \$40.

Pictures of

the Birmingham women in this special section were taken during a recent fashion show sponsored by the Birmingham alumnae of College Sorosis.

Spectator Is Ruling Shoe For Season

Spectators are queen among spring shoe fashions, with new styling that starts where the traditional brown-and-white spectator leaves off.

Seen in daytime, casual and evening shoes, spectators appear in combinations of smooth leathers in contrasting colors.

And in new combinations of smooth and suede, suede and patent smooth and grained, and subtle blends of suede and soft brushed leathers, reports the Shoe Fashion Service of Leather Industries of America.

MANY are in creamy shades of bone, barley-beige, cobbler tan and others in the brown family, as well as in gray, lilac, olive, comet blue and rose.

White, by itself or with other colors, is the most important single color in spring and summer shoes. In addition to all-white spectators, there are highlights in white on dressy pumps and sandals.

ANOTHER important group, as spring travels on, are frosted spring and summer pastels in a full range of leather textures that are especially light in weight.

These colors — notably yellow tulip, coral, Paris rose and lilac — have a whitened look.

THE NEAT edge of the leather sole comes into special prominence in spectator styles, underlining the tailored shape of the shoe.

Many daytime styles feature a welted, extended sole stitched in white or black. Evening shoes often have black-outlined leather soles.

SPECTATOR details — foxing, perforations, medallion designs — are imaginatively adapted to the trim, tailored feeling of afternoon shoes and the softly feminine styles of evening.

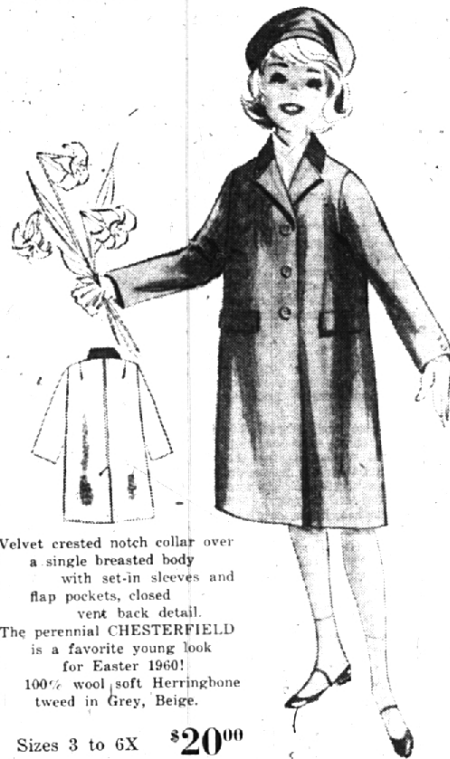
In dressy daytime and smart walking shoes, delicate piping or half-inch wide bands of kid, calf or patent leather outline the collar of the shoe.

SHOES for late day and evening wear show the spectator influence in the way jewels are used to copy the perforations and patterns of daytime shoes.

Well-Suited

Sharkskin and gabardine make a strong comeback as fabrics for suits. Other popular choices in-

clude silk, silk-wool blends, airy basketweaves and tweeds, supple crepes and jerseys and dressy cottons.



Velvet crested notch collar over a single breasted body with set-in sleeves and flap pockets, closed vent back detail.

The perennial CHESTERFIELD is a favorite young look for Easter 1960! 100% wool soft Herringbone tweed in Grey, Beige.

Sizes 3 to 6X \$20.00

7 to 14 \$25.00

CHARGE ACCOUNTS INVITED

Pam's of Bloomfield

Bloomfield Plaza
6562 Telegraph at Maple
OPEN FRIDAY EVE TIL 9

MA 6-5925

Here and now . . .
new colors, new silhouettes,
new spring fashion enthusiasms.
See everything current,
in our spring-is-here
fashion collections!

for **SPRING FASHIONS..**



Himmelhoch's