

EACH THURSDAY
ENJOY
HIMELHOCH'S FASHION SHOW
beginning 12 noon
at Greenfield's

Greenfield's
RESTAURANT
725 So. Hunter Blvd.
Birmingham



our vote goes to...



for three big reasons

- 1 They're comfortable
- 2 They look smart
- 3 They wear longer



Sensible prices... expert fitting.

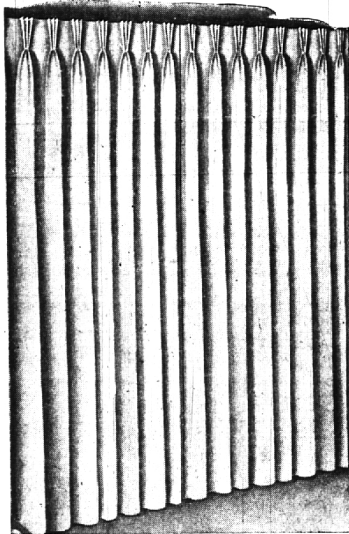
Experienced shoe fitters assure perfect fit
McSWEENEY'S
FINE FOOTWEAR

Orthopedic Shoes for Children
OPEN FRIDAY TILL NINE
277 Pierce St., Birmingham

All children's shoes are correctly fitted by Mr. McSweeney

MI 6-4488

CUSTOMIZED DRAPERIES
Introducing New Patterns
Fiberglas



LOVELY PRINTS
Modern, traditional, scenic... in new patterns and colors.
SOLID COLORS
Glowing new decorator shades from which to choose.
LIVING ROOMS, BEDROOMS, KITCHENS
Styles suitable for any room.
BETTER
Better than average in fabric and workmanship.
ALL STYLES
All styles can be had in yard goods if you wish to make your own.

Length	1 Width	1 1/2 Width	2 Widths	3 Widths
36"	6.00	10.50	15.00	24.00
45"	6.50	11.00	16.00	25.00
54"	7.50	12.00	17.00	26.50
63"	8.00	13.00	18.00	28.00
72"	8.00	13.50	18.50	29.00
81"	8.50	14.50	19.50	31.00
84"	9.00	15.00	20.00	32.00
90"	\$9.50	\$15.00	\$20.00	\$32.00

- Prices vary slightly according to patterns
- Bring your window measurements.
- Approximately 2 week delivery

OPEN MONDAY and FRIDAY NIGHTS
(Parking right at the door)

MOLLS
FE 4-0516

1666 S. Telegraph
PONTIAC

PEOPLE'S COLUMN

French Exchange Student Defends His Countrymen

It is with real disappointment that I read the editorial about the situation in France in the Feb. 25 issue of your publication.

In my quality of French citizen and because of my special situation in your community as a foreign exchange student, I considered as a duty to write this letter; and I should be very grateful to see it printed in your newspaper.

Criticizing the French political situation, our institutions as well as the men at the head of those institutions have never been very original. But it is in your newspaper that I read the first article throwing the stone directly to the French people as individuals.

I read: "...the French people are unable, of themselves, to exert those self-disciplines, self-reliance that are necessary to the operation of a democracy."

FRANCE IS ALSO referred as a "so-called democratic nation". This sarcastic tone may be judged logically from the conclusion that democracy in France is dead.

It is a fact that democracy was born in America before it was born in France. It is also a fact that democracy in France had to go through quite a few storms, violent storms, long storms, storms of many kinds.

But if you happened to take a look at our last constitution, of 1958, you must have noticed that it is a pretty democratic constitution and that after the differences between it and the constitution of the United States are not so big.

IF THE ARTICLE IS states that in case of extreme emergency, the government may ask to the congress to take over some of the powers usually exclusive of the assembly, history proved that every democratic system which is unable to take measures or to make sacrifices allowing it to defend itself did not survive.

Speaking of the French people themselves, "semi-decadent people" as you called them, many different people, from the outside as well as from the inside, told them that democracy is ineffective or at least awfully slow. They always come back to it, very often sacrificing their lives or their comfort to their ideals.

In our every-day life, our so-called "devotion to the fleshpots" does not make us forgetting the basic principles of democracy. The percentage of people voting compared to the percentage of people "forgetting" is not lower than in any other free country.

ALSO WE STILL have really different parties and really different political newspapers: two items without which democracy might very well be an illusion.

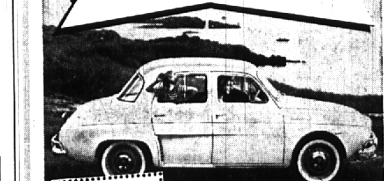
In case I got a wrong interpretation, in case you meant semi-de-



BOTH LOOSE TEA and TEABAGS
Your Store Name
ALBAN'S PARTY FOODS
188 North Hunter Blvd.
Birmingham

OWN A BRAND NEW '60 RENAULT
THE FASHIONABLE CAR FOR PRACTICAL PEOPLE

ONLY \$99 DOWN!



ONLY \$44 A MONTH!
\$1370
ALL THESE FEATURES INCLUDED AT NO EXTRA COST:
* 4 door sedan
* 40 mile per gallon economy
* Torque-bar ride
* Heater-defroster
* Turn signals
* Heavy duty 12 volt electrical system
* Semi-flexible safety steering wheel
* Dual glove compartments and sun visors
KING SIZED TRADE-IN!

RENAULT Dauphine—SEE IT—DRIVE IT—NOW!
IMMEDIATE DELIVERY

HODGES FOREIGN SALES INC.
23100 WOODWARD LI 7-8800
FERDALE JO 6-7167

\$644,281 Spent On New B'h'am Improvements

Two-thirds of the capital improvement program in Birmingham this fiscal year has been paid by the city, commissioners learned Monday night from City Manager L. R. Gare.

In a summary designed to aid in May's budget considerations, Gare said \$644,281.78 worth of projects have been or will be completed by the end of June.

The city paid \$441,811.92, with private property assessed for the difference, Gare said.

Widening portions of W. Maple, Lincoln, Eton; and the Baldwin public library \$184,000 addition (now under construction, and the largest single improvement during the year).

He proposed \$730,400 worth of projects for 1960-61 budget consideration. City share would be \$265,500, he said.

Primary improvements on this list are new bridges for Willets, Northlawn and Oak crossings of the Rouge; a new \$42,000 aerial fire truck; downtown sidewalk re-pave; and appreciable street re-surfacings and several alley constructions.

HIGHER EARNINGS ON YOUR SAVINGS

4%

CURRENT RATE ON ALL SAVINGS



ASSETS OVER FIFTY-THREE MILLION DOLLARS

CAPITOL SAVINGS & LOAN ASSOCIATION
27215 SOUTHFIELD AT 11-MILE RD.
KE 6-7125 EL 6-7770

Downtown Office: Washington Blvd. Bldg. — WO 2-1028



Established in 1890 — Never missed paying a dividend. 70 years of sound management — your assurance of security. Assets now over fifty-three million dollars.

SAVINGS IN BY THE 10th OF DECEMBER EARN FROM DECEMBER 1st.

FOR THE HARD-OF-HEARING

THE WORLD'S FIRST High Fidelity HEARING AID

the new **ZENITH** EXTENDED RANGE

98% wider frequency range brings in sounds never before reproduced through present conventional hearing aids.

- Far less distortion and background noise
- Sounds amplified more faithfully

PROOF IN 30 SECONDS
A 30 second test is all that is necessary to convince most anyone with a hearing loss that here is the closest thing to normal hearing—next to normal hearing itself.

YOU OWE IT TO YOURSELF TO TRY THE ZENITH "EXTENDED RANGE"

ZENITH "LIVING SOUND" HEARING AIDS
Come in today or phone for a home demonstration.

—PRESCRIPTION DEPARTMENT—

WILSON DRUG CO.
DEPENDABLE PRESCRIPTION SERVICE
WOODWARD at MAPLE PHONE MIDWEST 4-5600

Professional Service to the Birmingham Area for Over 37 Years

We Cordially Invite You To Attend Our Formal

GRAND OPENING

THURSDAY, FRIDAY, SATURDAY
MARCH 10 - 11 - 12 7:30 A.M. TO 9:30 P.M.

- ☆ FREE GIFTS
- ☆ REFRESHMENTS
- ☆ FREE 50 TICKETS TO "The Music Man"

Immediate Delivery

FORD Falcon
EASIEST CAR IN THE WORLD TO OWN

COME SEE & DRIVE THE THRILLING NEW 1960 FALCON WAGON

HARRY DEMOREST FORDLAND
WOODWARD, Just North of 8-MILE LI 3-2100
NEWEST AND FASTEST GROWING FORD DEALER