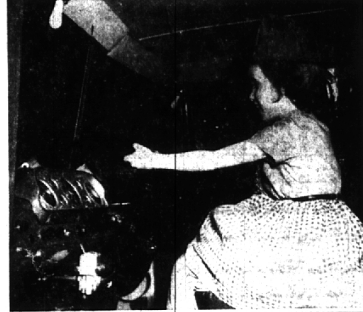


Franklin Volunteers Dedicate Their New Fire Hall

FRANKLIN—Volunteer fire department commissioners, Troop B-11 boy scouts and nearly 400 villagers solemnly stood at attention, the hand played and a new flag slid up the tallest flag pole in the area Sunday at dedication ceremonies for the Franklin Volunteer Fire department's new hall. Below, Robert Emarick of GM shows Franklin volunteer police officer Kenneth Bristol the fine points of the

new ambulance, a personal contribution of Semon Knudsen which was one of the highlights of the 2 to 5 open house. (Right) Nancy Bailey symbolizes the glorious time had by village kids. Wearing a souvenir red plastic fireman hat and a proud smile, she was one of hundreds of children who "tried" the equipment and rolling stock.



Franklin
BINGHAM FARMS — WOODCREEK FARMS
Nita Hard — MA 6-3224

Franklin Dedicates New Fire Station

FRANKLIN—The village certainly had a field day with its Volunteer Fire department, Sunday. It is estimated that about 500 people in assorted sizes and ages attended the open house at the new hall.

About 350 were present at the drums rendered a spirited beginning note. The huge door of the fire hall was thrown open so the crowd could watch the solemn flag raising ceremonies with boy scouts Wood Creek Farm's Dr. Conrad from Troop B-11 standing at attention (and Mrs. Lann on the bass tenton, knee deep in fresh snow.

And, as the band played the national anthem, a brand new flag slid up the rope to crest the new flag pole donated by a former Franklin resident, William McCuddy.

REV. ROBERT SEARLES delivered a brief benediction. Commissioner William Albee introduced his fellow commissioners and accepted a key to the special alarm communication system from Shelley Pinkerton of the Dictograph company. Many acknowledgements were made for innumerable donations of equipment and services which emphasized the enormity of the co-operative effort that has made this Volunteer and privately incorporated fire department so unique.

Albee paid a special tribute to the wives and families of the volunteers for their contribution of patience and waiting. A brand new Pontiac ambulance, fully equipped for emergencies was presented as a gift of Bingham Farms neighbor, Semon Knudsen. Robert Emarick of GM appeared on behalf of Knudsen and stressed that the car was not a gift of the company but a personal contribution to be used jointly by the fire group and the Franklin Volunteer police force.

TWO HUNDRED FIFTY red plastic hats from the Greater Detroit safety council were issued to small fry. Hundreds of homemade sandwiches and cookies disappeared with gallons of hot coffee and punch, provided and served by the wives of the volunteers.

The children scrambled over the two shiny trucks, both fairly recent acquisitions. Nobody seemed to care, on this happy day, if they did leave their sticky fingerprints on the glistening surfaces.

VISITORS SWARMED all over the story and a half building that replaces the old community hall which burned two years ago. They admired the intricated communications center, the automatic alarm system, the commissioners conference room, the meeting hall on the second level, the furnace and pump room, the bright brass emergency pole . . . nothing was missed.

They signed a guest book, chatted, and eventually left, assured that their annual membership dues of 15 dollars a year was well spent . . . and their homes well protected.

Having a gay time, far away from Franklin, were the Richard Pass of Tudor Lane. Contemplating moving by summer, the Pass' spent last week in Phoenix, Arizona, certifying the lay of the land for their future home.

In Phoenix, also for the next three weeks, is assistant postmaster Dan Brown . . . just vacation-



Ready to Bowl

FRANKLIN—For a preliminary sample of the Saturday bowling clinic, Martha Burger got help from her mother, Mrs. John Burger, last week at Star Lanes, Northwestern highway. Waiting for their turn were John Burger, Bob Hedquist, Susan and Gerri Lepine, Cheryl Hedquist and Bill and Cindy Madalin. Bowling fundamentals will be shown at the clinic, sponsored by the Franklin community association youth committee headed by Len Madge. Scheduled for 12:30 p.m., it will be open to youngsters from Franklin village, Wood Creek Farms, Bingham Farms, Meadowlake, Wigg Lake, and parts of Farmington and Bloomfield townships. Dr. and Mrs. Burger are among those handling reservations.

Welcome, Teacher!

BINGHAM FARMS—A 40th anniversary is well worth celebrating, so Mrs. Carson C. Bingham and Mrs. R. S. Plexico (center) welcomed Ruth (Mrs. Charles J.) Shain last week to a luncheon honoring her in her 40th year of helping Birmingham area women keep well-informed. Mrs. Plexico accompanied Mrs. Shain to the Bingham home on Bingham road following the guest of honor's regular Tuesday morning class in international relations. Mrs. Plexico and Mrs. Bingham were co-hostesses to 50 guests for the luncheon honoring the prominent civic leader, of Pierce street, Birmingham.

Franklin Association, Zoning Amendment Public Hearing Set

FRANKLIN—A public hearing will be held at 8 p.m. March 5 in the village office to discuss a proposed amendment to the Franklin Community association in the wording of section 3.3B of the zoning ordinance.

The hearing is to be conducted by the planning commission at the request of the council. The amendment would make it possible for the association to appeal for use of residential land for recreational purposes. Privately incorporated, the association is now a quasi-public organization, dedicated to providing social and recreational programs for Franklin and its sister communities.

Property owners of the village are invited to attend. The planning commission will base its recommendations to the council on the sentiments expressed at the hearing.

Cemetery Auxiliary

FRANKLIN—The Franklin Cemetery auxiliary meets March 10 for a 1 p.m. luncheon and business meeting at the home of Mrs. Herbert Master, 888 Ann street, Birmingham.

ing, but probably keeping an open mind to opportunity, if it knocks.

The William Winkler household on Franklin Hills drive has been a buzzin' place. Returning from sking at Boyne, Mr. with small sons Bill and Russ, the Winkler's are busy entertaining on weekends. A dinner party last Saturday honored Mrs. Winkler's sister from Adrian.

Next Saturday night they'll have dinner guests from Grosse Ile and Grosse Pointe. They'll also be welcoming back Winkler's mother who has been vacationing in Sarasota, Fla. for the past three weeks.

The Dorchester Hills birthday club held its monthly luncheon at the Hunters Whip recently. Mrs. Mel Steckley and Mrs. Leonard Catton were co-hostesses for the occasion.

The 12 couples who make up the bi-monthly supper club are stably agreed to overlook the fact that they have no beach when they hold a Hawaiian night party at the home of Mr. and Mrs. Ernest Hoisington on Cromwell this Saturday. Guided by the theme, guests are bringing component courses to the dinner which lends an element of surprise each time.

WOOD CREEK FARMS—Mrs. Richard Taylor of Westbrook road was hostess for the dessert and monthly meeting of the Wood Creek women's group, Tuesday.

Mr. and Mrs. Warren Bushman of Greenbriar were turnabout hosts recently. They entertained Dennis Halloran and Kenneth Bishop of Lester, England, who are their hosts several years ago when the Bushmans were in Europe.

Southfield News Briefs

Upper Teen Club Holds Open House In New Building

SOUTHFIELD—Southfield Upper Teen club held open house in its new building Sunday marking the end of three years planning and work for the new clubhouse at 25300 W. Nine Mile road.

Organized for Southfield and Lathrup boys from 17 to 18 years old, the club formally opened its doors of its \$25,000 building. Because of donated materials and labor, the actual cost was \$10,000.

The facilities include a bowling alley, billiard table, ping-pong table, exercise and gym equipment

and room for dances and parties. Members pay \$1 when they register and \$1 each month for dues which cover operating costs.

The club has the support of the police departments of both Lathrup and Southfield. The Upper Tees club was organized by Clarence Durbin, a builder and chairman of the zoning board of appeals, supervised construction. Architectural work was done by Architect Gilbert W. Savage.

Southfield, State To Meet Saturday On S-Way Route

SOUTHFIELD—Southfield PTA will present a panel discussion on scholarships and the importance of planning a child's future in the seventh and eighth grades at 8 p.m. March 10 at the school.

The panel members include a counselor from Southfield high school, a representative of Kalamazoo college and an instructor from the University of Michigan. A question-answer period will follow the discussion.

NEED SOMETHING FOR YOUR HOUSE? Then locate it by reading or using the Classified Ads in The Eclectic each week.

east-west expressway route. The last meeting was postponed because the state highway department was unable to prepare location maps for the quarterly extension of the expressway in time for the meeting.

A. E. Munson, city plan consultant, and the city plan commission will use the time to prepare their own proposed route location maps.

Southfield Ten PTA Slates Panel Talk

SOUTHFIELD—Southfield PTA will present a panel discussion on scholarships and the importance of planning a child's future in the seventh and eighth grades at 8 p.m. March 10 at the school.

The panel members include a counselor from Southfield high school, a representative of Kalamazoo college and an instructor from the University of Michigan. A question-answer period will follow the discussion.

Here's YOUR OPPORTUNITY To Own
a full
ACRE ESTATE
in
Beautiful HAWAII!

A big profit-potential investment or a retirement paradise

Now you can own land in the lush tropical paradise of Hawaii. Most of Hawaii is owned by the government and a few families and is not for sale. Only a small portion is available for purchase. There already has been a significant increase in land values since these estates first were offered 11 months ago—good reasons why more than 3,000 acres already have been sold.

HAWAIIAN PARADISE PARK is the only coastal subdivision available. The panoramic beauty of the Pacific is within view of all the estates. All titles to the land are guaranteed by the state of Hawaii.

\$165 Down \$10 Per Month
1 Acre Lots, 135-Ft. Frontages, Full Price \$895

PARTRIDGE & ASSOCIATES FE 4-3581 1650 W. Hemen—Pontiac	WOLCOTT REAL ESTATE LI 6-3300 708 N. Woodward—Royal Oak
---	--

ERB-RESTRICK, of Birmingham, INVITES YOU

to see the all new "DeWalt 925" in operation by factory representative Saturday, March 5th (8 a.m. to 3 p.m.)

<p>MAHOGANY V-GROOVE PANELING Unfinished only \$4.88 sheet 1/2" - 4 x 8" Sheet</p> <p>FIR PLYWOOD 1/2" - 4 x 8 \$3.39 sheet</p> <p>2 x 4s—8 FOOT low as 39c Also 59c & 79c</p> <p>PLYSCORE 1/2" - 4 x 8" \$3.20 sheet</p> <p>SHEETROCK 1/2" - 4 x 8" \$1.49 sheet</p> <p>1 x 3 FURRING 3c ft.</p>	<p>● Totally enclosed 2 H.P. motor ● Dual Arbor Spindle ● Electro Mechanical motor brake ● Safety Drop Leaf Table</p> <p>DeWalt gives you all these extra values and others at no added cost. High trade in allowance on any tool. Free shipping. Low down payment. Factory list price \$249.00.</p>	<p>SO EASY TO USE! Dutch Boy NALPLEX FLAT WALL FINISH Really odorless Clean up with water Re-use rooms in 2 hours</p> <p>SALE \$19.95</p> <p>● Up to 8'9" Ceiling Height ● Takes 25 1/2" Opening</p>
<p>INSULATION Loose Rock Wool per bag 88c</p> <p>WHITE PINE SHELVING 1 x 12 14 1/2c lin. ft.</p>	<p>Folding Stairway</p> <p>Now \$4.95 gal.</p> <p>SALE \$19.95</p> <p>1 x 2 FURRING 2c ft.</p>	

Man will call at your convenience!
FREE ESTIMATES

ERB-RESTRICK

LUMBER COMPANY

425 S. ETON (South of G.T.R.R. Depot) BIRMINGHAM
PHONE MI 4-5300

Hours: Mon.-Fri. 8-5
Saturday 8-3