

The older one gets the shorter, it seems, does each year last. As children, the days passed slowly . . . the distances seemed greater. Perhaps, as one adds years, his perspective is changed on many conditions . . . and that's as it should be, no doubt. It is true that the busiest person has no time to watch the clock—so his day passes quickly. However, each day does contain as many minutes as it did a million years ago.

The Birmingham Eccentric

BIRMINGHAM, MICHIGAN

Thursday, March 3, 1960

SECTION D

The Old Red Barn Ain't What It Used to Be

Kandahar Barn Built By Skiers for Skiers

By SHIRLEY ADAMS
Society Editor



Skis, Poles and Determination

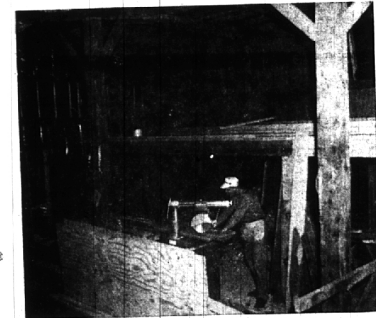
The Oakland county Republican group heading for the Boyne Ski area are Gail Rowe, Irene Giacobbi, Barbara Borgen, Bill Powell, Jay Urganhart, Fred Haubold, Phil

Seelinger, Sue Atherton and Al Pidgeon. The group stayed at Kandahar Barn for the weekend. Irene Giacobbi is president and Bill Powell is vice president.



'Chow Time'

Enjoying a hearty meal after skiing at Kandahar Barn are (from left) Marie Stevens, Joe Bianco, Helen Love, Phil Seelinger and Gail Rowe; looking in the dining room are (from left) Len Frankwitz, Betty Ellis and Sid Coale; across the table are (from left) Barbara Borgen, Bill Powell, Marilyn Smith and Al Magnus, all of the Birmingham area.



Before

Any weekend in 1958 could find Len Frankwitz and his partner busy with power saw and hammer working towards completion of their pet project, Kandahar Barn. In planning the barn, they developed it to take care of the "down below skier who makes a dash up to Northern Michigan after work Friday to enjoy his favorite sport.



After—

. . . a year of hard work and planning the barn is completed to accommodate skiers. It's now a comfortable, casual lodge with a rustic atmosphere unique in the Midwest. . . a relaxing blend of redwood, knot-pine and old barn beams. In the picture are guests relaxing around the fire (just too pooped to participate).



Giving Tired Muscles a Rest

Relaxing after a hearty dinner, seven Birminghamites discuss the day's skiing. They are (from left) Mrs. Vern Haack of Coolidge road, Stew Neilsen of Windemere, Carolyn Peterson of Coolidge road, Marylyn Robertson of Graefield, and standing (from left) are John Dyrud of Villa, Vern Haack, and Ross Morgan of Yosemite.

Authorized Distributor for MG, Morris, Austin & Rover, Jaguar

THE NEW **MG '1600'**

IS ON THE MOVE!

More Go!—More Stop! High spirited new horses champion! at the bit . . . rugged new disc brakes to keep 'em on hand! Sporty roadsters, sports coupes . . . wire or disc wheels . . . eye popping new colors . . . twelve months' warranty. That's the new MG '1600'!

Supply fact Arrange for a test-drive today.

FALVEY MOTOR SALES COMPANY
LI 3-5000
22600 Woodward Ferndale

Prescription for Profit: A Want
Ad by phone or mail.

THINKING OF SHUTTERS?

OF

SHUTTERS?

SEE US FIRST!

FOR STOCK WHITE PINE MOVABLE SLAT BLINDS

FROM

\$110 ea.

(Price for 6" x 20")

FOR SALOON TYPE DOOR BLINDS

from

\$1195 PR.
(30 x 48)

COMPLETE WITH HARDWARE

FOR CUSTOM DOOR WINDOW BLINDS

IN WHITE PINE OR OTHER WOODS

CALL US FOR FREE ESTIMATES

WE WILL HELP YOU DO IT YOURSELF OR WILL RECOMMEND A QUALIFIED CONTRACTOR. CALL TODAY!

Birmingham Lumber AND SUPPLY COMPANY, INC.

1025 HAYNES STREET
PHONE MI 4-3636

Between Hunter & Adams—5 Blocks South of Maple
Hours 7:30 to 5:00 Mon. thru Fri.; 7:30 to 1:00 Sat.

SEE or CALL US TODAY!