

Van Beau COSTUMES
DESIGNERS AND CREATORS
OF ORIGINAL COSTUMES

Your Choice From Over 2000 Rental Costumes
Or We Will Make 1 or 100 For You
For Sale or Rent

WIGS AND THEATRICAL MAKE UP
NEW FANTASY WIGS FOR SALE!

2823 N. Woodward Ave.
R. SHULTZ

Royal Oak, Michigan
Liberty 9-5200

Our Bermuda Gadabout...

orthobermuda short that grew... another N.S. inspiration for easy living. Slip on in the morning, tuck in, add a blouse for shopping. Shown in madras, also comes in linen. \$8-16.

14.95

THE VILLAGE STORE
GROSSE PTE. BIRMINGHAM SAGINAW ANN ARBOR
TU 4-7180 MI 4-7100 PL 2-5797 NO 5-8682

Oxonian Gadabout

Crisply tailored of fine yarn-dyed Oxford cloth, this shirtwaist will make light of your busy life. In blue, or olive. \$8-16.

14.95

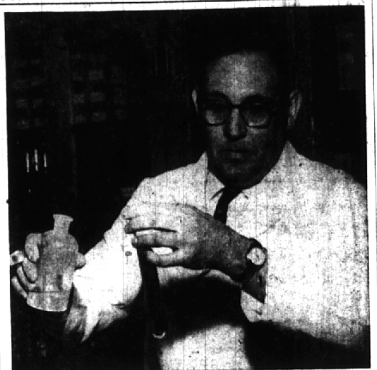
Add 3% S.T. 5% Post. Most orders mailed.

THE VILLAGE STORE
GROSSE PTE. BIRMINGHAM SAGINAW ANN ARBOR
TU 4-7180 MI 4-7100 PL 2-5797 NO 5-8682

On a Spring Morning...

Venture forth in Mr. Morr's crisp Arnel tweed separates. All washable and creaseless. Pleated skirt, easy cardigan jacket and chambray striped blouse come in blue or beige. Skirt 12.95. Jacket 14.95. Blouse 7.95. All 6-16.

THE VILLAGE STORE
GROSSE PTE. BIRMINGHAM SAGINAW ANN ARBOR
TU 4-7180 MI 4-7100 PL 2-5797 NO 5-8682



From Shell to Cornell

Charles Breedlove of Bloomfield hills, who heads the science department at Henry Ford high school, Detroit, will spend this summer at Cornell university on a Shell merit fellowship. About 100 instructors were selected from approximately 1,000 applicants across the country.

Oil Pays for Summer Work

Charles Breedlove, science department head at Henry Ford high school, Detroit, has been awarded a Shell merit fellowship to Cornell university this summer.

Breedlove, who has taught chemistry for 22 years, is one of 100 outstanding high school mathematics and science instructors from the United States and Canada selected on the basis of merit and demonstrated leadership qualities.

While at Cornell, Breedlove and other teachers will receive training in mathematics, chemistry, physics, and educational techniques, as well as first-hand knowledge of the applications of science and mathematics in industry. Lectures by some of the nation's top mathematicians and scientists and weekly field trips to research laboratories and industrial plants are included in the seminar program.

A native of Dallas, Texas, and a graduate of Southern Methodist college, Breedlove has received graduate fellowships to the Massachusetts Institute of Technology, Wayne Medical school and Sarah Lawrence college for advanced work on various educational problems.

He resides with his wife, Kathryn, at 1807 Mohawk court, Bloomfield Hills. They have two children, Susan, 16, and David, pupils at Wilby Groves High school.

First of the Signs—BAA's Spring Term

A sign that fair weather is near comes with the opening of spring registration for classes sponsored by the Bloomfield art association.

Spring term, which officially begins March 14, will offer a wide scope of artistic training for area residents, members or non-residents.

Contemporary jewelry, taught by Nancy Fanzini, will meet on Mondays from 7 to 9 p.m. Open to beginning and advanced students, the class is for all interested in designing and creating contemporary jewelry. Individual instruction will be given in silver, gold, stone setting and other techniques. Class begins March 16.

CLAIRE LEVINE will again instruct teenage girls in creative dance, stressing movement, materials and self expression in dance. The class will be at 3:45 p.m. Thursdays, class begins March 11 at the Birmingham YMCA, 100 E. Lincoln.

ALBERT MULLEN will teach studio art for men only from 7 to 9 p.m. Mondays. Stressing art for the part time student, Mullen will emphasize the development of concept and skill to culminate in drawings and sculpture. Spring term begins March 14.

SCULPTURE COMPOSITION for men and women, beginning and advanced students in the media of clay, plaster, wood and stone, will be instructed by Svea Kline. Her classes will be Mondays from 9:30 a.m. to noon; 1 to 3:30 p.m. and 7 to 9 p.m. Classes begin March 14.

PORTRAIT PAINTING and drawing, taught by Mildred Williams, will be Tuesday mornings from 9:30 to noon. The class is open to both men and women, beginning and advanced students. Drawing and painting will be from the costumed model. No specific style or manner is stressed. Individual instruction will be given. Spring term begins March 15.

ADA STEINBERG will instruct in water color painting for both men and women, advanced students only. Classes in still life, flower studies and landscapes will be held Wednesdays from 1 to 3:30 p.m. Spring term begins March 16.

LIFE DRAWING for men and women, beginning and advanced students, will be instructed by Clifford West on Tuesdays from 7 to 9 p.m. and Wednesdays from 9:30 a.m. to noon. Classes begin March 15 for the Tuesday sessions; March 16 for the Wednesday classes.

KATHLEEN BIRCH will instruct two classes in oil painting for men and women, beginning and advanced students. Classes are slated from 9:30 to noon and from 1 to 3:30 p.m. on Thursdays. Classes begin March 17.

JOHN W. MARTIN will head the Saturday young people's workshop. There will be two sessions beginning March 19 through April 30. Grades seven through 12 attend from 9 to 11 a.m. Grades three and four attend from noon to 1:30 p.m.

Tuition is \$12 for the course, including materials. All other Bloomfield art association classes are \$25 for the ten week session with a 20 per cent discount for association members. Interested artists, members or non-members are invited to sign up for the classes.

A YOUNG PEOPLES Studio Theatre is also sponsored by the art association. With spring term underway March 7, the week schedule includes dramatics (7 to 9-year-olds), from 4 to 5 p.m. Mondays and conversational French (7 to 9-year-olds) will be offered from 1 to 2 p.m. Tuesdays. Conversational French will be offered at the same time for 10 to 15-year-olds.

BOTH DRAMATICS and set design classes are scheduled from 1 to 6 p.m. Wednesdays from 1 to 5 p.m. On Thursdays from 4 to 6 p.m. dramatics will be offered for persons 16 years and older. Conversational French is slated from 7 to 9 p.m. on the same group.

Advanced dramatics and brush-up for adults interested in speech and dramatic refresher course will be from 4 to 6 p.m. Fridays.

CLASS ENROLLMENT is limited to 20 persons. Tuition is \$40 per semester for each child. An additional \$10 will enroll two youngsters. A make-up kit is included in the price.

CONVERSATIONAL French tuition is \$35 per semester. Enrollment for a second child in the family will be an additional \$7. Half-hour French instruction for children from 7 to 9 years is \$15 with an additional \$5 for a second child in the family. Classes will be for ten weeks.

Journalism Field Discussed on TV

What sort of preparation is necessary for a young person hoping to enter the field of journalism? How much schooling should he have? What sort of an income can be expected? Are there opportunities for advancement in the newspaper field?

These questions and many others are answered on the first program in the new University of Michigan television series Career Spotlight aimed at helping young men and women choose future careers. The program, Newspapers, will be shown at 9:45 a.m. March 13 on WXYZ-TV.

Special guest on the program is Frank Angelo, managing editor of the Detroit Free Press. Angelo draws upon his extensive background in newspaper work to answer the questions put to him by two high school students, Carol King, a senior at Seaholm high, Birmingham, and Rowell Huesmann, a senior at Cooley high, Detroit.

Selling your home? Advertise it in the "For Sale-Houses" column of The Eccentric.

Nine Good Reasons Why The Birmingham Eccentric Is The Outstanding Advertising Medium For Your Business!

Every possible assistance is provided in preparing copy and layout for your advertisement, by efficient well trained staff personnel.

Coverage of the outstanding "blue-chip" Birmingham-Bloomfield market is very high. The Birmingham Eccentric is read each week by an average of 69% of the families in the area.

Circulation is audited twice yearly by the highly respected Audit Bureau of Circulation. 12,220* families are reached by this newspaper, on an average, each week.

Editorial content is oriented to family and community. Because The Birmingham Eccentric is a family newspaper, it has wide appeal to all age groups, is read and re-read by the whole family.

News is eagerly sought out by our experienced editorial staff. Because of the excellent news coverage, the pages of The Birmingham Eccentric are thoroughly read, thus providing a new medium for your sales messages.

The Birmingham Eccentric has been awarded 20 different editorial awards since 1949, including twice, the National Editorial Association First Prize for General Excellence among all American Suburban Weeklies.

Rates are seventh lowest per thousand readers, among the 30 top weeklies in the Detroit area. This low rate enables you to utilize more space, and still stay within your budget.

Income is high for those families served by The Birmingham Eccentric. According to The Standard Rate and Data Service, the average consumer spendable income for this area for 1959 was \$10,611.

Constant effort is made by the advertising staff to provide quick and efficient service to advertisers. Help in merchandising is provided by staff members.

These nine points are just a few of the many factors which make The Birmingham Eccentric your best local advertising medium.

*Publisher's statement to A.B.C. for 6 months, average paid circulation to September 30, 1959

The "Total" Advertising Medium

The Birmingham Eccentric