

BUSINESS BRIEFS

Keaton Selected Best Salesman

Indianapolis Life Insurance company's field force wound up its record month's campaign with a record-breaking production of more than \$12,000,000. Top individual salesman was Charles E. Keaton, Jr., of 4420 Squirrel road, Birmingham.

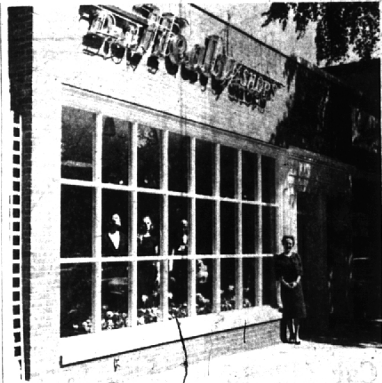
June 23, 1960 THE BIRMINGHAM (MICH.) ECCENTRIC 3-D

"We Serve the Suburbs"



... fine furnace oils see the new "Custom Mark II" oil furnace that's revolutionized oil heating

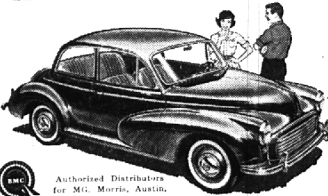
TORRENCE OIL Company
For Service Call:
MI 4-9000



New Healy Store Opens

A full line of both moderate and high priced dresses, jewelry, hosiery, lingerie, hand bags and ready to wear is stocked by the new D. J. Healy Shop at 263 Pierce, between Maple and Merrill. Pictured is Miss Dessie Dunn, manager of the store. For other business activity in the area, see page one.

MOR MOR MOR MORRIS
quality per dollar!
miles per gallon!
get up and go!



FALVEY
From as low as \$1495. P.O.R. MOTOR SALES COMPANY
LI 3-5000
22600 Woodward Ferndale

CALL HAGOPIAN FOR "MAGIC METHOD"

CARPET CLEANING

- Lowest Prices
- Fastest Service
- Finest Workmanship

JO. 4-5580

Hagopian AND SONS
15180 W. EIGHT MILE RD.

Doyle Accepts New Position

L. John Doyle, 6080 Worlington, Birmingham, was appointed field sales manager—Large L.A.M.P. Products of Sylvania Lighting Products, a division of Sylvania Electric Products, incorporated.



Doyle's areas of responsibility will include all field sales activities, national accounts and sales management development. He will be located at the lighting division headquarters in Salem, Mass., where he, his wife and son will reside.

Gibson Opens Building Co.

Richard Gibson, 927 Ann Birmingham, has opened a building firm under the name of Gibson Construction company. Gibson has been associated in Real Estate and Building in this area for the past ten years.



Gibson's firm is specializing in manufactured homes. He states that this type of home, which is produced in large volume in the same manner as automobiles, will afford greater living area for the family who is seeking more living area on a limited budget.

He also states that the manufactured home can be personalized with little additional cost. Gibson Construction company will also build custom made homes. A model is featured at 2505 Lahser just south of Square Lake road in Bloomfield township.

WE'RE GROWING!



NEW LOCATION
STEWART'S FABRIC SHOP
202 E. MAPLE



Shop A & P the "Savings Store!"

CLOSED SUNDAY AS USUAL
This Year's Crop Gov't Inspected—Grade "A"
Oven-Ready

Turkeys
16 TO 20 LB. SIZES

LB. **39c**

"SUPER-RIGHT" Leg O' Lamb . . . LB. 69c
"SUPER-RIGHT" SMOKED OR FRESH Liver Sausage . . . LB. 39c

FRESH, CULTIVATED
Blueberries
3 PINT BOXES **1.00**

MEDDO-LAND FREESTONE ELBERTA

Peaches IRREGULAR SIZE PIECES . . . 4 29-OZ. CANS **89c**

IONA BRAND
Tomatoes . . . 5 29-OZ. CANS **99c**

SPECIAL AT A&P!
Mazola Oil . . . GALLON CAN **1.77**

Sweet Pickles WEIDNER'S CUCUMBER SLICES QT. JAR **29c**
Welchade GRAPE DRINK . . . 4 32-OZ. CANS **99c**
Ripe Olives EARLY CALIF. SELECT 4 21-OZ. CANS **89c**
Tang 7-OZ. JAR **35c** 14-OZ. JAR **55c** 21-OZ. JAR **69c**
Pork & Beans SULTANA . . . 52-OZ. CAN **29c**
Bisquick 60-OZ. PKG. **59c** 40-OZ. PKG. **39c**
Flour GOLD MEDAL 10-LB. BAG **89c** 5-LB. BAG **45c**

NUTLEY BRAND
Margarine 6 1-LB. CTNS. **89c**

Ajax Cleanser . . . 2 14-OZ. CANS **31c**
Crisco Shortening 4c OFF LABEL . . . 3 LB. CAN **65c**
Ivory Soap LARGE SIZE . . . 2 CAKES **33c**
Ivory Soap PERSONAL SIZE . . . 4 CAKES **27c**
Duz PREMIUM IN PACKAGE . . . 32-OZ. PKG. **55c**
Oxydol . . . 46-3/8-OZ. PKG. **79c**
Dreft . . . 2 15-OZ. PKGS. **67c**
Spic and Span . . . 54-OZ. PKG. **88c**
Ivory Snow . . . GIANT PKG. **77c**
Fab WASHDAY SOAP POWDER . . . GIANT PKG. **77c**
Tide . . . GIANT PKG. **77c**
Ivory Soap . . . 4 MED. CAKES **41c**
Zest Soap BATH SIZE . . . 2 CAKES **43c**
Palmolive Soap Reg. Size 4 for 41c Bath Size 6c Off Label 2 FOR **23c**
Rinse Blue 54-Oz. Pkg. King Size 4 for 41c 2 LARGE PKGS. **65c**

"SUPER-RIGHT" QUALITY
PORK LOINS

FULL 7-RIB PORTION **29c**

Loin Portion LB. 39c Center Pork Chops LB. 79c

"SUPER-RIGHT" MILD, MELLOW—12 TO 16 POUND
Whole Smoked Hams LB. **49c**

"SUPER-RIGHT" **Corned Beef** FLAT CUT LB. 69c POINT CUT LB. **59c**

A REAL VALUE
BANANAS . . . LB. **10c**

Instant Chocolate BORDEN'S DUTCH 2-1/8 6-OZ. CAN **79c**

Mayonnaise ANN PAGE SPECIAL DFER . . . QT. **49c**

Royal Gelatin . . . 4 3-OZ. PKGS. **35c**

10 great new recipes
Chicken Dinners in-a-dish
JULY Woman's Day
now on sale 10¢

WISCONSIN SHARP
Cheddar Cheese
LB. **59c**

KRAFT'S CHEESE SPREAD
Cheez Whiz . . . 8-OZ. JAR **29c**
SUNNYBROOK GRADE "A" Large Eggs 2 DOZ. **89c**
Silverbrook Butter . . . 1-LB. PRINT **63c**
Sunnyfield Butter . . . 1-LB. QT'S. **65c**

RIG 20c SAVINGS—JANE PARKER
Blackberry Pie
8-INCH SIZE **39c**

SAVE 10c—JANE PARKER—CRESCENT SHAPED
Pound Cake Golden or Marble HALF BING **29c**
Grazed Donuts JANE PARKER SAVE 10c . . . DOZ. **33c**
Rye Bread JANE PARKER—PLAIN OR SEEDED . . . 1-LB. LOAF. **17c**
Sliced Rolls FOR HOT DOGS OR HAMBURGERS . . . PKG. OF 12 **31c**

555 Adams: Open 9-9 Mon. - Fri. - Sat 8-9
210 South Woodward: Open 8-6 Mon., Tues., Wed. & Sat. - 8-9 Thurs. & Fri.
Closed Sundays As Usual
All prices in this ad effective thru Sat., June 25th in all Eastern Michigan A&P Super Markets



The dinner party that gets somewhere has Jaguar cigarettes

Giving a dinner party?

Brighten the occasion with Jaguar Gold Tipped Cigarettes. Elegant but not pretentious . . . with a distinctive filter that lets the true tobacco taste through. Jaguar Cigarettes are not sold everywhere but you will find them at better places.

... pay a few pennies more and go first class!



Stanhope Bros., Philadelphia