

Firm Promotes Two Residents

Richard P. Monley, 1561 Witherbee, Birmingham, has been appointed assistant to Robert L. Garrison, 3290 Franklin court, Franklin, senior vice president of the consumer products group of MacMaster, John & Adams advertising agency. In his ten years with the agency, Monley has worked extensively on the accounts in the Bloomfield Hills offices of the agency both on client contact and account management. Patrick D. Beece, 3627 Middlebury Lane, Birmingham, has been appointed account supervisor succeeding Monley. Both men will headquarter in the Bloomfield Hills offices of the agency.

BUSINESS BRIEFS

Bell Promotes 2 Men In Accounting Division

Two local men have been appointed by the Michigan Bell Telephone company to new top level posts in the company's accounting department.

Ralph W. Luebke, 1854 Stanley Blvd., Birmingham, was named division revenue accounting manager of Michigan Bell's southern division at Grand Rapids. Promoted to succeed Luebke as the company's data processing manager was Garry J. Pasman, 2706 Berry Dr., Bloomfield Hills, who had served as assistant division accounting superintendent-machine operations prior to his latest appointment.

IN HIS NEW POST, Luebke will supervise the company's revenue accounting operations throughout the southwestern part of the state. In Birmingham, he was a member of the Lions Club, and served as advancement chairman of the Pierce School boy scout committee.

Resident Elected Board Chairman

Roger A. Yoder of 520 N. Glenhurst, has been elected chairman of the board of the Controllers Institute of America, effective Sept. 1. Yoder, who is vice president - finance, Detroit Steel corporation, will succeed J. McCall Hughes, executive vice president, Mutual of New York. He was chosen Saturday by the directors at a meeting in conjunction with the Institute's Midwestern Area Conference, held at the Schroeder Hotel.

Firm Appoints Local Officers

Clifford N. Stanton, 797 S. Glenhurst, was elected president of Electro Methods Co. of Royal Oak, electrical discharge production machining specialists. Other officers elected were: Wendell G. Moww of 2029 Amberly Road, vice president and Garrett H. Moww of 654 Overhill Road, treasurer.

Griscom To Attend Insurance Confab

George E. Griscom, 256 Abbey, Birmingham representative of the Lincoln National Life Insurance company and a member of the Birmingham representative of the attend a three-day sales conference in Hot Springs, Virginia, June 26-29.

Ex-Staffer Named Publication Editor

Norman E. Douglas of Clawson, MI. Screenings, the employee former Birmingham Eccentric reporter and photographer from division of United States Steel corp. 1952-55 has been named editor of the publication.

WHERE TO?

Whether you go East or West, we have a tour sure to please.

Cartan's Deluxe Western Circle Tour
Mexico "Gay Caballero" Tours

Escorted (Motor Coach) De Luxe New England Tours

Birmingham Travel Service

379 HAMILTON



MI 4-5711

Pleasant Offices



Here your requirements and your wishes are given careful consideration and details of arrangements may be discussed in a completely relaxed atmosphere. Here you will find that no detail or request is too small or large to be honored. A visit will prove to you that beauty, dignity and the highest type of personal service costs no more. For consultation or a visit, call Liberty 9-0500.

Wm. VASU Funeral Home
4375 N. Woodward Ave., between 13 & 14 Mile Roads
Liberty 9-0500



PASMAN



LUEBKE

of the Pierce School boy scout committee. Luebke's wife, Bernice, and their three children, Thomas, 12; Daniel, 10; and Mary, 7, will join him in Grand Rapids at the close of the school term.

PASMAN TAKES UP his new duties in Michigan Bell's accounting center at Southfield and North-western highways. After joining Michigan Bell in September, 1946, Pasman held various assignments in several Michigan cities until 1956 when he was transferred to the chief engineer's organization of the American Telephone and Telegraph company in New York. He returned last September.

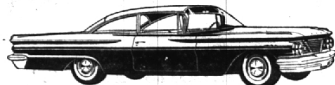


RENTAL & SALES

- HOSPITAL BEDS
- BHD SIDES
- WHEEL CHAIRS
- WALKERS
- CRUTCHES

MICHIGAN FIRST AID
Invalid needs—sick room supplies
LI 2-3027 JO 4-6847
1621 S. Woodward, R. O.
3 doors north of 10 Mile

SPECIAL FOR ONE WEEK ONLY PONTIAC CATALINA



HYDRA-MATIC, RADIO, HEATER, OIL FILTER, FOAM CUSHIONS, TURN SIGNALS, CHOICE OF V8 ENGINES. ALL TAXES TRANSFER 800 x 14 TUBELESS-TIRES

NOW ONLY \$2538³⁸



ROYAL PONTIAC
Royal Oak

Oakland County's Volume Pontiac Dealer

"Evenings by Appointment . . ."

Our day doesn't end when the market closes

Many of our clients drop in quite often at either of our offices. They like to enjoy the pleasant relaxed atmosphere and watch our electronic quotation board, or discuss investment needs with one of our staff of investment specialists. We hope that you will find time to visit us, too.

But if it isn't convenient for you to come in, one of our staff members will be happy to drop in at your home—in the evening if you wish—and discuss your investment requirements, undoubtedly one of them is a near neighbor. Why not stop in soon, or call about an evening appointment.

MANLEY, BENNETT & COMPANY
MEMBERS NEW YORK STOCK EXCHANGE
Buhl Building, Detroit 26 Bloomfield Hills, Mich.
W. Woodward 5-1122 Jordan 6-4450
Enterprise 6209 (Dial "0") Midwest 7-0900

Bloomfield Office Open Saturdays—9 to 1

clothes calculated to please Dad



SHORT SLEEVE SUMMER SHIRTS

The popular short sleeve is correct for summer wear and leads the way to comfortable warm weather dress.

from \$4.50

BERMUDAS

We have a wide selection of bermudas or shorter lengths. Solid colors and patterns. from \$5.95

SUMMER PAJAMAS

Short sleeve styles in lightweight summer fabrics for cool sleeping. from \$4.50

NECKWEAR

Our selection includes all the popular summer shades. Always popular for gift giving. from \$2.50

MATCHING SWIMWEAR

Trunks \$4.95 Jackets \$8.95

Dickinson's
Wabeek Building Birmingham Saginaw at Lawrence Pontiac



Pontiac's Extra Measure: Better Control

The reason is this: The track (not the body) is wider than any other car. The result is astonishing. You corner more securely, cruise with more confidence, hold a truer course in traffic. The best way, in fact, to measure Pontiac's Wide-Track Wheels is from the driver's seat. Put yourself in this remarkable position soon.



TRY THE EXTRA MEASURE OF A WIDE-TRACK DRIVE

SEE YOUR LOCAL AUTHORIZED PONTIAC DEALER... WHO ALSO SELLS GOODWILL USED CARS WITH MORE BARGAIN MILES PER DOLLAR

WILSON' PONTIAC - CADILLAC, INC.
1350 N. WOODWARD AVENUE, BIRMINGHAM