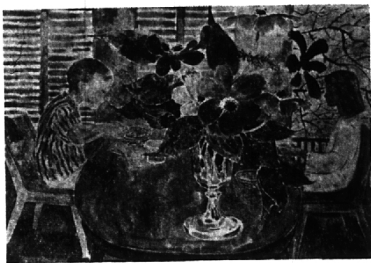


Want a good used car? Look in the Classified columns, under "For Sale—Automobiles."



Let Pictures Tell Your Vacation Story. Consult Us For Your PHOTOGRAPHIC NEEDS!

23rd Year Serving Birmingham  
**BIRMINGHAM CAMERA SHOP**  
168 South Woodward  
Midwest 4-0510



### 'Anemones and Children'

Frederick Simper, 3075 Spring rd., received the \$200 purchase prize contributed by Mrs. Lillian Henkel Haass and Robert H. Tannahill for his painting (watercolor), "Anemones and Children," entered in the 50th Exhibition for Michigan Artists which opened recently at The Detroit Institute of Arts and will continue through August 7. Other award winners from Birmingham were: Jamie Ross, 247 Merrick, for his painting, "Cliff Landscape"; Dan D. Stewart, 809 Henrietta, for his painting, "Villa-joyosa-Spanish Coast"; and John A. Jacobson, 343 Elm, for his charcoal drawing, "Night Landscape".

### Dandelions Vanish, Grass Grows Greener!



Hard to believe that one product can do both jobs? Scott's guarantees it! As you walk, the Scott's Spreaders automatically distributes astonishing Bonus® in just the right amount. Soon dandelions, buckhorn, plantain and similar weeds shrivel and die. As they do, good grass grows greener, thicker, healthier. Seeing is believing. All you risk is a half hour.

More and more folks are coming to us for advice on improving their lawns through an easy-to-follow Scott's Program. Come in anytime. We'll be glad to prescribe the correct Program for your lawn.

Save \$5.00! Scott's Spreader (16.95) plus Bonus (5.95) together only 17.90



JUNIPER 8-3600  
30 N. Main St.  
CLAWSON  
STORE HOURS  
Mon. - Fri. 9-8 p.m.  
Sat. 9 a.m. to 6 p.m.

**Maskill  
HARDWARE**

Liberty 9-3333  
4400 N. Woodward  
ROYAL OAK  
STORE HOURS  
Mon. - Fri. 9-8 p.m.  
Sat. 9 a.m. to 6 p.m.  
Sunday 10 a.m. to 2 p.m.

### DOWN TO EARTH

## Style Seekers Should Tour Area Gardens

By ALICE WESSELS BURLINGAME  
Special Writer for The Birmingham Eccentric

Springtime and early summer is garden tour time and the person who wishes to put added style into his garden will always find his answers in visiting the fine gardens of the area.

One of the fine institutions always ready to help with any minute problem is the Detroit Garden center, directed by the capable Ray Henslock. Every year Grosse Ile, Grosse Pointe and Birmingham-Bloomfield gardens are opened for garden admirers with the revenue realized used to finance the center's garden service expenses.

OUR BIRMINGHAM - BLOOMFIELD gardens will be open on June 18-19. I generally pick a garden named on the tour, start there first, buy my "railroad ticket" and then revel in the lovely gardens with their many lessons for all of us.

The mayor of our town, Mr. Howard Willitt, is a hostess in her garden. Yes, she gardens well, too. You should hear Howard's version of preparation for the tour. It sounds like a chorus sung by all the husbands as they put their shoulder to the wheel to have their gardens in "apple pie order". The area gardens will be open on June 18-19, this is a repeat on the time, see you there.

THE DOUGLAS CAMPBELLS and the James McWilliams opened their adjacent homes for the tour in Grosse Pointe. At the Campbell home, which is one of the earliest on the river, you see a quaint colonial home, painted white, with large specimens of rose hognonis on each side of the garden porch entrance. This rose shrub has thousands of yellow roses on it. The detail dramatized the lovely home as it emits a lifetime of charm.

They had used weed killer on their lawn and their 50-foot purple beech was showing the effects of assimilating the poison into its roots, according to the diagnosis of many tree specialists. File this fact away.

Both of these described homes had intimate areas of interest which called the visitor to different areas of the property.

LOOK YOUR GARDEN area over. Does it have "beckoning" corners with specific details? Quite often this is achieved by a small terrace with a bench on it, a piece of sculpturing, or an area with unusual plants.

To illustrate this point because I do feel as though our local gardens lack this characteristic re-created two or three times in the garden, I have made grandchild's path through a woody area with stepping stones as all children like to hop from stone to stone. Whimies are being added for them to look for among the plants.

THE WESSON SEYBURNS on East Jefferson have a landscaped grounds which I will match with

**Western College Names a Trustee**

John H. Forshev of 1530 Glenary road, has been elected a trustee of Western college for Women, Oxford, Ohio, for a nine-year term.

Forshev is senior vice president, director, and a member of the executive committee of Campbell-Ewald Company. His daughter Diana, graduated from Western College in 1950 and he was active in the Western Dads' club program.

He is a director of the Detroit area Boy scouts, a director of the National Boys football foundation, and chairman of the board of trustees of the First Presbyterian church of Birmingham.

the beat in Europe. As you enter the grounds there is a long, long driveway, at least a city block to the river, straight in line, bordered on each side with at least a 15-foot border of myrtle, with woods on each side. By the way the myrtle was in flower for the grand occasion. Accents of Azelia were seen in full flower at intervals.

Near this beautiful home at the end of the driveway, was a 200-foot tunnel formed by plane trees pruned so that the top was square and the edge sides were square. To the left of this grand approach is a formal garden and at this date it had thousands of tulips, labeled, planted in drifts, in formal box-wood geometric gardens. Green houses, a beautiful lawn sloping to the river and the green leaves of perennials told you the story of the splendor which continued through the season.

WHAT AN INSPIRATION for people to open their gardens for others to admire. When one walks through a beautiful garden the strife, the war rumors, the personality conflicts melt away as the lessons of the Good Life are shown in Nature's expression to us as living demonstrations of Courage, Confidence, and Hope for a Better Tomorrow. We leave such gardens better people due to the garden tour.

## Mother's Experience Can Benefit B of E

EDITOR'S NOTE: This is the pre-election statement of incumbent school board member Mrs. Mary B. Beier. She has been a member of the board since February, 1959, when she was appointed to finish the unexpired term of Mrs. Don Parry. Mrs. Beier is seeking election to a four-year post.

It seems important to me that at least one member of the school board be a mother with children in the school system.

Apparently this is something that the voters have considered important because for several years there has been at least one mother of school children on the board.

My original interest in the Birmingham school system came about when I regularly attended Board of Education meetings for a year as the representative of the Birmingham League of women voters.

IN THIS WAY, I became familiar with and interested in the problem of educating our children. Just as in any business, the key to the successful operation of our school system is in the personnel it employs. A competent professional staff of teachers and administrators is the key to a quality educational system.

While we must improve our curriculum and maintain our fine buildings, our primary effort must be to employ and retain able and dedicated teachers.

THEREFORE, I feel it is essential to pass the 1.9 mill proposal if we are to keep salaries in our district competitive with those in other suburban areas. Birmingham's salary schedule does not compare favorably with those of some of our closest neighbors; namely, Royal Oak, Southfield, Oak Park, Hazel Park, Berkeley and Bloomfield Hills.

Over and above a salary raise, we must strive to offer financial incentives which will encourage

lates policy and the administrator is the professional person who implements the policy.

HOWEVER, there is always the vexing question as to where does policy leave off and implementation and operation begin?

Such a question can usually be solved if there is a mutual understanding between the school board and administration of what the community desires and expects of its school system.

In conclusion, I believe that the Board of Education is responsible to the citizens to offer the best education possible with the funds the community is able to provide.

There are offers in Classified for every purse, person and purpose.

1941 So. Telegraph Rd.  
Bloomfield Hills, Mich.  
FE 3-7977



**INTERIOR  
DESIGNS**

Special advisory service  
BRIDAL REGISTRY

A decorating workshop specializing in interior design and decoration for home or office — exciting new wallpaper designs and fabrics — crafts of all kinds — ceramics, textiles, sculpture, paintings, imports, furniture, lamps, flatware—all the decorative and useful accessories for living or giving.

But one Shirt from our LADY HATHAWAY COLLECTION of fine imported Cotton

WHITE 7.95  
MAIZE  
SKY  
SLIVER  
HAT 3.25  
SHOES 3.95



EXCLUSIVELY OURS

Look for This Trademark to be sure of the original.

All wool In Beautiful White and Pastel Shades.

In Small, Medium, and Large.

35.00



MADE AND KNITTED IN HONG KONG



SHORTS BY LOMBARDI in Tarpoon Cloth 7.95 8 thru 20 Copper Brass Green Peacock Blue Curry

Mail and Phone Orders Filled

"EVERYTHING WE SELL MUST TRAVEL WELL"

**KAY COOLEY**

Birmingham: 190 W. Maple

Detroit: Staller-Hilton Hotel

### FASCINATING FACTS ABOUT NATURAL GAS

#### How Times Have Changed!

The year is 1859—men are drilling for GAS. They are digging with hand shovels. A white oak with battering ram lays close by to battering down lengths of cast iron pipe. A six-horsepower, river-pipe, boat boiler powers the salt water bit that cuts through the earth—three feet a day—to the final and amazing depth of sixty-nine feet!

A hundred years later, hard teeth of a rotary drill rapidly grind through rock, clay and sand. A stream of water cools the bit through the hardest rocks. A large pipe, then a small pipe, is lowered. Powerful pumps, lets shoot perforations into the earth. From Nature's reservoir, "stored sunshine" is released—sometimes from a depth of five miles!



\*This "stored sunshine" is one of America's favorite fuels—seven out of ten homes built today use Natural GAS for heating. Call or write your Heating Equipment Dealer or Consumers Power Company for information about inexpensive, automatic Natural GAS heat.

GET THE FACTS - BETTER YET - GET GAS!

PG-7080-21