

## Vote

(Continued from Page 1-E)

efficiency and lasting benefit from each dollar spent in the physical development of the community, whether from public or private sources.

A planned suburban community is more than a modern fad. Growth in the area together with adequate schools and community services are dependent on factual studies and a pattern to guide development and protect existing property values.

BLOOMFIELD township's board of trustees and zoning board have taken all means possible under existing law to undertake studies of future growth. Now it is up to the voters to provide the adequate agency to carry out and guide the township growth.

## Southfield Schools To Pay Special Assessment Share

SOUTHFIELD Board of education members passed a resolution Monday agreeing to pay the school district's share of special assessments for paving, water and sanitary sewers as a matter of good business and ethics. Included in the action was the decision to examine and decide each individual case on its own merits.

The board is not required by law to pay all or any part of its share of special assessments. Because of citizen cooperation where special assessments have been involved, the group desired to go on record to show its willingness to assume its portion of such bills.

Future study will be made to

investigate establishment and sources of a fund to cover such bills.

THE TREASURER's report for July 1, 1959 to June 30, 1960, showed an operating deficit of \$5,397.96. Earlier budget estimates set the deficit at \$48,556.

Reduction of the deficit is due, in part to a 14 mill boost in millage by the Oakland county tax allocation board. The increase is based on increased state equalized valuation in the Southfield district.

A LOAN OF \$250,000 against state aid was approved by the state department of public instruction; bids are due Aug. 8. The board voted at its July 11 meeting to authorize loans up to \$501,000 against state aid.

A sum of \$926,449 net state aid is due for the period July 1 of this year to June 30, 1961. The borrowed funds will be used for operating expenses.

## 14 Mile Road Improvement Plan to Start

BLOOMFIELD TOWNSHIP — The second of three major improvement projects in Bloomfield township starts this week on 14 Mile road between Telegraph and Franklin roads.

Engineering is already under way on Wattle road from Adams to Charing Cross. Work has not yet begun on the third road, Quar-

ter from Wing Lake to Franklin. Cost of the 14 Mile improvement is estimated at \$55,608. It is being met, under the matching funds act, on the basis of 50 per cent from Oakland county road commission, 25 per cent from Bloomfield township and 25 per cent from Franklin village.

Engineering plans for these three major crossroads in Bloomfield township call for development of a solid road base this year and paving of the roads in 1961.

Selection was made by a committee headed by Fred Chapman, a member of the township zoning board. Other members were township trustee Gordon Getzinger and Police Chief Norman Desha.

Prescription for profit: A want ad by phone or mail.

MICHAEL FITZGERALD

## Mike Fitzgerald Chosen Honorman Of Navy Recruits

SAN DIEGO, Calif. — Chosen honorman of his Navy recruit company recently, the Naval training center, San Diego, Calif., was Michael J. Fitzgerald, seaman apprentice, USN, son of Mrs. and Mrs. James A. Fitzgerald of 18255 Birwood, Beverly Hills.

BEFORE ENTERING the service in April, 1960, he attended Mumford high school, and was employed by the Beverly Hills department of public safety.

## Roeper Day Camp Youngsters Claim Their Stray Speck

BLOOMFIELD TOWNSHIP — Bloomfield Open Hunt found itself in possession of an extra horse last week. The horse was brought to the stables when found wandering in the area. After a search for the owner began, investigators contacted the Roeper summer day camp on Woodward, north of Long Lake road. The search ended.

Apparently, Speck, that's his name, jumped the fence of his corral on the weekend in an attempt to find some of his human friends. The horse is only one animal in a well populated zoo actively maintained at the day camp. The animals are cared for by the children.

LAST WEEK, special care and attention was given to a rabbit who was the proud mother of three babies. Each day the children get to the "zoo" to see the progress of the young rabbits. Earlier this year, a goat was born and each day the children would take turns feeding it.

Other animals in the camp's menagerie include pigs and ducks. But the likely favorite is Speck. Each morning he can be found on the main playfield, under a shady old tree, waiting to give his friends a ride.

THE "ZOO-KEEPER", Terry Littman, an Oak Park high school student, supervises the rides and takes care of animals in the camp. Understandably, Terry never has any trouble finding helpers.

## Offer Settlement, Court Postpones Boat Zoning Rift

WEST BLOOMFIELD — The case of Arthur Twork vs. West Bloomfield township was postponed to Aug. 5 by Oakland county circuit court Judge William Bier when the case came up for hearing last Thursday.

The postponement was made to give Twork time to consider a settlement offer made by township attorney Floyd Blakeslee and residents of Interlaken subdivision, who had intervened in the case on behalf of the township.

Twork is seeking to have his lakefront property on Pine Lake zoned commercial in order to enlarge boat livery and cabin rental facilities. At present it is zoned residential, with non-conforming commercial use.

AN OFFICER in Interlaken association stated that Twork was offered the privilege of erecting an eight-unit motel with one boat rental for each unit, if he would agree to give up his public boat livery.

Township attorney Floyd Blakeslee stated Monday that Twork's lawyer had indicated he would not accept the settlement.

## Republican Women Elect New Officers

SOUTHFIELD — The Republican women of Southfield met July 21 at the Lathrup city offices for their election meeting. Officers of the new organization are

President, Mrs. Loren C. Spademan, Jr., Pleasant Trail, Southfield; First Vice President, Mrs. David O. Chance, Beech court, Southfield; Second Vice President and Delegate to Oakland county council of Republican women's club, Mrs. E. C. Lewis, Crestwood, Franklin.

RECORDING SECRETARY, Miss Shirley Thorpe, Melrose, Southfield; corresponding secretary, Mrs. Henry W. Hastings, Spring River drive, Southfield; treasurer, Mrs. John Semivan, Bainbridge drive, Southfield.

The purpose of the organization is two-fold: for the continuing political education of its affiliates and to get out the vote.

## EXCLUSIVE BLOOMFIELD VILLAGE SHOWPLACE



The Monterey type four bedroom home is situated on two large permanently landscaped lots, with lavish plantings of prize-winning roses and exquisite gardens. Spacious living room is 28 x 18 feet with separate dining room 15 x 16 feet, paneled library, 28 foot screened porch. Master bedroom is 30 x 24 feet with separate dressing room. Refrigerator and bar in basement recreation room. 2 baths, 2 lavs, carpeted throughout, economical gas heat. Owner has moved making immediate possession available. Terms arranged to suit you. Price drastically under duplication for quick sale.

CHARLES J.

**VAN HORN**

MI 6-2400

## Looking For Value?



THIS AUTHENTIC AMERICAN COLONIAL TRI-LEVEL IS BIRMINGHAM - BLOOMFIELD'S BEST BUY IN QUALITY HOUSING. CHECK THESE FEATURES:

- 2440 livable square feet
- All wet plaster
- 2 fireplaces
- Aluminum siding
- Built in Frigidaire dishwasher, double oven, large range
- 23 x 13.4 Family room, with brick fireplace wall, and raised hearth . . . paneled
- 4 large bedrooms, all with walk in closets
- 21.6 x 13 living room plus bay
- 12 x 11 dining room with double French doors
- 15 x 11.6 kitchen with solid maple pre finished cabinets
- Two and one half baths
- Hot water baseboard heat
- 23 x 11 utility room
- 23 x 23 garage, plastered

CUSTOM QUALITY BUILT BY WILLIAM S. LORIMER. Completely color designed by STEWART PELTON.

DUPLICATION PRICE FOR HOUSE ALONE, ON YOUR LOT. \$28,500.

Model open daily from 1 P. M. to 6 P. M. in beautiful Bloomfield Glens Estates, on Halla Lane, one half mile north of Maple, just east of Lahser. You should see this magnificent value!

Howard T.



Developments

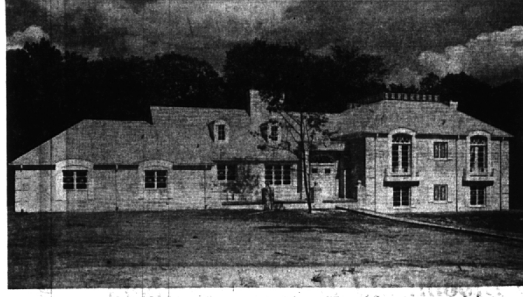
MI 6-1234

IO 6-3121

Lahser Road and 13 Mile Road, Birmingham



The French Provincial motif of this Bloomfield Village home is carried throughout the house and it's delightful. There are 6 Bedrooms, a huge Family Room with built in Bar, Basement Rec. Rm. for the fun loving family and many exquisitely detailed features that make for luxury living. There are delightful shade trees, carpeting, draperies included at \$53,000.

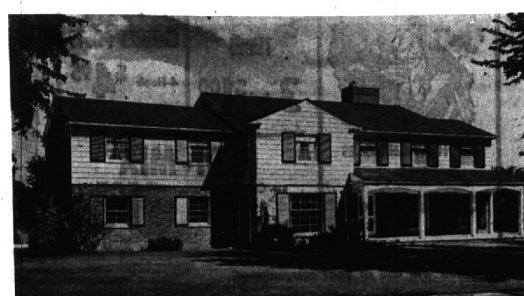


This French Country house is located in Bloomfield Hills' finest Subdivision—Rudgate. There are 3 Bedroom Suites on the upper level, 2 large Bedrooms on the lower level. The exterior limestone and wrought iron grills have been especially designed as is the Travertine marble foyer. Built on 4 levels, the home has large Paneled Family Rm. with Bar, separate paneled Games Room all with exquisite decor. This home will be a Bloomfield Hills showplace — we'd suggest you make an early appointment to view it.

# BROOCK

MI 4-6700

300 S. WOODWARD



This fine home was designed by architect Chowalter and built by Hubbard & Hubbard. It has a plethora of custom features and is of superior construction. There are 6 fine Bedrooms, a paneled Family Room and a rip roaring Rec. Rm. with Bar. The Living and Dining Rooms are of excellent dimensions and most attractive. Quanton Elementary School is just a short walk as are shops and transportation. If you are seeking an exceptional family home, don't fail to see this one.



Here's a most attractive home with fine accommodations. The 4 Bedrooms are ample in size. The Living and Dining Rooms are most inviting and there's a paneled Library, also a full Bath on the first floor. Walking distance to Quanton school, shops and transportation. On an expertly landscaped 120 ft. site, this home represents exceptional value at \$52,500.