

DOOR CLOSERS

\$2.25
STORM KING
 Airdraulic Newell 006D
\$3.00 Newell 007D
\$3.75 Newell 009D
 We Repair Storm and screen inserts, aluminum or wood. (Just bring them in.)



KAYE SASH & SCREEN
 1523 N. MAIN, ROYAL OAK (South of 12-Mile)
 EST. 1946 • FREE ESTIMATES • Financing Arranged • 11 a.m. to 6:00 p.m. MON., THURS., 9 a.m. FRI., SAT., 8-12 NOON

You will find many bargains in The Eccentric Classified Columns.

JOIE DE VIVRE!!

A great month—July! Full of bugs eating the fruit, fungi destroying the lawns, mosquitoes biting people, grills burning steaks, rabbits eating petunias, dogs crabbing at crabgrass and so on and so on. Just a GREAT month with everything and everybody on the move!

To give a little useful direction to this tremendous movement of things and bodies the following comments are written:—

- FRUIT TREES:** Keep up the spraying every week with Mc-B's FRUIT TREE SPRAY (Michigan formula). Stop spraying apple, cherry and pear 7 days before harvest; strawberries 14 days; peaches 21 days. Observe the rules for washing and cleaning fruits and berries.
- BROWN PATCH in lawns:** Active in hot, wet weather on bluegrass and bent. When active, a dark blue or black ring can be seen at the edge of the brown patch. Spray weekly with ACTI-DIONE R.Z. Do not water in the evening. Avoid saturating the soil so that excessive moist areas occur. (This is not at all like athlete's foot.)
- The weeded garden can be kept that way all summer if you cover it 1 inch deep with PEAT MOSS or 2 inches deep with BUCKWHEAT HULLS (MULCH).**
- WEDNESDAYS:** Don't bother to come in or call us as we are "making like doctors." We are CLOSED on this day through July and August.
- FOUNTAINS & BIRD BATHS:** A new supply should be here now or in a few days. Sorry we ran low (or are we?)
- If you have one of our SPREADERS that we loaned to you return it now or we will PUT IT ON YOUR BILL!**
- APPLE FUNGICIDE: CAPTAN** is the most widely recommended material. It is given preference over all other fungicides on the most "better finish" programs.
- CAPTAN** controls apple scab, frogeye, leaf spot, sooty blotch, fly speck, etc. It is a part of the Michigan formula mixture under the name of Mc-B FRUIT TREE SPRAY.
- DET. FREE PRESS:** Quote—"Moss in your lawn is a sign of low fertility." Not entirely true, although a real cause of moss.
- Acidity** is another condition moss enjoys and, as we have discovered, dampness, shade and poor air circulation will promote its growth.
- CRABGRASS:**—In your selection of material to kill the plants now in evidence don't buy just any old can of market crabgrass killer. Among the very best are ARTOX CRABGRASS KILLER and ORTHO CRABGRASS KILLER—both liquids.
- MOSQUITOS:** These pesky pests can ruin a siesta, a seance, a social setup, or simply you. Spray as large an area of your own yard as you can and get your neighbors to do the same. Spray the lawn, the garden, the borders and the lower branches of trees. Get the stuff into the damp, dark, cool areas. With what? DDT-IDE (20% DDT emulsion). Do it 2 or 3 times during the summer.
- BURNING STEAKS:** Ugh! Stupid! Use a BIG BOY GRILL and do your chicken, ribs and roasts on an electric spit. GOSH! Imagine BURNING A N.Y. STRIP! UGH!
- RABBITS:**—Can be discouraged with NO-NIBL or BLOOD MEAL. (Discouraged from eating, that is.)
- Soak your roses once a week.
 - Keep the rose beds cool and moist with a covering of BUCKWHEAT HULLS.
 - Water the roses with a CANVAS SOAKER as so not to wet the foliage.
 - Use FLANT PROPS or ADJUSTO STAKES for supporting tall stems and bushy plants.
 - Cut back severely the violas and pansies—fertilize and water and a splendid new crop will come.
 - Side dress vegetables with GARD-N-GRO or AGRICO for GARDENS. (4-12-4 or 5-10-5.)
 - Use ROTENONE on beans.
 - DO NOT use DDT on melons, squash or cucumbers.
 - GIVE US BACK the spreaders we loaned you.
 - CORN EAR WORM is controlled by cutting off the silk as soon as it turns brown or dusting the silk with DDT.
 - If pheasants are around keep pans of water at each end of your tomato patch—if you want the tomatoes.
- Spray delphiniums and other flowers regularly with ISOTOX or Mc-B GARDEN SPRAY.
 - MILDEW on most flowers can be controlled with a change in the weather or by spraying with SULPHUR or CAPTAN or PHALTAN.
 - RED SPIDER: For heaven's sake wash down the pines and spruce, etc., with a full hose stream and after they dry spray with Mc-B INSECT SPRAY or ISOTOX or MALATHION.

"Francois"

McCLELLAN-BALL CO.
 YARD GARDEN SUPPLIES KENNEL FARM
 BIRMINGHAM, MICHIGAN
 Phone MI 4-1133 850 S. Woodward

One-Teacher Schools Stopping Bad Drivers Pays
 Count 23% of Total

Birmingham citizens justifiably proud of their modern public school system may think that the "little red schoolhouse" is entirely a thing of the past.
 "Not so," says the Michigan Education Assn. which points out that a 1958-59 nationwide survey revealed that 23 percent of all Michigan public schools are one-teacher schools. The number has decreased, however, from 2,206 one-teacher schools in 1918 to 1,291. During the same period, the study revealed, the number of one-teacher schools in the United States decreased 88 per cent.—from 196,047 in 1918 to 23,965 in 1958-59. The latter figure represents 19.5 per cent of all public schools and 25.0 per cent of all public elementary schools in the country.

A ONE-TEACHER school is a public elementary school with only one teacher, located in a rural or urban area, including one or more rooms and comprising one or more grades.

In 1958-59, one-teacher schools in Michigan were staffed by 2.2 per cent of all Michigan public school teachers, as against the national figure of 1.8 per cent. Nearly 400,000 children, 1.1 per cent of all children enrolled in public schools and 1.6 per cent of all public school children in grades 1 through 8, attended one-teacher schools.

THE AVERAGE salary for a Michigan teacher in a one-teacher school was \$3,649.79 in 1958-59 as compared with \$5,504, the average salary of a Michigan public school teacher in the same period, according to the research division of the Michigan Education Association. The NEA survey revealed that the national average salary for a teacher in a one-teacher school during the same period was \$2,921, or 60.9 per cent of \$4,847—the U. S. average for all classroom teachers.

Although men teachers had fewer years of teaching experience and fewer of them held full certification, their average national salary of \$2,921 was slightly higher than the average salary for women—\$2,917.

A typical teacher in a one-teacher school in 1914-15 was an unmarried woman of 21 who had four years of high school. In contrast, the typical rural teacher of today is a married woman of 45 with an average of two years' college education and 14 years' experience. Only 8.3 per cent of one-teacher teachers are men, while 13.1 per cent of the total elementary school teaching staff are men, the study showed.

ABOUT 83 PER CENT of the teachers have had less than four years of college and 3.2 per cent had five or more years of college preparation. Less than one-fifth held academic degrees: 83 per cent held no degree, 2.0 per cent held a two-year degree or certificate and an average of 11 years' teaching experience, but only three of those years were spent in their present school.

More than 84 per cent of the teachers reported they would choose teaching in a one-teacher school if they could start over again, 11 per cent were uncertain and three per cent said no.

On the whole, teachers thought the school program was good—equal to that of many larger schools.

'HDA' Means Safe to Stay

While vacationing in Michigan's water world, stop at the sign of the HDA. This is the advice of your state health department which reminds you that HDA means "Health Department Approved" and assures the vacationer that the resort, motel or other vacationing stop is safe.

Where the green and orange HDA sign is displayed, it means the tourist or vacationer can count on:

- 1) A safe water supply.
- 2) Adequate disposal of sewage, garbage, and refuse.
- 3) Protection from common hazards.
- 4) Clean, ventilated, screened buildings.
- 5) Good food handling, if food is served.

MORE AND MORE Michigan resorts each year are displaying the coveted sign which vacationers have come to rely on for protection against having a vacation spoiled by food borne, water borne, fish spawned disease.

This summer, about 2,000 of Michigan's elite resorts will display the HDA sign. It is anticipated that local health department inspectors this year will find an increase in the number of places displaying the sign a year ago.

If there are swimming facilities, they also are inspected and approved. HDA approved places also assure control of insects and such nuisances as poison ivy.

Do you have any unwanted articles of furniture? Turn them into cash with a "quick result" Eccentric classified ad.

"We Serve the Suburbs"

see the new... fine furnace oils
 see the new "Custom Mark III" oil furnace
 that's revolutionized oil heating

TORRENCE OIL Company

For Service Call:
 MI 4-9000

Evidence compiled by the Michigan department of state tends to prove that traffic accidents and fatalities decrease in a direct ratio to the number of violation-prone drivers whose licenses are revoked or suspended.

James M. Hare, secretary of state, today released figures to show that 12,694 errand drivers had lost their licenses during the first half of 1960, a sharp 60 per cent increase over the 7,774 suspended or revoked in the first six months of 1959.

State police records show that 46 fewer people were killed on Michigan highways in April, May, and June of this year compared to the same months in 1959.

"WE HAVE known since 1955," Hare said, "that as more habitually negligent drivers are re-examined or suspended, the number of deaths and crippling accidents decreased in Michigan."

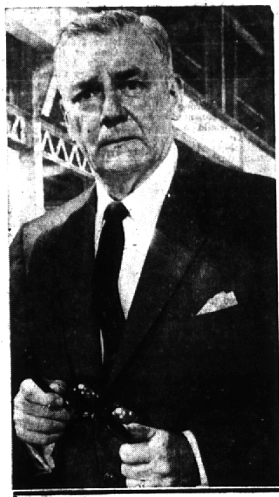
Based on National Safety Council estimates the drop in fatalities during the second quarter from 376 deaths in 1959 to 320 in 1960 has resulted in a saving of more than \$7,000,000 in accident costs.

Hare, who is also chairman of the Michigan State Safety Commission, said, "Although many factors and numerous agencies share the credit for Michigan's outstanding highway safety record, it is clear that the firm but fair policy of taking violation-prone drivers off of Michigan roads contributes much to making highways safer for everybody."

"Through improved education, engineering, and enforcement programs all agencies concerned with traffic safety are working this year to make Michigan a safer state in which to drive and live."

No Extra Charge for Classified Orders Placed by Telephone

You have 'til Sat. Noon after your classified ad appears before the charge rate takes effect!



The Case of THE HEAVILY TAXED MAN

More spendable income was the problem for this heavily taxed man in the high-income brackets. He achieves it—free of taxes—with investments in selected municipal bonds. Moreover, his investments in these securities help provide better roads, more schools, more jobs.

Whether your interest lies in tax-free securities, mutual funds, or a low-cost plan of systematic investing... you can attain your objectives through a planned investment program under the guidance of experienced Watling, Lerchen & Co. representatives—an investment program that's tailored to fit your needs... your goals... your purse or paycheck. Phone or mail coupon for more information.

Members New York Stock Exchange and Other Leading Exchanges

Watling, Lerchen & Co.
 2100 BLDG. WEST MAPLE & CRANBROOK RDS.
 CRÉSON BLDG., WEST MAPLE & CRANBROOK RDS.

NAME _____
 ADDRESS _____
 CITY _____ ZONE _____ STATE _____

Information Please! Please send booklets checked below.

Michigan's Tax Exempt and Guaranteed School Bonds
 Current Offerings of Tax Exempt Municipal Bonds
 Tax Free Versus Taxable Income Chart

Over 48,000 Savers Receive More Than \$1,428,630 in Earnings for First Half of '60

AMERICAN SAVINGS AND LOAN ASSOCIATION

FINANCIAL STATEMENT as of June 30, 1960

Assets	
Cash on Hand and in Banks	\$ 3,261,080.35
United States Government Bonds	7,214,665.43
Other Investment Securities	99,186.77
Stocks in Federal Home Loan Bank	2,000,000.00
First Mortgage Loans (F. H. A. and U. S. Government Insured Mortgages Included)	86,464,507.79
Loans on Savings Accounts	183,161.73
Land Contracts	1,520,800.00
Real Estate Held for Redemption	65,586.63
Real Estate Owned	169,727.81
Furniture, Fixtures and Equipment, less Depreciation	387,148.90
Accounts Receivable	175,800.00
Deferred Charges and other Assets	473,281.28
TOTAL	\$103,338,066.92

Liabilities	
Savings Accounts	\$ 89,379,315.50
(All accounts insured up to \$10,000.00)	
Advances from Federal Home Loan Bank	5,472,500.00
Loans in Process	14,440.85
Accounts Payable	40,773.04
Advance payments by borrowers for insurance and taxes	2,346,339.96
Unearned Profit on Land Contracts Purchased	80,252.61
Unearned Discount on Loans Purchased	37,979.26
Uncollected Interest on Loans and Contracts	105,025.98
Other Liabilities	473.41
Reserves	5,499,086.11
TOTAL	\$103,338,066.92

CURRENT RATE 3 1/2% ON ALL SAVINGS

Insured to \$10,000 By an Agency of the United States Gov't.

AMERICAN SAVINGS
 Michigan's Largest State-Chartered Savings Association

TELEGRAPH ROAD AT MAPLE IN BLOOMFIELD SHOPPING PLAZA
 Open 9:30 to 4:30 • Fridays to 8:30 p.m.
 Convenient Free Parking

OFFICERS
 ADOLPH DEUTSCH, President
 SAMUEL HECHTMAN, Senior Vice-President
 ALFRED L. DEUTSCH, Secretary-Treasurer
 ALFRED L. DEUTSCH, Secretary-Treasurer
 ALFRED L. DEUTSCH, Secretary-Treasurer
 ALFRED L. DEUTSCH, Secretary-Treasurer

DIRECTORS
 CHARLES CANYASSER, Chairman of the Board
 NATHAN L. GOLDIN, Secretary-Treasurer
 SAMUEL S. GREENBERG, Secretary-Treasurer
 ALFRED L. DEUTSCH, Secretary-Treasurer
 MAXWELL JOSSEY, Secretary-Treasurer
 GRAHAM A. ORLEY, Secretary-Treasurer
 JACK S. ROSS, Secretary-Treasurer
 JACK SYLVAN, Secretary-Treasurer
 JOSEPH WARREN, Secretary-Treasurer