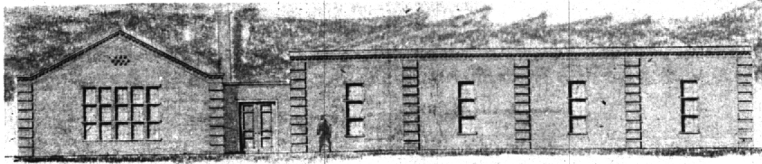


Youths At Music Camp

Two Birmingham students have earned first rate distinctions at the Michigan State University Band and Orchestra Clinic and the National Music Camp at Interlochen, Michigan. Charles Fierz, son of Mr. and Mrs. Daniel Fierz, 987 Madison, Birmingham, is playing first chair clarinet in both the clinic band and orchestra. A first chair musician is one at the head of his particular instrument section. Also, Marge Stetthacker, daughter of Mr. and Mrs. Wayne Stetthacker, 19045 Hillcrest, Birmingham, is the first chair clarinetist in the National Music Camp Band at Interlochen.



New Michigan Bell Office for West Bloomfield

WEST BLOOMFIELD—This artist's sketch shows Michigan Bell Telephone company's new West Bloomfield township office now under construction on Middlebelt road, between 14 and 15 Mile roads. Cost of the \$1,386,000 project includes building, central office equipment and outside plant equipment. Completion of the 82x90-foot brick building is scheduled for February, 1961. Albert H. Warner, manager for Michigan Bell, said the project is being undertaken to

keep pace with the expansion of the community, to provide for future telephone growth in the area, and to enable Mayfair customers to dial long distance calls direct coast-to-coast and to many points in Canada. He said that when direct distance dialing goes nationwide it will enable the 4,800 customers in the exchange to dial their own station-to-station calls direct to 45,000,000 phones in the United States and Canada.

KEEP COOL ALL DAY with SHADESCREEN
by KAISER ALUMINUM

It comes in 2" breaks, 24" to 48" widths... cut to your exact needs from 50' rolls.

Exclusive Shade Screen Louver Design Lets Cool Air In... Keeps Glare, Heat and Insects Out.

AVAILABLE IN:

- Porch Enclosures
- Picture Window Screens
- Kaufmann Combination Window and Doors
- Screens for Sliding doors
- Commercial Screens
- Institutional Screens

See Shade Screen In Suburbia, Page 6

C. WEEDON HOME EQUIPMENT CO.
1661 S. Telegraph Rd. Pontiac, Michigan FE 4-2597

Bond Issue

(Continued from Page 1-E)

for the alleviation of the pollution problem. "Unless the city builds certain storm sewers, their overall proposed plan for ending pollution would be neither feasible nor effective," he declared. The court ruling clinches nearly four years of complicated court procedure.

THE COURT cannot now envision circumstances which might warrant the court permitting further delay. Holland said, adding, "The time has come when the city must become reconciled to the fact that there must be abatement." The court's decree does not commit the city to either a combined or separated system of storm and sanitary sewers. It allows the council to issue and sell bonds to pay for the storm water system but does not preclude taking a bonding proposal to the voters.

The resolution authorizes the council to hire ALN&M to make an engineering study and report, an economic analysis, and recommendation for the most feasible solution to the storm water problem. The engineers will re-study plans and bring them up-to-date and then make a recommendation. Following completion of preliminary plans and cost estimates, the firm will be authorized to prepare final plans and specifications. Each step will be referred to the council for approval. City attorney Hayes will prepare a suggested contract between the city and ALN&M.

THE ENGINEERS will be urged to work with all possible speed in order to comply with court-ordered dates. The possibility of turning the engineering over to the county drain commissioner's office was opposed by Mayor Cogger. He said such a step would probably make it difficult to sell bonds to finance the storm sewer system and he questioned whether bonding attorney Claude Stevens would approve

Says 'Torpedoing' Caused Cranbrook Village Flooding

SOUTHFIELD—A Lathrup city official today said that Cranbrook Village residents in Southfield caused their own storm water problems when they "torpedoed" a Lathrup-requested plan to widen the Evans ditch. Cranbrook Village residents recently appeared before a Southfield city council meeting to complain about the backing up of storm water into their basements through sanitary sewers. They demanded that Southfield "unhook the plug" in the Evans storm drainage ditch by widening the culvert under 12 Mile road.

The Lathrup official, who declined use of his name, said that Village residents blocked a county-drawn plan for widening the ditch because they wanted to maintain the "picturesque ponds" along the stream course. Southfield, however, will hold a public hearing July 11 on the assessment district to be set up for widening the Evans ditch in that community. This will put Lathrup in the path of an increased flow of storm water that could cause flooding there unless the ditch widening is extended through Lathrup. (The original Evans ditch proposal called for widening from Acacia to Eight Mile.)

Piano Tuning, Tree Service, Car for sale, articles for sale. Whatever the classification, Eccentric classified ads will meet your every need. The issuance of bonds under such a set-up. Council members' comments indicated they favor an election to approve bonds. An invitation meeting with Oakland county Drain Commissioner Daniel J. Barry, city officials and representatives of interested groups is set for next Tuesday at the drain commissioner's office in Pontiac.

Wood Creek Names Four New Planners

WOOD CREEK FARMS — Four new members of the planning commission were appointed by the council Tuesday night, also, the long delayed acceptance of the resignation of road administrator Richard Norwalk became effective. Dr. Conrad Lam, Fred Missel and Thomas Jennings were named to serve for the next three years on the planning group. Charles Brown was named to serve one year as a replacement; for the unexpired term left by Prescott Schlotterbeck recently moved from Wood Creek.

Supervisor's Son Doing Research In South America

BLOOMFIELD TOWNSHIP — Dr. Claude L. Hulet and family of Reseda, Calif., visited his parents, Mr. and Mrs. Arno L. Hulet, 2355 Franklin road, last week before he departed for Rio de Janeiro for three months study in Brazil. Professor Hulet, whose father is supervisor of Bloomfield township, is the recipient of a travel and research grant from The Organization of American States. In Brazil he will search out and study documents pertaining to the mutual influence of Brazilian and Argentine Romantic writers during the 1840's. The research will be done in the national library in Rio de Janeiro, as well as in libraries in Sao Paulo and Porto Alegre in the south and Recife and Belem in the north.

LATER THIS MONTH, the professor's wife, Norma, will join her husband in Rio de Janeiro, where she will assist him in his research. She and their three sons, Claude B., Richard and Roger, are presently staying with the Hulets. The boys will spend the summer with their grandparents.

Crash Kills Beverly Hills Father of 3

BEVERLY HILLS — A 4th of July weekend crash claimed the life of a 35-year-old Beverly Hills father of three and seriously injured a companion. Erwin J. Smith, 21885 W. Thirteenth Mile, was dead on arrival at St. Joseph Mercy hospital, Pontiac, shortly after the 9:30 a.m. accident on Friday on Franklin road just north of Long Lake road, Bloomfield township. Smith, who was driving south, apparently lost control of his car and hit a board fence before crashing into a tree.

A COMPANION, Clyde G. Leet, 57, of Farmington, suffered severe facial cuts. His condition was described as "poor" following surgery. A sales representative for several area firms, Smith was driving to a nearby bank before returning home, his wife, Joyce, said. Married for 13 years, the Smiths have lived in Beverly Hills for the past seven.

THEIR three children are Paul Terry, Erwin III, 5, and Wilson Scott, age one. A former paratrooper, Smith served with the Army in Europe during World War II. He went to business school while in the Army and attended college in New York state. Services were Tuesday from the Fred Wood funeral home, 8460 Franklin road, Detroit. Besides his wife and three sons, he is survived by his mother, Mrs. Alice Smith and a sister, Mrs. Fred Griffin.

Elect Optometrist Lions President

A Birmingham optometrist, Dr. George Kewell, has been elected president of the North End Lions club of Detroit. A former resident of Birmingham, Dr. Kewell has lived in Bloomfield Hills the past five years and has an office on Hunter boulevard in Birmingham.

Repair Post Office

John Wm. Chapman, Jr., regional commissioner of the General Services Administration, announced recently that the Birmingham Post Office will get a face lifting. A contract for \$5,895 worth of repairs and painting to the building has been awarded to L. E. Malan Painting and Decorating, a Milwaukee, Wis. firm.

ALUMINUM QUALITY PRODUCTS
PRE-FABRICATED METAL WOOD-BURNING FIREPLACES

8 9 P.M. FRI. TO 6 P.M. MON. - THURS 12 NOON SAT.

REPAIRS
KAYE SASH & SCREEN
1523 N. MAIN, ROYAL OAK (South of 12-Mile)
EST. 1948 • FREE ESTIMATES • Financing Arranged • LI 5-0600
Expert Workmanship • Prompt Service • Courteous Personnel

20% or MORE OFF ON ALL LAMPS AND ACCESSORIES
Through July 15
air conditioned

LAMP CORNER
Open daily 9:30 - 5:30; Fridays till 8:30
First Light S. of Howard Johnson's
2610 N. Woodward LI 9-0242

Ted's is family fun

WOODWARD AVENUE AT SQUARE LAKE RD.

FACTORY BONUS SALE
Drive a 1960 PONTIAC FOR ONLY \$2444⁰⁰
Equipment with: Hydraulic, oil filter, heater and defroster, 800 x 11 tubeless tires, choice of V-8 engine, all taxes.

ACE WILSON'S
ROYAL PONTIAC
Royal Oak

Oakland County's Valume Pontiac Dealer

fool-proof ELECTROCUTOR
Attracts insects from large area and kills 'em all

- Eliminates Spraying
- Economical
- Portable
- Easily Installed

\$149⁵⁰

Dotco, Inc.
Swimming Pool Service
3961 Auburn Road
UL 2-4640

Don't Miss Jularid's SEMI-ANNUAL SALE
Dress and Casual Footwear

Deliso Debs
Erica and Amalfi's
Sandler's
Foot-Flairs

Whites, Beige, Reds, Greens
Patent Leather, Blues, Bones
Blacks & Browns. Straws.

Reg. \$10.95 to \$27.95
NOW SHARPLY REDUCED
\$5⁹⁰ to \$18⁹⁰

Save Now on your Summer Footwear

Jularid's
Open Evenings Friday
154 West Maple Birmingham

Sherwood Studios Comes to Birmingham

The wonderful clientele we have earned in and around Birmingham will now be able to get the same complete decorating services that we have furnished in our Detroit Studios for 34 years.

As always we will specialize in the finest custom furniture, draperies, upholstery, refinishing and interior design. (All work is done in our own shops)

One of the most extensive lines of drapery and upholstery materials in the country will make your shopping a delightful adventure.

Interesting accessories, occasional pieces and objets d'art, always on display. Stop by and browse.

We hope you'll like us!

Come in, or phone for appointment with one of our interior decorators.

Sherwood Studios
160 S. Woodward - Birmingham
Midwest 7-1230

Saloon Type Doors

These old time doors are ideal for that doorway that does not lend itself to a regular door.

They can be furnished plain or in a stylized treatment.

Movable Louvers are also available.

McCLELLAND & SON
4076 W. Maple, Birmingham (nr. Telegraph)
Mon. thru Fri. 8 till 5 — Sat. 8 till noon
MI 4-3003