

From the day when your child is given into the hands of your public school teacher he (or she) is being subjected to the training by a stranger. To be sure, your school board is presumed to require teachers of certain standards, so you assume your child will get proper "training". But do you seek to become your child's teacher's friend... to create a friendly relationship with your child's home and his teacher?

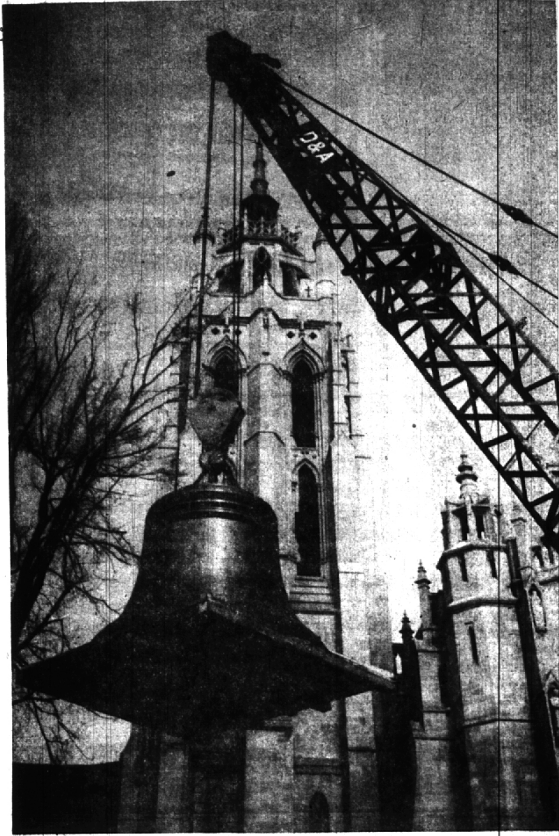
The Birmingham Eccentric

BIRMINGHAM, MICHIGAN

Thursday, January 28, 1960

SECTION
B

New Voice in the Hills

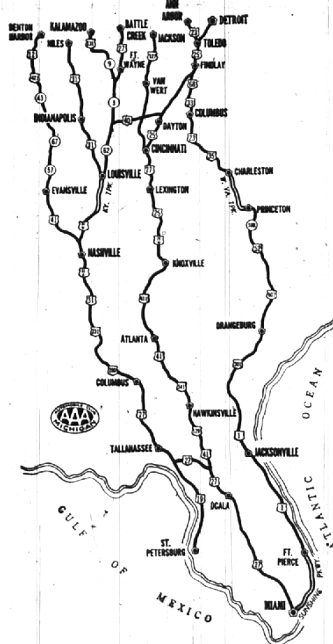


One of 77 bells, cast for the world's largest carillon, was hoisted from its crate last week at Kirk in the Hills. The 60-ton shipment arrived last Thursday from New York. The bells were cast in the Netherlands and took 11 months to make. The carillon will be installed in the 187-foot church tower. It is the gift of an anonymous patron of the parish. A ceremony to dedicate the new carillon is scheduled during April.



Winter Wonderman!

Eight-year-old Craig Colburn had to grow a little to put a chapeau on "Herman," his snowman. The youngster glows with pride after securing the final touch to his sculpture. Craig, a Baldwin school student, and his sister, Linda, 14, made the snowman in approximately four hours. They are the children of Mr. and Mrs. Albert R. Colburn, 791 Purdy, Birmingham.



Downhill All the Way

Most of the Michiganians who drive to Florida during 1960 will use one of the three major routes outlined here, says Automobile Club of Michigan. The most popular winter route is through Louisville and Nashville, according to Auto Club. The fastest route, except in winter, is via Charleston and the West Virginia turnpike.



JOHN W. PAIGE, C.L.U.
GENERAL AGENT
Indianapolis Life Insurance Company
Estate Planning
Personal and Business Life Insurance
Major Medical, Sickness & Accident Protection
Pensions, Profit Sharing, Employee Benefit Plans
Suite B8, Stevens Building
1025 E. Maple Ave., Birmingham
Phone: MI 6-9788

"Over 30 Years Experience Available to You"



'Going Up Anymore Today?'

Clouds were just beginning to close in at Berz airport in Troy. So J. Reed Alexander (left), 5411 Long Lake, Bloomfield township, and Milton Berz, Jr., 15837 Birwood, Beverly Hills, decided to do some safe, on-the-ground talking in the port's office—"ready-room". Berz is manager of the Berz

flying service. And for those who don't or can't or won't fly, there's always driving, which isn't too seriously affected by clouds. Many of these will be driving to Florida this winter. It's easy (see map, right) because it's...

CONSUMERS POWER CO.
A sound Michigan utility stock. Has paid dividends for 47 years.
Send for free report.

4.6%
APPROX
CURRENT
YIELD

Andrew C. Reid & Company
Member—Detroit Stock Exchange
Fiduciary—Birmingham Exchange
415 FORD BLDG., DETROIT 26

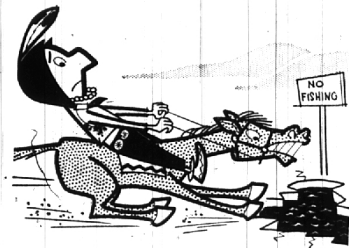
SEE THE NEW 1960
AUDIOPHILE SERIES OF
COMPONENT MUSIC
ENSEMBLES BY
STROMBERG-CARLSON
There is Nothing Finer
Birmingham Electronics
141 E. Maple MI 6-8440
Across from Cunninghams

give your furniture a new lease on life!

ELLIOTT'S Custom Upholstering of Waterford —since 1924

5400 Dixie Highway

OR 3-1225



STOP

AND DRIVE
THE WIDE TRACK
1960 PONTIAC



ACE WILSON'S
ROYAL PONTIAC
Royal Oak

OAKLAND COUNTY'S VOLUME PONTIAC DEALER

Every THUR. FRI. SAT. — A Weekly Special

Kresge's BIG BUY
the family's choice

Save 32% Reg. \$1.59
Women's Sheen Capri
SLACKS

This Sale Only
\$1.27
Pair



RED
BLUE
BLACK

Styling Makes The Big Difference!

Cotton-rib sheen Capri slacks tailored to give you the slim, trim look you treasure! Wear 'em Western style—with distinctive frontier pockets; go Dutch—with new buttoned flap pockets; or choose the man-tailored-type with tunnel belt loops, zipper front, side pockets. Self belts, washable colors. Save on several pairs at this special price! Sizes 10-18.

WEST MAPLE AT HENRIETTA — BIRMINGHAM

Exquisite Custom PICTURE FRAMING at Kresge's in Birmingham and Northland Center, all work guaranteed.

At Kresge's — "This Week's Big Buy is Your Best Buy"