

In 'Twelfth Night Gala'

Three participants in the pageant at Cranbrook's annual Twelfth Night Gala were (from left) Mrs. A. Leslie Schaefer, who portrayed Inspiration and the month of May; Mrs. Benjamin Brewster, April and Justice; and Mrs. William Meagher, June and Knowledge. Here they examine a large mock fish . . . one of Mrs. Brewster's props.

All Birmingham residents, Mrs. Brewster is a board member of Cranbrook Music Guild and Mrs. Schaefer and Mrs. Meagher are Institute of Science employees. Major Domo for the event was Harry D. Hoey, headmaster of Cranbrook school. Mr. and Mrs. Henry Scripps Booth were hosts.



PEO Celebrates Founders Day With a Luncheon

The 91st annual PEO Founders Day and the 10th anniversary of the Oakland county cooperative will celebrate Founders Day on Wednesday with a luncheon and program beginning at 12:45 p.m.

Speaker of the day is Dr. Blanche Hinman Dow, president of Cottey college in Nevada, Mo., which is owned and maintained by the PEO Sisterhood.

PRINCIPAL purpose of the sisterhood is the promotion of higher education for women accomplished through its three main projects, Cottey college, educational loan fund and international peace scholarships.

Mrs. T. C. Morgan and Mrs. A. Dale Kirk, both of Birmingham, are in charge of luncheon and community house arrangements; and Mrs. H. C. Carlson is in charge of publicity.

Call your Society Editor if you have news of social interest.

Ruth Shain Class

Mrs. John A. Ormond of Birmingham will speak to the Ruth Shain class on economic conditions of the Belgium Congo next week at the Birmingham community house. Mrs. Ormond is a former member of the Ruth Shain class.

Have You Met . . .

The residents of 2667 Manchester? Mr. and Mrs. E. H. Wright moved from Ortonville on Nov. 27. He is employed by Ford Tractor & Implement division, Birmingham. They have four children. Hobbies are hunting, fishing and gunsmithing.

Your Children (ages 5 to 13) Are Invited to Join OUR CLUB!

On your next visit ask any dining room Hostess for a membership card for Greenfield's Children's Club. There's no charge—and it will lead to interesting events.



FORT LAUDERDALE RENTAL

Private Ocean Front Home available immediately. Includes clothes washer and dryer, dishwasher, central heating, dishes, linen, yard maintenance. Complete house cleaning weekly. \$3,000 for 3 months. Monthly rates available. Phone UL 2-3386.

NOTICE TO TAXPAYERS

4% PENALTY will be added January 20, 1960 on all unpaid County and School taxes due December 1, 1959 on properties in the City of Birmingham.

AVOID THIS PENALTY BY PAYING YOUR TAXES NOW. If you have not received a tax bill on property owned by you, notify the City Treasurer's Office.

Russell T. Berger
City Treasurer

January 8, 1960

Business Club Plans Social Meet

For their social meeting Jan. 21, at 7:30 p.m. at the Community house, the Birmingham business women's club will hear Mrs. Mayme Lillotte of Royal Oak, in her presentation of Adventure in American Literature.

Mrs. Lillotte was formerly dramatic coach and teacher of American literature at Taylor university in Indiana.

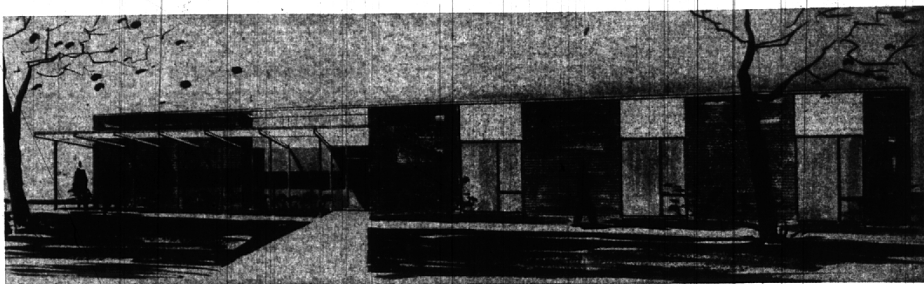
In addition to her experience as an educator, Mrs. Lillotte has appeared on the legitimate stage in such plays as The Virginian, The Rebel and others in the Dustan Farnum era. Audrey Kemp, at the piano, will provide the musical background for Mrs. Lillotte's sketches.

Serving on the committee are Betty House, chairman; Anne Birrell, Helen Gronseth, Kay Winters, Betty Barstow and Thelma Zimmerman.

Weavers' Meeting

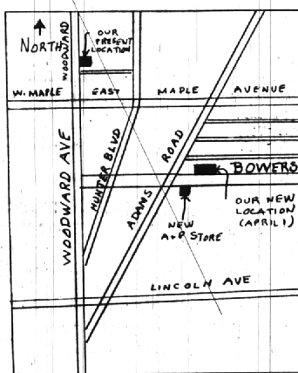
The Michigan Weavers guild meeting at the Women's city club on Jan. 21 at 1:30 p.m. will have Robert Saliers, guest speaker. He has conducted his own weaving business for the past 12 years near Biely, Mich. He was formerly a weaving instructor at Cranbrook academy of art.

To serve you better . . . A Modern New Plant



. . . ready by April 1st

We're pretty excited these days about the wonderful new plant that will house our printing operation on or about April 1st of this year! This is a move we've been planning for almost 5 years. Now the building is under way, the 81 tons of steel girders are in place and the masonry walls are now rising from the foundations. Yes, indeed, very shortly now we're going to have a modern, well equipped plant designed EXACTLY to our needs. Which means you'll get the benefits through faster service, more efficient production and maximum quality and craftsmanship. We're hardly able to wait, really!



Plenty of Parking on our new site of **91,000 sq. ft.**

We will continue our Day & Night Plant Operation

Our present location and building facilities represent six phases of growth and plant expansion since 1878. Today, and for some time, actually, we have been crowded and operating in facilities inadequate and lacking modern "touches" which we vitally needed in our expanding growth. Now we will enjoy the latest in plant layout and manufacturing facilities. Air conditioning for the 8,400 sq. ft. of office space and a plant set-up that can be converted later to air conditioning. Throughout the manufacturing area we will have 45 candle power lighting, as an example of plant modernness! And we have anticipated continued growth, too, by including generous areas for department expansion. We hope, when we make our move, that you'll be our guest and visit us, won't you?

DAY AND NIGHT OPERATION

. . . and a Detroit Sales Office to serve you

Statement of Condition, December 31, 1959

ASSETS	
Cash on Hand and in Banks	\$ 1,563,500.69
U.S. Government Securities	3,334,844.70
Federal Home Loan Bank Securities	303,622.80
Federal Home Loan Bank Stock	420,000.00
F. H. A. Improvement Loans	133,256.58
First Mortgage Loans and Other First Liens on Real Estate	20,761,268.39
Real Estate Owned	12,448.45
Real Estate in Judgment	12,978.01
Loans on Savings Accounts	243,769.99
Office Building and Equipment (less depreciation)	273,031.18
Deferred Charges and Other Assets	36,027.14
TOTAL ASSETS	\$27,094,747.93

LIABILITIES	
Insured Savings Accounts	\$25,577,756.60
Loans in Process	76,005.56
Other Liabilities	6,283.50
Specific Reserves	56,845.19
General Reserves	\$1,334,786.56
Surplus	42,980.52
Total Reserves and Surplus	1,377,707.08
TOTAL LIABILITIES	\$27,094,747.93

GROWTH DURING PAST TEN YEARS

December 1949	\$3,135,186.00
December 1951	\$5,239,055.00
December 1953	\$7,046,796.00
December 1955	\$13,179,531.00
December 1957	\$20,293,487.00
December 1959	\$27,094,747.00

OFFICERS

EMERSON C. BROWN
Chairman of the Board
WALTER L. MORELAND
President
HENRY F. JOHNSON
Vice-President
JOHN S. TOWNSEND
Asst. Vice-President
MARIE E. MILLER
Secretary-Treasurer
LEONARD D. KNOX
(Manager Berkeley Branch)
BETSY TAIT
Auditor

DIRECTORS

EMERSON C. BROWN
HENRY F. JOHNSON
HARVEY A. KRESGE
JOHN P. MACKAY
RALPH MANUEL
WALTER L. MORELAND
RALPH C. MOULTHROP
RICHARD J. WILSON

Where you Save does make a difference



Birmingham
FEDERAL SAVINGS
3 1/2%
CURRENT RATE

EACH ACCOUNT
INSURED TO \$10,000

99 West Maple
Corner of Pierce
3055 W. 12 Mile Rd.
Berkley

MI 4-1711

THE AVERILL PRESS, INC.

(Formerly the Printing Division of The Birmingham Eccentric)

PLANT—JORDAN 4-6644

MIDWEST 6-2000

DETROIT SALES OFFICE—TRINITY 5-2629