

A shortage of blood exists in Oakland county, according to South Oakland Red Cross blood program chairman Mrs. Fred Spier. The shortage is caused by increases in use of blood, combined with cancellation of five industrial blood banks during December, Mrs. Spier said. The cancellations cost the county Red Cross chapter more than 500 pints of blood.

In Oakland County... 5 GOP Incumbents Will Run in 1960

They'll be running again, say five Republican incumbents holding Oakland county offices. Their chances for re-election in November look good—since Oakland county hasn't had a Democrat in office since 1938.

Sheriff Frank Irons had stated he will run for the \$10,000 a year (plus room and board at the county jail) sheriff's job he has held since 1955.

Drain Commissioner Daniel W. Barry is ready to run for the \$12,450 county job he holds. Barry, 37, has held the job since former drain commissioner Ralph W. Main vacated it in 1956.

Back again for election will be Clerk-Register Daniel T. Murphy, Jr., who was first elected to the combined offices in 1958. Murphy, 36, was named register of deeds in 1956. The two offices were combined after the death of veteran clerk Lynn D. Allen in 1958. Murphy's pay is \$11,350.

"ONE MORE term" is what 67-year-old County Treasurer Charles A. Sparks is shooting for. He has been elected 13 times since 1928. Prosecutor George F. Taylor announced his 1960 candidacy when he was appointed ten weeks ago to fill the post formerly held by Circuit Judge Frederick C. Ziem. Taylor, of 6510 Franklin, Bloomfield township, earns \$13,500 annually.

To Seek State Aid With 12 Town

FERDALE—A deadline of Jan. 25 for participating cities to present "alternate solutions" to the bottlenecked Twelve Town drain project was set last week by the Ferndale city commission. It was the first step in a scheme to get state agencies to take over the big \$47 million plan. The plan was introduced by Ferndale Mayor Bruce D. Garbutt and is being reviewed by Jan. 25. Ferndale will ask the state health department and attorney general's office to intervene. A suit brought by Madison Heights currently stymies the drain's construction.

Another Teamster Fire Hits County; 4th in Two Years

The fourth fire in Oakland county involving Teamsters broke out last week in Independence township. State police investigators have been called into the case because of its possible connection with past Teamster fires. About \$5,000 damage was caused by last week's trash fire at the home of Leann Harrelson, Jr., son of the president of Pontiac Teamsters local 614. The arson case last August in which fire damaged the Bloomfield township home of Charles O'Brien, Teamster official, has not been solved.

\$6,000 Salary Set For Legal Director

PONTIAC—The Oakland county Bar association has approved a salary of \$6,000 for a lawyer to run the non-profit legal aid society which will open at 221 National building, Pontiac, soon. Birmingham Attorney Carl F. Ingraham is chairman of the legal aid society's board of directors. Grants of \$8000 each from Birmingham Junior League and the Ford Foundation will largely finance the bureau's first year. The bureau will handle legal work for persons who cannot afford attorneys' fees.

Getting Up There

PATUXENT RIVER, Md.—James E. Patrick, aviation electronics technician second class, USSN, son of Mr. and Mrs. Wilbur E. Patrick of 1833 Harper, Birmingham, was promoted to his present rate Dec. 15, while serving with Airborne Early Warning Squadron Two at the Naval Air Station, Patuxent River, Md.

FEDERAL Hardware and Supply Annual SALE Starts today

SAVE AS NEVER BEFORE
Come Early... Limited Quantity In Many Items!

BIG DISCOUNTS IN ALL DEPARTMENTS

CUSTOM BUILT

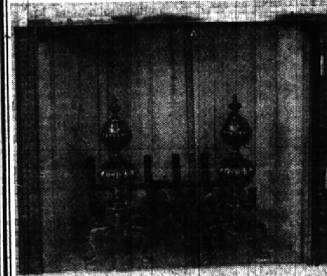


SAVE \$10.00

Custom built to your exact measurements for a perfect fit... immediate delivery... built of materials that will last a lifetime... styled to blend with any decor... smooth operating curtain... not to bleed with any decor...

regular low price was 29.95 now for a limited time only

1995



WITH THIS COUPON
20 Gallon
GARBAGE
CAN

Sturdy... passes all city codes reg. 3.49

1.98

FORMICA
Assorted Colors

79¢ sq. ft.

ICE
SKATES
Sharpened

25¢ pr.

All style blades... latest equipment.



LOG GRATE

20" size graceful design

1.99



LOG BASKET

A real beauty with shiny brass handle... large slats

4.88



FIREPLACE
TOOLS AND
STANDS

A grand selection in solid brass... many styles as low as...

14.88

SAVE ON LUMBER

2x4x8
69¢

4x8x1/4
Fir Plywood
3.88

4x8x1/4
PEG BOARD
3.88

Open Thursday & Friday Evenings

HANDI-HANGERS

Regular 79¢
2 for 59¢

Gain additional storage space in the attic... garage... basement or anywhere you require shelves... do it the easy way with these handi-hangers.

PABCO Linoleum
TILE 9x9

6¢ sq. ft.



FEDERAL HARDWARE and SUPPLY

OPEN SUNDAY Elgin 6-7300 10 TO 4

SOUTHFIELD RD.

NEW BISSELL
RUG
Shampoo
Master
reg. 6.95

3.29

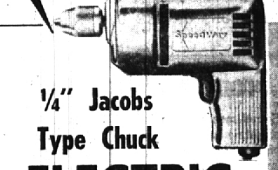


BISSELL
Upholstery
Cleaning Kit

Applicator and Cleaning Fluid \$1.69

ALL FOR \$3.99 Value

SpeedWay Limited Quantity



1/4" Jacobs
Type Chuck
ELECTRIC
DRILL

High speed powerful motor... fully guaranteed... nationally advertised make... positive pistol grip switch... a 14.95 value. Save more than 33%.

9.88

TOILET COMBINATION

Freestanding tank. Complete, ready to install. (Less seat). Reg. 29.95—

19.88

Genuine
Mother-of-Pearl
TOILET SEAT

complete with chrome hardware ready to install reg. 12.95

4.88

Mercury
SWITCHES
reg. 99¢...69¢
1/2" Thin Wall in 10 ft. lgths. 98¢
3/4" Thin Wall in 10 ft. lgths. 1.39

Cadmium Plated
SWITCH BOX
reg. 49¢...29¢

4" Octagon
Outlet BOXES
reg. 39¢...29¢

DUPLIX
Receptacle
reg. 25¢ 15¢ ea.

Complete line of thin wall fittings... fuse boxes... and breakers. Fluorescent and pre-wired fixtures

ROMEX
WIRE 14-2

3¢ ft. in roll rolls.

KASONIZE SHELF BRACKETS
4" 6" 8" 10" 12" 14" 16" from 40¢ ea.
PILASTER STRIP 12¢ ft.

THREE THINGS

CONCRETE Do not assume that the incidence of salt in this small writing is primarily for the ice on the concrete or the fall on the bird. Those are incidental uses.

SALT: The primary reason for bringing up this subject is to sell more salt—also to acquaint you with a few details that may be useful, especially in connection with your water softening problems.

Five grades of salt are used generally in softeners in this area—Granulated, Pelleted, Medium Flake, Detroit Rock and Louisiana (Kleer) Rock. They all make salt brine close to a saturated solution with which the softening mineral in your equipment is "riddled" of the hard minerals it has "riddled" out of the water supply. Since the various softeners have different flow rates in the regenerating process salts with different dissolving rates are required. Hence the complication—which didn't really have to happen.

Since we cannot redesign the machines we must provide the proper salt for them—SO

We have the different kinds of salt
We deliver them free of charge
We carry them to the basement and empty them into softeners, garbage cans, crocks, etc.

We arrange to deliver them to your home at regular intervals such as the first Tuesday in the month, the day that Lucy the laundress is on hand, etc.

Don't hesitate to call us for information, assistance and advice, for, SALT.

BIRDS: These fowl do far more good than harm and also provide a continuing amount of fun during the whole year (unless you happen to be a missile bug) if you provide them with feed and a summer bath.

Have you watched a downy woodpecker at work or a red-breasted nuthatch scooting up and down a tree upside down and downside up? They are cleaning out over-wintering grubs and eggs from the crevices and are probably doing a better job than you will do later on with bug sprays. They love sunflower seeds and are particularly attracted to suet seed cakes.

Other items you can obtain here are peanuts, hickory nuts, corn on the cob, shelled and cracked corn and so on.

CONCRETE: Every spring the air resonates with screams that "The rock salt ruined our concrete walk" or "Ice Rem or X-2 or Calcium Chloride did it."

Not so!

In 99 cases out of 100 the damage was done by alternate freezing and thawing because one or more of the following conditions was undoubtedly present:—

- Concrete was improperly proportioned
- Materials were below recommended standards
- Poor workmanship
- Failure to use "air-entrained" cement
- Overworking of the concrete when finishing the surface
- Failure to properly cure the concrete
- Poorly prepared sub-grade
- Poorly drained sub-grade

When the concrete is prepared properly using air-entrained cement it will have a high resistance to frost action and a high immunity to surface scaling.

Use rock salt above 15 or 20 degrees tracking

Use calcium chloride below 15 degrees tracking

Use Ice Rem or X-2 for quicker results and less tracking

Use an Ice Chipper (\$3.75) in lieu of "melters" There you are—all in a nutshell.

McCLELLAN-BALL CO.

YARD SUPPLIES KENNEL FARM
BIRMINGHAM, MICHIGAN

Phone MI 4-4133 850 S. Woodward



IT'S TIME FOR YOUR
MIDWINTER
CHECK-UP!

YOU MAY SAVE COSTLY REPAIR BILLS—

Have Your FORDOMATIC SERVICED NOW!

• Drain Transmission • Re-fill with New Fordomatic Fluid. REGULAR PRICE \$18.95

• Adjust Transmission • Road Test Car

• Bands and Linkage • Clean Out Pan and Screen

JANUARY SPECIAL ONLY \$12.95

HAROLD TURNER FORD
464 S. Woodward MI 4-7300

Open Monday to Friday 7 A.M. to Midnight, Saturday 7 A.M. to 1 P.M.