

People in young love, when older, they reflect upon the substance of this "divine caloric", realize they merely responded to a natural inheritance . . . the legacy from a beneficent Providence. Under a stimulus of this powerful emotion, a man and a woman may ascend to the "thrill of sense and ecstasy of soul" that are incredibly evident, yet paradoxically indefinable.

# The Birmingham Eccentric

BIRMINGHAM, MICHIGAN

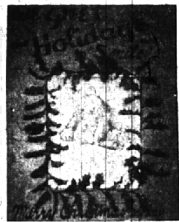
Thursday, January 14, 1960

SECTION  
B

## 'Don't Step on The Fire'



Two pieces of fire-fighting equipment answered the call from the Woodward-Hamilton branch of the Detroit Bank and Trust company last week. The sum of the fire—one smoldering mop in the janitor's closet and a hall full of smoke. The mop was out in short order. The mop-up took a little longer. The fire was caused by a still-lit cigarette dropped in a wastebasket. Damage, except to the mop, was negligible, according to the Birmingham fire department.



## Season to Be Jolly?

Standing in line at Birmingham postoffice windows this Yule season has been enlivened by plenty of yak-yaks, through the combined efforts of Postmaster Kálie Reese and Karen Reed, sophomore art student at Groves high school. At Reese's special request, Karen drew the above greeting, which has welcomed customers from the bulletin board in the postoffice lobby.

## At Your Door Next Week:

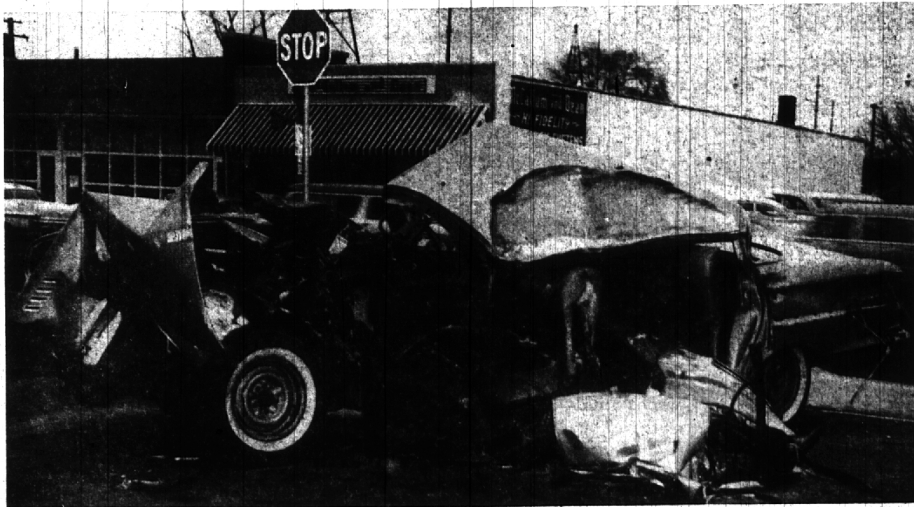
The 1st of 8 specially-written articles about the municipal and justice courts in the Birmingham-Bloomfield area.

The Birmingham Eccentric's staff writers have visited and interviewed your 11 local court officials. Their stories are presented in a series entitled:

### "YOUR COURT REPORT"

Beginning in Next Week's

**Birmingham Eccentric**



## Tragedy's Vivid Remains

This stark reminder of the danger that prowls local streets and highways stood at a gas-station at Maple and Hunter for a week after Christmas. It stood as a monument to the 17-year-old driver who was dead on arrival at Beaumont hospital early Christmas morning, Timothy N. Bearden, of

Tottenham road suffered fatal injuries in this car when it slammed into a curb and two trees at N. Woodward and Bloomfield court, Birmingham. He was a student at Seaholm high school.

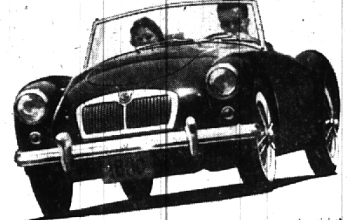


We have facilities to take care of ALL your insurance requirements with QUALITY PROTECTION

Preferred Ratings for Qualified Risks on all types of insurance

**BRICKER INC.**  
INSURANCE SERVICE  
1330 N. WOODWARD  
12 Blocks S. of 12 Mile  
Royal Oak  
LI 3-5020

THE NEW **MG '1600'** IS ON THE MOVE!



More Go!—More Stop! High spirited new horses champion at the bit . . . rugged new disc brakes to keep 'em in hand! Sports roadsters, sports coupes . . . wire of disc wheels . . . eye popping view colors . . . twelve months warranty. That's the new MG 1600! Arrange for a test-drive today.

**FALVEY** MOTOR SALES COMPANY  
LI 3-5000  
22600 Woodward - Ferndale

annual sale



seamless stockings

Save up to \$1.05 on every box.  
Monday, January 11 thru  
Saturday, January 16



THOSE WHO WANT GOODS MUST COME QUICK  
**COLOSSAL CLEARANCE**

**1/3 to 1/2 off**

Our own best goods and fancies in broken sizes and colors. We're clearing house to make room for exciting new Spring modes.

**COATS** . . . Boycoats, lodencoats, some chester-fields, some carcoats.

**DRESSES** . . . casual wools, some dressy, some Lanz, some costumes.

**SKIRTS** . . . Tweeds, flannels, some tartans, some short and long kilts.

**BLOUSES** . . . A great variety of prints, some oxford and dacron and cotton solids.

**SHORTS & SLACKS** . . . Once-a-year clearance of our own immaculately tailored bermudas and pants in tweeds, flannel and other stuffs.

**LOUNGEWEAR** . . . Nighties and robes.

**SKIWEAR** . . . A manufacturer's sale of parkas and gabardine pants. (in the Birmingham store only)

**CAPEZIOS** . . . A veritable treasure trove of leather, fabric flats and heels, some with matching blouses or skirts.

**ACCESSORIES** . . . Various and sundry bags, belts, gloves, hats, slippers and other ecceteras.

**The Village Store**

GROSSE PTE. BIRMINGHAM SICHAW ANN ARBOR  
100 Parkway 200 Parkway 100 E. Johnson 100 E. Johnson

MANUFACTURED BY THE VILLAGE STORE CO. 20 NORTH PETER STREET.