

Three Participate In 'Big Blast'

Three Birmingham area reservists members of the 70th division participated in Operation Big Blast at Fort Sheridan near Chicago, Ill., a continuing CPX in which the civilian soldiers sharpen their strategic skills by fighting a paper-

war, utilizing maps, with a mythical enemy. Participating were Lt. Col. Joseph S. Baick of Trowbridge, Lt. Col. Robert R. Owen of Fairfax and Maj. Herbert Mariatt of Washington boulevard.

ATTIC INSULATION



pays for itself!

CHECK THESE Special Values—BUY NOW!

THIS WEEK ONLY . . .

GENUINE ZONOLITE HOUSE FILL \$149 Bag

1 1/2" ECONOMY FIBERGLAS BLANKET 4c Sq. Ft. (140' Roll-\$5.60)

1 1/2" FOIL FACED FIBERGLAS BLANKET 5c Sq. Ft. (100' roll-\$5.00)

2" FOIL ENCLOSED FIBERGLAS BLANKET 8c Sq. Ft. (100' Roll-\$8.00)

ABOVE VALUES ONLY IF PICKED UP OR DELIVERED IN QUANTITIES OF 10 OR MORE

FOR YOUR REMODELING PROBLEMS:

We will help you to do it yourself, or will recommend a qualified contractor. Call Today!

Birmingham Lumber AND SUPPLY COMPANY INC.
1025 HAYNES STREET
PHONE MI 4-3636

Between Hunter & Adams—5 Blocks South of Maple
Hours 7:30 to 5:00 Mon. thru Fri.; 7:30 to 1:00 Sat.

SEE OR CALL US TODAY!

NO BUGS IN THIS ONE

IT'S PROVEN BY MORE THAN A BILLION OWNER-DRIVEN MILES

THE LARK BY STUDEBAKER

FEEL CONFIDENT. Why take a chance on a first year car? Join 150,000 Lark owners who already know the joy of happy, carefree, trouble-free driving.

STRETCH OUT IN COMFORT. The Lark is three to fifteen inches shorter overall than any car in its class yet bigger inside than any of the newcomers.

BANK ON PROVEN ECONOMY. Proven in over 1,000 business fleets. Records show The Lark saves up to 33% on fuel bills; up to 23% on maintenance.

INVEST IN PROVEN VALUE. The National Automobile Dealer's official used car guide proves that The Lark consistently holds its value better than the average low-priced U.S. six passenger car.

Compare them all and you'll love that LARK—QUALITY-BUILT BY THE QUALITY MAKER.



SEE AND PRICE SIX STUNNING STYLES AT YOUR STUDEBAKER DEALER'S

SUBURBAN MOTORS CO., INC., 565 S. Woodward Avenue

SAVE AND BE SURE WITH ABE—ALWAYS BUY CERTIFIED USED CARS—SOLD ONLY AT YOUR STUDEBAKER DEALER

51% of Dollar Goes To Eat and Run Cars

(Special to The Eccentric)

NEW YORK—Where does the money go? How does the Birmingham family spend its income and for what?

Latest facts and figures covering fiscal 1959, show that local residents are devoting 51 percent of their available cash after settling with the tax collector, for purchases of food and for private transportation. The latter includes purchases of automobiles, motorcycles and boats, together with maintenance, fuel and oil.

The findings are contained in the annual survey of the Standard Rate and Data service, covering all parts of the country. Detailed for each area is its spending pattern during the 12 months ending July 1, 1959.

IN BIRMINGHAM, the survey shows the amount spent for food and transportation came to \$93,346,000 in the year.

Of this, \$20,782,000 went to local stores selling food for home use. Restaurant sales are not included. Purchases of automotive equipment and accessories represented another \$27,230,000.

GAS FILLING stations took the remaining \$5,334,000. Combined, they represented 51 percent of the year's total retail volume, which came to \$105,174,000, a gain over the \$99,180,000 of the previous year.

Such strong consumer spending, so soon after emerging from a depression, is attributed to firm confidence on the part of the general public of good times ahead.

IN GENERAL, they reasoned, jobs have been steady and wages moving upward, despite some temporary setbacks. Conditions were about right, therefore, to get some of those big-ticket items that had been putting off buying, even though it meant an increase in their installment debt. Besides, prices would be higher later on, so the thing to do was to buy now.

As a result, the SRS figures show, retail stores in Birmingham had sales that amounted to \$12,718 per local household.

This topped the average in the United States as a whole of \$4,047 per household. In the east north central states it was \$4,168.

Of the \$105,174,000 in total retail business locally, the principal part, other than that garnered by food and automotive stores, went for general merchandise, \$5,371,000; apparel, \$3,742,000; home furnishings, \$5,018,000; and drugs, \$6,615,000.

DR. ANDREW WATSON

Taught Here; Teaches at UM

Dr. Andrew S. Watson, former Birmingham resident and Baldwin high school graduate is now on the faculty of the University of Michigan Law school.

Watson, whose parents, Mr. and Mrs. Andrew N. Watson, live at 1207 Bird, Birmingham, also has an academic appointment to the university's medical school.

A master of science in medicine, he is taking part in courses which the qualities of human behavior are important—criminal law, criminal procedure, evidence and domestic relations.

He is a former staff member of the department of Psychology and Associate professor of psychology and law at the University of Pennsylvania.

His work has resulted in the preparation of a manuscript for a book which is now under contract for publication.

Why Pay More

When You Can Have the Best

Winter Seal

Extruded Aluminum Combination WINDOWS

\$13.95 (for 12 sq. ft.)

SPECIAL ALUMINUM DOORS

Full 1" thick doors. Fully weatherstripped with stainless steel hardware.

\$25.50

WOODCRAFT CO.
1184 Grant MI 4-0424
Same Location for 24 Years (Since 1935)

Coming or Going, Motorist Must See and Be Seen

Chief Ralph W. Mosley of the Birmingham Police department said today that the increasing number of rear and traffic accidents makes the need for personal checking of tail lights, turn signals, stop and license plate lights a necessity.

He pointed out that in the 1958 Safety Check campaign, 60,000 defective rear end lighting.

It was the number one cause for rejection as it has been in the past 4 years.

Mosley contended that most drivers don't know if their rear lights are burning, they merely assume they are lighted.

"I would be wise, he said, for each motorist to have a member of his family stand behind the car and check the signal and tail lights when he gets home tonight.

The chief also pointed out that burned out headlamps were the number two cause for rejects in the 1958 Safety Check campaign.

More than 18 percent of all cars tested were rejected because of one or more burned out headlamps.

Search Is on Here For Head Counters

W. C. Hnitz, district supervisor of the 1960 Census of Population and Housing which starts April 1, today issued an appeal to residents of the area to become candidates for jobs as census takers.

Applications for jobs as census takers may be made by calling FE 3-7037 or FE 3-7038 Monday thru Friday.

Applicants for jobs as census takers must be over 18 years of age, be citizens of the United States, and have a high school education or its equivalent. Candidates will be required to pass a selection test demonstrating their ability to understand written instructions and read maps.

Persons who are presently or recently associated with law enforcement or tax assessing or collection agencies are not eligible.

Census takers will be paid on a piece price basis. A diligent census taker should earn about \$12 per day, Hnitz said.

G and S Back At Cranbrook

CRANBROOK—After a lapse of five years, Gilbert and Sullivan will again be presented by the music departments of Kingswood and Cranbrook schools. "The Mikado" will be given in the Cranbrook auditorium at 8:15 p.m. March 4 and 5.

Robert Bates, Cranbrook School music director, is in charge of the production, assisted by Mrs. Lois Chapman, Kingswood Glee club director, and Mrs. Nancy Porter, drama coach at Kingswood. Also assisting is John Hunting, Cranbrook faculty member.

Stage settings are being handled by the Cranbrook School stage crew under the direction of Peter Kerr, art instructor.

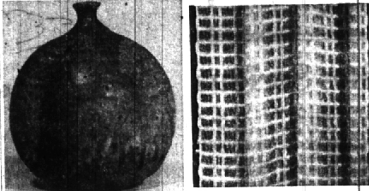
Student Henry Weil is in charge of publicity. The performances will benefit the American Field Service fund.

Tickets may be purchased from students of the two schools or by calling Cranbrook.

My Neighbors

"It says here, 'American Tax Payer—Dedicated to the Memory of!'"

FERRIS GARDNER COAL & OIL CO.
LI 3-2500 MI 4-6820



Made Here, Win in Detroit

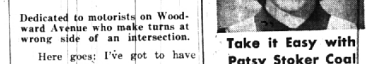
Prize-winners in the 14th Exhibition for Michigan Artist-Craftsmen were the entries pictured here. Cassandra Abbe's Stoneware bottle (left) was awarded the Kay Harrison Memorial prize of \$50. The artist-craftsman is at the Cranbrook Academy of Art. The white case-hat fabric of Jane Aistrop, 165 N. Woodward, Birmingham, won the American Institute of Decorators Purchase prize of \$100. The exhibition runs through Feb. 21.

People's Column Gets Poetic Over Drivers On Woodward

Dedicated to motorists on Woodward Avenue who make turns at wrong side of an intersection.

Here goes: I've got to have my say— I'm growing madder every day, I froth—I foam—I gnash—I mutter. You d . . . d . . . dopes! That's not a start! "Cross over on the right, not left— You want your kith and kin berft? You mean you don't know port from starboard? You want to pay the three, bucks fine Every time you cross the line, flying? You want St. Pete to teach you flying? He will, you know. Just keep on tring."

Josephine Collins, 832 Davis, Birmingham



Take it Easy with Patsy Stoker Coal

Folks who know me call my Patsy Stoker Coal "The Lazy Man's Fuel." Patsy Stoker is long-burning, needs far less attention! Patsy is over 97% pure coal . . . the perfect partner for you and your heating comfort! Better order Patsy Stoker Coal now!

FERRIS GARDNER COAL & OIL CO.
LI 3-2500 MI 4-6820

FINAL CLEARANCE

SAVE UP TO 1/2 ON ALL MEN'S WINTER CLOTHING

Mortimer's
MEN'S STYLE CENTER
123 W. Maple

PRICES SLASHED



CLOSE OUTS on all Nationally Advertised Brands

ARMSTRONG
Corlon Vinyl Terrazzo 8c ea.
Patterns in a selection of colors. 9x9, reg. 25c ea.

PABCO
Marbled and Wood Tones 9x9 5c ea.
reg. 15c

PURE CORK ARMSTRONG TILE 10c ea.
8 1/2" x 8 1/2" x 1/8" Reg. 25c

PLASTIC WALL TILE 14c All Colors sq. ft.

KEN ROYAL
Pure Vinyl First Quality TERRAZZO PATTERN The Best You Can Buy 9" x 9" 17c ea.
reg. 45c

VINYL TOPPING 59c
27" wide . . . new patterns for counter tops . . . drawers . . . table tops . . . shelves . . . NOW

SAVE on PLUMBING FIXTURES

17 x 19 CHINA LAV. Complete With Fixtures Reg. \$21.95 16.95

TOILET COMBINATION 19.95
Freestanding. Complete, ready to install. (Less seat). Reg. 29.95

Buy Now • Pay Later WE ACCEPT INTERNATIONAL CREDIT CARDS

FEDERAL SUPPLY
ICE SKATES SHARPENED 25c pr.

Open Sundays 10 to 4 Thurs., Friday till 9 P.M.

SOUTHFIELD at 12 Mile Rd.
THURSDAY & FRIDAY EVENINGS TILL 9 P.M.

EL 6-7300 KE 7-8150