

"Bargain"

"Something Offered at a Price Favorable to the Customer"

Paul offers true bargains, using this definition



TOPCOATS

Reduced from

\$65 to \$45

and from \$65 to \$52.50

CURLEE CLOTHES

SUITS

(Elegantes, Bengalis, Consuls)

Reduced from \$70 to \$57.88 and from \$65 to \$52.50

(A few sport coats, too, as low as \$29.00)

There's never been a better time (or a better place) to replenish your wardrobe with good-looking, beautifully-styled, perfectly-fitting clothing.

PAUL Custom Tailor

(Tailor to 391 of the best dressed men in Birmingham and Bloomfield)

213 E. Maple

MI 6-6474

*Webster's Unabridged Dictionary

FLOWER ARRANGING

and

USEFUL MATERIALS WHEREWITH TO DO IT

Perhaps we should not have mentioned this subject because we know very little about the actual art of making arrangements.

However, because so many people have asked us for things and materials involved in this art and pastime we have gradually accumulated a broad assortment to choose from to wit:—

- POSEY CLAY—For securing frogs in containers
- FROGS—Of many shapes, sizes and weights—of lead, brass, wire, etc.
- VASE BASES—Black wood, bamboo-square, round octagonal, mat type, with feet, without, large, small and scroll types.
- SHEARS—Long, short, sharp, etc.
- SAUCERS—Plastic, to protect furniture.
- DECCA FELTS—Eliminates scratching by container.
- BLOOMLIFE—Lengthens the life of the flowers.
- OASIS—Water-holding and flower supporting material.
- ADJUSTABLE FLOWER HOLDER—A most adaptable adjustable one—especially for wide spreading arrangements and long stemmed flowers.
- PEBBLES—Polished stones from Japan.
- POTTERY—Delft, Hyalin, Terra cotta, June Bailey, COMPOTES—Iron, wood.
- MISC. CONTAINERS—Va. Metalcraft cache-pots, peunter washed copper, flat Japanese bowls, rice bowls, etc.

To Change The Subject: IF—

the weather is nice you cannot make a mistake by putting the first application of fertilizer on the lawn right now—even if there is a little snow on the ground.

As usual, DESPITE THE CONFLICTING ADVICE being broadcast by almost all manufacturers of fertilizer, the lawns (with the possible exception of FESCUE lawns) will require at least 5 to six lbs. of actual nitrogen per year.

This amount is achieved by spreading a material (such as Agrico, Stadler XXX, etc.) containing 10 units of nitrogen at the rate of 20 lbs. to 1000 sq.ft.

IF

the weather is awful call us and we will send all you need of salt, X-2, shovels, amonium sulphate, calcium chloride, etc. to get your car out of the driveway and keep you upright.

McCLELLAN-BALL CO.

YARD GARDEN

SUPPLIES

KENNEL FARM

BIRMINGHAM, MICHIGAN

Phone MI 4-4133

850 S. Woodward



Committee Heads at Work

Oakland county women working diligently on invitations for the reception they are giving for Mrs. Richard Nixon at Kimball high school, Royal Oak, Feb. 15 are (from left) Mrs. Dan O'Madigan, Mrs. Allen Strom and Mrs. Howard Liverance, all of the Birmingham area. Mrs. Liverance is head of protocol.

SOCIETY First Couple to Wed At Unitarian Church

The first couple to wed at the new Birmingham Unitarian church were Marcia Anne Loomis and John Norman Calvin. The Rev. Lester Mondale performed the Saturday afternoon ceremony at four o'clock.

The bride is the daughter of Mr. and Mrs. Peter Burr Loomis III of Dorchester road, Birmingham. Her husband is the son of Mrs. Glenn Howard Calvin of Shaker Heights, Ohio, and the late Mr. Calvin.

THE BRIDE wore her sister's gown of clustered satin designed with a Sabrina neckline, long lapping sleeves and bell-shaped skirt. Her veil was fashioned of Brussels lace and she carried eucharist lilies. Honor attendant, Mrs. Patrick Carl Fischer of Brookline, Mass., wore a princess style dress of peacock blue silk organza with cap sleeves and Dior-type bows on skirt. A crown of matching organza secured her circular veil. Her bouquet consisted of yellow roses.

JIM JONATHAN Calvin, brother of the groom, stood as best man. Seating the guests were Peter Burr Loomis IV and Patrick Carl Fischer.

Immediately following the ceremony, guests were greeted at the home of the bride's parents. The couple will sail Feb. 18 for England, where they will live for the next three years. John has a position with the English Electric Co., as a nuclear physicist.

MRS. JOHN N. CALVIN

position with the English Electric Co., as a nuclear physicist.

Beth Manzy, Sally Walker and Lorry Brown.

Feted on Birthday

Seventeen children arrived at the home of Scotty Forrest Jan. 30 to help him celebrate his seventh birthday. He is the son of Mr. and Mrs. Wesley Forrest of Shinnon boulevard, Birmingham. His sister and brother, Lisa and Stuart, were also on hand to offer their best wishes.

A FEW OF OVER 300 OPEN STOCK PATTERNS AT PONTIAC POTTERY

METLOX FACTORY SALE



20% OFF OPEN STOCK

For A Limited Time



CALIFORNIA PROVINCIAL



NAVAJO



BLUE PROVINCIAL



WOODLAND GOLD

ALSO: RED ROOSTER, DEL REY, AND HOMESTEAD PROVINCIAL PATTERNS

PONTIAC POTTERY

"Michigan's largest dinnerware specialty store"

2099 S. Telegraph

FE 2-8642

Adjacent to north side of Miracle Mile Open Daily and Sunday 10 to 8

B'HAM ECCENTRIC Page

Thursday, February 11, 1960 7-D

Research Chemist Speaks to Group

This evening the Pembroke Manor branch of the WNEFG will meet at the home of Mrs. Paul Faubel, 2284 Pembroke. Guest speaker will be Paul Thompson, research chemist at Ethol Corp. He will talk on "Wild Flowers."

Newly elected officers are Mrs. David Pritchard, president; Mrs. Charles Mentzer, vice president; Mrs. Robert Wandel, recording secretary; Mrs. Robert Kay, corresponding secretary; Mrs. Ronald treasurer.

TYPEWRITERS

ADDING MACHINES

RENTALS — SALES — SERVICE

ROYAL OLYMPIA SMITH-CORDONA - REMINGTON

BIRMINGHAM PRINTING

369 E. Maple — Midwest 4-4751

EVERYTHING IN DRAPERIES at Bessenger's

MADE-TO-ORDER IN OUR OWN WORKROOM . . . or, if you wish . . . FABRICS BY-THE-YARD (including top quality Fiberglas).



DRAPERY RODS FOR ANY TYPE WINDOW

Ask for Kirsch's special cut-to-measure rods with silent action . . . so easy to pull.

STOP IN OR CALL FOR HOME SERVICE

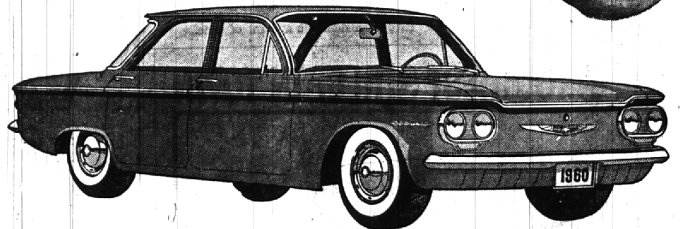
BESSENGER'S

established 1927

23535 Woodward (Near 9 1/2 Mile)

LI 1-4936

WHY NOT GO FIRST CLASS—FOR LESS!



THE REVOLUTIONARY Corvair

\$1797

"500" 4-DOOR SEDAN

BY CHEVROLET WITH THE ENGINE IN THE REAR WHERE IT BELONGS ***IN A COMPACT CAR!

Here is a truly compact, economical American car that retains the ride and 6-passenger comfort you're used to in a big one. The key to this small miracle: America's first and only rear-mounted aluminum engine—a revolutionary 6-cylinder power plant that combines compactly with the transmission and drive gears in one lightweight package. It works small wonders with mileage and—because this engine is air cooled—you'll never have to fuss with antifreeze.

OAKLAND COUNTY'S ONLY CHEVROLET DEALER WITH NITE SERVICE FOR YOUR CONVENIENCE

NORTH CHEVROLET

1000 S. WOODWARD, BIRMINGHAM MI 4-2735