



Inside the 'Y' Young 'uns Busiest 'uns This Week

Pep-teens meet again Saturday evening at the Y from 8 to 10 p.m. There will be dancing, refreshments, and use of the rec-room as usual. All members of the Y are admitted free of charge. Young people of Junior High School age are invited. Those who do not hold a membership will be charged 25¢ to cover costs.

Juniors

Tri-Hi-Y held its first social event by tobogganing Monday afternoon. The group earlier made popcorn and sold it at a Pep-teens meeting. More such activities are in the planning stage. Mrs. James Wilson has consented to be the adult group leader and a sponsoring committee is now being considered.

Tri-Hi-Y

Tri-Hi-Y, a senior high school girls group, met Monday evening at the YMCA to discuss further plans for a concession at the next Band Site of the teen center. They plan to sell pizza and pop. A report came from Sue McLean who visited the combined Hi-Y, Tri-Hi-Y city-wide planning meeting for a rally March 25. Hi-Y and Tri-Hi-Y members from the entirety of Detroit will be represented at the rally when Dr. Edwin Booth of the Boston University will give his well known talk on Abe Lincoln. A part of the evening's entertainment also will be a dinner and combo.

Roses and Stars

Mrs. William H. Klenke, Jr. and daughter Carol, 875 North Harsdale, Bloomfield Hills, receive the congratulations of (left to right) Lt. General Wm. S. Day (USMC-Ret.), Brigadier General Frederick E. Leek (USMC), and Brigadier Harry Van Lieu (USMC), rear, on the presentation of the rank of Brigadier General (USMC-R) on Mr. Klenke (extreme right). Ceremonies were at the Aviation Exhibit of Greenfield Exhibit, followed by a private luncheon at the Dearborn

Club. Brigadier General Klenke, a Chrysler Corporation sales executive, is now senior reserve officer of all Michigan Marine Air Reserve units. Carol Klenke is a student at Kingswood school, Cranbrook. General Klenke, who started flying in 1929 as a Marine private at the Navy's Pensacola (Fla.) flying school, is the first officer of such high rank to head up Michigan's Marine reserves.

We Need \$44 Million For Our Share of Debt

NEW YORK—What price national debt? How much is it costing residents of Birmingham in taxes each year to pay their portion of the interest charges alone on the debt?

From calculations made by the Tax Foundation, which keeps an eagle eye on taxes and spending at all levels of government, the current interest charges average \$51.48 per person for the entire population of the country.

It is nearly one dollar a week, every week in the year, for every inhabitant.

For Birmingham residents, applying the average interest costs locally, it adds up to \$1,200,000 a year. The rate will go up in the next fiscal year to a new high of \$63.71 per person. This was indicated recently by President Eisenhower when he told Congress that the

debt stands at \$291 billion, which is nearly \$1,650 for every man, woman and child in the country.

If the residents of Birmingham were to pay off their share of this obligation they would need the tidy sum of \$44,550,000.

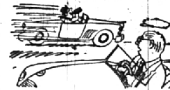
A glimmer of hope is seen in the President's announcement of a possible \$2.2 billion budget surplus in fiscal 1961. If it is achieved, he said, it should be applied to reducing the debt.

A quick calculation shows that a reduction of this size would cut Birmingham's portion of the debt by \$658,000. Local interest costs would drop proportionately.

Some idea of how huge an amount is the \$291 billion that represents the national debt comes from the Federal Home Loan Bank board. It points out that it is equal to the combined savings of the American people—in the form of savings accounts, life insurance and government bonds.

To buy or sell a used automobile, read and use Eccentric Classified Ads.

The Old Timer



"Any car will last a lifetime if you are a carefree driver."

OLGA
FERRIS GARDNER
COAL & OIL CO.
LI 3-2500 MI 4-6820

Completely Cleaned, Gov't Inspected, Top Quality



FRYING CHICKENS

WHOLE FRYERS **33¢** LB.
CUT-UP FRYERS . . . lb. 37¢

"SUPER-RIGHT" FULLY COOKED, SKINNED Semi-Boneless Hams

- Canned Hams POPULAR BRANDS 8-LB. CANS . . . EACH 4.99
- Corned Beef "SUPER-RIGHT" POINT CUT LB. 59¢
- Leg O' Lamb "SUPER-RIGHT" YOUNG TENDER . . . LB. 59¢
- Large Bologna "SUPER-RIGHT" CENTER SLICES . . . LB. 39¢
- Beltsville Turkeys 4 TO 10-LB. SIZES . . . LB. 43¢
- Medium Shrimp . . . LB. 59¢
- Halibut Steaks . . . LB. 35¢

ALLGOOD BRAND Sliced Bacon

3 1-LB. PKGS. 1.00

1-LB. PKG. 34¢

Sliced Bacon "SUPER-RIGHT" FANCY QUALITY . . . 1-LB. PKG. 39¢

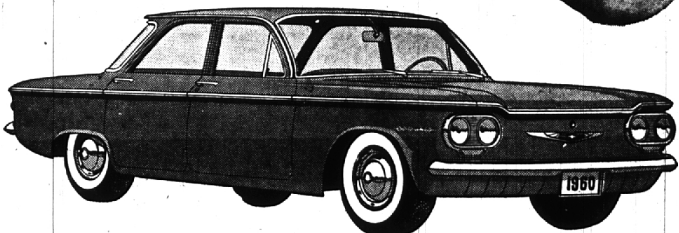
Thick-Sliced Bacon "SUPER-RIGHT" 2 LB. PKG. 77¢



TOP QUALITY, GOLDEN RIPE BANANAS

- RUBY-RED, FLORIDA SEEDLESS Grapefruit . . . 8 LB. BAG 49¢
- SWEET, JUICY, EASY TO PEEL Temple Oranges 66 SIZE . . . DOZ. 59¢

WHY NOT GO FIRST CLASS—FOR LESS!



THE REVOLUTIONARY Corvair \$1797

BY CHEVROLET WITH THE ENGINE IN THE REAR WHERE IT BELONGS
★ ★ ★ IN A COMPACT CAR!

• "500" 4-DOOR SEDAN

Here is a truly compact, economical American car that retains the ride and 6-passenger comfort you're used to in a big one. The key to this small miracle: America's first and only rear-mounted aluminum engine—a revolutionary 6-cylinder power plant that combines compactly with the transmission and drive gears in one lightweight package. It works small wonders with mileage and—because this engine is air cooled—you'll never have to fuss with antifreeze.

OAKLAND COUNTY'S ONLY CHEVROLET DEALER WITH NITE SERVICE FOR YOUR CONVENIENCE

NORTH CHEVROLET
1000 S. WOODWARD, BIRMINGHAM MI 4-2735

Special Week-End Sale!
A&P's MILD, MELLOW

Eight O'Clock Coffee

1-LB. BAG **49¢** 3-LB. BAG \$1.45

- Stokely's Ping or Pong YOUR CHOICE . . . 5 29-OZ. CANS 89¢
- Breast O' Chicken Tuna LIGHT MEAT . . . 4 6½-OZ. CANS 99¢
- Sultana Tomatoes . . . 4 27-OZ. CANS 89¢

- Ivory Soap . . . 4 MED. SIZE 41¢
- Oxydol GIANT PKG. 79¢ . . . 2 19-OZ. PKGS. 67¢
- Dreft . . . 2 15-OZ. PKGS. 67¢
- Spic and Span 34-OZ. PKG. 87¢ 3¢ OFF LABEL 16-OZ. PKG. 26¢
- Ivory Snow GIANT PKG. 77¢ . . . 2 12½-OZ. PKGS. 65¢
- Fluffo Shortening . . . 3 LB. CAN 69¢
- Lifebuoy Soap . . . 2 BATH CAKES 33¢
- Breeze GIANT PKG. 79¢ . . . 2 15-OZ. PKGS. 67¢
- Cashmere Bouquet REG. CAKES 4 FOR 41¢ 2 BATH CAKES 29¢
- Surf GIANT PKG. 83¢ . . . 2 REG. PKGS. 69¢
- Zest Soap . . . 2 BATH CAKES 43¢

JANE PARKER SPECIAL!

Apple Pie 8-INCH SIZE 39¢

JANE PARKER Donuts PLAIN, SUGARED OR CINNAMON . . . DOZ. 19¢

MARVEL Ice Cream ½-GAL. CTN. 49¢

MILD CHEDDAR, MUENSTER OR LONGHORN Cheese YOUR CHOICE . . . LB. 49¢

THIS WEEK'S STORE HOURS:
2 Big Birmingham Stores to Serve You
555 Adams: Open 9-9 Mon. - Fri. - Sat. 8-9
210 South Woodward: Open 8-6 Mon., Tues., Wed. & Sat. - 8-9 Thurs. & Fri.
Closed Sundays As Usual

All prices in this ad effective thru Saturday, Feb. 6th in Eastern Michigan A&P Super Markets

THE GREAT ATLANTIC & PACIFIC TEA COMPANY, INC.

A&P Super Markets
AMERICA'S DEPENDABLE FOOD PURCHASING LINE